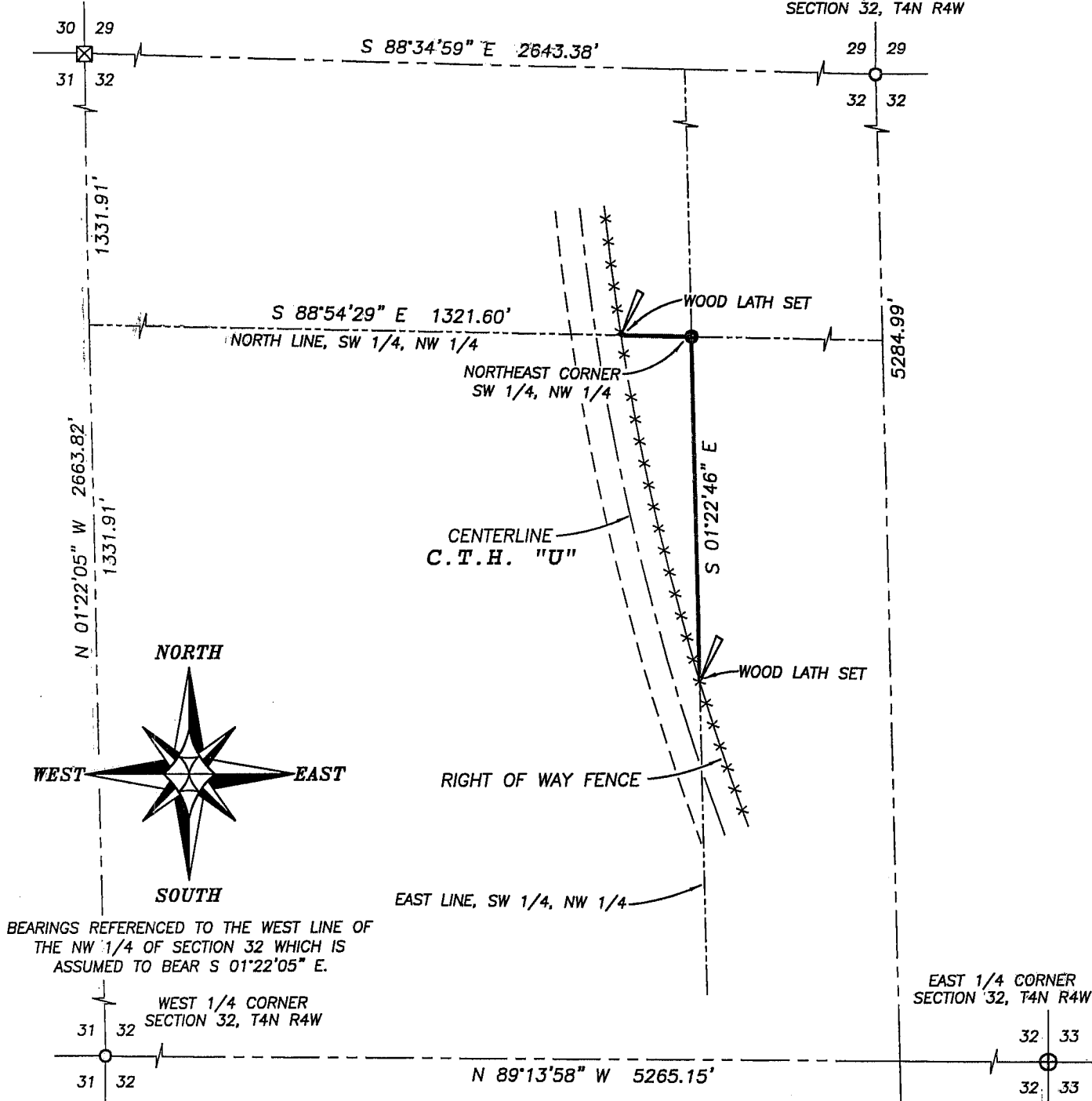


PLAT OF SURVEY

NORTHWEST CORNER
SECTION 32, T4N R4W

NORTH 1/4 CORNER
SECTION 32, T4N R4W



BEARINGS REFERENCED TO THE WEST LINE OF THE NW 1/4 OF SECTION 32 WHICH IS ASSUMED TO BEAR S 01°22'05" E.

SURVEYOR'S CERTIFICATE:

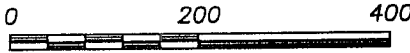
I, Larry L. Austin, Registered Wisconsin Land Surveyor, hereby certify:
 That the corners shown on this Plat of Survey were surveyed, mapped and monumented as shown hereon by me or under my direct supervision.
 That this survey was prepared under the instructions of David Clauer.
 That to the best of my knowledge and belief, this plat is an accurate representation thereof.
 That all plans that do not show a seal imprint in red ink may contain unauthorized alterations.
 The certification contained on this document shall not apply to any copies.
 Dated this 31st day of July, 2006.

Larry L. Austin
 Larry L. Austin, S-1903

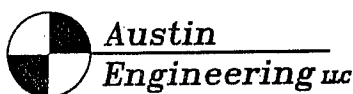


LEGEND

- No. 6 x 24" rebar set with cap
- ⊕ No. 8 rebar found with Grant County Aluminum Cap
- No. 6 rebar found
- ⊠ Stone monument found
- x - x - Approximate location of fence



SCALE 1" = 200'



Prepared For: DAVID CLAUER

4211 HWY 81 E, LANCASTER, WI 53813
 PHONE 608-723-6363 FAX 608-723-6702

JOB NO: 06s050-CLAUER
 FIELDBOOK: TDS RANGER
 G:\T4NR4W\33
 H:\PLAT\T4NR4W\32\06s050-CLAUER

DRAWN BY: AJ AUSTIN
 APPROVED: LL AUSTIN
 CREW: BS-SA-BD