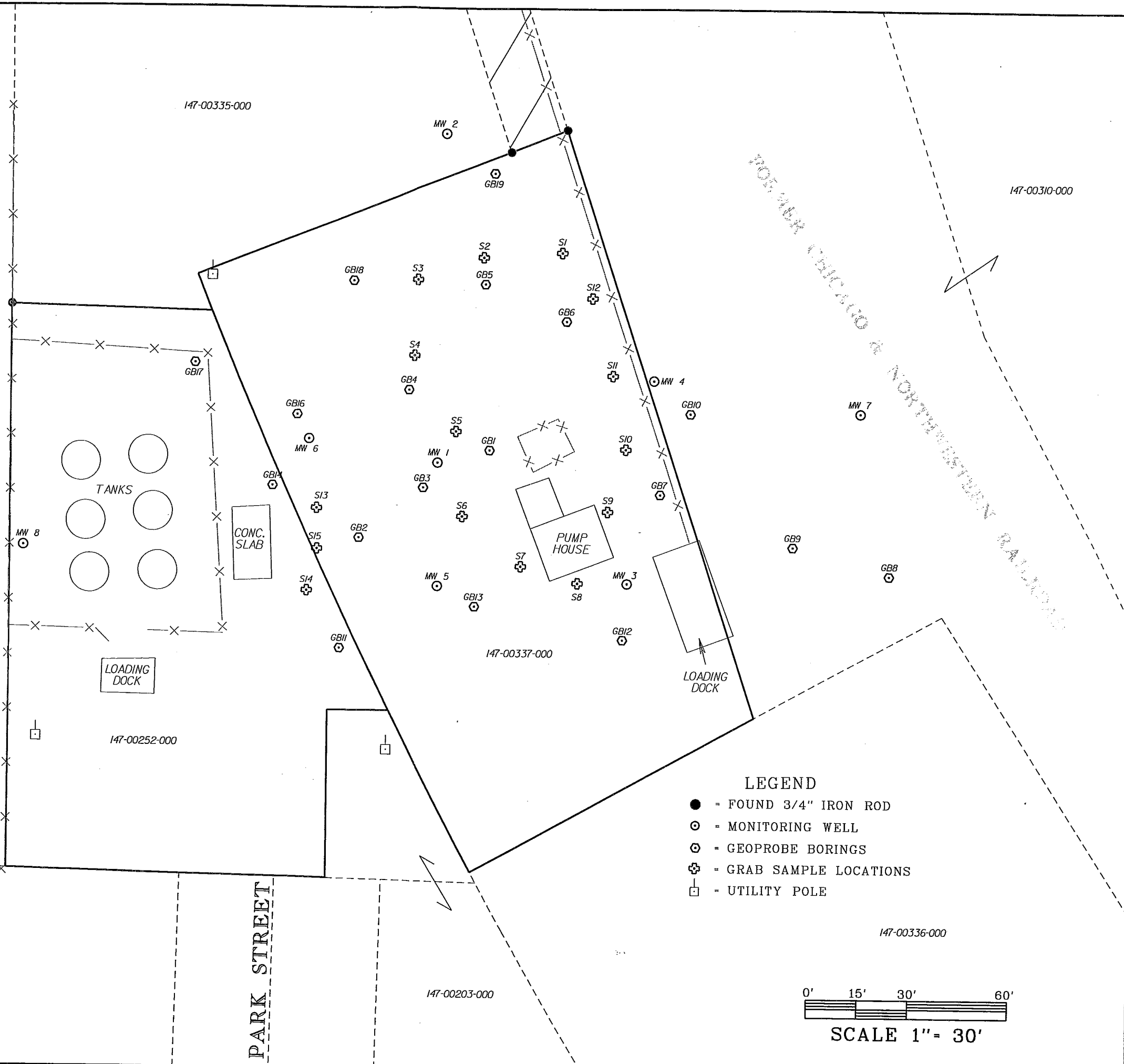
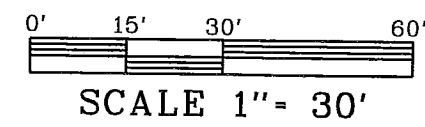


1/9/2006 9:34:05 AM I:\11000 to 2000\2000\2012\2012topo2.dgn

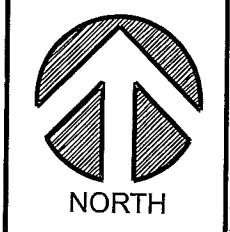
LANDOWNER INFORMATION:
 147-00203-000 - Clifford C. & Brian W. Caley
 147-00252-000 - Livingston Cooperative Oil Company
 147-00310-000 - TEVA, LLC (Anje Fehrsen)
 147-00311-000 - Keith A. & Lloyd F. Yellnek
 147-00335-000 - Thomas L. Wilcox
 147-00336-000 - Laufenberg Feed & Agric. Service, Inc.
 147-00337-000 - Livingston Cooperative Oil Company



- LEGEND**
- = FOUND 3/4" IRON ROD
 - = MONITORING WELL
 - ⊙ = GEOPROBE BORINGS
 - ⊕ = GRAB SAMPLE LOCATIONS
 - = UTILITY POLE



MUDRA
 LIVINGSTON
 ADDRESS



RAMAKER & ASSOCIATES, INC.
 Sauk City, Wisconsin

LIVINGSTON COOP
 LIVINGSTON, WI

2-2

SHEET:
 DRAWN BY: TN
 DATE: 01/09/06
 FILE: 2012topo2.dgn
 CHECKED BY: RLT
 JOB NUMBER: 2012

This document contains confidential or proprietary information of Ramaker & Associates, Inc. Neither this document nor the information herein is to be reproduced, distributed, used or disclosed either in whole or in part except as authorized by Ramaker and Associates, Inc.