

PLAT OF SURVEY

LEGEND

- ⊕ No. 8 rebar found with Grant County Aluminum Cap
- No. 6 rebar found
- No. 6 x 24" rebar set with cap
- + No monument set
- *** Approximate location of fence

BEARINGS REFERENCED TO THE SOUTH LINE OF THE NE 1/4 OF SECTION 26, WHICH IS ASSUMED TO BEAR S 89°59'15" W.

0 300 600

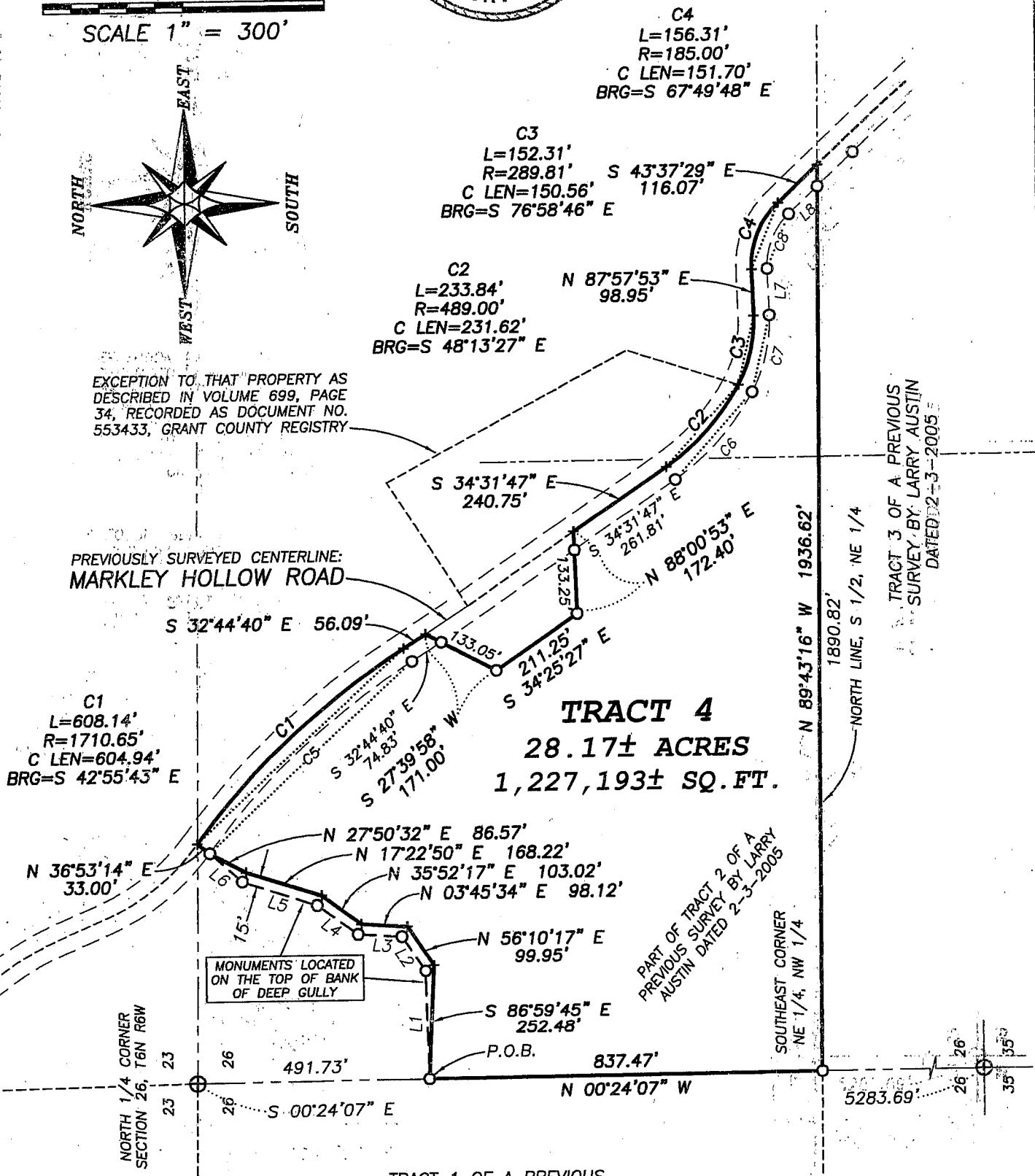
SCALE 1" = 300'



ALL PLANS THAT DO NOT SHOW A SEAL IMPRINT IN RED INK MAY CONTAIN UNAUTHORIZED ALTERATIONS. THE CERTIFICATION CONTAINED ON THIS DOCUMENT SHALL NOT APPLY TO ANY COPIES. DATED: DECEMBER 12, 2005.



Larry L. Austin



CURVE TABLE AND LINE TABLE LOCATED ON SHEET 2



Austin Engineering Inc.

4211 HWY 81 E, LANCASTER, WI 53813
PHONE 608-723-6363 FAX 608-723-6702

Prepared For: DAN FRANKLIN

JOB NO: 05s241
FIELDBOOK: TDS RANGER
G: T6NR6W\18
H: \PLAT\T6NR6W\26\05s241-FRANKLIN

DRAWN BY: AJ AUSTIN
APPROVED: LL AUSTIN
CREW: BS - SB - BD
SHEET 1 OF 2

PLAT OF SURVEY

TRACT 4 DESCRIPTION:

Located in the Northwest Quarter (NW 1/4) of the Northeast Quarter (NE 1/4) and the Northeast Quarter (NE 1/4) of the Northeast Quarter (NE 1/4) of Section Twenty-six (26), Town Six (6) North, Range Six (6) West of the 4th P.M., Wyalusing Township, Grant County, Wisconsin, containing 28.17 acres, more or less, and being described as follows:

Commencing at the North Quarter (N 1/4) corner of said Section Twenty-six (26);
 thence South 00° 24' 07" East 491.73' along the West line of said Northeast Quarter (NE 1/4) to the point of beginning;
 thence South 86° 59' 45" East 252.48' along a line of Tract 2 of a previous survey by Larry Austin dated February 3, 2005;
 thence North 56° 10' 17" East 99.95' along a line of said Tract 2;
 thence North 03° 45' 34" East 98.12' along a line of said Tract 2;
 thence North 35° 52' 17" East 103.02' along a line of said Tract 2;
 thence North 17° 22' 50" East 168.22' along a line of said Tract 2;
 thence North 27° 50' 32" East 86.57' along a line of said Tract 2;
 thence North 36° 53' 14" East 33.00' along a line of said Tract 2;
 thence 608.14' on the arc of a curve to the right having a radius of 1710.65' and a long chord bearing South 42° 55' 43" East 604.94' along a line of said Tract 2;
 thence South 32° 44' 40" East 56.09' along a line of said Tract 2;
 thence South 27° 39' 58" West 171.00' along a line of said Tract 2;
 thence South 34° 25' 27" East 211.25' along a line of said Tract 2;
 thence North 88° 00' 53" East 172.40' along a line of said Tract 2;
 thence South 34° 31' 47" East 240.75' along a line of said Tract 2;
 thence 233.84' on the arc of a curve to the left having a radius of 489.00' and a long chord bearing South 48° 13' 27" East 231.62' along a line of said Tract 2;
 thence 152.31' on the arc of a curve to the left having a radius of 289.81' and a long chord bearing South 76° 58' 46" East 150.56' along a line of said Tract 2;
 thence North 87° 53' 53" East 98.95' along a line of said Tract 2;
 thence 156.31' on the arc of a curve to the right having a radius of 185.00' and a long chord bearing South 67° 49' 48" East 151.70' along a line of said Tract 2;
 thence South 43° 37' 29" East 116.07' along a line of said Tract 2;
 thence North 89° 43' 16" West 1936.62' along a line of Tract 3 of a previous survey by Larry Austin dated August 29, 2005;
 thence North 00° 24' 07" West 837.47' along the West line of said Northeast Quarter (NE 1/4) to the point of beginning.

SURVEYOR'S CERTIFICATE:

I, Larry L. Austin, Registered Wisconsin Land Surveyor, hereby certify:

That the above description was surveyed, mapped and monumented as shown on this plat by me or under my direct supervision.

That conformance with local ordinances are not guaranteed with this survey.

That this survey was prepared under the instructions of Dan Franklin.

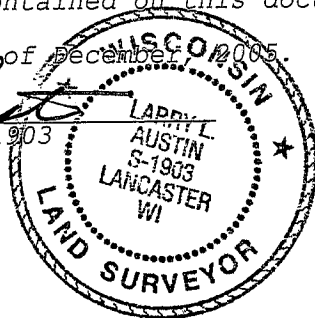
That to the best of my knowledge and belief, this plat is an accurate representation thereof.

That all plans that do not show a seal imprint in red ink may contain unauthorized alterations.

The certification contained on this document shall not apply to any copies.

Dated this 12th day of December, 2005.

Larry L. Austin
 Larry L. Austin, S-1903



LINE	BEARING	DISTANCE
L1	N 89°35'53" E	247.53'
L2	N 56°10'17" E	88.07'
L3	N 03°45'34" E	95.06'
L4	N 35°52'17" E	104.90'
L5	N 17°22'50" E	165.78'
L6	N 37°13'20" E	90.51'
L7	N 87°57'53" E	98.95'
L8	S 43°37'29" E	84.31'

CURVE	RADIUS	ARC LENGTH	CHORD BEARING	CHORD LENGTH
C5	1677.65'	596.40'	S 42°55'43" E	593.27'
C6	522.00'	249.62'	S 48°13'27" E	247.25'
C7	322.81'	169.65'	S 76°58'46" E	167.71'
C8	152.00'	128.43'	S 67°49'48" E	124.64'

AREA TABLE	
NW-NE	= 26.09± ACRES
NE-NE	= 2.08± ACRES



Austin
Engineering LLC

Prepared For: **DAN FRANKLIN**

4211 HWY 81 E, LANCASTER, WI 53813
 PHONE 608-723-6363 FAX 608-723-6702

JOB NO: 05s241
 FIELDBOOK: TDS RANGER
 G:\T6NR6W\18
 H:\PLAT\T6NR6W\26\05s241-FRANKLIN

DRAWN BY: AJ AUSTIN
 APPROVED: LL AUSTIN
 CREW: BS - SB - BD

SHEET 2 OF 2