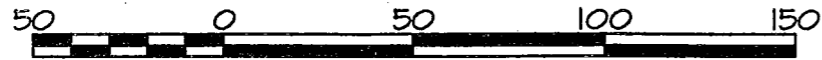


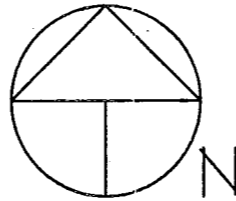
Book 17 PAGE 91

# PLAT OF SURVEY

FOR: CITY OF BOSCOBEL



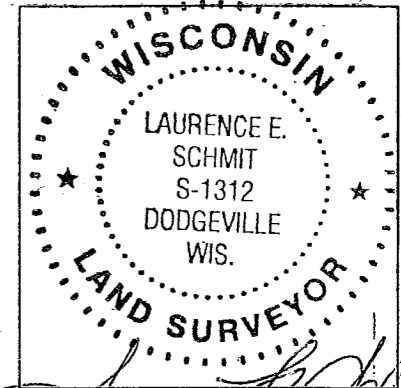
Scale 1" = 50'



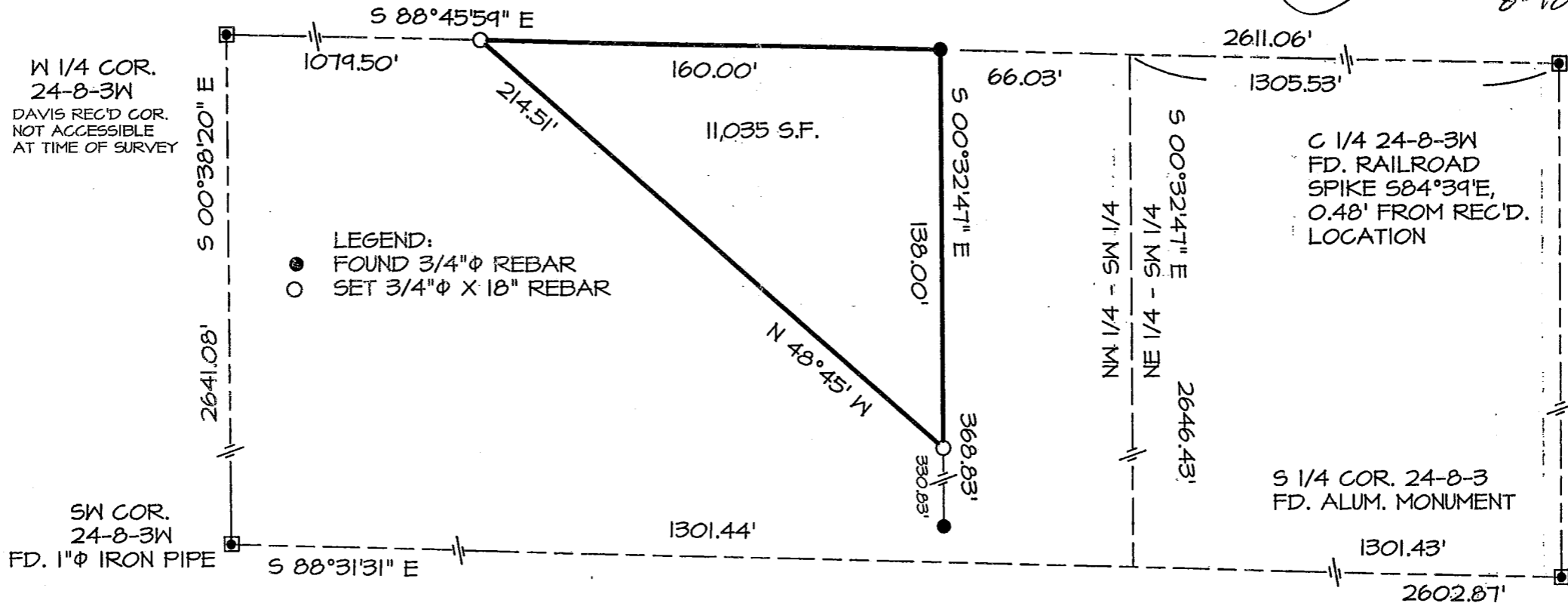
PLAT BEARINGS ARE REFERENCED TO THE SOUTH LINE OF THE SW 1/4 OF SECTION 24, T8N, R3W, WHICH LINE WAS PREVIOUSLY RECORDED TO BEAR S 88°31'31" E

SHEET 1 OF 2

OFFICE DATA	
JOB I.D.	20055-157
SURVEY CREW	AR JR
FIELD BOOK NO.	2005-3 P.5
DWG. STORED NO.	VERS 13
DRAWN BY	LES
DRAWING NO.	055-157.DWG
DATA FILE NO.	<055-157>



*Laurence E. Schmit*  
8-18-05



- LEGEND:
- FOUND 3/4" Ø REBAR
  - SET 3/4" Ø X 18" REBAR

## SCHMIT ENGINEERING & SURVEYING

215 E GRACE ST. DODGEVILLE, WI. 53533 (608)935-2121

