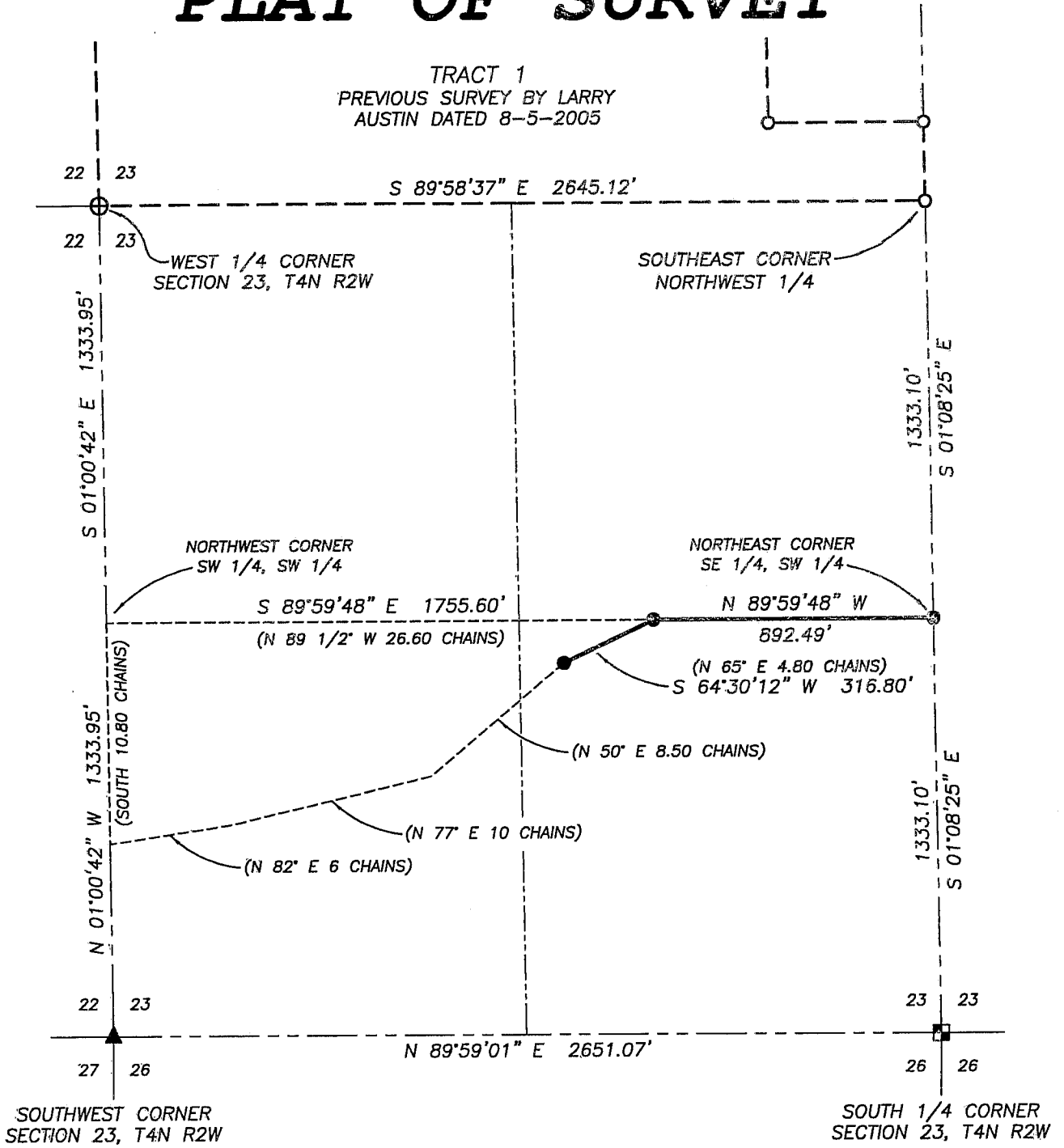


# PLAT OF SURVEY

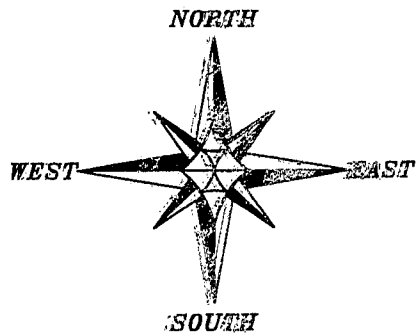
TRACT 1  
PREVIOUS SURVEY BY LARRY  
AUSTIN DATED 8-5-2005



**SURVEYOR'S CERTIFICATE:**

I, Larry L. Austin, Registered Wisconsin Land Surveyor, hereby certify: That the monuments as shown hereon were surveyed, mapped and monumented by me or under my direct supervision all in accordance with the instructions of Melvin Gehrke and to the best of my knowledge and belief, this plat is an accurate representation thereof. That all plans that do not show a seal imprint in red ink may contain unauthorized alterations. The certification contained on this document shall not apply to any copies. Dated this 6th day of August, 2005.

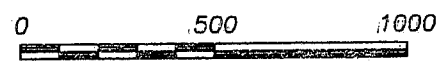
*Larry L. Austin*  
Larry L. Austin, S-1903



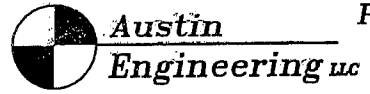
**LEGEND**

- Aluminum Monument found with Grant County Aluminum Cap
- ⊕ No. 8 rebar found with Grant County Aluminum Cap
- No. 6 rebar found
- ▲ 2" diameter iron pipe found
- No. 6 x 24" rebar set with cap
- ( ) Recorded as
- \*- Approximate location of fence

BEARINGS REFERENCED TO THE WEST LINE OF THE NW 1/4 OF SECTION 23 WHICH IS ASSUMED TO BEAR S 01°08'25" E.



SCALE 1" = 500'



4211 HWY B1 E, LANCASTER, WI 53813  
PHONE 608-723-8883 FAX 608-723-6702

Prepared For: MELVIN GEHRKE

JOB NO: 05s073  
FIELDBOOK: TDS RANGER  
G:\T4NR2W\24  
H:\PLAT\T4NR2W\23\05s073-GEHRKE

DRAWN BY: AJ AUSTIN  
APPROVED: LLL AUSTIN  
CREW: BS - SA