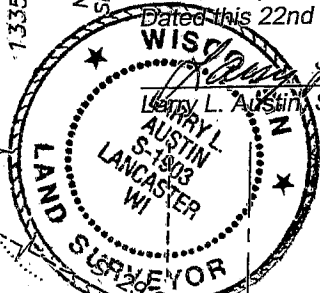


PLAT OF RESURVEY

SURVEYOR'S CERTIFICATE:

I, Larry L. Austin, Registered Wisconsin Land Surveyor, hereby certify: That under my direct supervision, this plat was surveyed, mapped and monumented as shown on hereon, all in accordance to the instructions of Ken Klaas of TDS Telecom and to the best of my knowledge and belief, this plat is an accurate representation thereof.

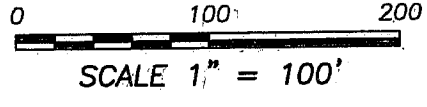
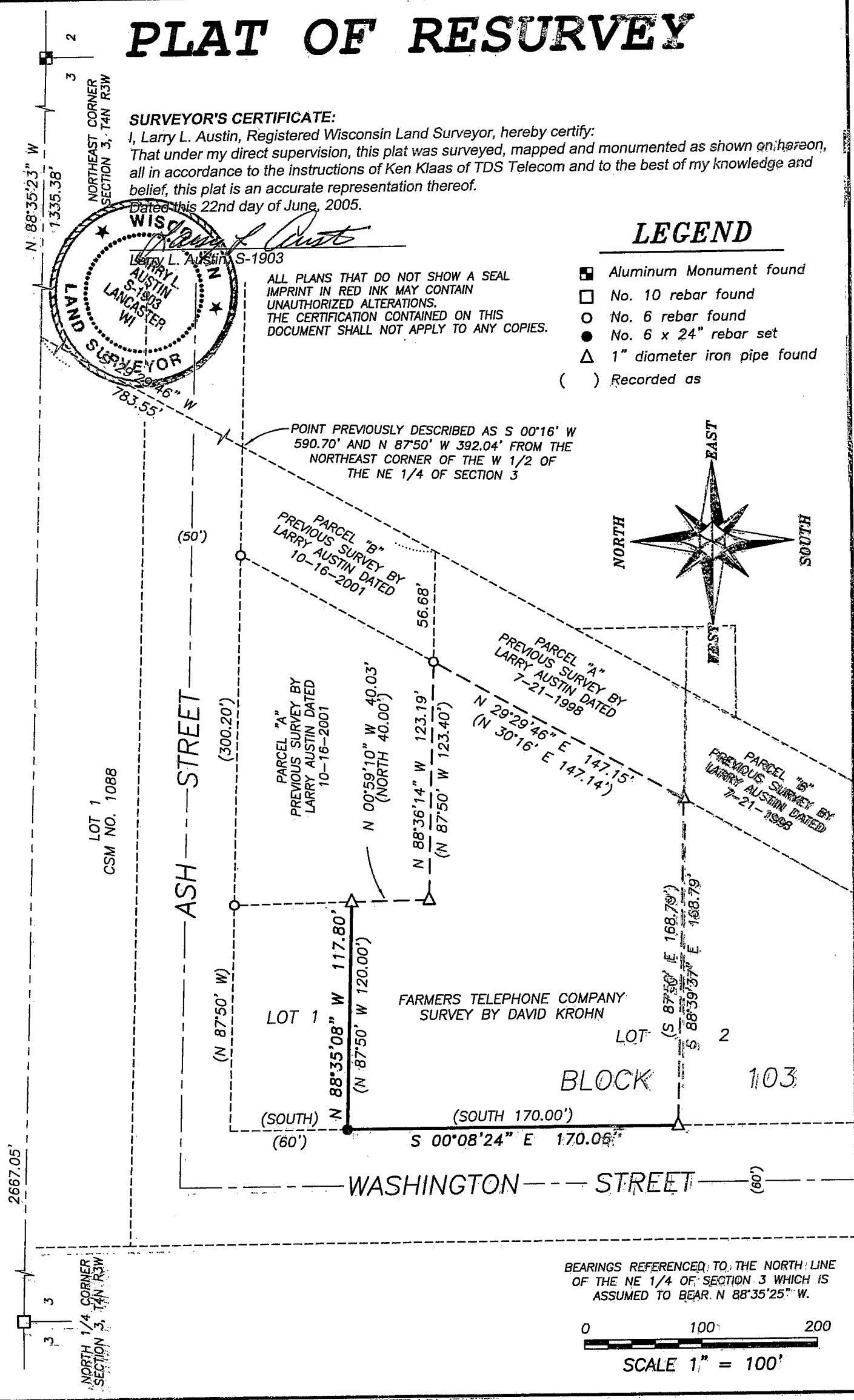
Dated this 22nd day of June, 2005.



ALL PLANS THAT DO NOT SHOW A SEAL IMPRINT IN RED INK MAY CONTAIN UNAUTHORIZED ALTERATIONS. THE CERTIFICATION CONTAINED ON THIS DOCUMENT SHALL NOT APPLY TO ANY COPIES.

LEGEND

- Aluminum Monument found
- No. 10 rebar found
- No. 6 rebar found
- No. 6 x 24" rebar set
- △ 1" diameter iron pipe found
- () Recorded as



Austin Engineering LLC

Prepared For: **TDS TELECOM**

4211 HWY B1 E, LANCASTER, WI 53813
PHONE 608-723-6383 FAX 608-723-6792

JOB NO: 05s089
FIELDBOOK: TDS-RANGER
G:\LANCASTER\PLANK
H:\PLAT\T4NR3W\03\05s089-TDS

DRAWN BY: AJ AUSTIN
APPROVED: LL AUSTIN
CREW: BS - SA