

MAP OF THE DESCRIPTION OF THE CORPORATE LIMITS OF THE CITY OF FENNIMORE, GRANT COUNTY, WISCONSIN, AS OF APRIL 11, 2005.

1021.84 ACRES ±
(44,511,286 SQ. FT.)

I, BRUCE D. BOWDEN, REGISTERED WISCONSIN LAND SURVEYOR - 1250, AGENT OF BOWDEN SURVEYING, LTD., DO HEREBY CERTIFY THAT I HAVE SURVEYED, DESCRIBED, MAPPED AND MONUMENTED THE PROPERTY SHOWN HEREON IN ACCORDANCE WITH THE INSTRUCTIONS OF MARGARET SPRAGUE, CITY CLERK, GREG LEE, CITY ENGINEER, AND EILEEN BROWNLEE, CITY ATTORNEY, AND THAT THIS MAP IS A CORRECT REPRESENTATION THEREOF TO THE BEST OF MY KNOWLEDGE AND BELIEF.

Bruce D. Bowden
BRUCE D. BOWDEN, R.L.S. - 1250
AGENT OF BOWDEN SURVEYING, LTD. DATE: April 11, 2005



IF THIS STAMP IS NOT RED COLORED AND THE SURVEYOR'S SIGNATURE IS NOT IN BLUE INK, THE MAP SHOULD BE ASSUMED TO BE A COPY AND MAY CONTAIN UNAUTHORIZED ALTERATIONS. THE CERTIFICATE SHOWN HEREON SHALL NOT APPLY TO ANY COPIES.



SCALE: 1" = 400'

NOTE: BEARINGS ARE REFERRED TO THE MERIDIAN OF THE NAD 83 DATUM UNLESS OTHERWISE NOTED. COORDINATE SYSTEM AS DEFINED BY THE WISCONSIN DEPARTMENT OF TRANSPORTATION AND DETERMINED BY GPS OBSERVATION.

RANGE 3 WEST
RANGE 2 WEST

U.S.H. " 18 "

18

17

16

TOWN 6 NORTH,
GRANT COUNTY,
RANGE 2 WEST,
WISCONSIN

19

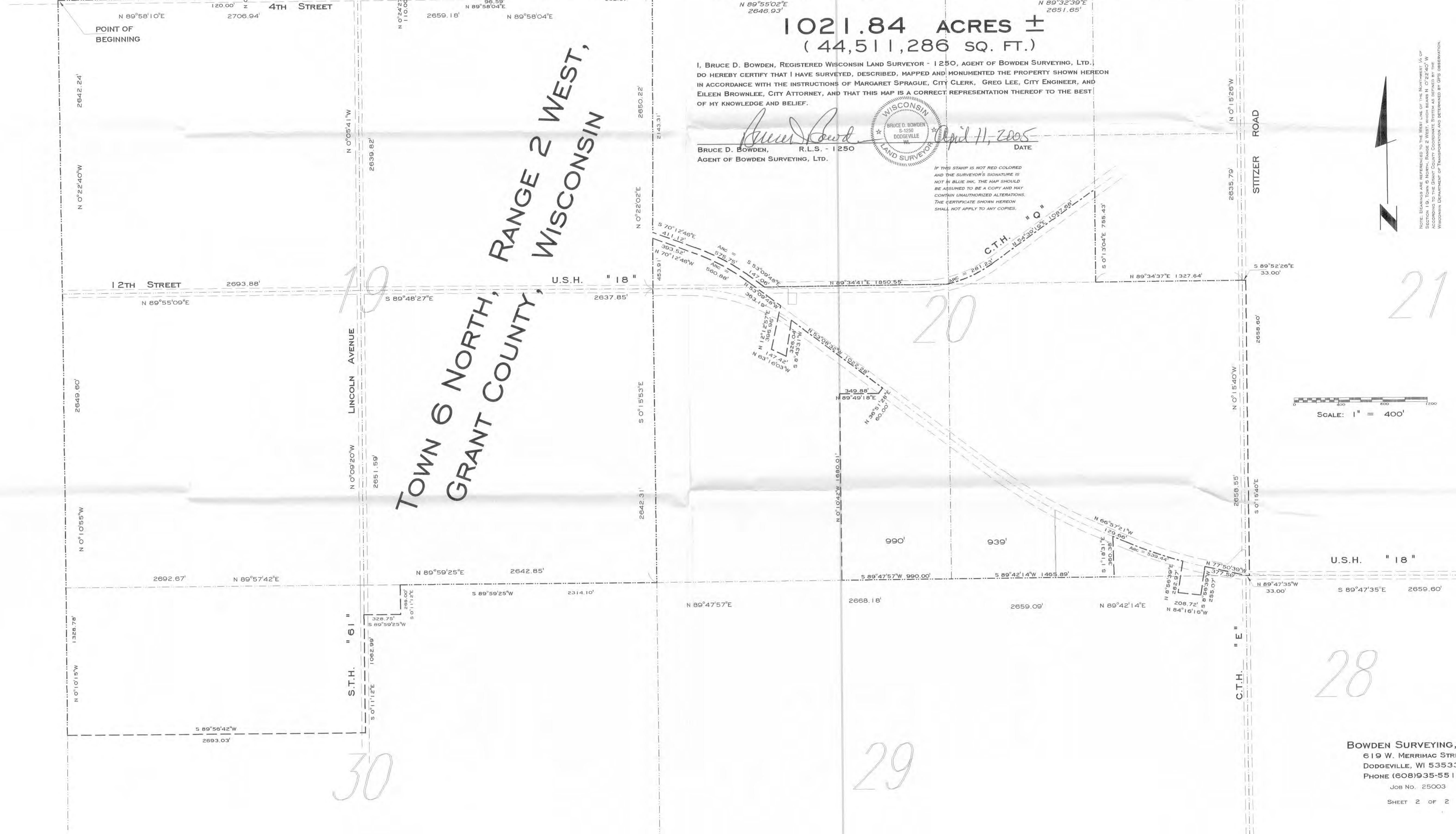
20

21

28

29

30



Those parts of Sections 18, 19, 20, 21, 29 and 30, Town 6 North, Range 2 West, City of Fennimore, Grant County, Wisconsin, more fully described as:

Beginning at the aluminum monument at the Northwest corner of Section 19; thence N 89° 58' 10" E, a distance of 1383.19' to the Southwest corner of the Southeast ¼ of the Southwest ¼ of Section 18; thence continuing N 89° 58' 10" E, a distance of 120.00'; thence N 0° 24' 47" W, a distance of 150.00'; thence S 89° 58' 10" W, a distance of 120.00'; thence N 0° 24' 47" W, a distance of 1179.64' to the Northwest corner of last said forty; thence S 89° 59' 24" E, a distance of 1323.88' to the Northeast corner of last said forty; thence S 0° 24' 27" E, a distance of 955.70'; thence N 89° 58' 04" E, a distance of 453.00'; thence S 0° 24' 27" E, a distance of 110.00'; thence S 89° 58' 04" W, a distance of 120.00'; thence S 0° 24' 27" E, a distance of 110.00'; thence S 89° 58' 04" W, a distance of 333.00'; thence S 0° 24' 27" E, a distance of 120.00'; thence N 89° 58' 04" E, a distance of 333.00'; thence N 0° 24' 27" W, a distance of 110.00'; thence N 89° 58' 04" E, a distance of 120.00'; thence S 0° 24' 27" E, a distance of 110.00'; thence N 89° 58' 04" E, a distance of 780.00'; thence S 0° 24' 27" E, a distance of 33.00'; thence N 89° 58' 04" E, a distance of 96.59'; thence N 0° 26' 23" W, a distance of 663.88'; thence N 89° 59' 18" E, a distance of 457.23'; thence S 0° 00' 31" W, a distance of 337.54'; thence S 65° 09' 45" E, a distance of 389.26'; thence S 33° 45' 27" W, a distance of 195.47'; thence N 89° 58' 04" E, a distance of 632.87' to the Northeast corner of said Section 19; thence S 0° 21' 50" W on the East line thereof, a distance of 2143.31'; thence S 70° 12' 46" E, a distance of 411.12' to the point of curvature of a 1934.84' tangent curve, concave to the Southwest; thence Southeasterly along said curve, a distance of 575.75', making a central angle of 17° 02' 58" and a long chord of 573.63' that bears S 61° 41' 19" E; thence S 53° 09' 48" E, a distance of 147.06'; thence N 89° 34' 41" E, a distance of 1850.55' to the point of curvature of a non-tangent curve, concave to the Northwest, having a radius of 1205.93', a central angle of 13° 21' 42", and a chord of 280.60' bearing N 61° 20' 10" E; thence Northeasterly along said curve, a distance of 281.23'; thence N 54° 39' 19" E, a distance of 1087.68'; thence S 0° 13' 04" E, a distance of 755.43'; thence N 89° 34' 37" E, a distance of 1327.64' to the East ¼ corner of Section 20; thence S 89° 52' 26" E, a distance of 33.00'; thence S 0° 15' 40" E, a distance of 2658.60'; thence N 89° 47' 35" W, a distance of 33.00' to the Southeast corner of Section 21; thence N 77° 50' 39" W, a distance of 377.59'; thence S 8° 56' 39" W, a distance of 255.07'; thence N 84° 16' 16" W, a distance of 208.72'; thence N 8° 56' 39" E, a distance of 282.97' to the point of curvature of a non-tangent curve, concave to the North, having a radius of 3820.00', a central angle of 8° 05' 28", and a chord of 538.99' bearing N 71° 00' 05" W; thence Westerly along said curve, a distance of 539.44'; thence N 66° 57' 21" W, a distance of 129.66'; thence S 1° 18' 31" E, a distance of 360.38'; thence S 89° 42' 14" W, a distance of 1465.89' to the South ¼ corner of Section 20; thence S 89° 47' 57" W, a distance of 990.00'; thence N 0° 10' 42" W, a distance of 1680.01'; thence N 89° 49' 18" E, a distance of 349.88'; thence N 36° 51' 28" E, a distance of 60.00'; thence N 53° 08' 32" W, a distance of 1022.28'; thence S 8° 43' 31" W, a distance of 326.04'; thence N 63° 16' 03" W, a distance of 147.42'; thence N 12° 12' 57" E, a distance of 396.96'; thence N 53° 09' 48" W, a distance of 363.19' to the point of curvature of a 1884.85' tangent curve, concave to the Southwest; thence Northwesterly along said curve, a distance of 560.88', making a central angle of 17° 02' 58" and a long chord of 558.81' that bears N 61° 41' 19" W; thence N 70° 12' 46" W, a distance of 393.52'; thence S 0° 22' 49" W, a distance of 453.91' to the East ¼ corner of Section 19; thence S 0° 15' 53" E, a distance of 2642.31' to the Southeast corner of Section 19; thence S 89° 59' 25" W, a distance of 2314.10'; thence S 0° 11' 12" E, a distance of 265.00'; thence S 89° 59' 25" W, a distance of 328.75'; thence S 0° 11' 12" E, a distance of 1062.99'; thence S 89° 56' 42" W, a distance of 2693.03'; thence N 0° 10' 15" W, a distance of 1328.78' to the Southwest corner of Section 19; thence N 0° 10' 55" W, a distance of 2649.60' to the West ¼ corner of Section 19; thence N 0° 22' 40" W, a distance of 2642.24' to the POINT OF BEGINNING; said described tract containing 1,021.84 acres (44,511,286 square feet), more or less.

Sheet 2 of 2

