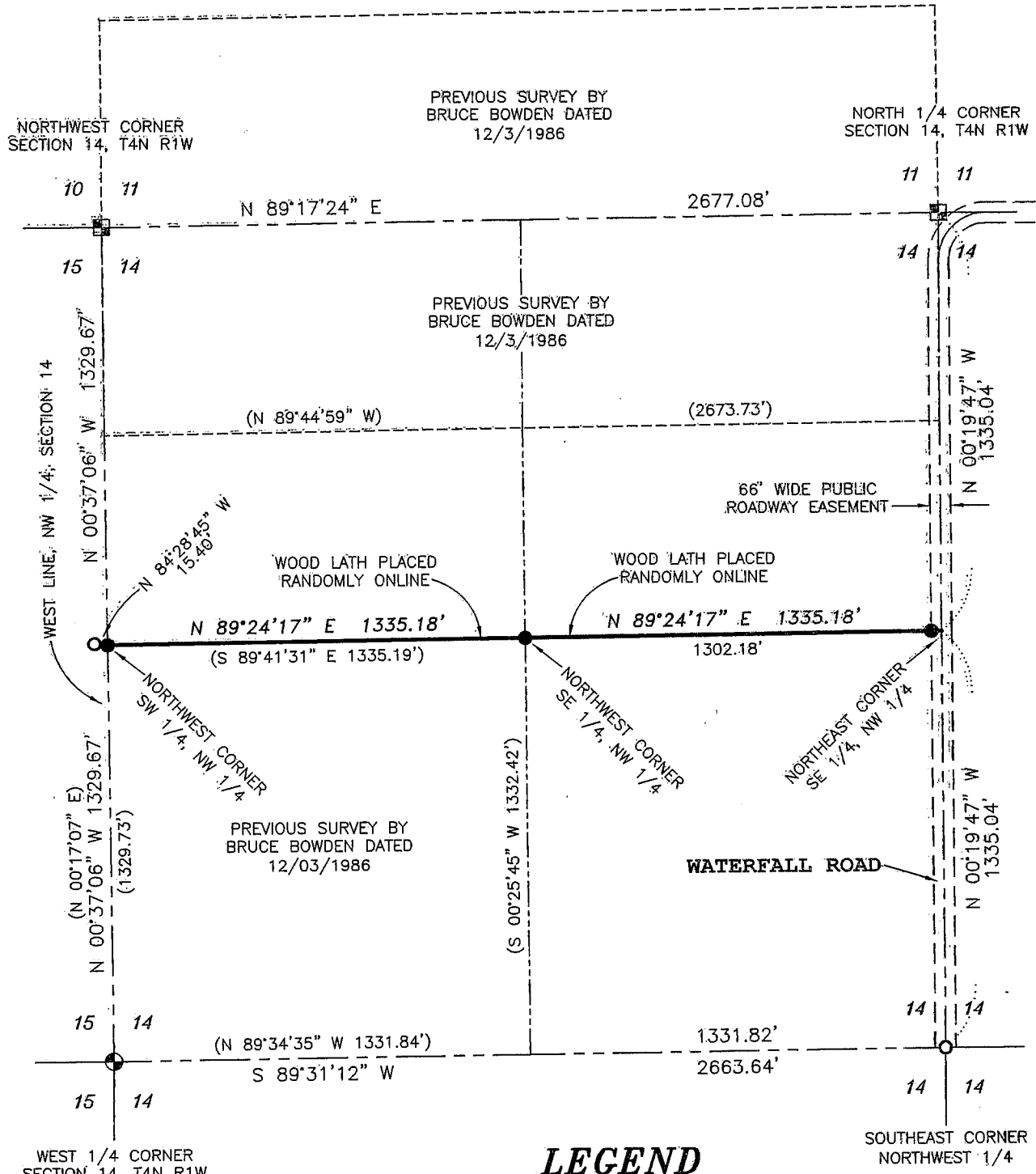
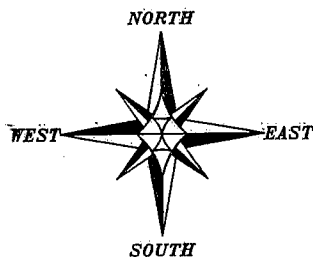


PLAT OF SURVEY



LEGEND

- Aluminum Monument found with Grant County Aluminum Cap
- ⊙ No. 8 x 30" rebar set with Grant County Aluminum Cap
- No. 6 x 24" rebar set with cap
- No. 6 rebar found
- () Recorded as

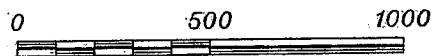


SURVEYOR'S CERTIFICATE:

I, Larry L. Austin, Registered Wisconsin Land Surveyor, hereby certify: That the North line of the South Half (S 1/2) of the Northwest Quarter (NW 1/4) of Section 14 was surveyed and monumented as shown hereon all in accordance with the instructions of Jacob Beiler, and to the best of my knowledge and belief, this plat is an accurate representation thereof. That all plans that do not show a seal impression in red ink may contain unauthorized alterations. The certification contained on this document shall not apply to any copies.

Dated this 3rd day of September, 2003.

Larry L. Austin
Larry L. Austin, LS-1903



SCALE 1" = 500'

BEARINGS REFERENCED TO THE WEST LINE OF THE NW 1/4 OF SECTION 14 WHICH IS ASSUMED TO BEAR AS SHOWN.

Prepared For: JACOB BEILER

AUSTIN ENGINEERING, LLC
4211 HWY 81 E, LANCASTER, WI 53813
PHONE 608-723-6363 FAX 608-723-6702

JOB. NO.: 03S145
FIELDBOOK: 2314
G:\T5NR1W\36B
H:\PLAT\T4NR1W\14\03S145-BEILER

DRAWN BY: AJ AUSTIN
APPROVED: LL AUSTIN
CREW: BS - SA

SHEET 1 OF 1