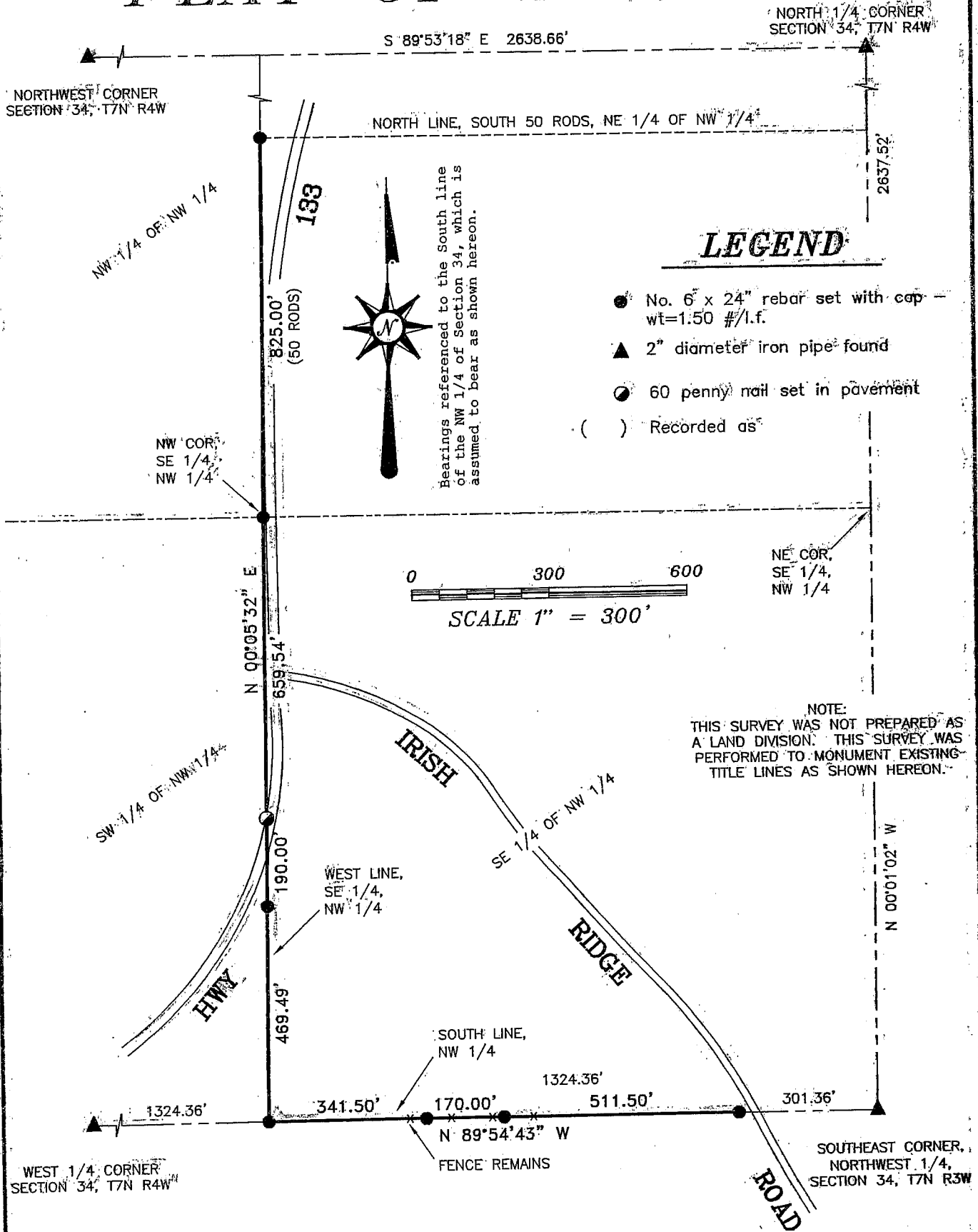


PLAT OF SURVEY

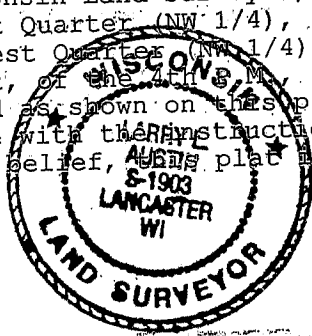


SURVEYOR'S CERTIFICATE:

I, Larry L. Austin, Registered Wisconsin Land Surveyor, hereby certify: That the South line of the Northwest Quarter (NW 1/4), and the West line of the East half (E 1/2) of the Northwest Quarter (NW 1/4) of Section 34, Town Seven (7) North, Range Four (4) West, of the 7th M., Grant County Wisconsin, were surveyed, mapped and monumented as shown on this plat by me or under my direct supervision all in accordance with the instructions of Everett G. McLean and to the best of my knowledge and belief, this plat is an accurate representation thereof.

Dated this 26th day of June, 2003.

Larry L. Austin
Larry L. Austin, S-1903



Prepared For: Everett G. McLean

AUSTIN ENGINEERING, LLC
4211 HWY 81 E, LANCASTER, WI 53813
PHONE 608-723-6363 FAX 608-723-6702

JOB NO: 03S133
FIELDBOOK: 20-09
G: T7NR4W\133
H: PLAT\T7NR4W\34\03S133

DRAWN BY: SW AUSTIN
APPROVED: LL AUSTIN
CREW: BS - SA

SHEET 1 OF 1

JUL 01 2003

PLAT OF SURVEY

NORTH 1/4 CORNER SECTION 34, T7N R4W

S 89°53'18" E 2638.66'

NORTHWEST CORNER SECTION 34, T7N R4W

NORTH LINE, SOUTH 50 RODS, NE 1/4 OF NW 1/4

NW 1/4 OF NW 1/4

133

825.00'
(50 RODS)

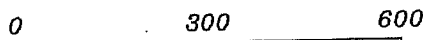


Bearings referenced to the South line of the NW 1/4 of Section 34, which is assumed to bear as shown hereon.

LEGEND

- No. 6 x 24" rebar set with cap - wt=1.50 #/l.f.
- ▲ 2" diameter iron pipe found
- 60 penny nail set in pavement
- () Recorded as

NW COR, SE 1/4, NW 1/4



SCALE 1" = 300'

NE COR, SE 1/4, NW 1/4

NOTE:
THIS SURVEY WAS NOT PREPARED AS A LAND DIVISION. THIS SURVEY WAS PERFORMED TO MONUMENT EXISTING TITLE LINES AS SHOWN HEREON.

SW 1/4 OF NW 1/4

IRISH

SE 1/4 OF NW 1/4

RIDGE

HWY

WEST LINE, SE 1/4, NW 1/4

SOUTH LINE, NW 1/4

N 00°01'02" W

1324.36'

341.50'

170.00'

1324.36'

511.50'

301.36'

N 89°54'43" W

FENCE REMAINS

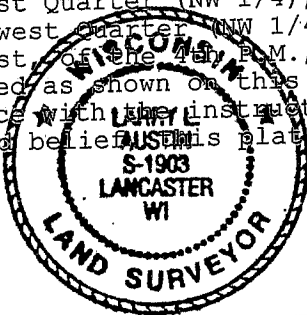
SOUTHEAST CORNER, NORTHWEST 1/4, SECTION 34, T7N R3W

WEST 1/4 CORNER SECTION 34, T7N R4W

SURVEYOR'S CERTIFICATE:

I, Larry L. Austin, Registered Wisconsin Land Surveyor, hereby certify: That the South line of the Northwest Quarter (NW 1/4), and the West line of the East half (E 1/2) of the Northwest Quarter (NW 1/4) of Section 34, Town Seven (7) North, Range Four (4) West, of the 4th P.M., Grant County Wisconsin, were surveyed, mapped and monumented as shown on this plat by me or under my direct supervision all in accordance with the instructions of Everett G. McLean and to the best of my knowledge and belief this plat is an accurate representation thereof. Dated this 26th day of June, 2003.

Larry L. Austin
Larry L. Austin, S-1903



Prepared For: Everett G. McLean

AUSTIN ENGINEERING, LLC
4211 HWY 81 E, LANCASTER, WI 53813
PHONE 608-723-6363 FAX 608-723-6702

JOB NO: 03S133
FIELDBOOK: 20-09
G:\T7NR4W\133
H:\PLAT\T7NR4W\34\03S133

DRAWN BY: SW AUSTIN
APPROVED: LL AUSTIN
CREW: BS - SA

SHEET 1 OF 1

JUL 01 2003