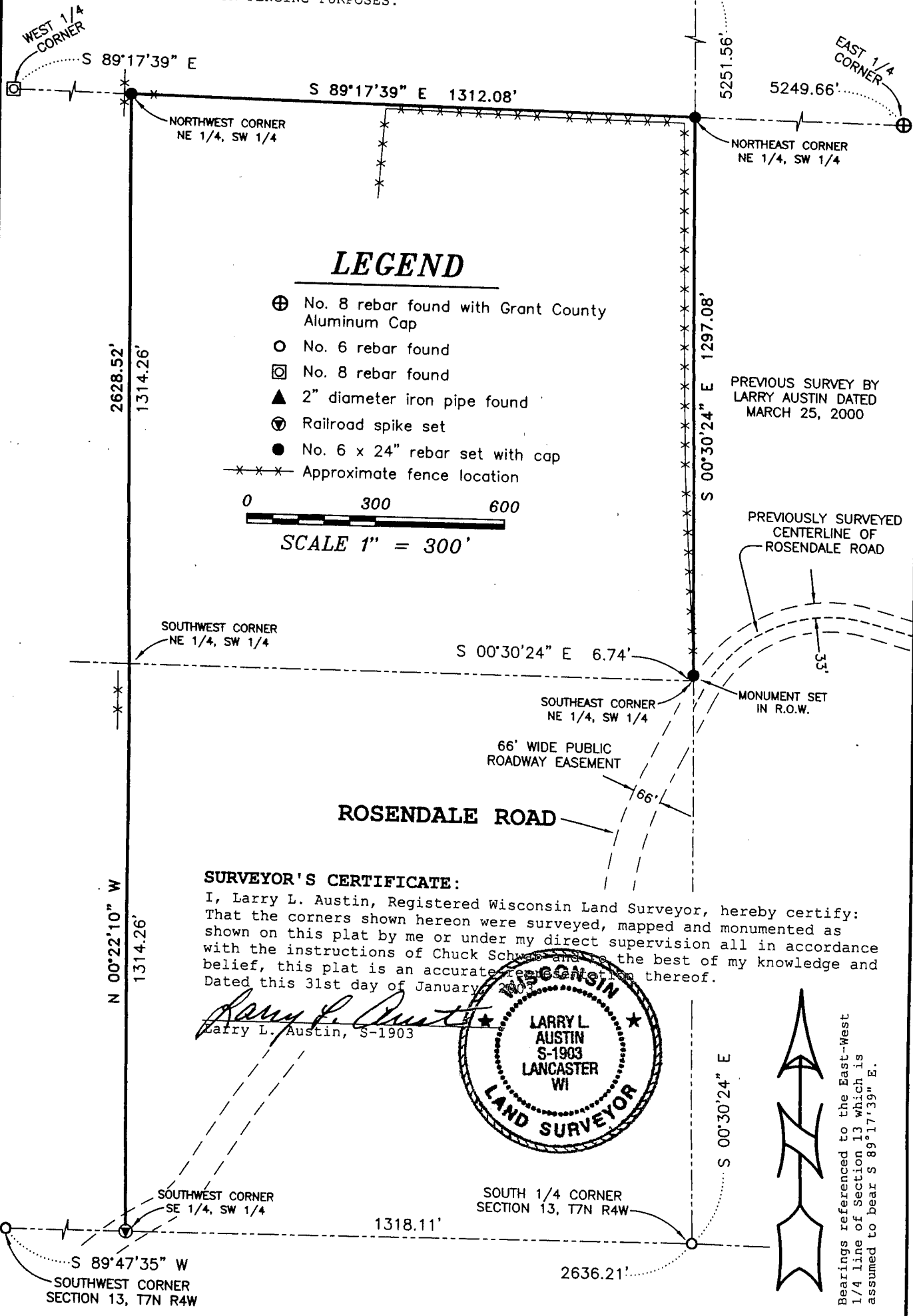


PLAT OF SURVEY

SURVEYOR'S NOTES:

THIS SURVEY WAS NOT PREPARED AS A LAND DIVISION. NUMEROUS TEMPORARY POINTS WERE ESTABLISHED ALONG THE LINES BETWEEN THE MONUMENTED CORNERS FOR FENCING PURPOSES.

NORTH 1/4 CORNER SECTION 13, T7N R4W



LEGEND

- ⊕ No. 8 rebar found with Grant County Aluminum Cap
- No. 6 rebar found
- ⊠ No. 8 rebar found
- ▲ 2" diameter iron pipe found
- Ⓡ Railroad spike set
- No. 6 x 24" rebar set with cap
- x-x-x- Approximate fence location

0 300 600

SCALE 1" = 300'

PREVIOUS SURVEY BY LARRY AUSTIN DATED MARCH 25, 2000

PREVIOUSLY SURVEYED CENTERLINE OF ROSENDALE ROAD

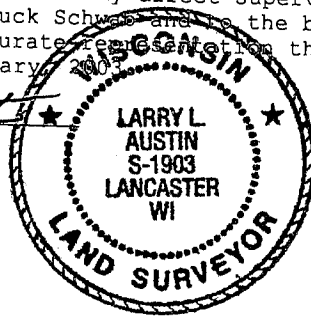
66' WIDE PUBLIC ROADWAY EASEMENT

ROSENDALE ROAD

SURVEYOR'S CERTIFICATE:

I, Larry L. Austin, Registered Wisconsin Land Surveyor, hereby certify: That the corners shown hereon were surveyed, mapped and monumented as shown on this plat by me or under my direct supervision all in accordance with the instructions of Chuck Schwab and to the best of my knowledge and belief, this plat is an accurate representation thereof. Dated this 31st day of January, 2003.

Larry L. Austin
Larry L. Austin, S-1903



Bearings referenced to the East-West 1/4 line of Section 13 which is assumed to bear S 89°17'39" E.

Prepared For: CHUCK SCHWAB

AUSTIN ENGINEERING, LLC
4211 HWY 81 E, LANCASTER, WI 53813
PHONE 608-723-6363 FAX 608-723-6702

JOB NO: 02S342
FIELDBOOK: 2219
G:\T7NR4W\13
C:\AJA\T7NR4W\13\02S342-SCHWAB

DRAWN BY: AJ AUSTIN
APPROVED: LL AUSTIN
CREW: BS - SB - BD

SHEET 1 OF 1

MAY 13 2003