

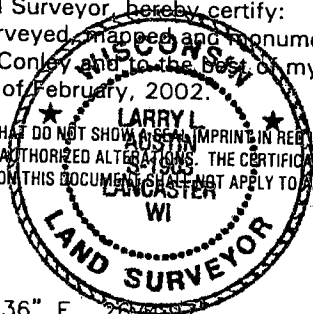
# PLAT OF SURVEY for DAVE CONLEY

**SURVEYOR'S CERTIFICATE:**

I, Larry L. Austin, Registered Wisconsin Land Surveyor, hereby certify:  
 That the lines as shown on this plat were surveyed, mapped and monumented by me or under my direct supervision all in accordance with the instructions of Dave Conley and to the best of my knowledge and belief, this plat is an accurate representation thereof. Dated this 9th day of February, 2002.

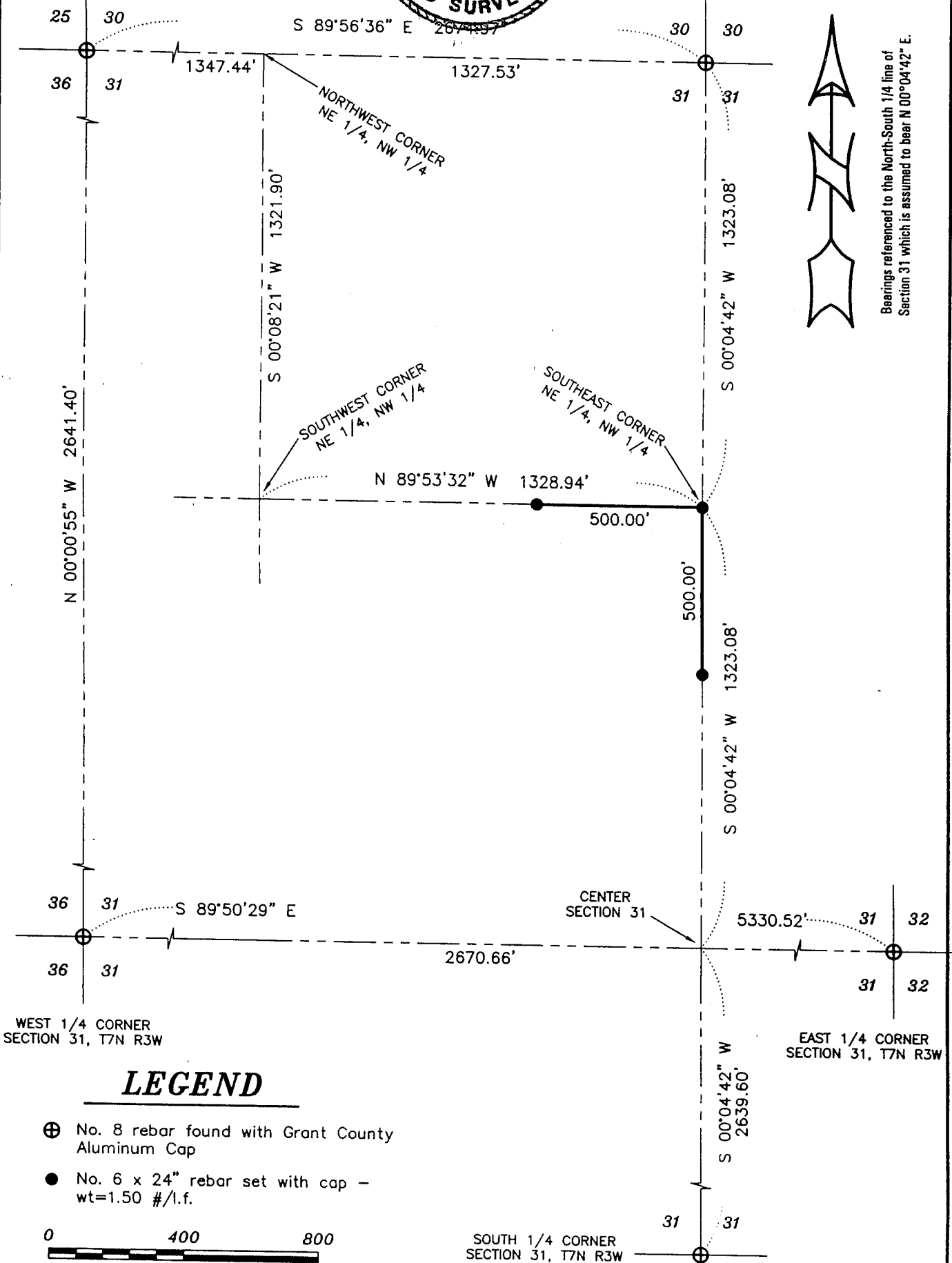
*Larry L. Austin*  
 Larry L. Austin, S-1903

ALL PLANS THAT DO NOT SHOW AN IMPRINT IN RED INK MAY CONTAIN UNAUTHORIZED ALTERATIONS. THE CERTIFICATION CONTAINED ON THIS DOCUMENT SHALL NOT APPLY TO ANY COPIES.



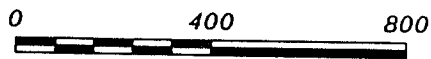
NORTHWEST CORNER  
 SECTION 31, T7N R3W

NORTH 1/4 CORNER  
 SECTION 31, T7N R3W



**LEGEND**

- ⊕ No. 8 rebar found with Grant County Aluminum Cap
- No. 6 x 24" rebar set with cap - wt=1.50 #/l.f.



SCALE 1" = 400'

**AUSTIN ENGINEERING, LLC**  
 4211 HWY 81 E, LANCASTER, WI 53813  
 PHONE 608-723-6363 FAX 608-723-6702

FIELDBOOK: SDR33  
 G:\T7NR3W\19  
 C:\AJA\T7NR3W\31CD-CONLEY

DRAWN BY: AJ AUSTIN  
 APPROVED: LL AUSTIN  
 CREW: BS - SB

OCT 16 2002