

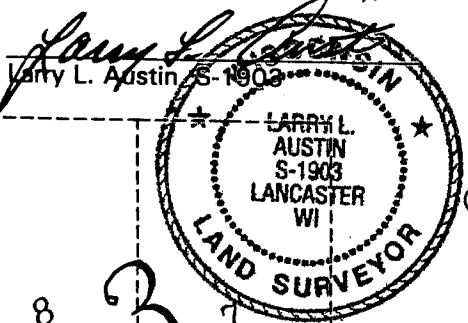
PLAT OF RESURVEY for LOWELL MACK

DESCRIPTION PROVIDED:

PROPERTY DESCRIBED IN WARRANTY DEED VOLUME 759, PAGE 645, DOCUMENT NO. 581016, GRANT COUNTY REGISTRY AND BEING DESCRIBED AS FOLLOWS:
 Lots 31, 32, 33, 116, 117 and 118, EXCEPT the East 1/2 of Lots 31 and 118, all in the Village of Glen Haven, Grant County, Wisconsin, according to the recorded map or plat thereof.

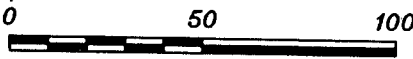
SURVEYOR'S CERTIFICATE:

I, Larry L. Austin, Registered Wisconsin Land Surveyor, hereby certify:
 That the above description was surveyed, mapped and monumented as shown on this plat by me or under my direct supervision all in accordance with the instructions of Lowell Mack and to the best of my knowledge and belief, this plat is an accurate representation thereof.
 Dated this 14th day of January, 2002.

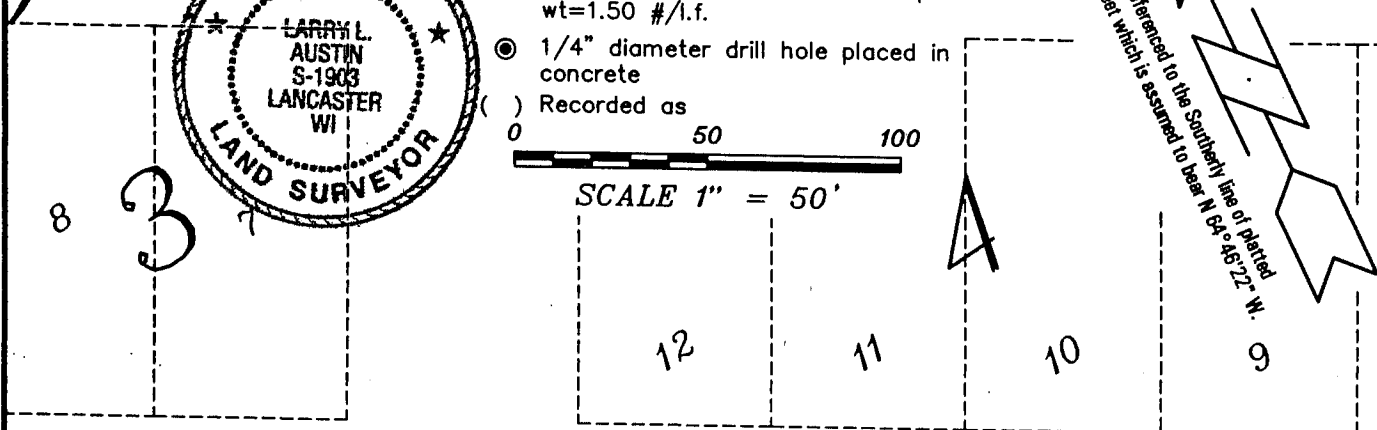
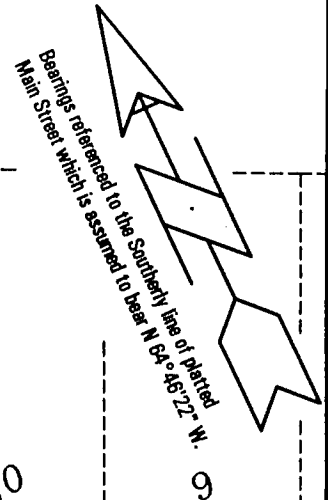


LEGEND

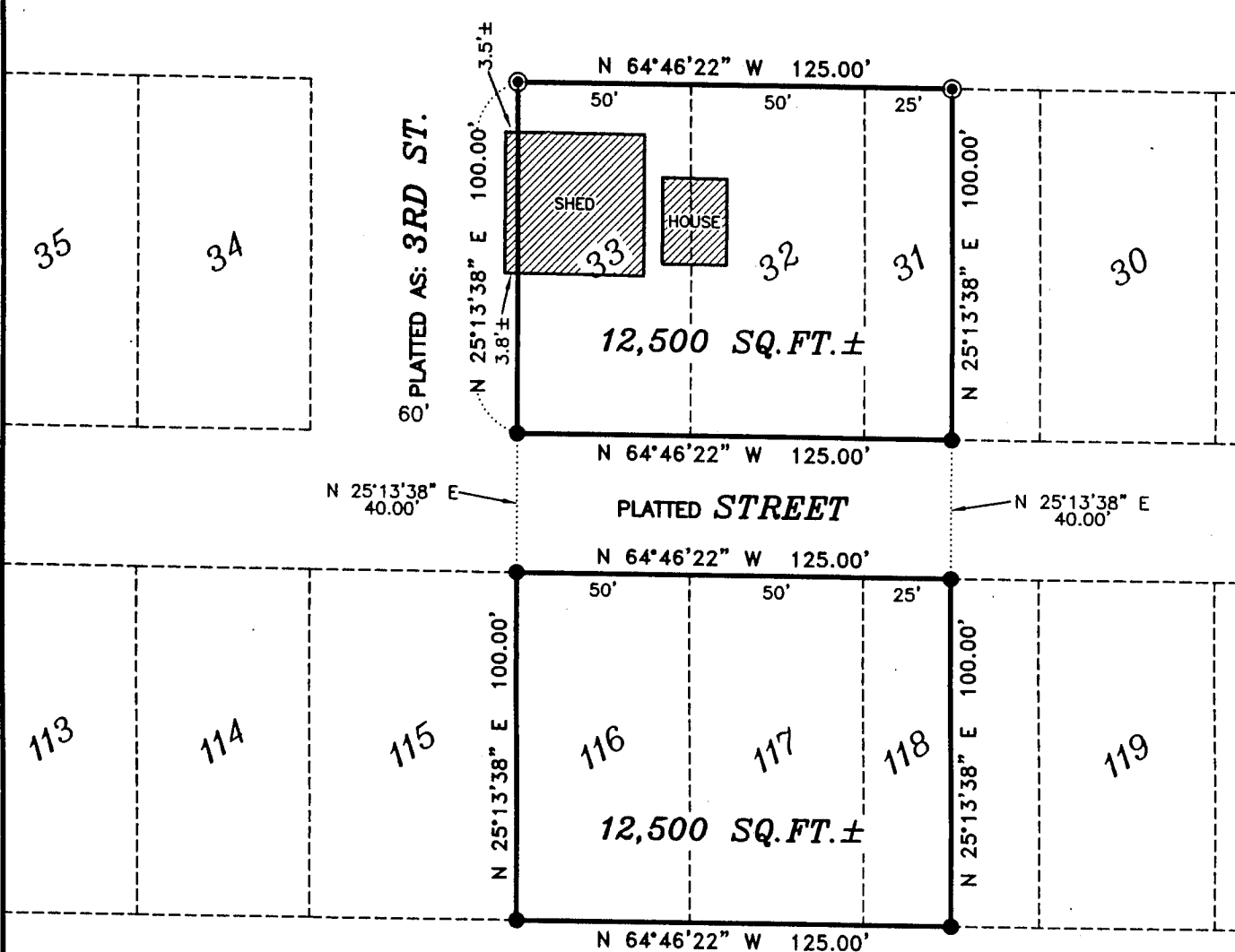
- No. 6 x 24" rebar set with cap - wt=1.50 #/l.f.
- ⊙ 1/4" diameter drill hole placed in concrete
-) Recorded as



SCALE 1" = 50'



PLATTED AS: **MAIN ST.**
 (N 65° 45' W)



AUSTIN ENGINEERING, LLC
 4211 HWY 81 E, LANCASTER, WI 53813
 PHONE 608-723-6363 FAX 608-723-6702

FIELDBOOK: 2113
 G:\T4NR6W\15
 C:\AJA\GLENHAVEN\MACK2

DRAWN BY: AJ AUSTIN
 APPROVED: LL AUSTIN
 CREW: BS - SA - BD