

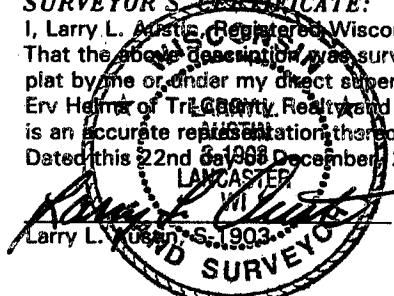
# PLAT OF SURVEY for ERV HELMS

**DESCRIPTION:**

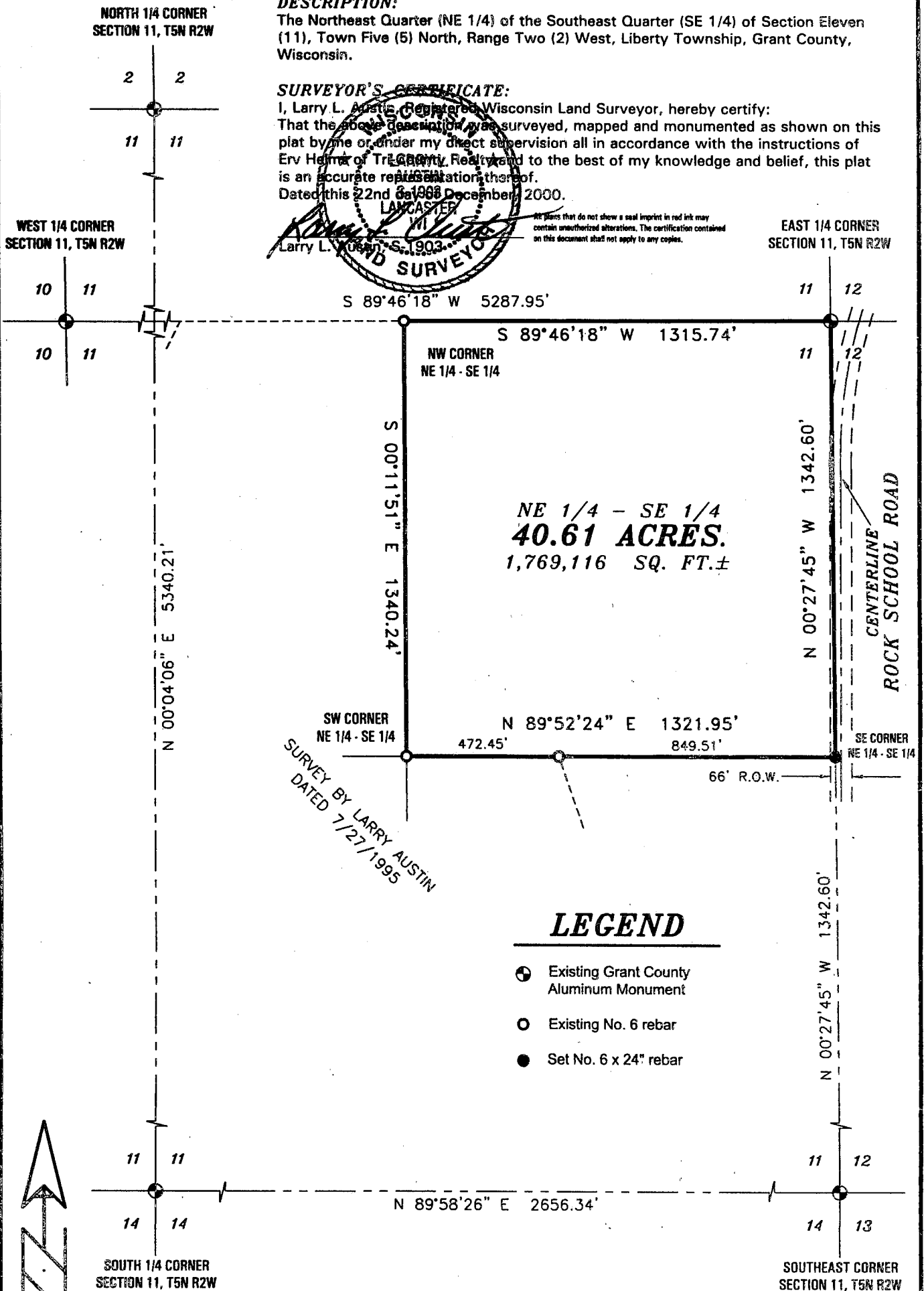
The Northeast Quarter (NE 1/4) of the Southeast Quarter (SE 1/4) of Section Eleven (11), Town Five (5) North, Range Two (2) West, Liberty Township, Grant County, Wisconsin.

**SURVEYOR'S CERTIFICATE:**

I, Larry L. Austin, Registered Wisconsin Land Surveyor, hereby certify: That the above described land was surveyed, mapped and monumented as shown on this plat by me or under my direct supervision all in accordance with the instructions of Erv Helms of Tricounty Realty and to the best of my knowledge and belief, this plat is an accurate representation thereof. Dated this 22nd day of December, 2000.



All plans that do not show a seal imprint in red ink may contain unauthorized alterations. The certification contained on this document shall not apply to any copies.

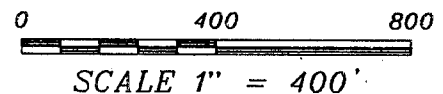


**LEGEND**

- ⊕ Existing Grant County Aluminum Monument
- Existing No. 6 rebar
- Set No. 6 x 24" rebar



Bearings referenced to the East-West 1/4 line of Section 11 which is assumed to bear S 89° 46' 18" W



**AUSTIN ENGINEERING, LLC**  
 4211 HWY 81 E, LANCASTER, WI 53813  
 PHONE 608-723-6363 FAX 608-723-6702

FIELDBOOK: 9504, 2040  
 G:1T5NR2W11  
 C:1AJA1T5NR2W11TCR-TRICOUNTY

DRAWN BY: AJ AUSTIN  
 APPROVED: LL AUSTIN  
 CREW: BS - SB