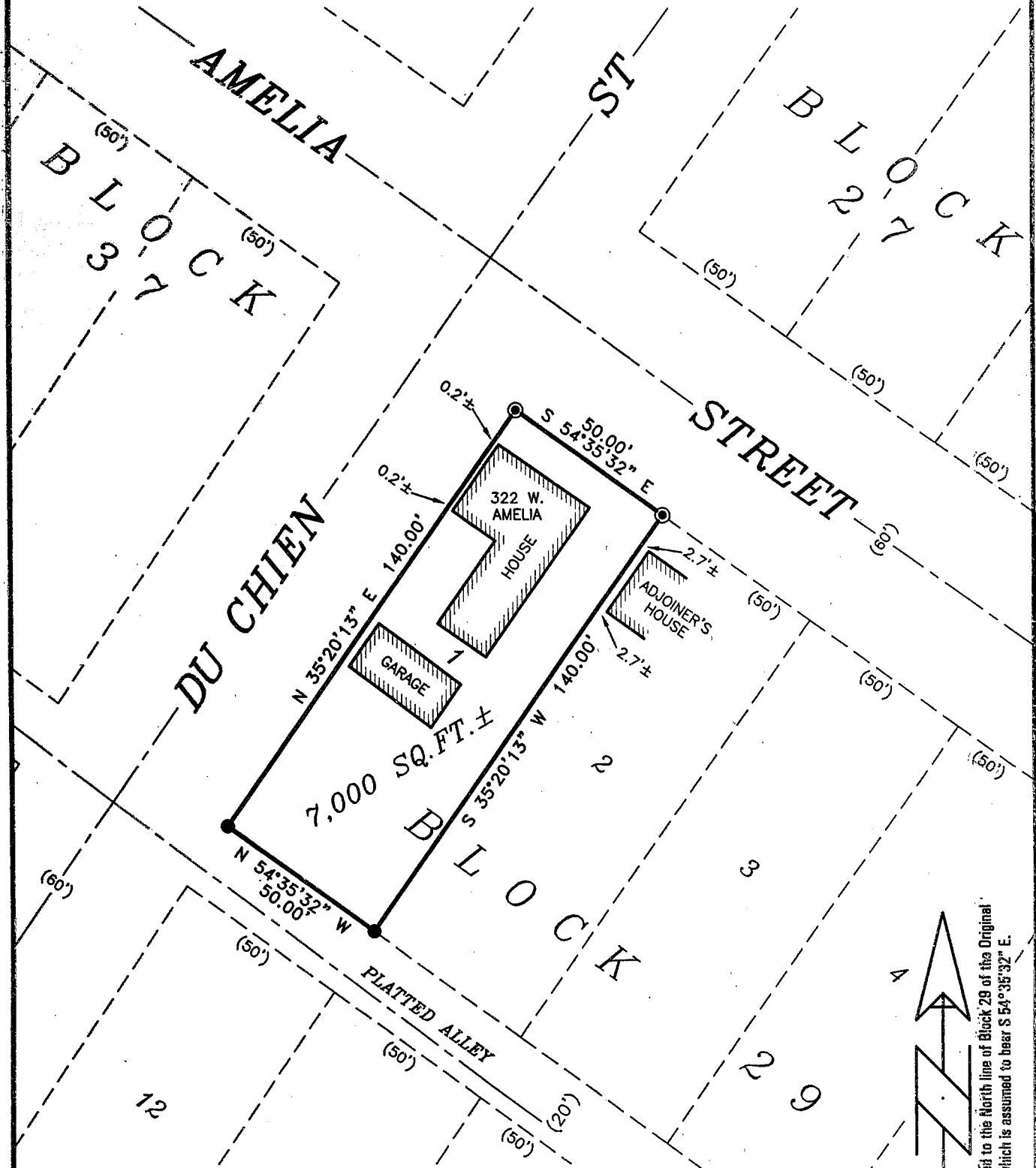


PLAT OF SURVEY for SHARON KLINGER-KINGSLEY

LOCATED IN BLOCK 29, ORIGINAL PLAT OF THE VILLAGE OF CASSVILLE, GRANT COUNTY, WISCONSIN



DESCRIPTION PROVIDED:

Lot One (1) of Block Nineteen (19) of the Village of Cassville, Grant County, Wisconsin, according to the recorded map or plat thereof. Situated in Grant County, State of Wisconsin.

SURVEYOR'S CERTIFICATE:

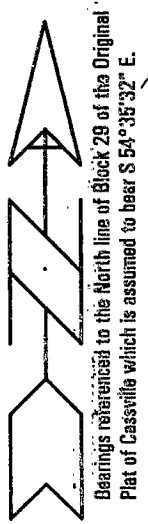
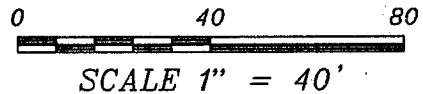
I, Larry L. Austin, Registered Wisconsin Land Surveyor, hereby certify: That the above description was surveyed, mapped and monumented as shown on this plat by me or under my direct supervision all in accordance with the instructions of Steve Hochhausen of Rountree Realty, and to the best of my knowledge and belief, this plat is an accurate representation thereof. Dated this 13th day of July, 2001.

Larry L. Austin, 1903
 LARRY L. AUSTIN
 LAND SURVEYOR
 LANCASTER
 WI

ALL PLATS THAT DO NOT SHOW A SEAL IMPRINT IN RED INK MAY CONTAIN UNAUTHORIZED ALTERATIONS. THE CERTIFICATION CONTAINED ON THIS DOCUMENT SHALL NOT APPLY TO ANY COPIES.

LEGEND

- No. 6 x 24" rebar set with cap - wt=1.50 #/l.f.
- ⊙ 1/4" diameter drill hole placed in concrete
- () Recorded as



AUSTIN ENGINEERING, LLC
 4211 HWY 81 E, LANCASTER, WI 53813
 PHONE 608-723-6363 FAX 608-723-6702

FIELDBOOK: 2112
 G:\CASSVILLE\WALZ
 C:\AJA\CASSVILLE\BLOCK29\KLINGER-KINGSLEY CREW: BS - SB - TA

DRAWN BY: AJ AUSTIN
 APPROVED: LL AUSTIN
 BS - SB - TA
 SHEET 1 OF 1