

PLAT OF SURVEY for RON WITTE

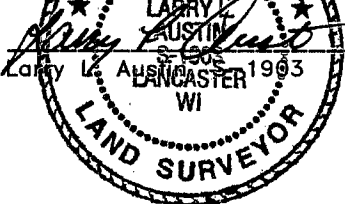
LOCATED IN BLOCK 55 OF THE ASSESSMENT PLAT TO THE CITY OF PLATTEVILLE, GRANT COUNTY, WISCONSIN

EAST 1/4 CORNER,
SECTION 9, T3N R1W

SURVEYOR'S CERTIFICATE:

I, Larry L. Austin, Registered Wisconsin Land Surveyor, hereby certify:
That the monuments shown hereon were surveyed, mapped and monumented as shown on this plat by me or under my direct supervision.
The intent of this survey is to establish the right-of-way of State Highway #81 at a projection of an existing building as directed by Ron Witte.
That to the best of my knowledge and belief, this plat is an accurate representation thereof.
That all plans that do not show a seal imprint in red ink may contain unauthorized alterations.
The certificate contained on this document shall not apply to any copies.

Dated this 1st day of February, 2001.



LEGEND

- Existing Stone Monument
- ⊙ Existing PK Nail
- Set No. 6 x 24" rebar with cap
- ⊕ Utility Pole

Bearings referenced to the East line of the SE 1/4 of Section 9 which is assumed to bear S 00°15'09" E.



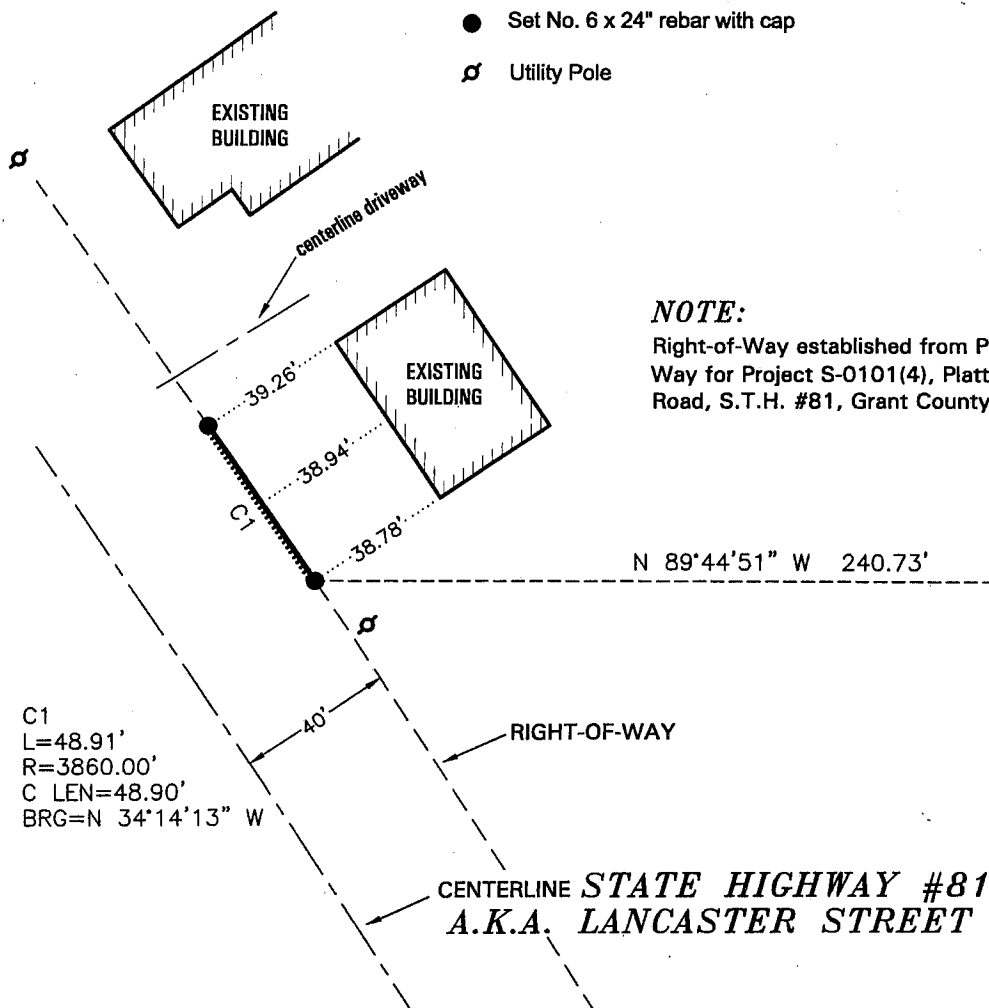
660.67'

S 00°15'09" W 2660.85'

2000.18'

NOTE:

Right-of-Way established from Plat of Right of Way for Project S-0101(4), Platteville-Lancaster Road, S.T.H. #81, Grant County, Wisconsin.



0 50 100

SCALE 1" = 50'

SOUTHEAST CORNER,
SECTION 9, T3N R1W

AUSTIN ENGINEERING, LLC
4211 HWY 81 E, LANCASTER, WI 53813
PHONE 608-723-6363 FAX 608-723-6702

FIELDBOOK: 9410
G: T3NR1W109
C: A|A|P|VILLE|A|P|BLK55|WITTE

DRAWN BY: AJ AUSTIN
APPROVED: LL AUSTIN
CREW: BS - SB

SHEET 1 OF 1

MAY 24 2001