

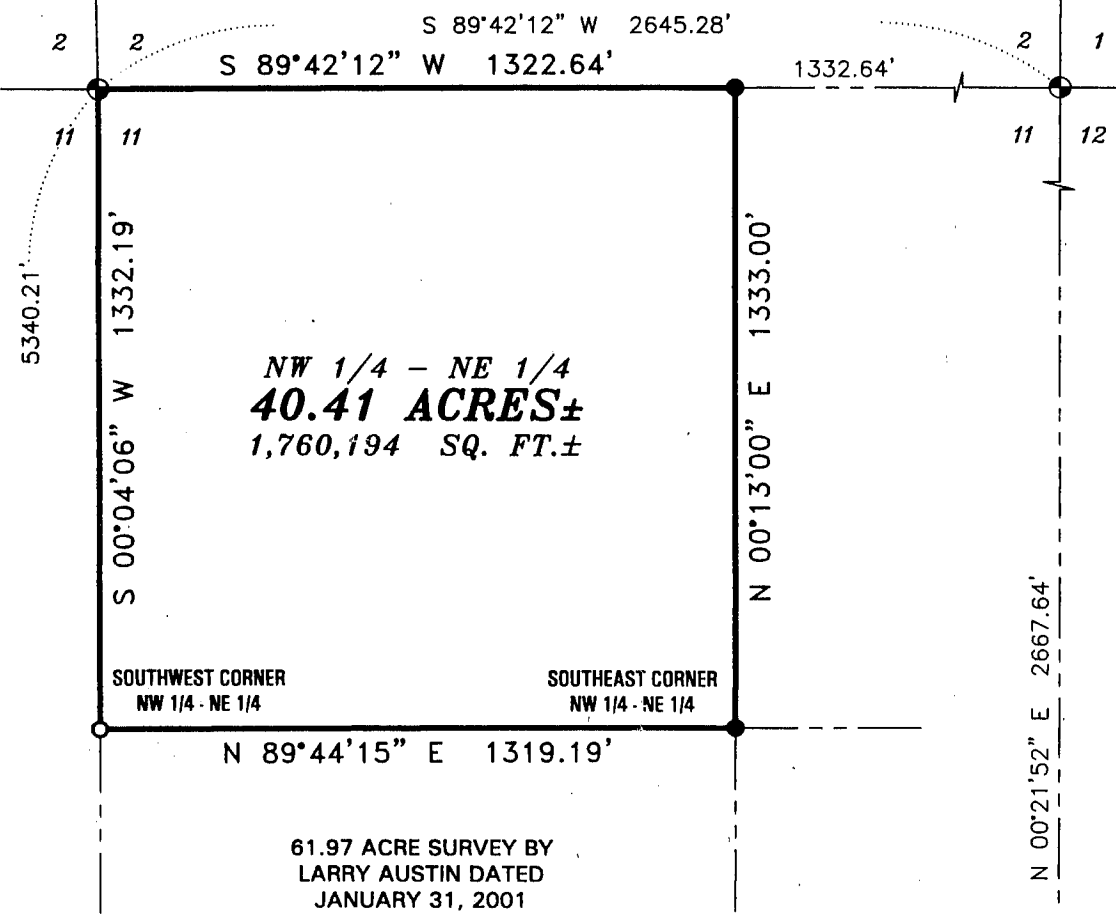
PLAT OF SURVEY for ERV HELMS

Bearings referenced to the East-West 1/4 line of Section 11 which is assumed to bear S 89° 46' 18" W



NORTH 1/4 CORNER
SECTION 11, T5N R2W

NORTHEAST CORNER
SECTION 11, T5N R2W



NW 1/4 - NE 1/4
40.41 ACRES±
1,760,194 SQ. FT.±

SOUTHWEST CORNER
NW 1/4 - NE 1/4

SOUTHEAST CORNER
NW 1/4 - NE 1/4

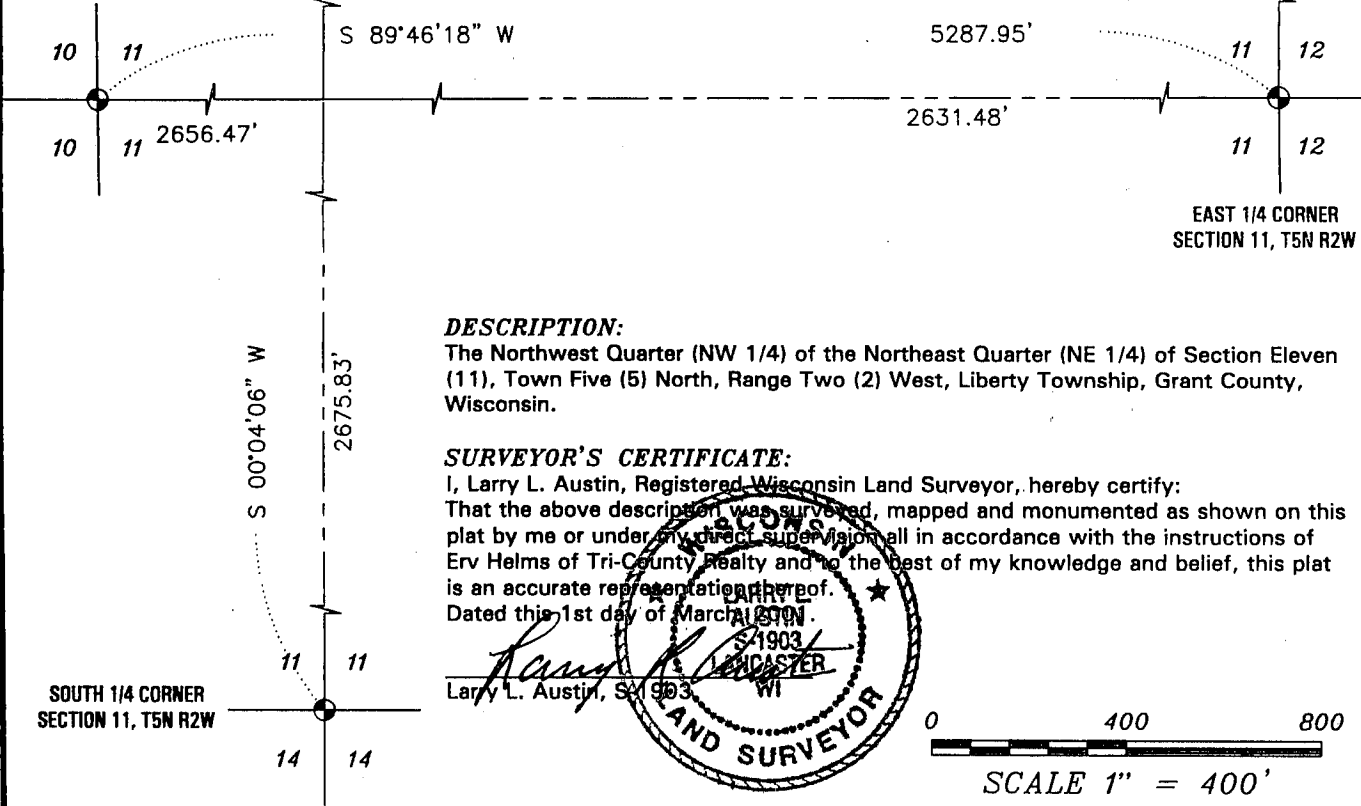
61.97 ACRE SURVEY BY
LARRY AUSTIN DATED
JANUARY 31, 2001

LEGEND

- Existing Grant County Aluminum Monument
- Existing No. 6 rebar
- Set No. 6 x 24" rebar

WEST 1/4 CORNER
SECTION 11, T5N R2W

EAST 1/4 CORNER
SECTION 11, T5N R2W



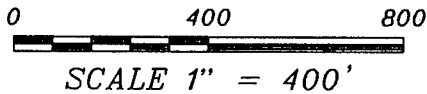
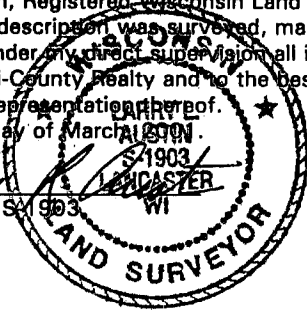
DESCRIPTION:

The Northwest Quarter (NW 1/4) of the Northeast Quarter (NE 1/4) of Section Eleven (11), Town Five (5) North, Range Two (2) West, Liberty Township, Grant County, Wisconsin.

SURVEYOR'S CERTIFICATE:

I, Larry L. Austin, Registered Wisconsin Land Surveyor, hereby certify:
That the above description was surveyed, mapped and monumented as shown on this plat by me or under my direct supervision all in accordance with the instructions of Erv Helms of Tri-County Realty and to the best of my knowledge and belief, this plat is an accurate representation thereof.
Dated this 1st day of March 2001.

Larry L. Austin
Larry L. Austin, S 1903
LANCASTER, WI



AUSTIN ENGINEERING, LLC
4211 HWY 81 E, LANCASTER, WI 53813
PHONE 608-723-6363 FAX 608-723-6702

FIELDBOOK: 9504, 2040
G:\T5NR2W\11
C:\AJA\T5NR2W\11DV3

DRAWN BY: AJ AUSTIN
APPROVED: LL AUSTIN
CREW: BS - SB