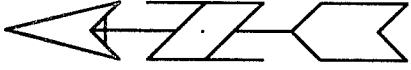
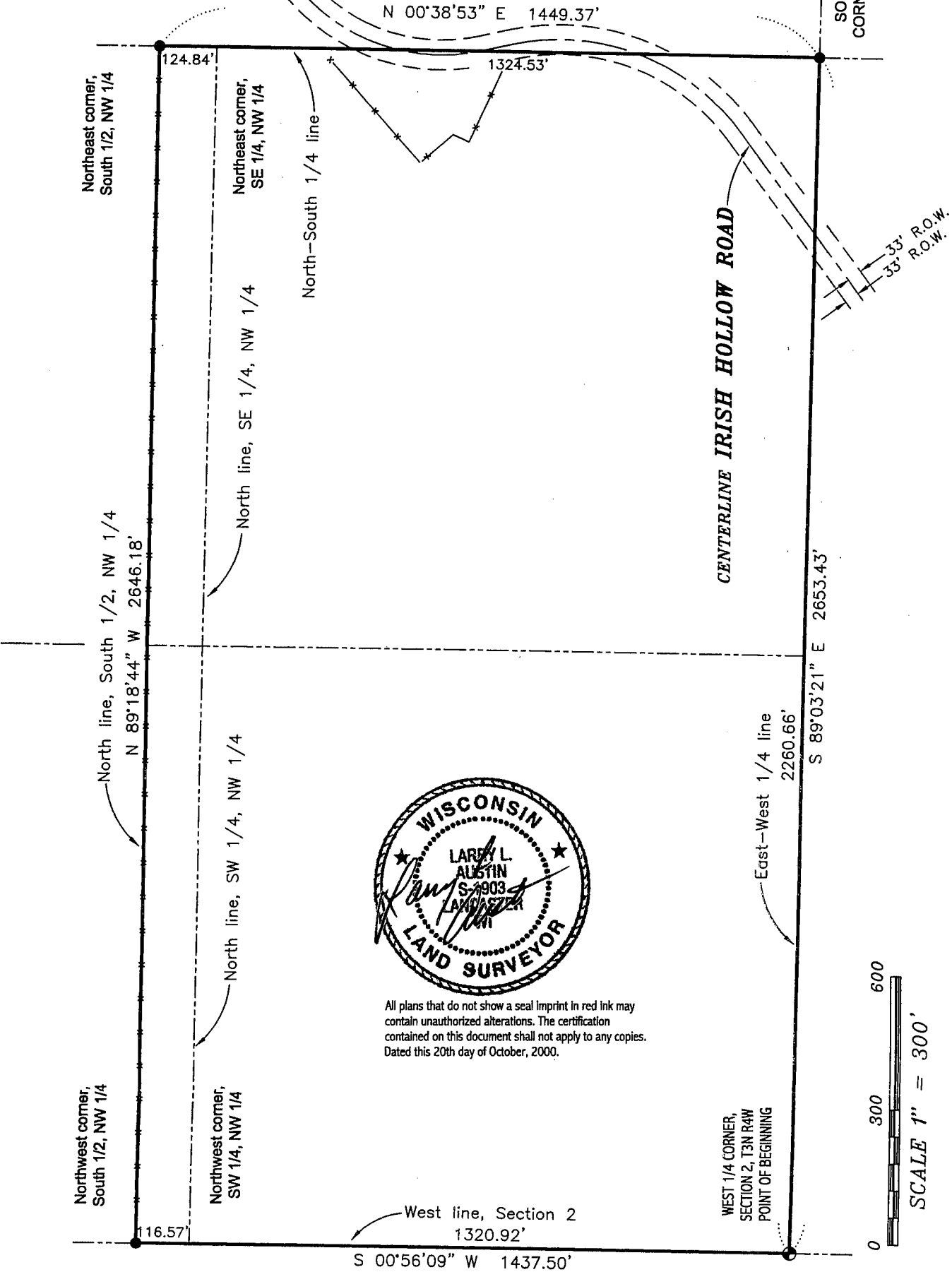


# PLAT OF SURVEY for LEROY STRYE

LOCATED IN THE NW 1/4 OF THE NW 1/4, THE NE 1/4 OF THE NW 1/4, THE SE 1/4 OF THE NW 1/4 AND THE SW 1/4 OF THE NW 1/4 OF SECTION 2, T3N R4W, GRANT COUNTY, WISCONSIN



Bearings referenced to the North-South 1/4 line of Section 2 which is assumed to bear N 00° 38' 53" E.



Prepared For: LeRoy Strye

**AUSTIN ENGINEERING, LLC**  
 4211 HWY 81 E, LANCASTER, WI 53813  
 PHONE 608-723-6363 FAX 608-723-6702

FIELDBOOK: SDR33, 2031  
 G:\T3NR4W\15A  
 C:\AJA\T3NR4W\02LS2-STRYE2

DRAWN BY: AJ AUSTIN  
 APPROVED: LL AUSTIN  
 CREW: BS-SB-SA-TF



# PLAT OF SURVEY for LEROY STRYE

LOCATED IN THE NW 1/4 OF THE NW 1/4, THE NE 1/4 OF THE NW 1/4, THE SE 1/4 OF THE NW 1/4 AND THE SW 1/4 OF THE NW 1/4 OF SECTION 2, T3N R4W, GRANT COUNTY, WISCONSIN

## SURVEYOR'S CERTIFICATE:

I, Larry L. Austin, Registered Wisconsin Land Surveyor, hereby certify:

That the Northwest corner of the South Half (S 1/2) of the Northwest Quarter (NW 1/4), the Northeast corner of the South Half (S 1/2) of the Northwest Quarter (NW 1/4), the Southeast corner of the Northwest Quarter (NW 1/4), and the West Quarter (W 1/4) corner of Section Two (2), Town Three (3) North, Range Four (4) West of the 4th P.M., Grant County, Wisconsin, were surveyed, mapped and monumented as shown on this plat by me or under my direct supervision.

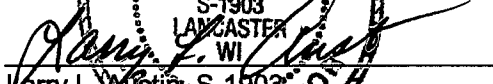
That this survey was prepared under the direction of LeRoy Strye.

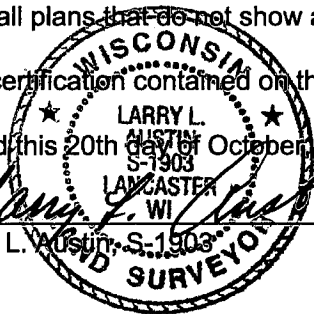
That to the best of my knowledge and belief, this plat is an accurate representation thereof.

That all plans that do not show a seal imprint in red ink may contain unauthorized alterations.

The certification contained on this document shall not apply to any copies.

Dated this 20th day of October, 2000.

  
Larry L. Austin, S-1903



Prepared For: LeRoy Strye

**AUSTIN ENGINEERING, LLC**  
4211 HWY 81 E, LANCASTER, WI 53813  
PHONE 608-723-6363 FAX 608-723-6702

FIELDBOOK: SDR33, 2031  
G:\T3NR4W\15A  
C:\AJA\T3NR4W\02LS2-STRYE2

DRAWN BY: AJ AUSTIN  
APPROVED: LL AUSTIN  
CREW: BS-SB-SA-TF

SHEET 3 OF 3