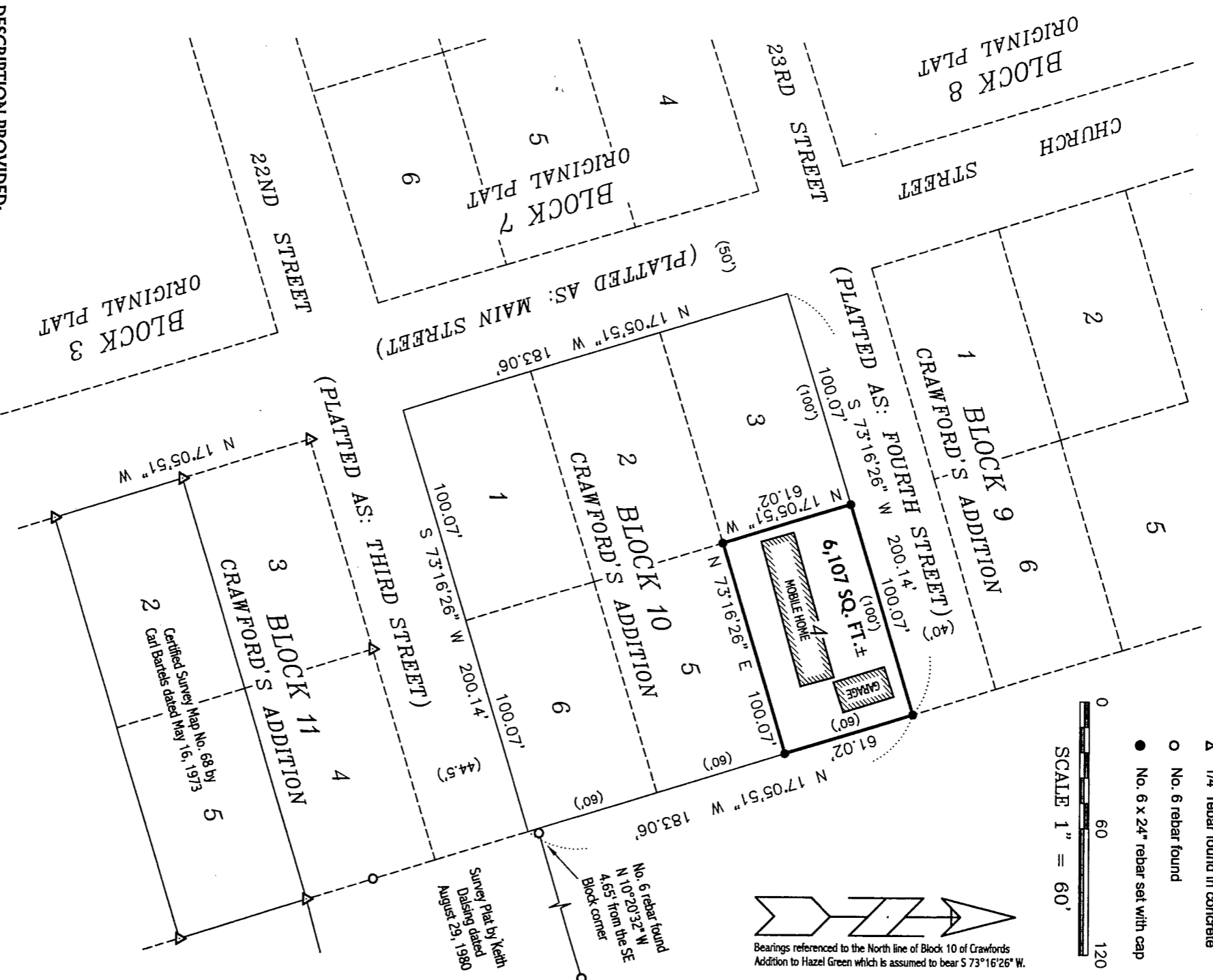
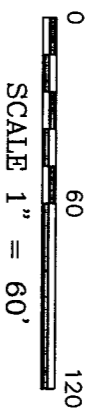


PLAT OF SURVEY for RICHARD VOSBERG



LEGEND

- ▲ 1/4" rebar found in concrete
- No. 6 rebar found
- No. 6 x 24" rebar set with cap



DESCRIPTION PROVIDED:
 Lot 4 in Block 10 of Crawford's Addition to the Village of Hazel Green, Grant County, Wisconsin, according to the recorded map or plat thereof.

SURVEYOR'S CERTIFICATE:

I, Larry L. Austin, Registered Wisconsin Land Surveyor, hereby certify:
 That the above description was surveyed, mapped and monumented as shown on this plat by me or under my direct supervision.
 That this survey was prepared under the direction of Rich Vosberg.
 That to the best of my knowledge and belief, this plat is an accurate representation thereof.
 That all plans that do not show a special printed legend ink may contain unauthorized alterations.
 The certification contained on this department shall not apply to any copies.
 Dated this 25th day of August, 2000.



AUSTIN ENGINEERING, LLC
 4211 HWY 81 E, LANCASTER, WI 53813
 PHONE 608-723-6363 FAX 608-723-6702

FIELDBOOK: 9905.2012
 G:\H\Z\GREEN\LOWWER
 C:\M\H\Z\GREEN\CRAWFORDS\BLOCK10\LOT4\N

DRAWN BY: AL AUSTIN
 APPROVED: LL AUSTIN
 CREW: BS - SB

SHEET 1 OF 1

OCT 13 2000