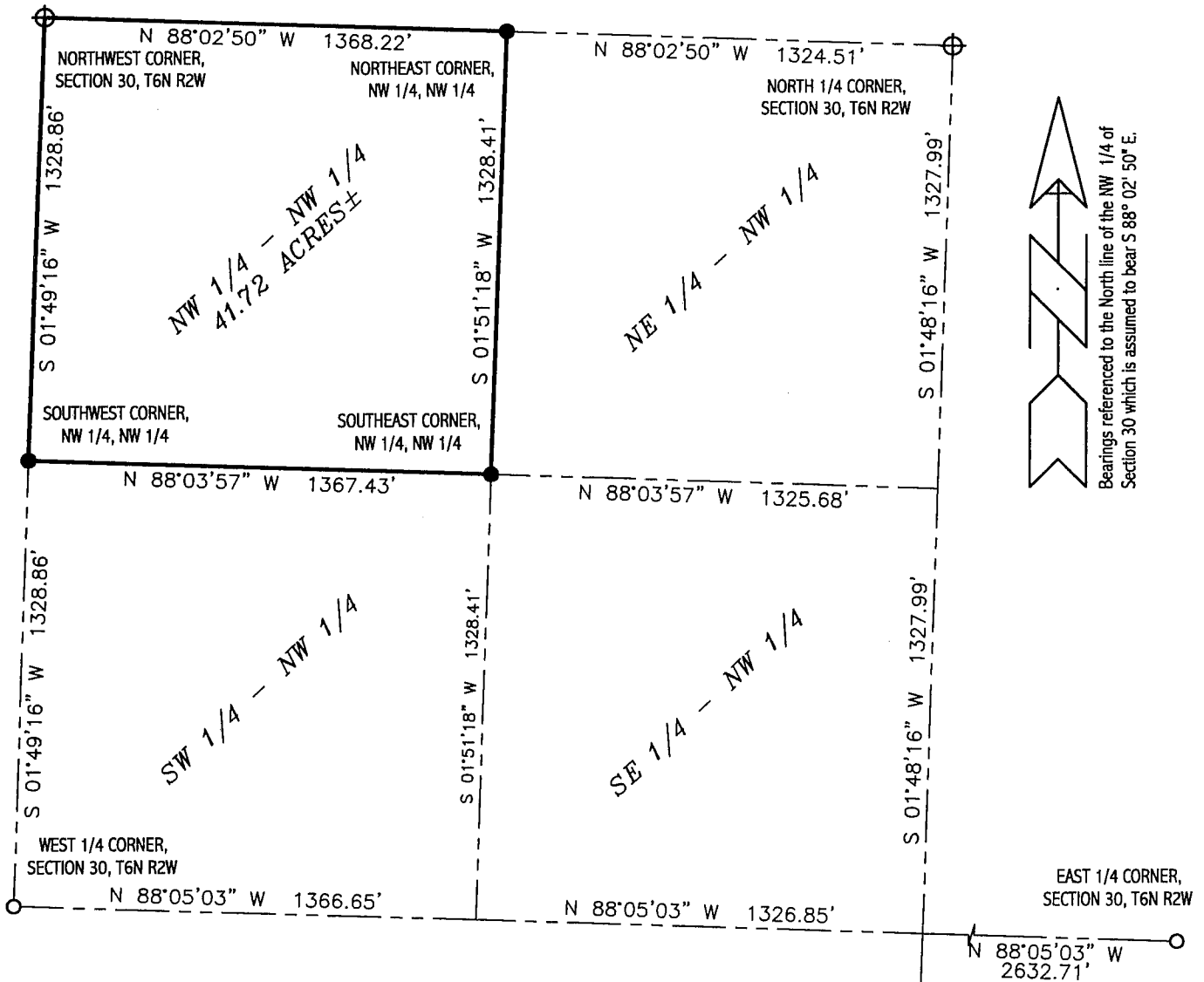


PLAT OF SURVEY for BILL BARNES



DESCRIPTION:

The Northwest Quarter (NW 1/4) of the Northwest Quarter (NW 1/4) of Section Thirty (30), Town Six (6) North, Range Two (2) West of the 4th P.M., Grant County, Wisconsin.

SURVEYOR'S CERTIFICATE:

I, Larry L. Austin, Registered Wisconsin Land Surveyor, hereby certify: That the above description was surveyed, mapped and monumented as shown on this plat by me or under my direct supervision.

That this survey was prepared under the direction of Bill Barnes and to the best of my knowledge and belief, this plat is an accurate representation thereof.

That all plats that do not show a seal imprint in red ink may contain unauthorized alterations.

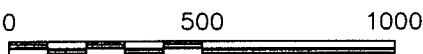
The certification contained on this document shall not apply to any copies.

Dated this 21st day of August, 2000.

Larry L. Austin
 LARRY L. AUSTIN
 LANCASTER, WI
 L.S. 1903
 LAND SURVEYOR

LEGEND

- ⊙ GRANT COUNTY ALUMINUM MONUMENT FOUND
- ⊕ D.O.T. ALUMINUM MONUMENT FOUND
- NO. 6 REBAR FOUND WITH GRANT COUNTY ALUMINUM CAP
- NO. 6 x 24" REBAR SET WITH CAP



SCALE 1" = 500'

S 01°48'16" W 2663.28'

⊕ SOUTH 1/4 CORNER, SECTION 30, T6N R2W

AUSTIN ENGINEERING, LLC
 4211 HWY 81 E, LANCASTER, WI 53813
 PHONE 608-723-6363 FAX 608-723-6702

FIELDBOOK: 2009
 G:\T6NR2W\30
 C:\A\T6NR2W\30BB

DRAWN BY: AJ AUSTIN
 APPROVED: LL AUSTIN
 CREW: BS - SB

SHEET 1 OF 1

OCT 19 2000