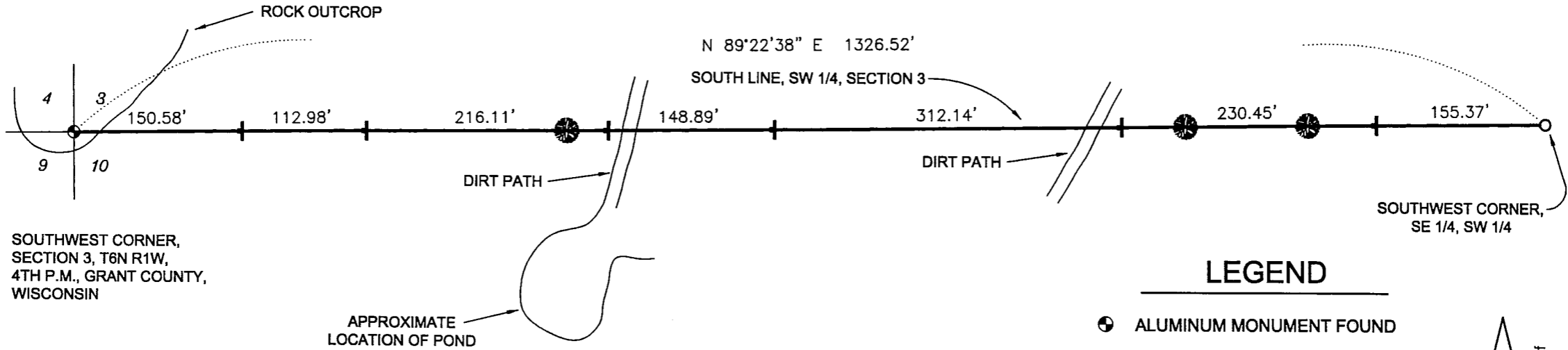


PLAT OF SURVEY for KEVIN BICKFORD

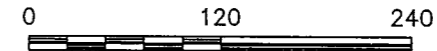


SOUTHWEST CORNER,
SECTION 3, T6N R1W,
4TH P.M., GRANT COUNTY,
WISCONSIN

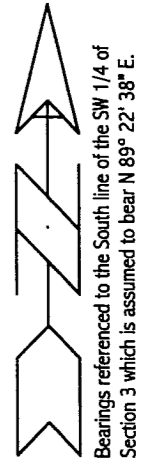
APPROXIMATE
LOCATION OF POND

LEGEND

- ALUMINUM MONUMENT FOUND
- NO. 6 REBAR FOUND
- STEEL T-POST PLACED WITH FLANGE UP
- EXISTING TREE



SCALE 1" = 120'



SURVEYOR'S CERTIFICATE:

I, Larry L. Austin, Registered Wisconsin Land Surveyor, hereby certify:

That the South line of the Southwest Quarter (SW 1/4) of the Southwest Quarter (SW 1/4) of Section Three (3), Town Six (6) North, Range One (1) West of the 4th P.M., Grant County, Wisconsin was surveyed, mapped and monumented as shown on this plat by me or under my direct supervision.

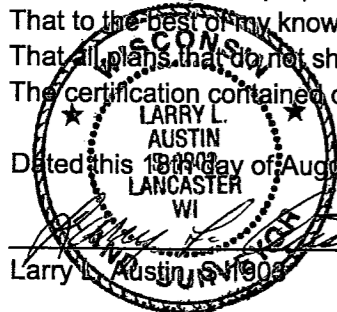
That this survey was prepared under the direction of Kevin Bickford.

That to the best of my knowledge and belief, this plat is an accurate representation thereof.

That all plans that do not show a seal imprint in red ink may contain unauthorized alterations.

The certification contained on this document shall not apply to any copies.

Dated this 18th day of August, 2000.



NOTES:

ALL PHYSICAL FEATURES SHOWN ON THIS MAP ARE APPROXIMATE.
NO DISTANCE SHOULD BE ASSUMED BY SCALING.

AUSTIN ENGINEERING, LLC
4211 HWY 81 E, LANCASTER, WI 53813
PHONE 608-723-6363 FAX 608-723-6702

FIELDBOOK: NA
G:\T6NR1W03
C:\AJA\T6NR1W03KB

DRAWN BY: AJ AUSTIN
APPROVED: LL AUSTIN
CREW: BS - SB