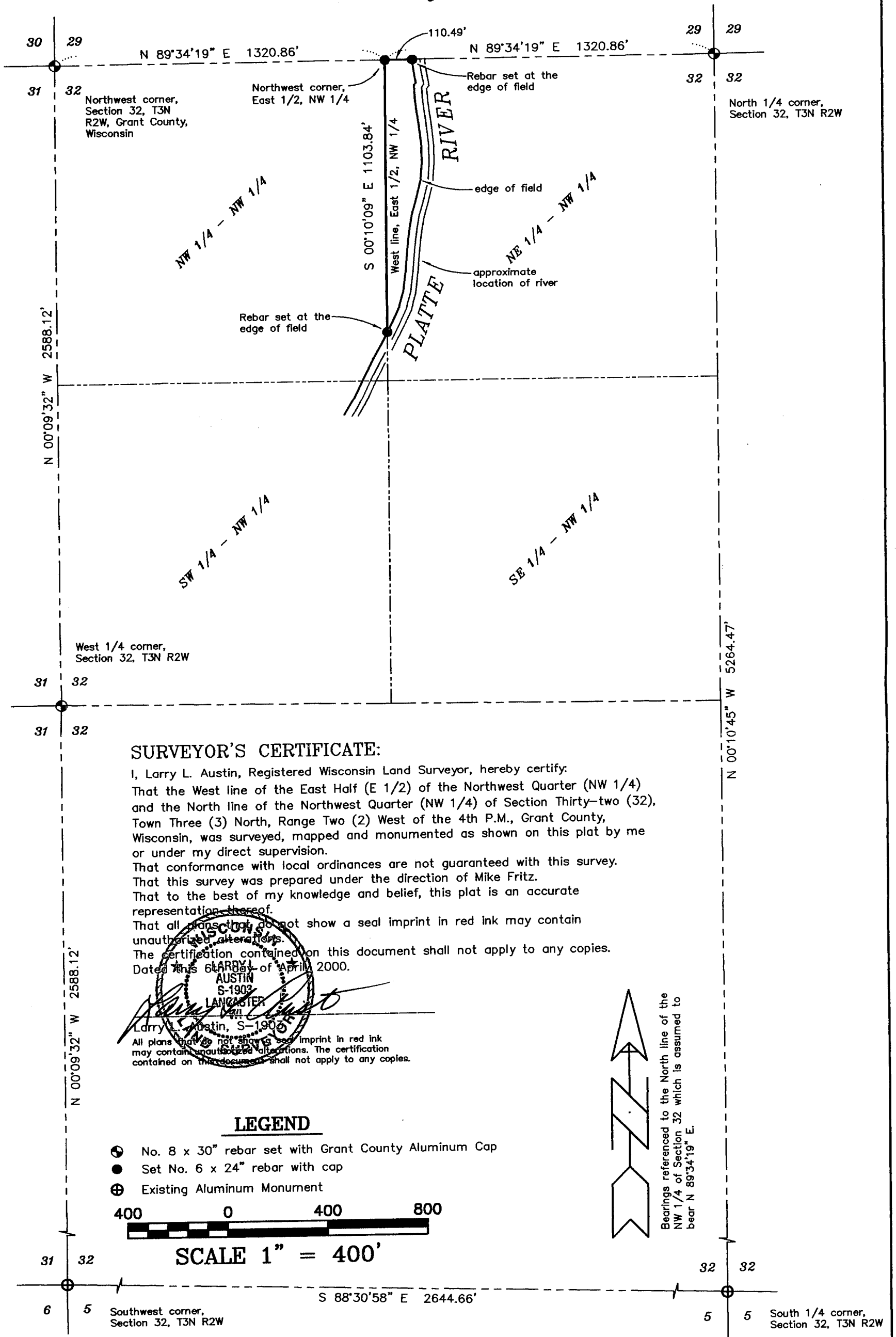


PLAT OF SURVEY for MIKE FRITZ



SURVEYOR'S CERTIFICATE:

I, Larry L. Austin, Registered Wisconsin Land Surveyor, hereby certify:
 That the West line of the East Half (E 1/2) of the Northwest Quarter (NW 1/4) and the North line of the Northwest Quarter (NW 1/4) of Section Thirty-two (32), Town Three (3) North, Range Two (2) West of the 4th P.M., Grant County, Wisconsin, was surveyed, mapped and monumented as shown on this plat by me or under my direct supervision.
 That conformance with local ordinances are not guaranteed with this survey.
 That this survey was prepared under the direction of Mike Fritz.
 That to the best of my knowledge and belief, this plat is an accurate representation thereof.
 That all plans that do not show a seal imprint in red ink may contain unauthorized alterations.
 The certification contained on this document shall not apply to any copies.
 Dated this 6th day of April, 2000.

LARRY L. AUSTIN
 S-1903
 LANCASTER, WI

Larry L. Austin, S-1903

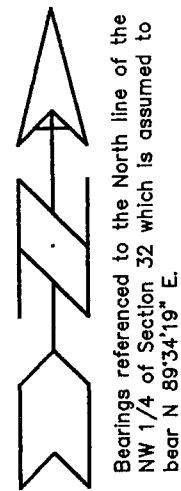
All plans that do not show a seal imprint in red ink may contain unauthorized alterations. The certification contained on this document shall not apply to any copies.

LEGEND

- ⊙ No. 8 x 30" rebar set with Grant County Aluminum Cap
- Set No. 6 x 24" rebar with cap
- ⊕ Existing Aluminum Monument



SCALE 1" = 400'



AUSTIN ENGINEERING, LLC
 4211 HWY 81 E, LANCASTER, WI 53813
 PHONE 608-723-6363 FAX 608-723-6702

FIELDBOOK: SDR33, 9320
 G: \T3NR2W\32
 C: \SC14\WORK\T3NR2W\32MF

DRAWN BY: AJ AUSTIN
 APPROVED: LL AUSTIN
 CREW: BS - SB