

PLAT OF SURVEY

SHEET 1 OF 2

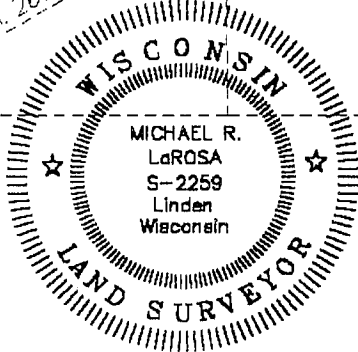
FOR: WILKINSON AUCTION & REALTY CO.
c/o PERRY WILKINSON
(POWERS PROPERTY)

Michael R. LaRosa
10/28/1998

LOT 1
C.S.M. 268

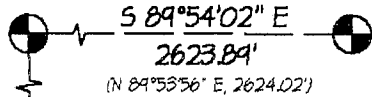
LOT 2
C.S.M. 268

LOT 3
C.S.M. 268



2" IRON PIPE OF RECORD FOUND AT NW CORNER 10, T8N, R1W

2" IRON PIPE OF RECORD FOUND AT N 1/4 CORNER 10, T8N, R1W (3' BELOW GRADE)



PLAT BEARINGS ARE REFERENCED TO THE WEST LINE OF THE NW 1/4 OF 10, T8N, R1W WHICH IS ASSUMED TO BEAR AS SHOWN.

N 00°31'12" W
1948.40'

N 00°31'12" W
1507.50'
643.64'

S 89°54'20" E
1970.50' (1980')

S 89°54'20" E
533.00'

P.O.B. N 89°54'20" W
200.00'

CENTERLINE OF S.T.H. 133

OFFICE DATA:	
JOB I.D.	98S-267
SURVEY CREW:	ML BB
FIELD BOOK NO.:	98-8
DWG. STORED:	VERSIBEP
DRAWN BY:	ML
DRAWING NO.:	<DIR>98S-267.DWG
DATA FILE NO.:	<DIR>

2.87
ACRES ±

EXISTING DRIVE (SAND)

EASEMENT (0.22 AC. ±)

GARAGE

HOUSE

275.49' (0.22 AC. ±)

625.77'

32.43'

625.77'

32.43'

625.77'

32.43'

625.77'

32.43'

625.77'

32.43'

625.77'

32.43'

625.77'

32.43'

625.77'

32.43'

625.77'

32.43'

625.77'

32.43'

625.77'

32.43'

625.77'

S 32°30'24" E
62.86'

S 09°57'03" E
74.59'

S 04°21'53" W
149.43'

(S 89° E)
49.5' R/W

S 00°35'46" E
328.74'

S 00°35'46" E
625.64'

S 89°57'07" E
200.00'

N 00°35'46" W
76.43'

NE - NW
NW - NE
SE - NW
SW - NE

SINGLE OVERHEAD WIRE

N 00°35'46" W

76.43'

200.00'

S 89°57'07" E

76.43'

200.00'

S 00°35'46" E

328.74'

625.64'

S 00°35'46" E

625.64'

S 04°21'53" W

149.43'

S 09°57'03" E

74.59'

S 32°30'24" E

62.86'

N 00°35'46" W

76.43'

200.00'

S 89°57'07" E

76.43'

200.00'

S 00°35'46" E

328.74'

625.64'

S 00°35'46" E

625.64'

S 04°21'53" W

149.43'

S 09°57'03" E

74.59'

S 32°30'24" E

62.86'

N 00°35'46" W

76.43'

200.00'

S 89°57'07" E

76.43'

200.00'

S 00°35'46" E

328.74'

625.64'

S 00°35'46" E

625.64'

S 04°21'53" W

149.43'

S 09°57'03" E

74.59'

S 32°30'24" E

62.86'

N 00°35'46" W

76.43'

200.00'

S 89°57'07" E

76.43'

200.00'

S 00°35'46" E

328.74'

625.64'

S 00°35'46" E

625.64'

S 04°21'53" W

149.43'

S 09°57'03" E

74.59'

S 32°30'24" E

62.86'

N 00°35'46" W

76.43'

200.00'

S 89°57'07" E

76.43'

200.00'

S 00°35'46" E

328.74'

625.64'

S 00°35'46" E

625.64'

S 04°21'53" W

149.43'

S 09°57'03" E

74.59'

S 32°30'24" E

62.86'

N 00°35'46" W

76.43'

200.00'

S 89°57'07" E

76.43'

200.00'

S 00°35'46" E

328.74'

625.64'

S 00°35'46" E

625.64'

S 04°21'53" W

149.43'

S 09°57'03" E

74.59'

S 32°30'24" E

62.86'

N 00°35'46" W

76.43'

200.00'

S 89°57'07" E

76.43'

200.00'

S 00°35'46" E

328.74'

625.64'

S 00°35'46" E

625.64'

S 04°21'53" W

149.43'

S 09°57'03" E

74.59'

S 32°30'24" E

62.86'

N 00°35'46" W

76.43'

200.00'

S 89°57'07" E

76.43'

200.00'

S 00°35'46" E

328.74'

625.64'

S 00°35'46" E

625.64'

S 04°21'53" W

149.43'

S 09°57'03" E

74.59'

S 32°30'24" E

62.86'

N 00°35'46" W

76.43'

200.00'

S 89°57'07" E

76.43'

200.00'

S 00°35'46" E

328.74'

625.64'

S 00°35'46" E

625.64'

S 04°21'53" W

149.43'

S 09°57'03" E

74.59'

S 32°30'24" E

62.86'

N 00°35'46" W

76.43'

200.00'

S 89°57'07" E

76.43'

200.00'

S 00°35'46" E

328.74'

625.64'

S 00°35'46" E

625.64'

S 04°21'53" W

149.43'

S 09°57'03" E

74.59'

S 32°30'24" E

62.86'

N 00°35'46" W

76.43'

200.00'

S 89°57'07" E

76.43'

200.00'

S 00°35'46" E

328.74'

625.64'

S 00°35'46" E

625.64'

S 04°21'53" W

149.43'

S 09°57'03" E

74.59'

S 32°30'24" E

62.86'

N 00°35'46" W

76.43'

200.00'

S 89°57'07" E

76.43'

200.00'

S 00°35'46" E

328.74'

625.64'

S 00°35'46" E

625.64'

S 04°21'53" W

149.43'

S 09°57'03" E

74.59'

S 32°30'24" E

62.86'

N 00°35'46" W

76.43'

200.00'

S 89°57'07" E

76.43'

200.00'

S 00°35'46" E

328.74'

625.64'

S 00°35'46" E

625.64'

S 04°21'53" W

149.43'

S 09°57

27

Plat of survey
For: Wilkinson Auction & Realty Co.
c/o Perry Wilkinson
(Powers property)
Sheet 2 of 2

PARCEL DESCRIPTION:

A parcel of land located in part of the SE 1/4 of the NW 1/4 and SW 1/4 of the NE 1/4 of Section 10, T8N, R1W, Grant County, Wisconsin, to wit:

Commencing at the W 1/4 CORNER of said Section 10; thence N 0° 31' 12" W, 693.64'; thence S 89° 59' 20" E, 1970.50'; thence continuing easterly along said line, a distance of 533.00' to the POINT OF BEGINNING; thence N 0° 35' 46" W, 625.77' to the south line of Grant County Certified Survey Map number 268; thence S 89° 57' 07" E, 200.00' along said south line; thence S 0° 35' 46" E, 625.64' to the northerly right of way line of State Trunk Highway 133; thence N 89° 59' 20" W, 200.00' along said right of way to the POINT OF BEGINNING; said described parcel containing 2.87 acres, more or less. Parcel is subject to an easement as described below. Parcel is subject to any easements of record and or usage.

EASEMENT DESCRIPTION:

A parcel of land located in part of the SE 1/4 of the NW 1/4 of Section 10, T8N, R1W, Grant County, Wisconsin, to wit:

Commencing at the W 1/4 CORNER of said Section 10; thence N 0° 31' 12" W, 693.64'; thence S 89° 59' 20" E, 1970.50'; thence continuing easterly along said line, a distance of 533.00' to the POINT OF BEGINNING; thence N 0° 35' 46" W, 275.49'; thence S 32° 30' 29" E, 62.86'; thence S 9° 57' 03" E, 74.59'; thence S 4° 21' 53" W, 149.43'; thence N 89° 59' 20" W, 32.43' to the POINT OF BEGINNING; said described parcel containing 0.22 acre, more or less.

SURVEYOR'S CERTIFICATE:

I hereby certify that I have made a survey according to the instructions and/or description furnished me and that the plat drawn is a correct representation of that survey to the best of my knowledge and belief.


Michael R. LaRosa RLS No. S-2259

10/28/1998
date

