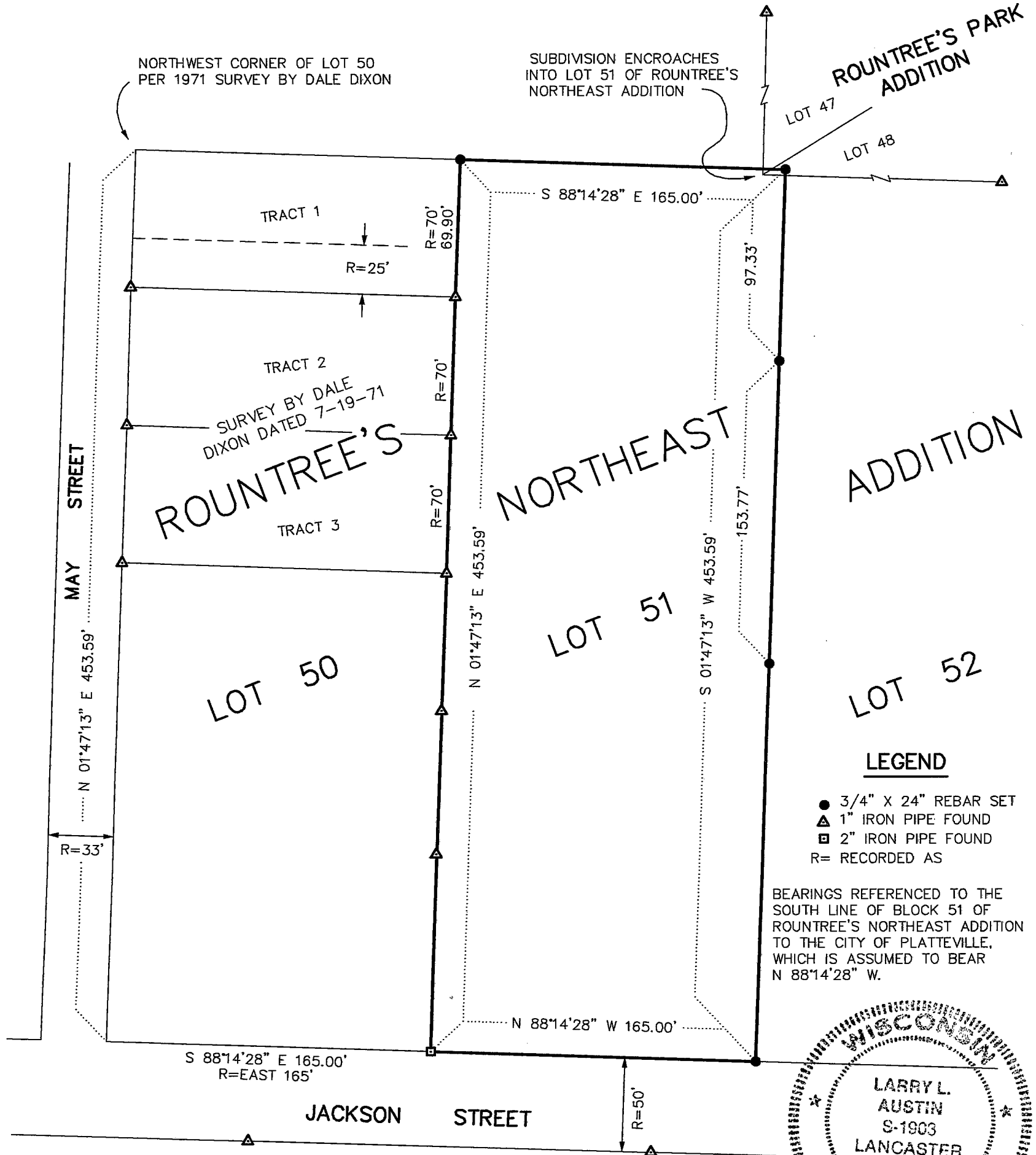


REC'D JAN 2 1998

City of Platteville, Lot 51, Rountree's North Eastern Addition

SURVEY PLAT

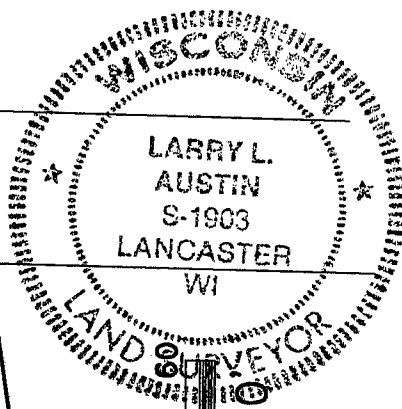
PREPARED FOR: CLIFFORD WITTE



LEGEND

- 3/4" X 24" REBAR SET
- ▲ 1" IRON PIPE FOUND
- 2" IRON PIPE FOUND
- R= RECORDED AS

BEARINGS REFERENCED TO THE SOUTH LINE OF BLOCK 51 OF ROUNTREE'S NORTHEAST ADDITION TO THE CITY OF PLATTEVILLE, WHICH IS ASSUMED TO BEAR N 88°14'28" W.



DESCRIPTION:

"LOT 51 OF ROUNTREE'S NORTH EASTERN ADDITION TO THE VILLAGE (NOW CITY) OF PLATTEVILLE, GRANT COUNTY, WISCONSIN, ACCORDING TO THE RECORDED MAP OR PLAT THEREOF."

* NOTE *

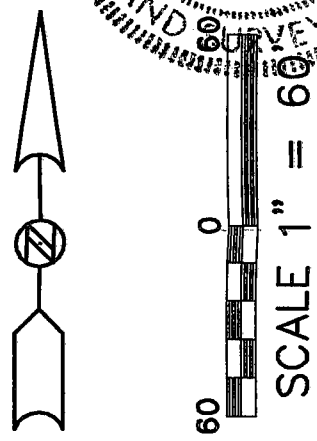
THE PLAT OF "ROUNTREE'S NORTHEAST ADDITION" RECORDED AT THE REGISTER OF DEED'S, OFFICE, LANCASTER, WISCONSIN, DOES NOT SHOW DIMENSIONS FOR LOT 51. THE DIMENSIONS SHOWN HEREON ARE FROM A 1971 DALE DIXON SURVEY, AND RECORDS FROM THE CITY OF PLATTEVILLE.

SURVEYOR'S CERTIFICATE:

I, LARRY L. AUSTIN, REGISTERED WISCONSIN LAND SURVEYOR, DO HEREBY CERTIFY THAT THE ABOVE DESCRIPTION WAS SURVEYED, MAPPED, AND MONUMENTED BY ME OR UNDER MY DIRECT SUPERVISION ALL IN ACCORDANCE WITH THE INSTRUCTIONS OF CLIFFORD WITTE, AND TO THE BEST OF MY KNOWLEDGE AND BELIEF, THIS PLAT IS AN ACCURATE REPRESENTATION THEREOF.

Larry L. Austin
LARRY L. AUSTIN, RLS 1903

12/26/97
DATE



AUSTIN ENGINEERING — LARRY L. AUSTIN 4211 HWY 81 E, LANCASTER, WI 53813 PHONE 608-723-6363 FAX 608-723-6702	
DRAWN BY: SW AUSTIN APPROVED: LL AUSTIN CREW: BS — DK SHEET 1 OF 1	FIELDBOOK: 96-15 C:\SURVEY3\PVILLE\JAYTOPO C:\EPSA\PROGRAM\PVILLE\BLK51CW