

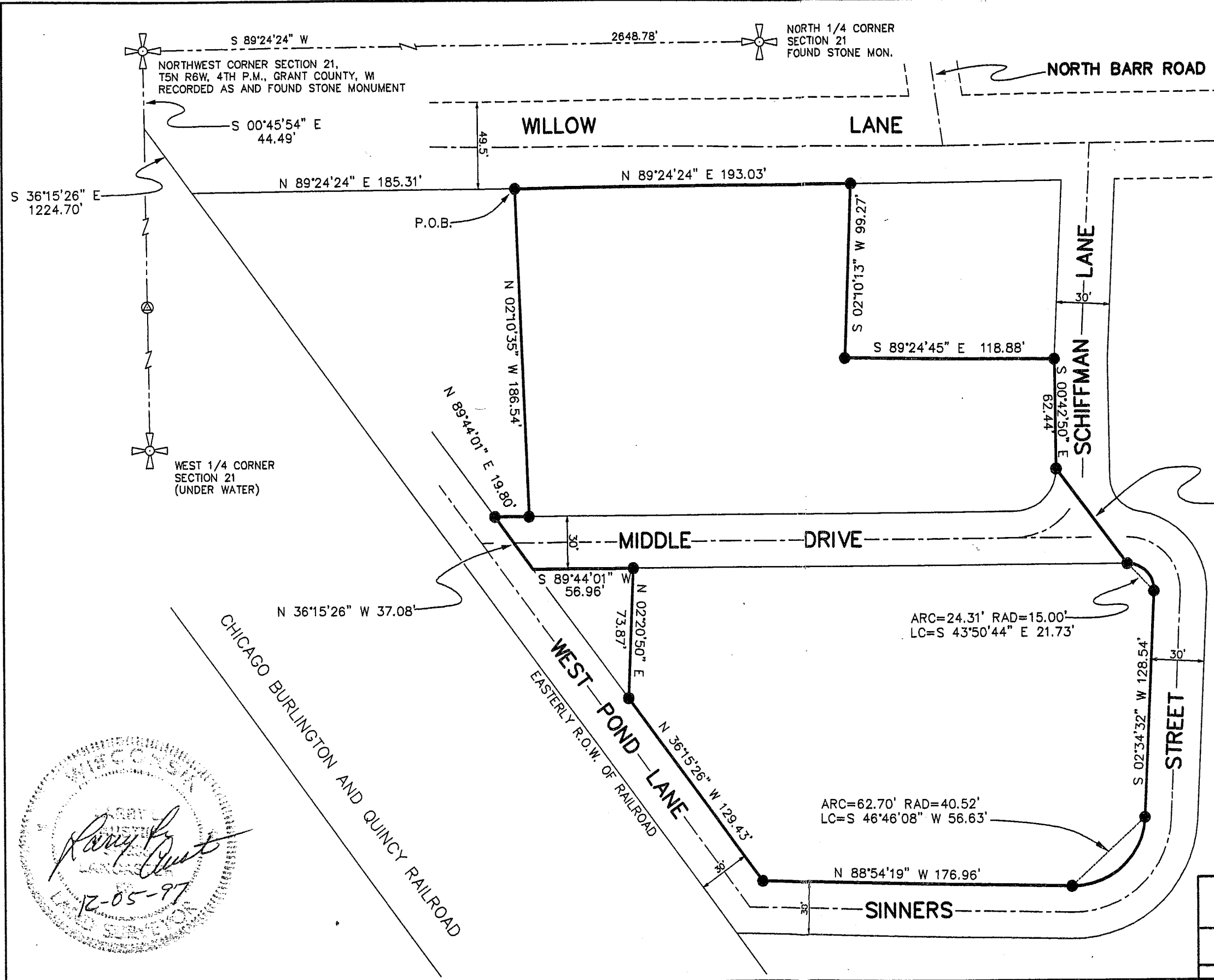
REC'D JAN 2 1998

Sec 21, T5N, R6W

64

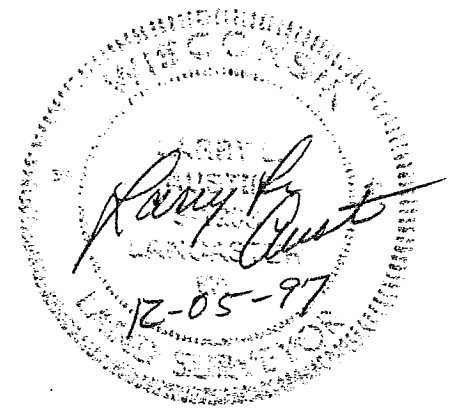
SURVEY PLAT

PREPARED FOR:
DON SCHIFFMAN



LEGEND

- 3/4" X 24" REBAR SET
 - ⊗ 4" X 4" MONUMENT WITH BRASS CAP FOUND
- BEARINGS REFERENCED TO THE NORTH LINE OF SECTION 21 WHICH IS ASSUMED TO BEAR N 89°24'24" E.



AUSTIN ENGINEERING - LARRY L. AUSTIN	
4211 HWY 81 E, LANCASTER, WI 53813	
PHONE 608-723-6363 FAX 608-723-6702	
DRAWN BY: AJ AUSTIN	FIELDBOOK: 9507,9718
APPROVED: LL AUSTIN	C:\SURVEY3\T5NR6W\21
CREW: BS - DK	C:\EPSA\PROGRAM\T5NR6W\21DS2
SHEET 1 OF 2	

SURVEY PLAT

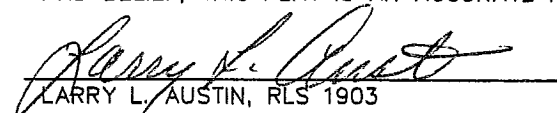
PREPARED FOR:
DON SCHIFFMAN

DESCRIPTION

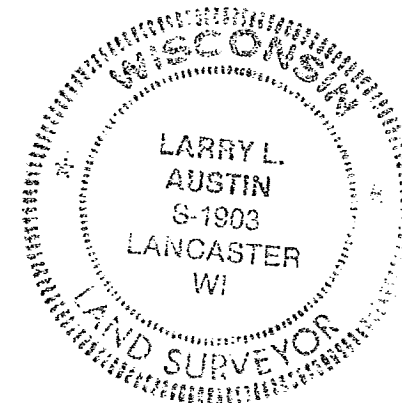
COMMENCING AT THE NORTHWEST CORNER OF SECTION 21, T5N R6W, OF THE 4TH P.M., GRANT COUNTY, WISCONSIN;
THENCE S 00°45'54" E 44.49' TO A POINT ON THE WEST LINE OF SAID SECTION 21;
THENCE S 36°15'26" E 1224.70' TO A POINT ON THE EASTERLY R.O.W. OF THE CHICAGO, BURLINGTON, QUINCY RAILROAD;
THENCE N 89°24'24" E 185.31' ALONG THE SOUTH R.O.W. LINE OF WILLOW LANE TO A 3/4" REBAR MARKING THE POINT OF BEGINNING;
THENCE N 89°24'24" E 193.03' ALONG SAID SOUTH R.O.W. LINE TO A 3/4" REBAR;
THENCE S 02°10'13" W 99.27' TO A 3/4" REBAR;
THENCE S 89°24'45" E 118.88' TO A 3/4" REBAR;
THENCE S 00°42'50" E 62.44' TO A 3/4" REBAR;
THENCE S 36°19'58" E 66.99' TO A 3/4" REBAR;
THENCE SOUTHEASTERLY 24.31' ON THE ARC OF A CURVE CONCAVE SOUTHWESTERLY HAVING A RADIUS OF 15.00' AND A LONG CHORD WHICH BEARS S 43°50'44" E 21.73' TO A 3/4" REBAR;
THENCE S 02°34'32" W 128.54' TO A 3/4" REBAR;
THENCE SOUTHEASTERLY 62.70' ON THE ARC OF A CURVE CONCAVE NORTHWESTERLY HAVING A RADIUS OF 40.52' AND A LONG CHORD WHICH BEARS S 46°46'08" W 56.63' TO A 3/4" REBAR;
THENCE N 88°54'19" W 176.96' TO A 3/4" REBAR;
THENCE N 36°15'26" W 129.43' TO A 3/4" REBAR;
THENCE N 02°20'50" E 73.87' TO A 3/4" REBAR;
THENCE S 89°44'01" W 56.96' TO A 3/4" REBAR;
THENCE N 36°15'26" W 37.08' TO A 3/4" REBAR;
THENCE N 89°44'01" E 19.80' TO A 3/4" REBAR;
THENCE N 02°10'35" W 186.54' TO THE POINT OF BEGINNING, EXCEPTING THE FOLLOWING STREETS: MIDDLE DRIVE, SINNERS STREET, AND SCHIFFMAN LANE, AND BEING SUBJECT TO ANY AND ALL EASEMENTS OF RECORD AND/OR USAGE.

SURVEYOR'S CERTIFICATE:

I, LARRY L. AUSTIN, REGISTERED WISCONSIN LAND SURVEYOR, DO HEREBY CERTIFY THAT THE ABOVE DESCRIPTION WAS SURVEYED, MAPPED, AND MONUMENTED BY ME OR UNDER MY DIRECT SUPERVISION ALL IN ACCORDANCE WITH THE INSTRUCTIONS OF DON SCHIFFMAN, AND TO THE BEST OF MY KNOWLEDGE AND BELIEF, THIS PLAT IS AN ACCURATE REPRESENTATION THEREOF.


LARRY L. AUSTIN, RLS 1903

12/05/97
DATE



AUSTIN ENGINEERING - LARRY L. AUSTIN
4211 HWY 81 E, LANCASTER, WI 53813
PHONE 608-723-6363 FAX 608-723-6702

DRAWN BY: AJ AUSTIN
APPROVED: LL AUSTIN
CREW: BS - DK
SHEET 2 OF 2

FIELDBOOK: 9507.9718
C:\SURVEY3\T5NR6W\21
C:\EPSA\PROGRAM\T5NR6W\21DS2