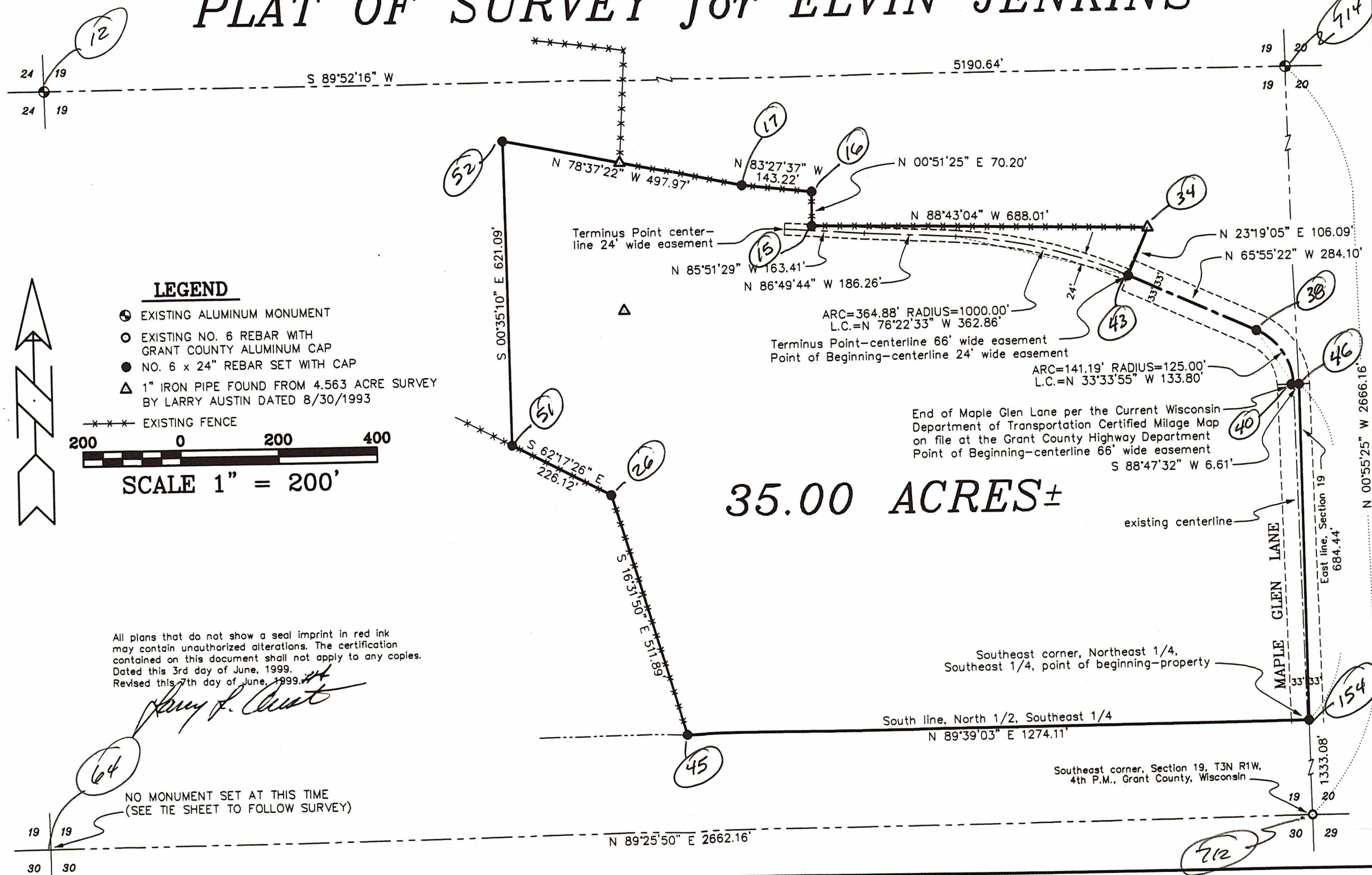


NF 449

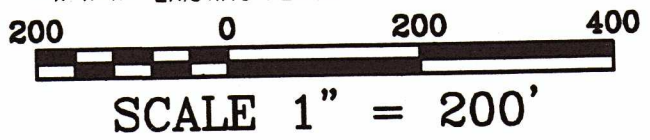
# PLAT OF SURVEY for ELVIN JENKINS

SHEET 1 OF 2



### LEGEND

- EXISTING ALUMINUM MONUMENT
- EXISTING NO. 6 REBAR WITH GRANT COUNTY ALUMINUM CAP
- NO. 6 x 24" REBAR SET WITH CAP
- △ 1" IRON PIPE FOUND FROM 4.563 ACRE SURVEY BY LARRY AUSTIN DATED 8/30/1993
- \*\*\* EXISTING FENCE



## 35.00 ACRES ±

All plans that do not show a seal imprint in red ink may contain unauthorized alterations. The certification contained on this document shall not apply to any copies. Dated this 3rd day of June, 1999. Revised this 7th day of June, 1999.

*Larry J. Austin*

NO MONUMENT SET AT THIS TIME  
(SEE TIE SHEET TO FOLLOW SURVEY)

DRAWN BY: AJ AUSTIN  
APPROVED: LL AUSTIN  
CREW: BS - SB

FIELDBOOK: 9906  
G: \T3NR1W\19  
C: \E\PSA\PROGRAM\T3NR1W\19EJ

**AUSTIN ENGINEERING, LLC**  
4211 HWY 81 E, LANCASTER, WI 53813  
PHONE 608-723-6363 FAX 608-723-6702

NF449

Program: SURVEY 3.03  
Filename: C:\SURVEY3\T3NR1W\19

06-03-1999

2:57 PM

Page 1

Job: JENKINS  
FB: SDR33, 99\_\_

By: AUSTIN ENGINEERING, LLC

Point	Quad	Direction	Distance	Northing	Easting	Elevation
-------	------	-----------	----------	----------	---------	-----------

SECTION LINE INVERSES

Start						
64	s 1/4	of section 19		473784.5737	866318.0254	701.060
IN	NE	89 25 50.122	2662.15605			-701.060
712	NW	COR SECTION 29		*473811.0300	868980.0500	0.000
IN	NW	0 55 25.253	1333.07823			0.000
154	tr	40 cor		475143.9350	868958.5600	0.000
IN	NW	0 55 25.253	1333.07822			0.000
714	PLUS			476476.8400	868937.0700*	0.000
IN	SE	0 55 25.253	2666.15645			0.000
712	NW	COR SECTION 29		*473811.0300	868980.0500	0.000
IN	NW	0 55 25.253	2666.15645			0.000
714	PLUS			476476.8400	868937.0700*	0.000
IN	SW	89 52 16.219	5190.64012			734.760
12	ALUM	MON		476465.1690	863746.4430	734.760
IN	NE	89 52 16.219	5190.64012			-734.760
714	PLUS			476476.8400	868937.0700*	0.000
IN	SE	0 55 25.253	1333.07822			0.000
154	tr	40 cor		475143.9350	868958.5600*	0.000
IN	SW	89 39 03.170	1400.00000			0.000
155	tr	pt		475135.4045	867558.5860	0.000

NF449

Program: SURVEY 3.03  
 Filename: C:\SURVEY3\T3NR1W\19

06-03-1999

10:08 AM

Page 1

Job: JENKINS  
 FB: SDR33, 99\_\_

By: AUSTIN ENGINEERING, LLC

Point	Quad	Direction	Distance	Northing	Easting	Elevation
-------	------	-----------	----------	----------	---------	-----------

-----  
 INVERSES FOR JENKINS PROPERTY

Start						
712	NW COR SECTION 29			473811.0300	868980.0500 *	0.000
IN	NW 0' 55' 25.253	1333.07823				0.000
154	tr 40 cor			475143.9350	868958.5600 *	0.000
Start						
154	tr 40 cor			475143.9350	868958.5600 *	0.000
IN	NW 0' 55' 25.253	684.44169				0.000
46	b cor prop			475828.2877	868947.5264 ✓	0.000
IN	SW 88' 47' 31.596	6.60567				0.000
40	PT+END MAPLE GLEN LN	0.63 MI		475828.1485	868940.9222 ✓	0.000
IC						
39	Center point of arc			475825.5135	868815.9500	0.000
	Central Angle	64 42 54.228				
	Radius	124.99998				
	Arc	141.18634				
	Tangent	79.19749				
	Chord	133.80019				0.000
	Bearing	NW 33 33 55.476				
38	PC			475939.6382	868866.9456	0.000
IN	NW 65' 55' 22.480	284.10399				0.000
43	PT			476055.5428	868607.5594	0.000
IN	NE 23' 19' 05.028	106.08776				837.110
34	1" IPF FNC COR			476152.9655	868649.5527	837.110
IN	NW 88' 43' 04.072	688.01293				-837.110
15	FNC COR NLS			476168.3610	867961.7120	0.000
IN	NE 0' 51' 25.059	70.20485				0.000
16	FNC COR NLS			476238.5580	867962.7620	0.000
IN	NW 83' 27' 36.926	143.22294				0.000
17	FNC COR NLS			476254.8700	867820.4710	0.000
IN	NW 78' 37' 21.842	497.96727				0.000
52	bb pt			476353.1032	867332.2890	0.000
IN	SE 0' 35' 09.747	621.08797				0.000
51	tr pt			475732.0477	867338.6416	0.000
IN	SE 62' 17' 26.047	226.11716				0.000
26	FNC COR NLS			475626.9060	867538.8270	0.000
IN	SE 16' 31' 49.881	511.89183				0.000
45	bb pt			475136.1715	867684.4736	0.000
IN	NE 89' 39' 03.169	1274.11007				0.000
154	tr 40 cor			475143.9350	868958.5600	0.000