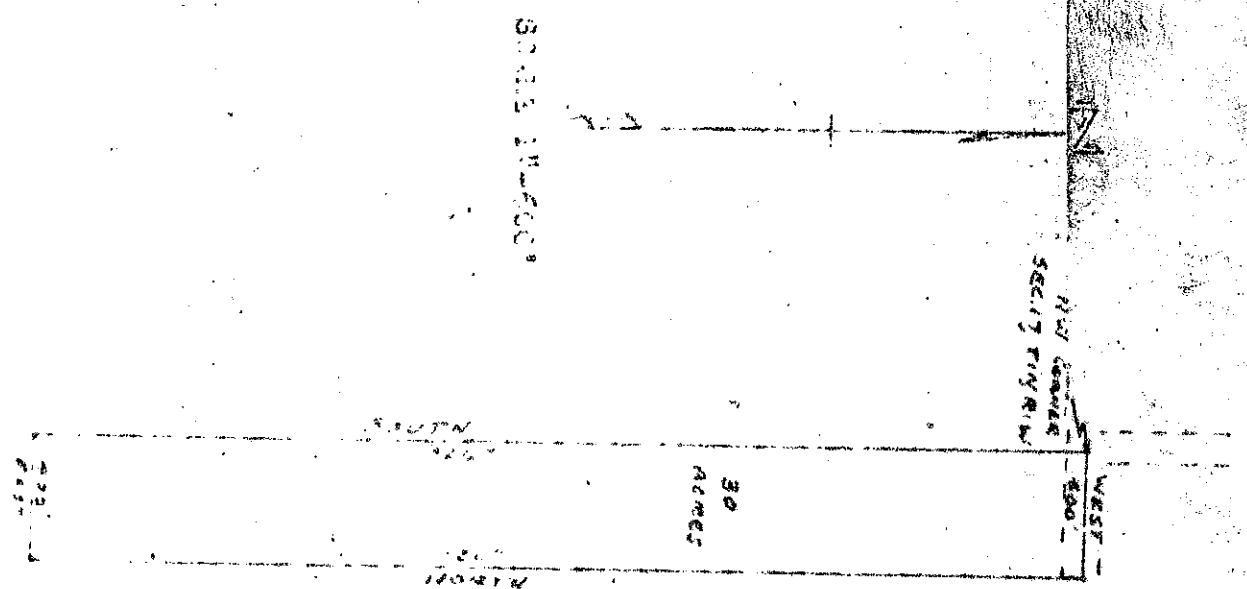


APPROXIMATE PROPERTY
LINES AND BOUNDARIES
DATE 1982

DISSEMINATED BY THE U.S. GEOLOGICAL SURVEY
COMMERCIAL AND PROFESSIONAL USE IS PROHIBITED
SECTION 17, T1N, R1W, 4th P.M., Grant County,
Wisconsin; thence South, 3257.00 ft., along the section line; thence East,
400.00 ft.; thence North, 3267.00 ft., to the north line of said section;
thence West, ACC. CC ft., along said north line to the point of beginning;
containing 30.00 acres more or less.



RECEIVED

NF402

By Land Information Office at 4:16 pm, Sep 01, 2020

FILE