

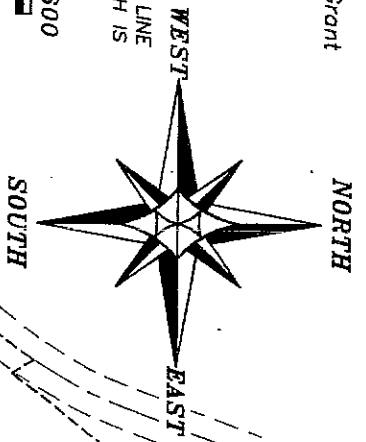
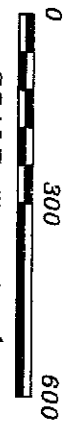
NF-269

EASEMENT DETAIL

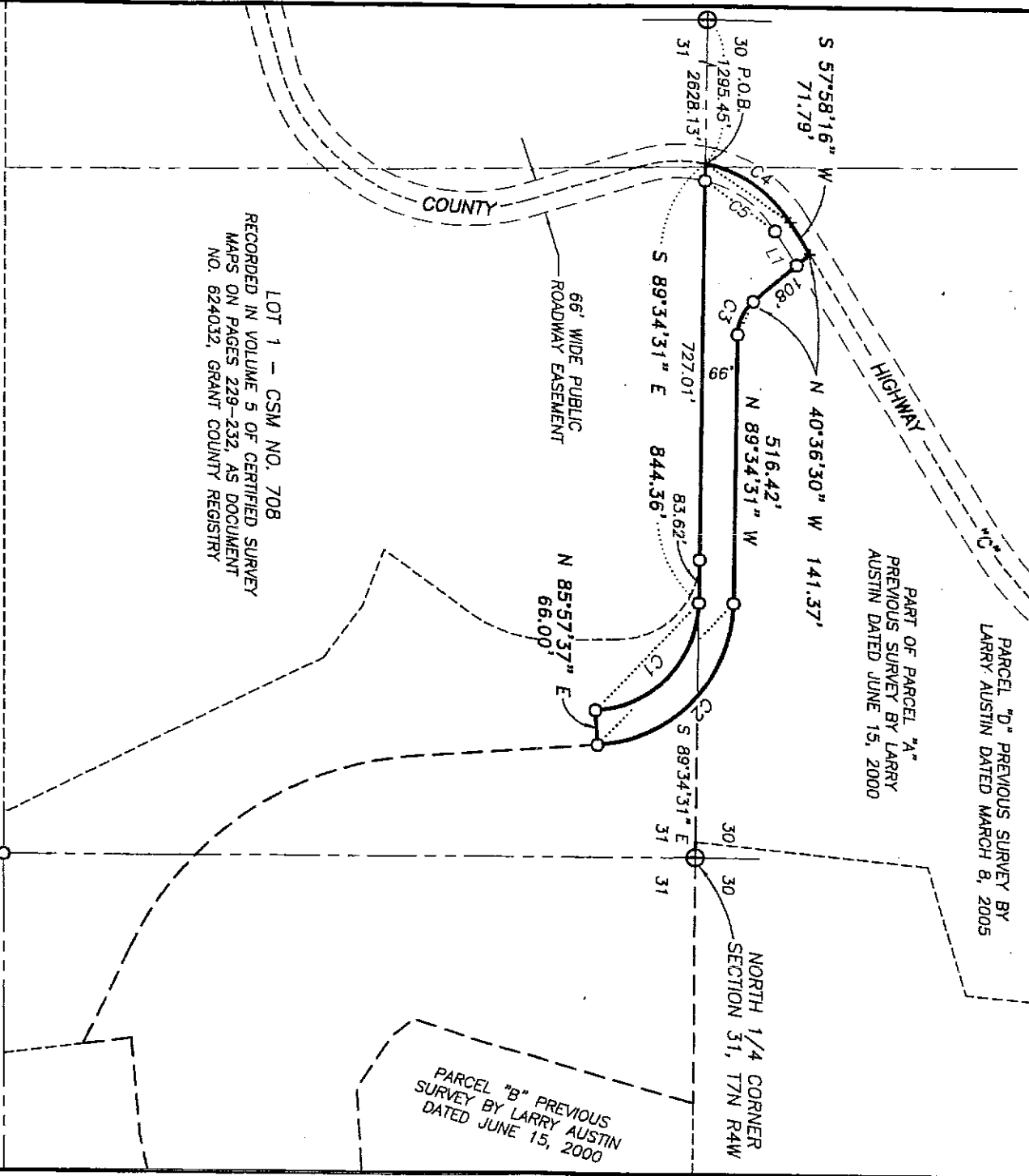
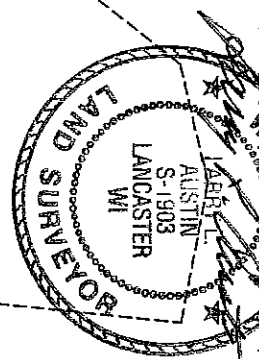
LEGEND

- ⊗ No. 6 rebar found with Grant County Aluminum Cap
- ⊕ No. 8 rebar found with Grant County Aluminum Cap
- No. 6 rebar found
- + No monument set

BEARINGS REFERENCED TO THE NORTH LINE OF THE NW 1/4 OF SECTION 31 WHICH IS ASSUMED TO BEAR S 89°34'31" E.



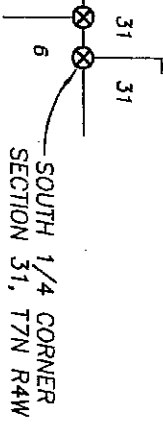
All plans that do not show a seal imprint in red ink may contain unauthorized alterations. The certification contained in this document shall not apply to any copies made on or after January 9, 2005.



LOT 1 - CSM NO. 708
 RECORDED IN VOLUME 5 OF CERTIFIED SURVEY MAPS ON PAGES 229-232, AS DOCUMENT NO. 624032, GRANT COUNTY REGISTRY

LINE	BEARING	DISTANCE
L1	S 57°58'16" W	76.77'

CURVE	RADIUS	ARC LENGTH	CHORD BEARING	CHORD LENGTH
C1	210.10'	313.61'	S 46°48'05" E	285.29'
C2	276.10'	412.12'	N 46°48'05" W	374.91'
C3	84.00'	71.79'	N 65°05'30" W	69.62'
C4	250.00'	202.81'	S 34°43'52" W	197.29'
C5	217.00'	169.56'	S 35°35'09" W	165.28'



Austin Engineering Inc

4211 HWY B1 E, LANCASTER, WI 53813
 PHONE 608-723-6363 FAX 608-723-6702

Prepared For: CLIFF WACHTER

JOB NO: 05S019
 FIELDBOOK: TDSR
 G:\T7NR4W\32A
 H:\PLAT\T7NR4W\31\05S019-WACHTER-H

DRAWN BY: SW AUSTIN
 APPROVED: LL AUSTIN
 CREW: BS-SA-BD-SB
 SHEET 2 OF 3