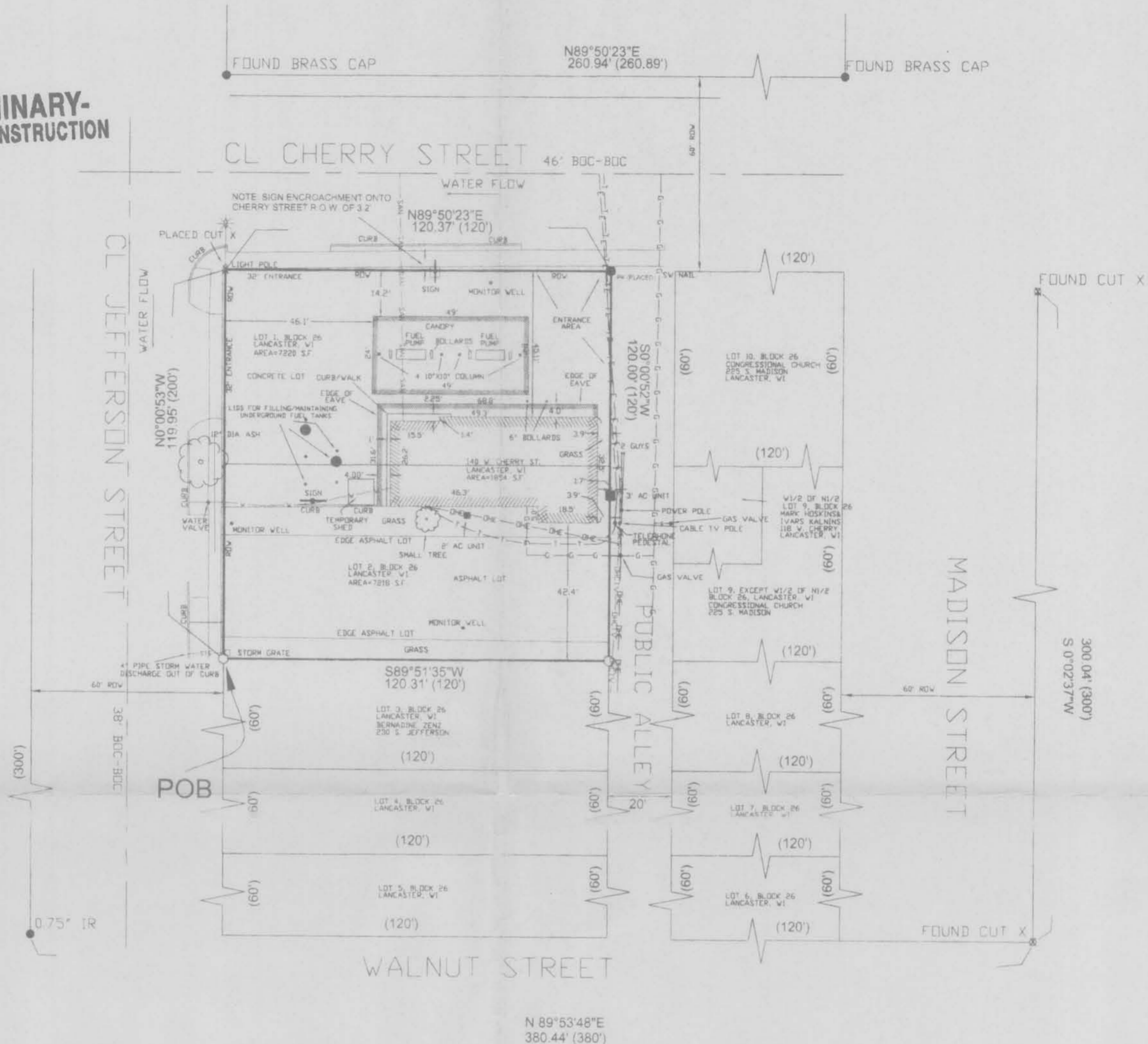


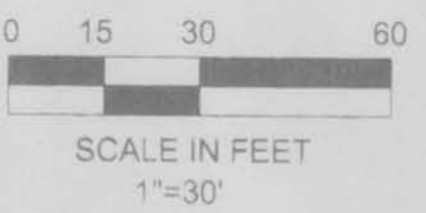
ALTA/ACSM LAND TITLE SURVEY

OF LOT 1 AND LOT 2 OF BLOCK 26 OF ORIGINAL PLAT OF LANCASTER, WI

**PRELIMINARY-
NOT FOR CONSTRUCTION**

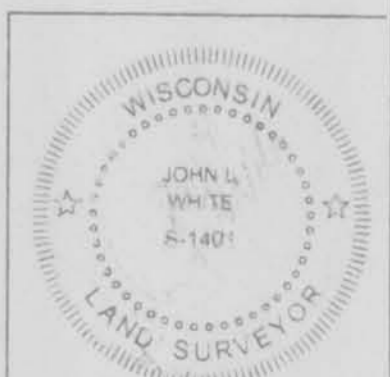


- LEGEND**
- IP IRON PIPE (FOUND) - SIZE AS INDICATED
 - IR IRON ROD (FOUND) - SIZE AS INDICATED
 - 3/4" X 30" IRON ROD (PLACED)
 - PK PK NAIL (PLACED)
 - X X-MARK IN CONCRETE.
 - RECORD PROPERTY LINE
 - SURVEYED PROP. LINE
 - - - - OVERHEAD POWER LINE
 - CENTER LINE CL
 - - - - R.O.W. (RIGHT OF WAY)
 - - - - BURIED ELECTRIC LINE
 - - - - NATURAL GAS
 - - - - WATER MAIN
 - - - - OVERHEAD CABLE TV LINE
 - - - - BURIED TELEPHONE
 - BOC BACK OF CURB
 - BOC-BOC BACK OF CURB TO BACK OF CURB
 - () RECORDED DIMENSION
 - P.O.B POINT OF BEGINNING
 - R.O.W. RIGHT OF WAY
 - MW MONITORING WELL
 - AC AIR CONDITIONER
 - MH MAN HOLE



NOTES

- (1) ALL MEASUREMENTS ARE IN FEET AND DECIMALS THEREOF.
- (2) OWNERS : IOWA OIL COMPANY (IOCO)
- (3) DATE OF FIELD SURVEY: NOV. 7, 2000.
- (4) TOTAL SURVEYED AREA: 14438 SQ.FT.
- (5) ZONING IS C2 COMMERCIAL FOR LOTS 1-2
- (6) 0' SETBACK RESTRICTION.
- (7) 35' HEIGHT RESTRICTION FOR BUILDINGS
- (8) ALL UTILITIES TAKEN BY GROUND SHOTS LOCATED BY DIGGERS HOTLINE LOCATE # 6799618
- (9) BEARINGS BASED UPON NORTH R.O.W. LINE OF CHERRY STREET, BLOCK 26, @ N 89°50'23"E
- (10) BUILDING HEIGHT= 14.5'



DWG #00227-01	SHEET TITLE		PROJECT	NO. 00227	BUESING & ASSOCIATES CONSULTING ENGINEERS 1212 LOCUST STREET DUBUQUE, IOWA 52001 (319) 556-4389	DATE	REVISIONS	DRAWN BY:
1 2	ALTA/ACSM LAND TITLE SURVEY IOCO @ LANCASTER, WI		SURVEY REQUESTED BY: IOWA OIL COMPANY C.O JOHN NOEL IOCO 208C SOUTH PARK CT DUBUQUE IA 52003 (319) 583-3563			NOV. 28, 2000		TMP
						SCALE		CHECKED BY:
						1"=30'		JLW