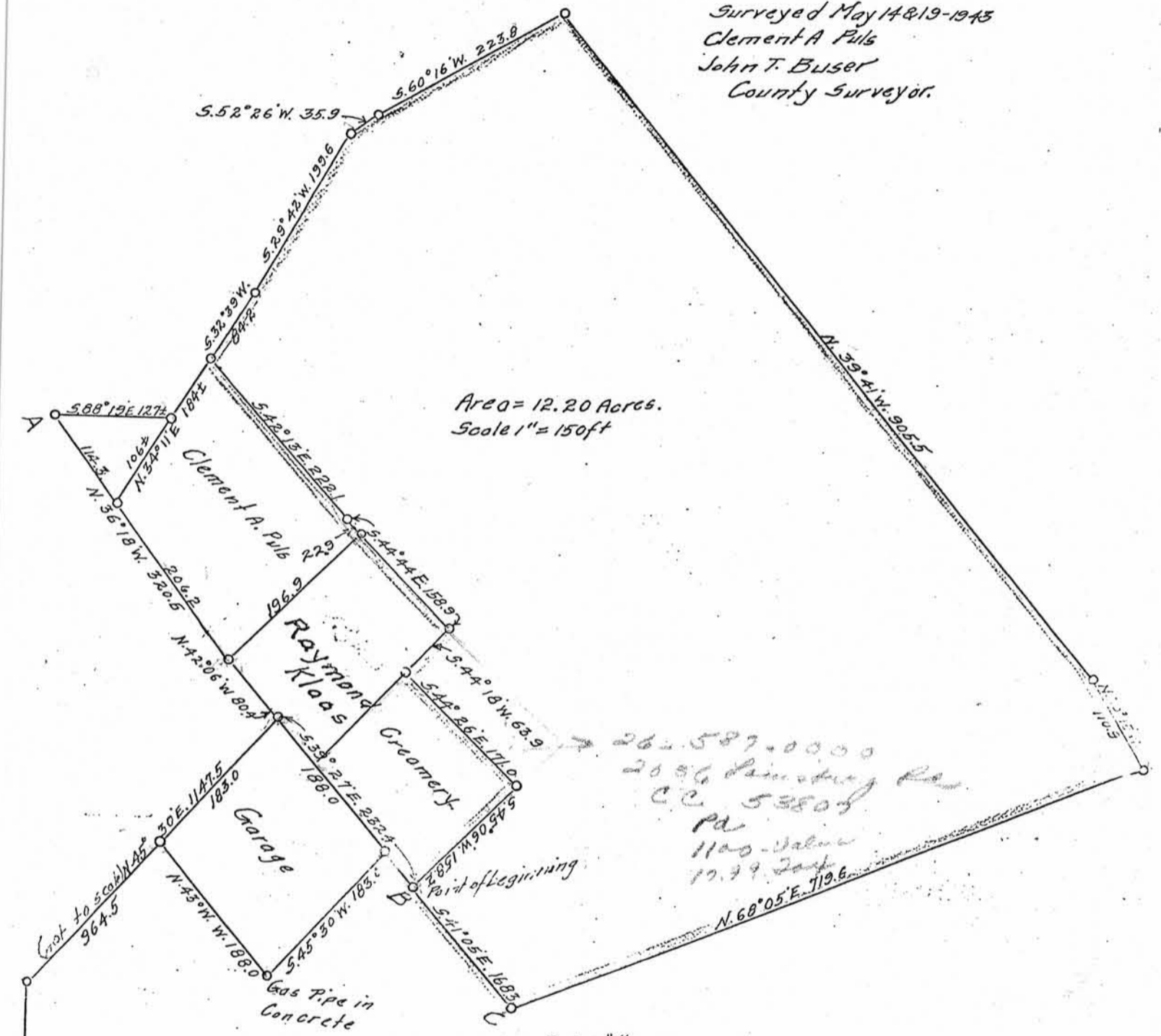


Surveyed May 14 & 19-1943  
 Clement A Pils  
 John T. Buser  
 County Surveyor.

Area = 12.20 Acres.  
 Scale 1" = 150ft



(not to scale)  
 North 787.0  
 S.W. Cor. of S.E. 1/4  
 of N.W. 1/4 of Sec 12  
 T. 1 N. R. 2 W.

Point "A" is located at the middle of the Bridge  
 across Menominee Creek.  
 Point "B" is located on a small Bridge.  
 Points A, B, and C, and points in between are  
 along the center line of the Dickeyville -  
 Hazel Green highway.

The land surveyed is shown bordered by Red.