

Village of Montfort  
RUNDLE SURVEY

JULY 11, 1983

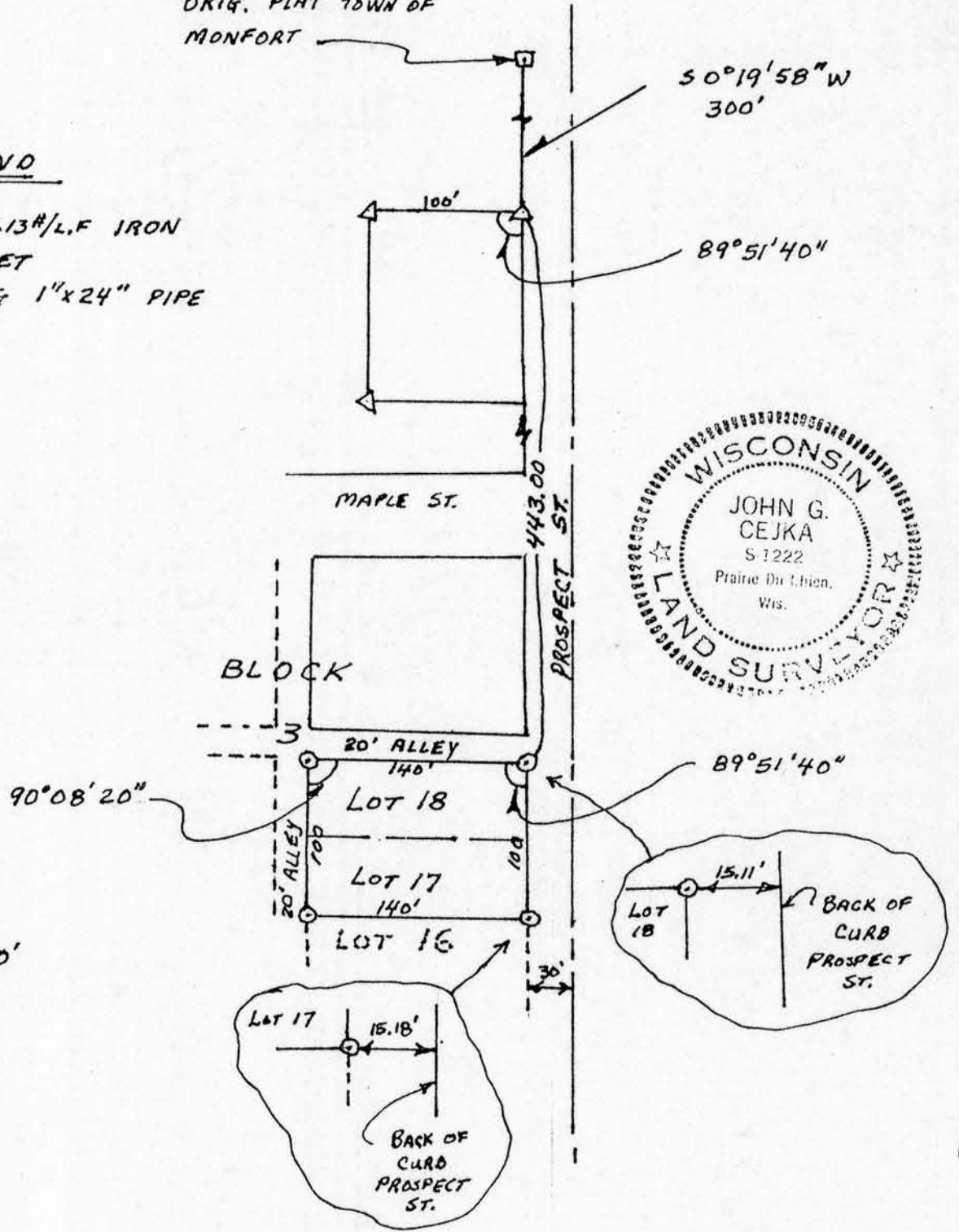
STONE MONUMENT-  
NE CORNER LOT 19  
ORIG. PLAT TOWN OF  
MONFORT

LEGEND

- ⊙ 1"x24", 1.13# L.F IRON PIPE SET
- △ EXISTING 1"x24" PIPE



SCALE  
1" = 100'



I, JOHN G. CEJKA, REGISTERED LAND SURVEYOR, HEREBY CERTIFY THAT THIS IS A TRUE AND CORRECT PLAT OF LOT 17 AND 18, BLOCK 3 OF THE DIETER & EASTMAN ADDITION IN THE VILLAGE OF MONFORT, GRANT COUNTY, WISCONSIN

*John G. Cejka*  
JOHN G. CEJKA R.L.S. 1222