

SURVEY LEGEND

- Sanitary Sewer Line
Approximate Sanitary Sewer Line Per Maps From Others
Storm Sewer Line
Approximate Storm Sewer Line Per Maps From Others
Overhead Utilities Line
Buried Electric Line
Buried Gas Line
Approximate Buried Gas Line Per Maps From Others
Buried Telephone Line
Buried Water Line
Approximate Buried Water Line Per Maps From Others
Buried Fiber Optics Line
Approximate Buried Fiber Optics Line Per Maps From Others
Chain Link Fence Line (Unless Noted Otherwise)
Edge of Bituminous Contour Line
Right-of-Way Center Line
Section Line
Interior Lot Line
Easement Line
Match Line
F.F.E. = Finished Floor Elevation
Rectangular Catch Basin
Circular Catch Basin
Square Catch Basin
Storm Sewer Manhole
Sanitary Sewer Manhole
Grease Interceptor
Water Service
Water Valve
Hydrant
Electric Meter
Electric Transformer
Electric Outlet
Electric Box
Light Pole
Power Pole
Flood Light
Guy Wire
Gas Meter
Gas Valve
Telephone Pedestal
Fiber Optic Vault
Guard Post/Bollard
Wooden Post
Metal Post
Clean Out
Control Box
Air Conditioning Unit
Dust Collector
Sign
Flagpole
Roof Drain
Basketball Hoop
Play Equipment
Foul Pole
Field Goal Post
Little Free Library
Bush/Shrub
Tree
Pine Tree
Orchard Area
Rip Rap Area
Infield Material
Landscape Area
Sand Area
Wood Chip Area
3/4" O.D. x 1/8" Iron Bar Set Weighing 1.50 LBS/LIN. FT.
1" O.D. Iron Pipe Found
2" O.D. Iron Pipe Found
3/4" O.D. Iron Bar Found
1" O.D. Iron Bar With Aluminum Cap Found
Mag Nail Set
Mag Nail Found
Recorded As

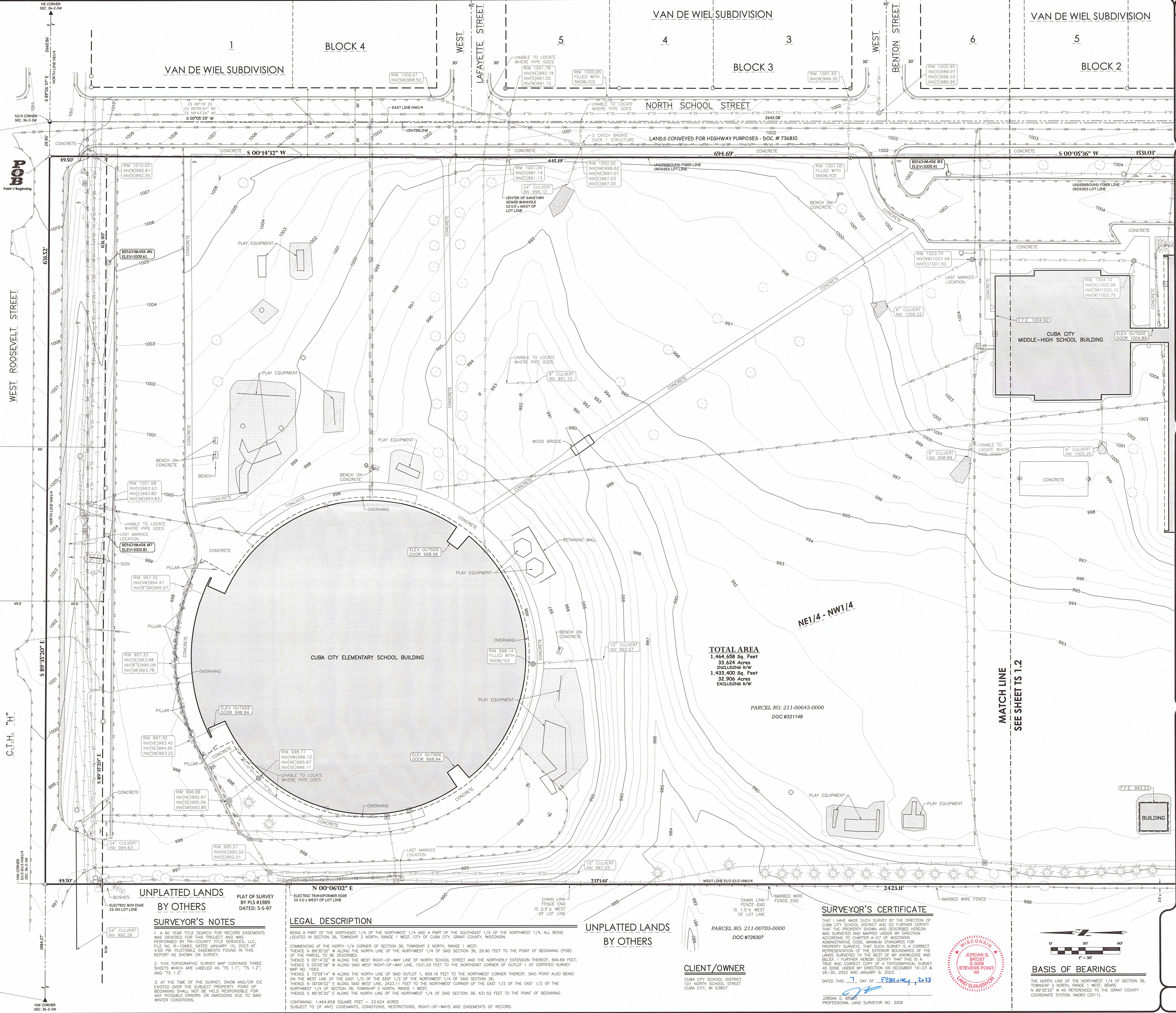
BENCH MARK

- Elevations are referenced to NAVD 88 DATUM.
BENCH MARK #1: BURY BOLT ON HYDRANT, LOCATED AT THE SOUTHWEST CORNER OF THE INTERSECTION OF SOUTH SCHOOL STREET AND WEST WEBSTER STREET. ELEVATION = 1008.42
BENCH MARK #2: BURY BOLT ON HYDRANT, LOCATED AT THE WEST SIDE OF THE INTERSECTION OF NORTH SCHOOL STREET AND WEST CLAY STREET. ELEVATION = 1004.51
BENCH MARK #3: CHISELED SQUARE ON EAST SIDE OF LIGHT POLE BASE, LOCATED AT THE WEST SIDE OF THE INTERSECTION OF NORTH SCHOOL STREET AND WEST BENTON STREET. ELEVATION = 1005.41
BENCH MARK #4: BURY BOLT ON HYDRANT, LOCATED AT THE NORTHEAST CORNER OF THE INTERSECTION OF SOUTH SCHOOL STREET AND BELKEN COURT. ELEVATION = 980.86
BENCH MARK #5: CHISELED SQUARE ON WEST SIDE OF LIGHT POLE BASE, LOCATED APPROXIMATELY 155 FEET SOUTH OF THE SOUTH SIDE OF THE CUBA CITY MIDDLE/HIGH SCHOOL BUILDING. ELEVATION = 1002.78
BENCH MARK #6: SOUTH-SIDE BOLT ON LIGHT POLE BASE, LOCATED ON THE SOUTH SIDE OF WEST ROOSEVELT STREET, APPROXIMATELY 125 FEET WEST OF THE INTERSECTION OF WEST ROOSEVELT STREET AND NORTH SCHOOL STREET. ELEVATION = 1009.61
BENCH MARK #7: BURY BOLT ON HYDRANT, LOCATED ON THE SOUTH SIDE OF WEST ROOSEVELT STREET, APPROXIMATELY 330 FEET WEST OF THE INTERSECTION OF WEST ROOSEVELT STREET AND NORTH SCHOOL STREET. ELEVATION = 1002.81

UTILITY DISCLAIMER

The locations of all shown ground utilities and appurtenances, visible or otherwise, were determined by visual inspection, and are not guaranteed to be accurate. The locations of all underground utilities and appurtenances, visible or otherwise, were determined by visual inspection, and are not guaranteed to be accurate. The locations of all underground utilities and appurtenances, visible or otherwise, were determined by visual inspection, and are not guaranteed to be accurate.

POINT OF BEGINNING, INC. HOLDS THE RIGHTS TO COPYRIGHT IN AND TO THESE SURVEY MAPS. ANY REPRODUCTION, COPYING, ALTERATION, MODIFICATION, LAMING, INCORPORATION INTO OTHER DOCUMENTS OR ASSIGNMENT OF THE SAME WITHOUT THE PRIOR WRITTEN PERMISSION OF POINT OF BEGINNING, INC.



TOTAL AREA
1,464,658 Sq. Feet
33.624 Acres
INCLUDING R/W
1,438,400 Sq. Feet
32.906 Acres
EXCLUDING R/W

PARCEL NO. 211-00645-0000
DOC #331148

PARCEL NO. 211-00705-0000
DOC #726307

SURVEYOR'S NOTES
1. A 60 YEAR TITLE SEARCH FOR RECORD EASEMENTS WAS OBTAINED FOR THIS PROJECT AND WAS PERFORMED BY TIT-COUNTY TITLE SERVICES, LLC, FILE NO. R-10683, DATED JANUARY 10, 2023 AT 4:00 PM. FOLIABLE EASEMENTS FOUND IN THIS REPORT AS SHOWN ON SURVEY.
2. THIS TOPOGRAPHIC SURVEY MAP CONTAINS THREE SHEETS WHICH ARE LABELED AS "TS 1.1", "TS 1.2", AND "TS 1.3".
3. AT THE TIME OF THE SURVEY, SNOW AND/OR ICE EXISTED OVER THE SUBJECT PROPERTY. POINT OF BEGINNING SHALL NOT BE HELD RESPONSIBLE FOR ANY POSSIBLE ERRORS OR OMISSIONS DUE TO SAID WINTER CONDITIONS.
CONTAINING: 1,464,658 SQUARE FEET = 33.624 ACRES
SUBJECT TO (IF ANY) COVENANTS, CONDITIONS, RESTRICTIONS, RIGHT-OF-WAYS AND EASEMENTS OF RECORD.

LEGAL DESCRIPTION
BEING A PART OF THE NORTHEAST 1/4 OF THE NORTHWEST 1/4 AND A PART OF THE SOUTHWEST 1/4 OF THE NORTHWEST 1/4, ALL BEING LOCATED IN SECTION 36, TOWNSHIP 2 NORTH, RANGE 1 WEST, CITY OF CUBA CITY, GRANT COUNTY, WISCONSIN.
COMMENCING AT THE NORTH 1/4 CORNER OF SECTION 36, TOWNSHIP 2 NORTH, RANGE 1 WEST;
THENCE N 89°35'20" W ALONG THE NORTH LINE OF THE NORTHWEST 1/4 OF SAID SECTION 36, 29.90 FEET TO THE POINT OF BEGINNING (POB) OF THE PARCEL TO BE DESCRIBED;
THENCE S 0°14'32" W ALONG THE WEST RIGHT-OF-WAY LINE OF NORTH SCHOOL STREET AND THE NORTHERLY EXTENSION THEREOF, 694.69 FEET;
THENCE S 0°05'36" W ALONG SAID WEST RIGHT-OF-WAY LINE, 1531.03 FEET TO THE NORTHEAST CORNER OF CULVERT 1 OF CERTIFIED SURVEY MAP NO. 1592;
THENCE S 72°59'14" W ALONG THE NORTH LINE OF SAID CULVERT 1, 659.16 FEET TO THE NORTHWEST CORNER THEREOF; SAID POINT ALSO BEING ON THE WEST LINE OF THE EAST 1/2 OF THE EAST 1/2 OF SAID SECTION 36;
THENCE N 0°06'02" E ALONG SAID WEST LINE, 2423.11 FEET TO THE NORTHWEST CORNER OF THE EAST 1/2 OF THE EAST 1/2 OF THE NORTHWEST 1/4 OF SECTION 36, TOWNSHIP 2 NORTH, RANGE 1 WEST;
THENCE S 89°35'20" E ALONG THE NORTH LINE OF THE NORTHWEST 1/4 OF SAID SECTION 36, 631.52 FEET TO THE POINT OF BEGINNING.
CONTAINING: 1,464,658 SQUARE FEET = 33.624 ACRES
SUBJECT TO (IF ANY) COVENANTS, CONDITIONS, RESTRICTIONS, RIGHT-OF-WAYS AND EASEMENTS OF RECORD.

SURVEYOR'S CERTIFICATE
THAT I HAVE MADE SUCH SURVEY BY THE DIRECTION OF CUBA CITY SCHOOL DISTRICT AND DO FURTHER CERTIFY THAT THE PROPERTY SHOWN AND DESCRIBED HEREON WAS SURVEYED AND MAPPED UNDER MY DIRECTION ACCORDING TO CHAPTER A-67 OF WISCONSIN ADMINISTRATIVE CODE, MINIMUM STANDARDS FOR PROPERTY SURVEYS. THAT SUCH SURVEY IS A CORRECT REPRESENTATION OF THE EXTERIOR BOUNDARIES OF THE LANDS SURVEYED TO THE BEST OF MY KNOWLEDGE AND BELIEF. I FURTHER HEREBY CERTIFY THAT THIS IS A TRUE AND CORRECT COPY OF A TOPOGRAPHICAL SURVEY AS DONE UNDER MY DIRECTION ON DECEMBER 19-23 & 26-30, 2022 AND JANUARY 9, 2023.
DATED THIS 7 DAY OF FEBRUARY, 2023
JORDAN G. BROST
STEVENS POINT WI
LAND SURVEYOR
PROFESSIONAL LAND SURVEYOR NO. 3009

BASIS OF BEARINGS
THE NORTH LINE OF THE NORTHWEST 1/4 OF SECTION 36, TOWNSHIP 2 NORTH, RANGE 1 WEST, BEARS N 89°35'20" W AS REFERENCED TO THE GRANT COUNTY COORDINATE SYSTEM, NAD83 (2011).

REVISIONS
CHECKED: JORDAN G. BROST
DRAWN: CRAD A. GORETSKI
DATE: 2-7-23
PROJECT NO.: 22-483

TOPOGRAPHIC SURVEY

**CUBA CITY SCHOOL DISTRICT
CUBA CITY SCHOOLS
CITY OF CUBA CITY
GRANT COUNTY, WISCONSIN**

Civil Engineering
Land Surveying
Landscape Architecture
4941 Kirschling Court
Stevens Point, WI 54481
715.344.9999 (PH) 715.344.9922 (FX)

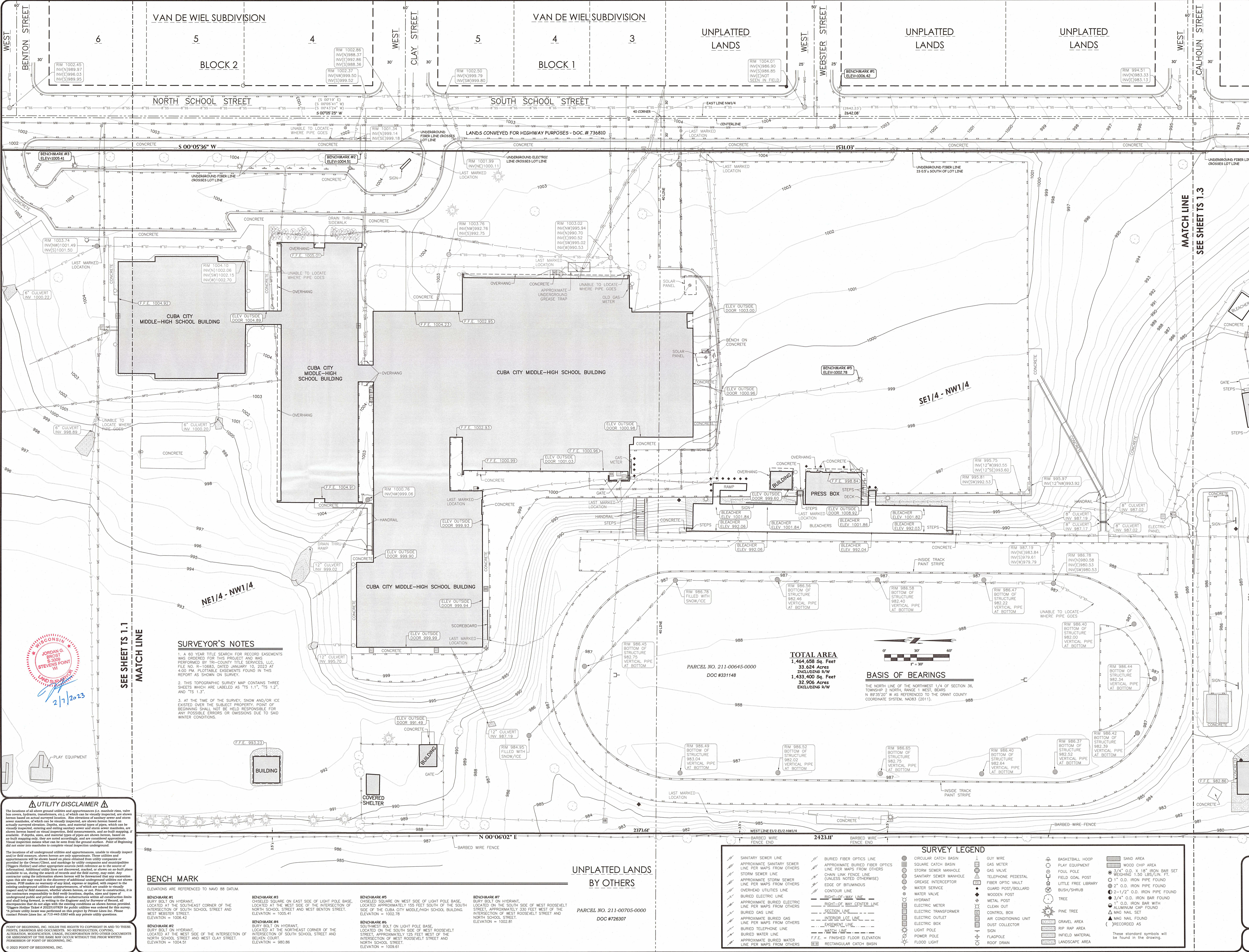
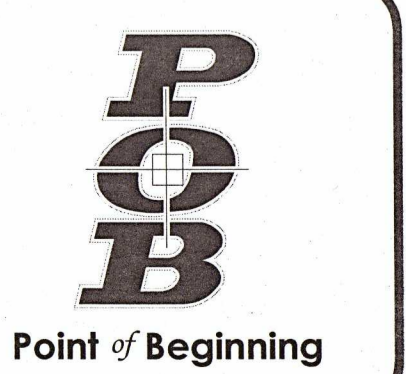
POB
Point of Beginning
TS 1.1
49094
FEB 13 2023

TOPOGRAPHIC SURVEY

CUBA CITY SCHOOL DISTRICT
 CUBA CITY SCHOOLS
 CITY OF CUBA CITY
 GRANT COUNTY, WISCONSIN

Civil Engineering
 Land Surveying
 Landscape Architecture

4941 Kirschling Court
 Stevens Point, WI 54481
 715.344.9999 (PH) 715.344.9922 (FX)



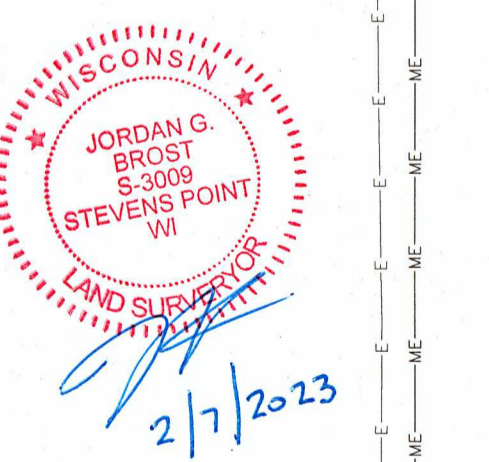
SEE SHEETS 1.1
 MATCH LINE

SURVEYOR'S NOTES

1. A 60 YEAR TITLE SEARCH FOR RECORD EASEMENTS WAS ORDERED FOR THIS PROJECT AND WAS PERFORMED BY TR-COUNTY TITLE SERVICES, LLC. FILE NO. R-10683, DATED JANUARY 10, 2023 AT 4:00 PM. PLOTTABLE EASEMENTS FOUND IN THIS REPORT AS SHOWN ON SURVEY.
2. THIS TOPOGRAPHIC SURVEY MAP CONTAINS THREE SHEETS WHICH ARE LABELED AS "TS 1.1", "TS 1.2", AND "TS 1.3".
3. AT THE TIME OF THE SURVEY, SNOW AND/OR ICE EXISTED OVER THE SUBJECT PROPERTY. POINT OF BEGINNING SHALL NOT BE HELD RESPONSIBLE FOR ANY POSSIBLE ERRORS OR OMISSIONS DUE TO SAID WINTER CONDITIONS.

TOTAL AREA
 1,464,658 Sq. Feet
 33.624 Acres
INCLUDING R/W
 1,433,400 Sq. Feet
 32.906 Acres
EXCLUDING R/W

BASIS OF BEARINGS
 THE NORTH LINE OF THE NORTHWEST 1/4 OF SECTION 36, TOWNSHIP 2 NORTH, RANGE 1 WEST, BEARS N 89°30'20" W AS REFERENCED TO THE GRANT COUNTY COORDINATE SYSTEM, NAD83 (2011).



UTILITY DISCLAIMER

The locations of all above ground utilities and appurtenances, such as electric lines, water lines, gas lines, sewer lines, storm sewers, etc., of which can be visually inspected, are shown herein based on actual surveyed locations. The locations of sanitary sewer and storm sewer manholes, of which can be visually inspected, are shown herein based on actual surveyed locations. Depths and material types of pipes, which can be visually inspected, entering and exiting sanitary sewer and storm sewer manholes, are shown herein based on visual inspection, field measurements, and as-built drawings, if available. If depths, sizes, and material types of pipes are shown herein, based on as-built drawings only, they are noted accordingly and are considered approximate. If visual inspection reveals what can be seen from the ground surface, "Point of Beginning" did not enter into manholes to complete visual inspection underground.

The locations of all underground utilities and appurtenances, visible to visually inspect and/or field measure, shown herein are only approximate. These utilities and appurtenances will be shown based on plans obtained from utility companies or provided by the Owner/Client and markings by utility companies or municipalities (Digging Markings) and other appropriate sources (with reference as to the source of information). Additional utility lines not discovered, marked, or shown on as-built plans available to us, during the search of records and the field survey, may exist. Any construction using the information shown herein should be done with extreme caution upon the site may result in the discovery of additional underground utilities not shown herein. POB makes no warranty of any kind, express or implied, with respect to the existing underground utilities and appurtenances, of which are unable to be visually inspected and/or field measure, whether shown herein or not. Prior to construction, it is the contractor's responsibility to field measure, verify the type of underground public and private utilities or structures within all construction limits and field measure, or within the existing conditions as shown herein provided. *Digging Markings 2023/01/27 for public utility was confirmed for this survey. *A private utility locate was performed on this project by Private Locate Inc. Please refer Private Locate Inc. at 715-445-0383 with any private utility questions.

BENCH MARK

ELEVATIONS ARE REFERENCED TO NAVD 88 DATUM.

BENCHMARK #1
 BURY BOLT ON HYDRANT, LOCATED AT THE WEST SIDE OF THE INTERSECTION OF SOUTH SCHOOL STREET AND WEST WEBSTER STREET. ELEVATION = 1006.42

BENCHMARK #2
 BURY BOLT ON HYDRANT, LOCATED AT THE NORTHWEST CORNER OF THE INTERSECTION OF NORTH SCHOOL STREET AND WEST BENTON STREET. ELEVATION = 1004.51

BENCHMARK #3
 CHISELED SQUARE ON EAST SIDE OF LIGHT POLE BASE, LOCATED APPROXIMATELY 155 FEET SOUTH OF THE SOUTH SIDE OF THE CUBA CITY MIDDLE-HIGH SCHOOL BUILDING. ELEVATION = 1002.76

BENCHMARK #4
 BURY BOLT ON HYDRANT, LOCATED AT THE NORTHWEST CORNER OF THE INTERSECTION OF SOUTH SCHOOL STREET AND WEST WEBSTER STREET. ELEVATION = 980.86

BENCHMARK #5
 CHISELED SQUARE ON WEST SIDE OF LIGHT POLE BASE, LOCATED ON THE SOUTH SIDE OF WEST ROOSEVELT STREET, APPROXIMATELY 125 FEET WEST OF THE INTERSECTION OF WEST ROOSEVELT STREET AND NORTH SCHOOL STREET. ELEVATION = 1002.81

UNPLATTED LANDS BY OTHERS

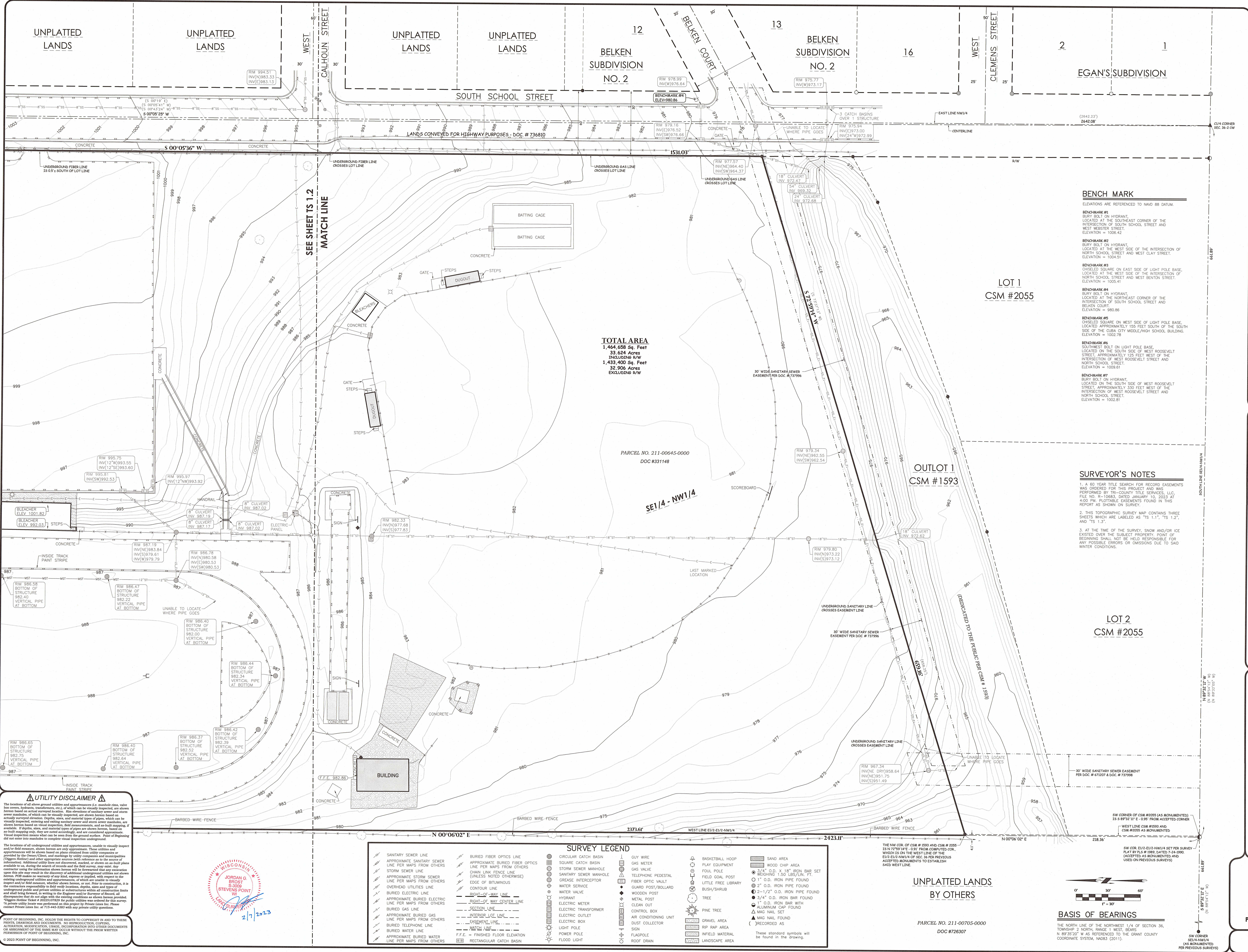
PARCEL NO. 211-00645-0000
 DOC #331148

PARCEL NO. 211-00705-0000
 DOC #726307

SURVEY LEGEND

<ul style="list-style-type: none"> SANITARY SEWER LINE APPROXIMATE SANITARY SEWER LINE PER MAPS FROM OTHERS STORM SEWER LINE APPROXIMATE STORM SEWER LINE PER MAPS FROM OTHERS OVERHEAD UTILITIES LINE BURIED ELECTRIC LINE APPROXIMATE BURIED ELECTRIC LINE PER MAPS FROM OTHERS BURIED GAS LINE APPROXIMATE BURIED GAS LINE PER MAPS FROM OTHERS BURIED TELEPHONE LINE APPROXIMATE BURIED WATER LINE PER MAPS FROM OTHERS 	<ul style="list-style-type: none"> BURIED FIBER OPTICS LINE APPROXIMATE BURIED FIBER OPTICS LINE PER MAPS FROM OTHERS CHAIN LINK FENCE LINE (UNLESS NOTED OTHERWISE) EDGE OF BITUMINOUS CONTOUR LINE RIGHT-OF-WAY LINE RIGHT-OF-WAY CENTER LINE SECTION LINE INTERIOR LOT LINE EASEMENT LINE WALL LINE RECTANGULAR CATCH BASIN 	<ul style="list-style-type: none"> CIRCULAR CATCH BASIN SQUARE CATCH BASIN STORM SEWER MANHOLE SANITARY SEWER MANHOLE GREASE INTERCEPTOR WATER SERVICE WATER VALVE HYDRANT ELECTRIC METER ELECTRIC TRANSFORMER ELECTRIC OUTLET ELECTRIC BOX LIGHT POLE POWER POLE FLOOD LIGHT 	<ul style="list-style-type: none"> GUY WIRE GAS METER GAS VALVE TELEPHONE PEDESTAL FIBER OPTIC VAULT GUARD POST/BOLLARD WOODEN POST HYDRANT CONTROL BOX AIR CONDITIONING UNIT DUST COLLECTOR METAL POST FLAGPOLE ROOF DRAIN 	<ul style="list-style-type: none"> BASKETBALL HOOP PLAY EQUIPMENT FOUL POLE FIELD GOAL POST LITTLE FLEET LIBRARY BUSH/SHRUB TREE PINE TREE GRAVEL AREA RIP RAP AREA INFIELD MATERIAL LANDSCAPE AREA
--	---	--	---	---

These standard symbols will be found in the drawing.



TOTAL AREA
 1,464,658 Sq. Feet
 33.624 Acres
 INCLUDING R/W
 1,433,400 Sq. Feet
 32.906 Acres
 EXCLUDING R/W

- BENCH MARK**
 ELEVATIONS ARE REFERENCED TO NAVD 88 DATUM.
- BENCH MARK #1**
BURY BOLT ON HYDRANT, LOCATED AT THE SOUTHWEST CORNER OF THE INTERSECTION OF SOUTH SCHOOL STREET AND WEST WEBSTER STREET. ELEVATION = 1004.51
 - BENCH MARK #2**
BURY BOLT ON HYDRANT, LOCATED AT THE INTERSECTION OF NORTH SCHOOL STREET AND WEST CLAY STREET. ELEVATION = 1004.51
 - BENCH MARK #3**
CHISELED SQUARE ON EAST SIDE OF LIGHT POLE BASE, LOCATED AT THE INTERSECTION OF NORTH SCHOOL STREET AND WEST BENTON STREET. ELEVATION = 1005.41
 - BENCH MARK #4**
BURY BOLT ON HYDRANT, LOCATED AT THE NORTHEAST CORNER OF THE INTERSECTION OF SOUTH SCHOOL STREET AND BELKEN COURT. ELEVATION = 980.86
 - BENCH MARK #5**
CHISELED SQUARE ON WEST SIDE OF LIGHT POLE BASE, LOCATED APPROXIMATELY 155 FEET SOUTH OF THE SOUTH SIDE OF THE CUBA CITY MIDDLE/HIGH SCHOOL BUILDING. ELEVATION = 1002.78
 - BENCH MARK #6**
SOUTHWEST BOLT ON LIGHT POLE BASE, LOCATED ON THE SOUTH SIDE OF WEST ROOSEVELT STREET, APPROXIMATELY 125 FEET WEST OF THE INTERSECTION OF WEST ROOSEVELT STREET AND NORTH SCHOOL STREET. ELEVATION = 1009.61
 - BENCH MARK #7**
BURY BOLT ON HYDRANT, LOCATED ON THE SOUTH SIDE OF WEST ROOSEVELT STREET, APPROXIMATELY 330 FEET WEST OF THE INTERSECTION OF WEST ROOSEVELT STREET AND NORTH SCHOOL STREET. ELEVATION = 1002.81

SURVEYOR'S NOTES

- A 60 YEAR TITLE SEARCH FOR RECORD EASEMENTS WAS ORDERED FOR THIS PROJECT AND WAS PERFORMED BY THE COUNTY TITLE SERVICES, LLC. FILE NO. R-10683, DATED JANUARY 10, 2023 AT 4:00 PM. PLOTTABLE EASEMENTS FOUND IN THIS REPORT AS SHOWN ON SURVEY.
- THIS TOPOGRAPHIC SURVEY MAP CONTAINS THREE SHEETS WHICH ARE LABELED AS "TS 1.1", "TS 1.2", AND "TS 1.3".
- AT THE TIME OF THE SURVEY, SNOW AND/OR ICE EXISTED ON THE SUBJECT PROPERTY. POINT OF BEGINNING SHOULD NOT BE HELD RESPONSIBLE FOR ANY POSSIBLE ERRORS OR OMISSIONS DUE TO SAID WINTER CONDITIONS.

UTILITY DISCLAIMER

The location of all underground utilities and appurtenances, including but not limited to, gas, electric, fiber optic, water, sewer, and storm sewer, are shown based on utility maps and other available information. The utility maps and other available information are not guaranteed to be accurate. The surveyor does not warrant the accuracy of the utility maps and other available information. The surveyor is not responsible for any damage to or destruction of any utility lines or appurtenances. The surveyor is not responsible for any damage to or destruction of any utility lines or appurtenances. The surveyor is not responsible for any damage to or destruction of any utility lines or appurtenances.

UTILITY DISCLAIMER

The location of all above ground utilities and appurtenances, including but not limited to, gas, electric, fiber optic, water, sewer, and storm sewer, are shown based on utility maps and other available information. The utility maps and other available information are not guaranteed to be accurate. The surveyor does not warrant the accuracy of the utility maps and other available information. The surveyor is not responsible for any damage to or destruction of any utility lines or appurtenances. The surveyor is not responsible for any damage to or destruction of any utility lines or appurtenances. The surveyor is not responsible for any damage to or destruction of any utility lines or appurtenances.

SURVEY LEGEND

SANITARY SEWER LINE	BURIED FIBER OPTICS LINE	CIRCULAR CATCH BASIN	UTILITY
APPROXIMATE SANITARY SEWER LINE PER MAPS FROM OTHERS	APPROXIMATE BURIED FIBER OPTICS LINE PER MAPS FROM OTHERS	SQUARE CATCH BASIN	GAS METER
STORM SEWER LINE	CHAIN LINK FENCE LINE (UNLESS NOTED OTHERWISE)	STORM SEWER MANHOLE	GAS VALVE
APPROXIMATE STORM SEWER LINE PER MAPS FROM OTHERS	EDGE OF BITUMINOUS CONTOUR LINE	SANITARY SEWER MANHOLE	TELEPHONE PEDESTAL
OVERHEAD UTILITIES LINE	RIGHT-OF-WAY LINE	GREASE INTERCEPTOR	FIBER OPTIC VAULT
BURIED UTILITIES LINE	RIGHT-OF-WAY CENTER LINE	WATER SERVICE	WOODEN POST
APPROXIMATE BURIED ELECTRIC LINE PER MAPS FROM OTHERS	SECTION LINE	WATER VALVE	METAL POST
BURIED GAS LINE	EASEMENT LINE	HYDRANT	CLEAN OUT
APPROXIMATE BURIED GAS LINE PER MAPS FROM OTHERS	MATCH LINE	ELECTRIC METER	CONTROL BOX
BURIED TELEPHONE LINE	F.F.E. = FINISHED FLOOR ELEVATION	BURIED ELECTRIC LINE	AIR CONDITIONING UNIT
BURIED WATER LINE	RECTANGULAR CATCH BASIN	APPROXIMATE BURIED WATER LINE PER MAPS FROM OTHERS	DUST COLLECTOR
APPROXIMATE BURIED WATER LINE PER MAPS FROM OTHERS		BURIED TELEPHONE LINE	ELECTRIC BOX
		BURIED WATER LINE	POWER POLE
		APPROXIMATE BURIED WATER LINE PER MAPS FROM OTHERS	FLAGPOLE
			ROOF DRAIN

UNPLATTED LANDS BY OTHERS

PARCEL NO. 211-00705-0000
 DOC #726307

BASIS OF BEARINGS

THE NORTH LINE OF THE NORTHWEST 1/4 OF SECTION 36, TOWNSHIP 3 NORTH, RANGE 1 WEST, BEARS N 89°35'20" W AS REFERENCED TO THE GRANT COUNTY COORDINATE SYSTEM, NAD83 (2011).

REVISIONS

CHECKED BY:	JORDAN G. BROST
DRAWN BY:	CHAD A. GORETSKI
DATE:	2-7-23
PROJECT NO.:	22.463

TOPOGRAPHIC SURVEY

**CUBA CITY SCHOOL DISTRICT
 CUBA CITY SCHOOLS
 CITY OF CUBA CITY
 GRANT COUNTY, WISCONSIN**

Civil Engineering
 Land Surveying
 Landscape Architecture

4941 Kirschling Court
 Stevens Point, WI 54481
 715.344.9999 [PH] 715.344.9922 [FX]

POB
 Point of Beginning

TS 1.3

49094 FEB 13 2023