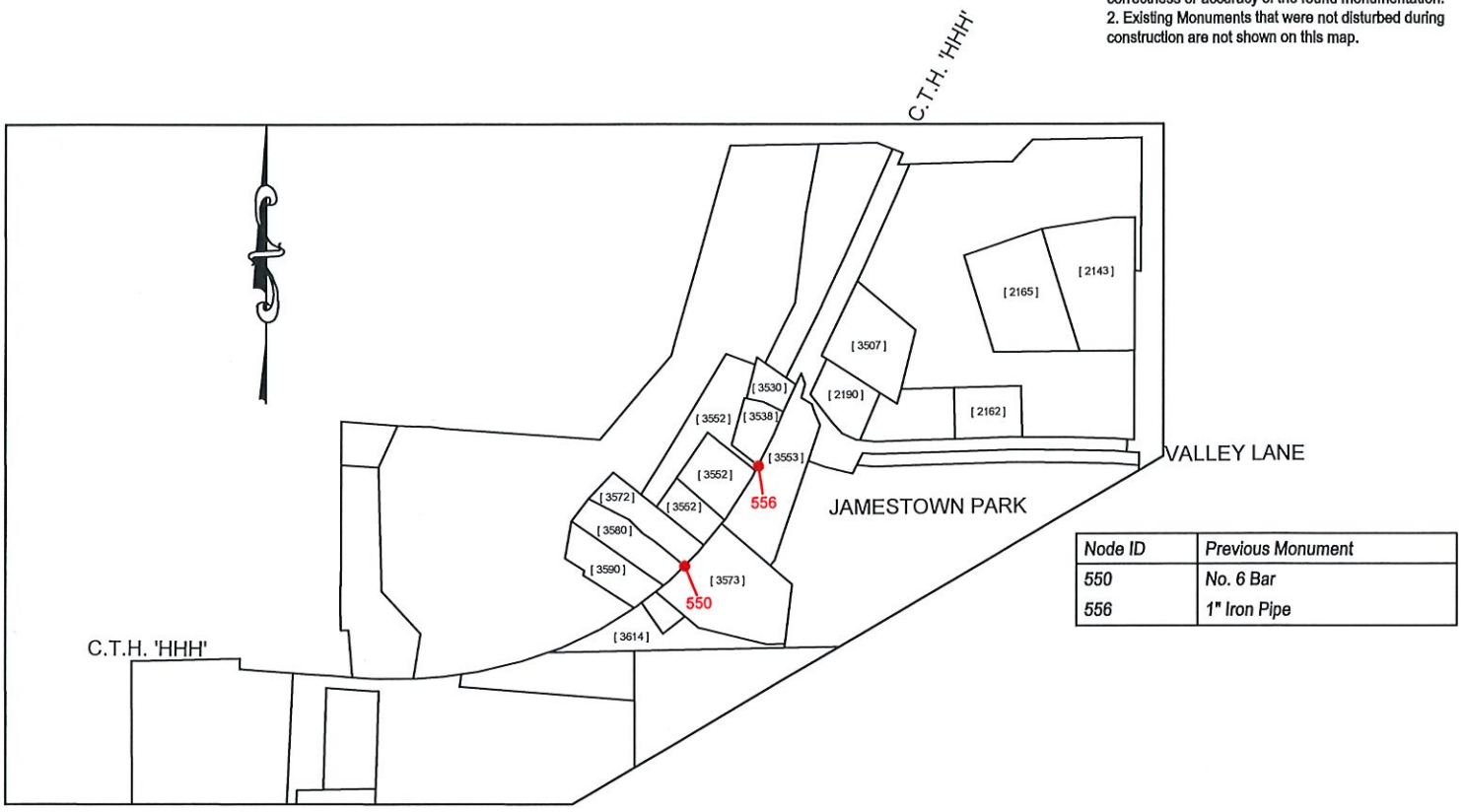


# COUNTY TRUNK HIGHWAY 'HHH' REMONUMENTATION MAP

Surveyor's Notes:

1. Surveyor has made no investigation with regard to the correctness or accuracy of the found monumentation.
2. Existing Monuments that were not disturbed during construction are not shown on this map.



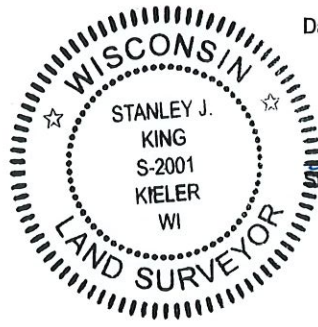
Legend

- Set No. 6 x 18" rebar - wt = 1.50 #/l.f.
- [ 3580 ] Street Address

I, Stanley J. King, Registered Wisconsin Land Surveyor, do hereby certify:

That monuments described on this map were reset under my direct supervision and at the direction of the Kielers Sanitary District No. 1. The purpose of this remonumentation was to reset any existing monuments along County Trunk Highway 'HHH' that were disturbed during construction completed in 2022. Monuments found and reset have not been checked for correctness in relation to property lines and right-of-way.

Dated this 15th day of, December, 2022.



*Stanley J. King*  
Stanley J. King, S-2001



PROFESSIONAL CIVIL, MUNICIPAL, & STRUCTURAL ENGINEERING  
GRANT WRITING • LAND DEVELOPMENT • PLANNING & CADD SERVICES

875 SOUTH CHESTNUT STREET PHONE: (608) 348-5355  
PLATTEVILLE, WISCONSIN 53818

898 JACKSON STREET PHONE: (563) 542-9005  
DUBUQUE, IOWA 52001