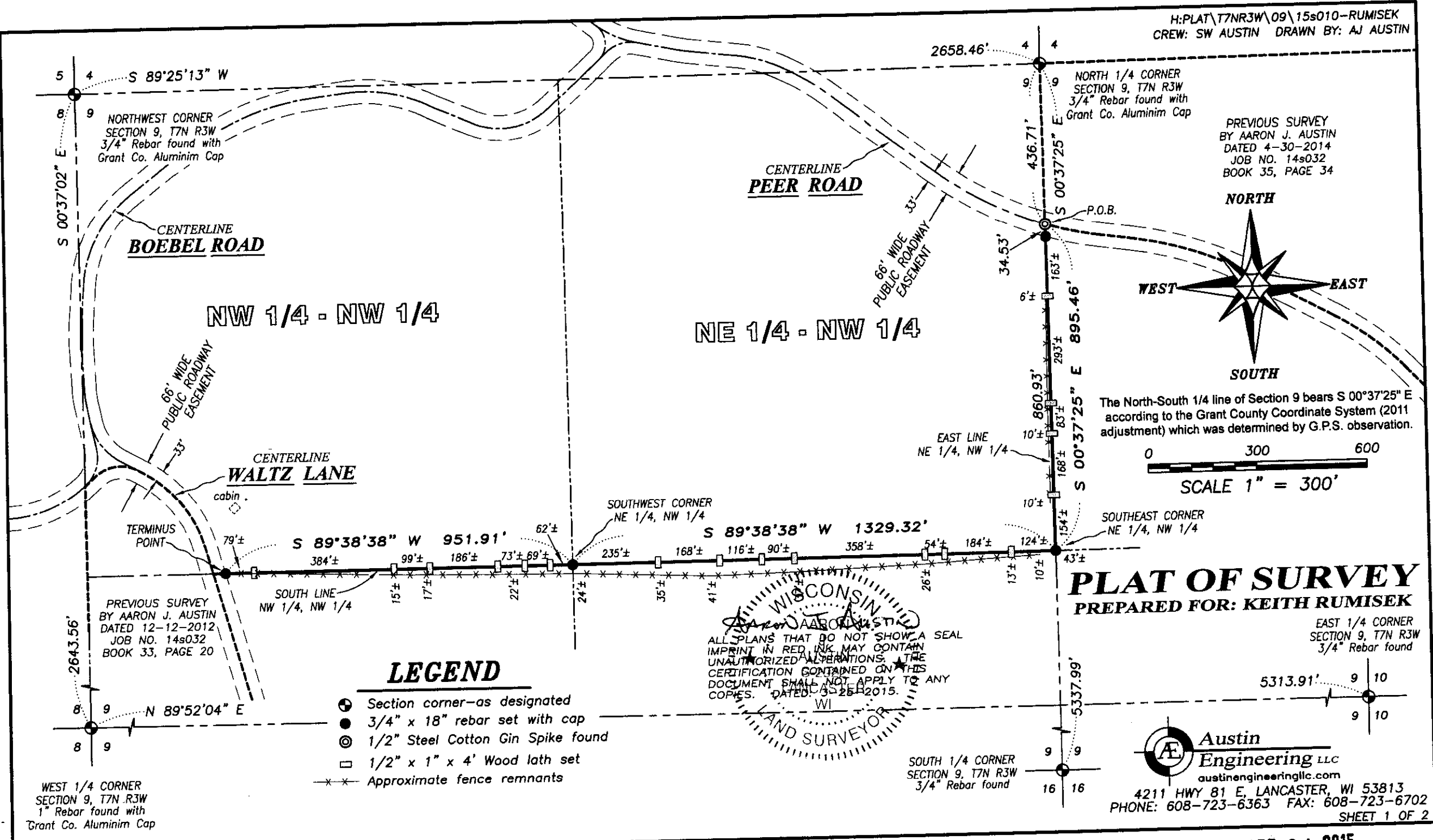
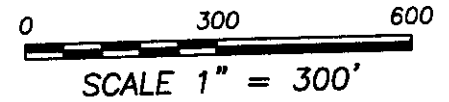


H:\PLAT\T7NR3W\09\15s010-RUMISEK  
CREW: SW AUSTIN DRAWN BY: AJ AUSTIN



PREVIOUS SURVEY  
BY AARON J. AUSTIN  
DATED 4-30-2014  
JOB NO. 14s032  
BOOK 35, PAGE 34

The North-South 1/4 line of Section 9 bears S 00°37'25" E according to the Grant County Coordinate System (2011 adjustment) which was determined by G.P.S. observation.

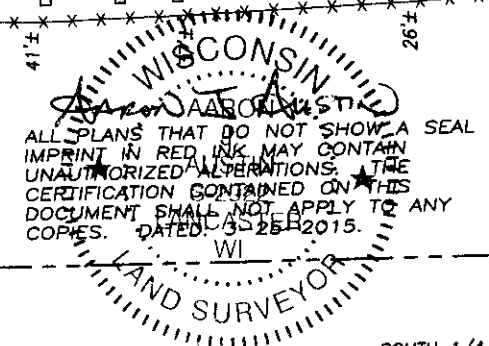


**PLAT OF SURVEY**  
PREPARED FOR: KEITH RUMISEK

EAST 1/4 CORNER  
SECTION 9, T7N R3W  
3/4" Rebar found

**LEGEND**

- Section corner—as designated
- 3/4" x 18" rebar set with cap
- ⊙ 1/2" Steel Cotton Gin Spike found
- 1/2" x 1" x 4' Wood lath set
- ×× Approximate fence remnants



**Austin Engineering LLC**  
austinengineeringllc.com  
4211 HWY 81 E, LANCASTER, WI 53813  
PHONE: 608-723-6363 FAX: 608-723-6702  
SHEET 1 OF 2

APR 04 2015

