

W. B. E. M.

J. B. M.

V. L. H. G. M.

Spring Hollow Road

Private Highway

Furnace Road

Plattville street.

Out Lot No. 1.

James, Turner.

Out Lot No. 3.

Out Lot No. 4.

Out Lot No. 2.

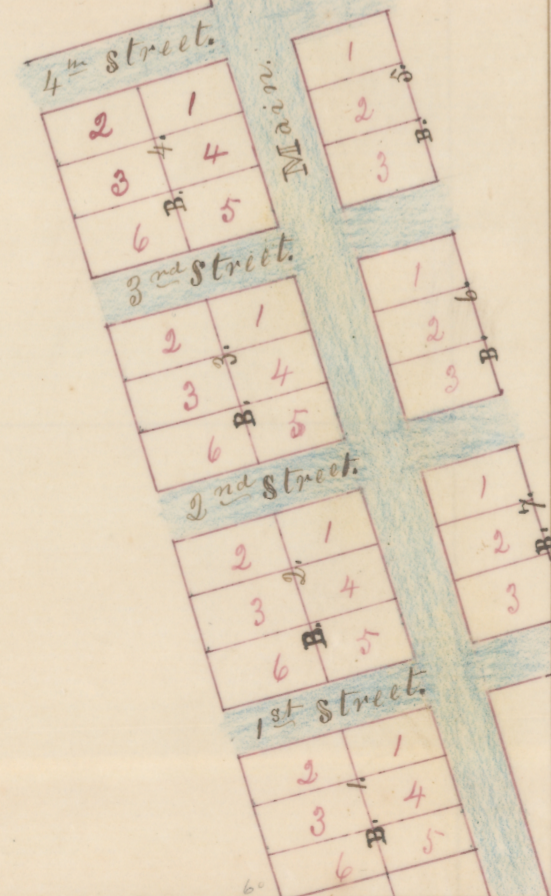
Kirkpatrick.

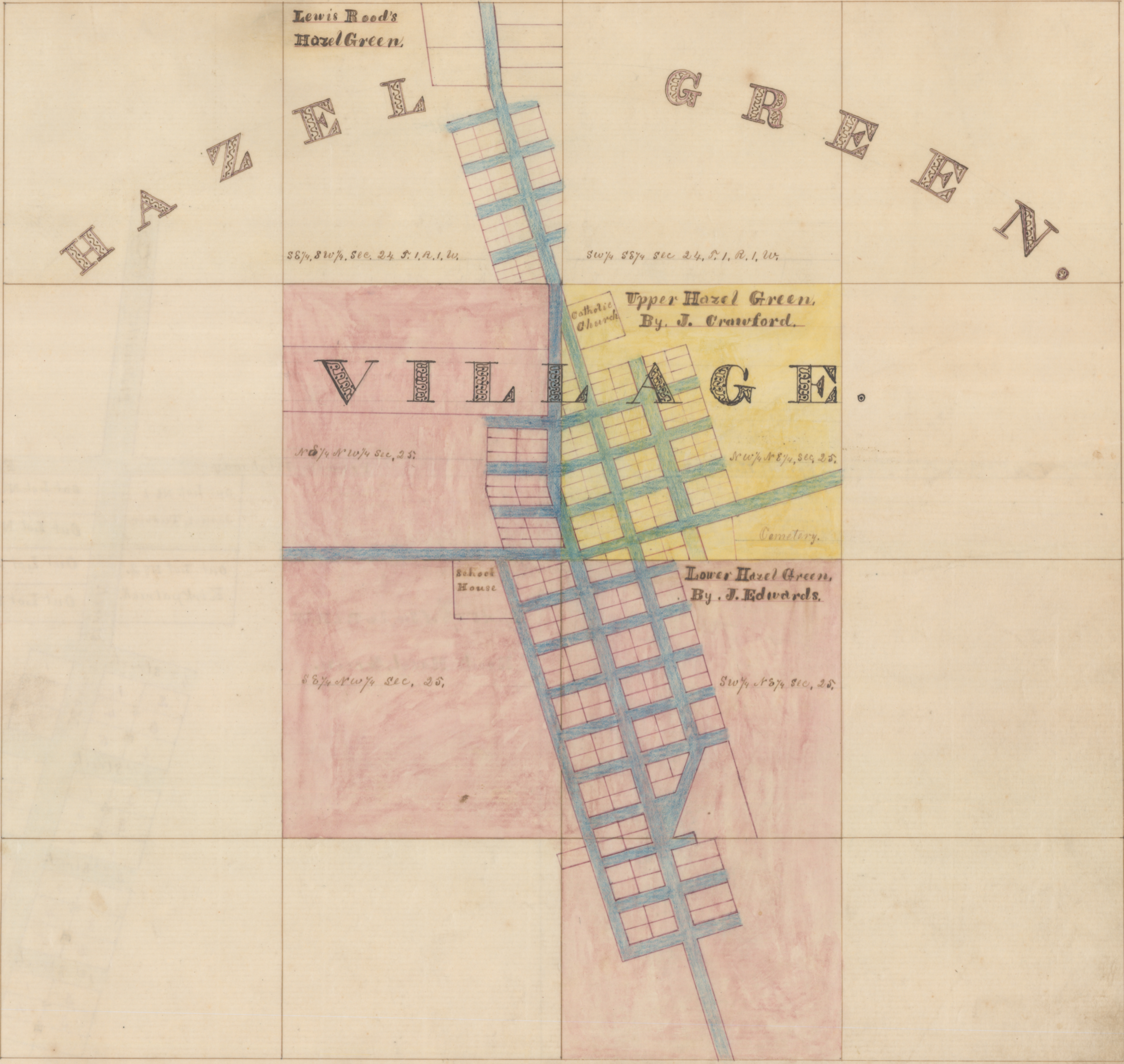
Out Lot No. 5.

Out Lot No. 6.

SE 1/4 of SW 1/4 of Sec. 24, T. 1. R. W.

Rood's Hazel, Green.





Lewis Road's
Hazel Green.

H A Z E L G R E E N

SE 1/4 SW 1/4 Sec. 24 S. 1. R. 1. W.

SW 1/4 SE 1/4 Sec 24, S. 1. R. 1. W.

Upper Hazel Green,
By J. Crawford.

V I R G I N I A

NE 1/4 NW 1/4 Sec. 25.

SW 1/4 NE 1/4 Sec. 25.

Cemetery.

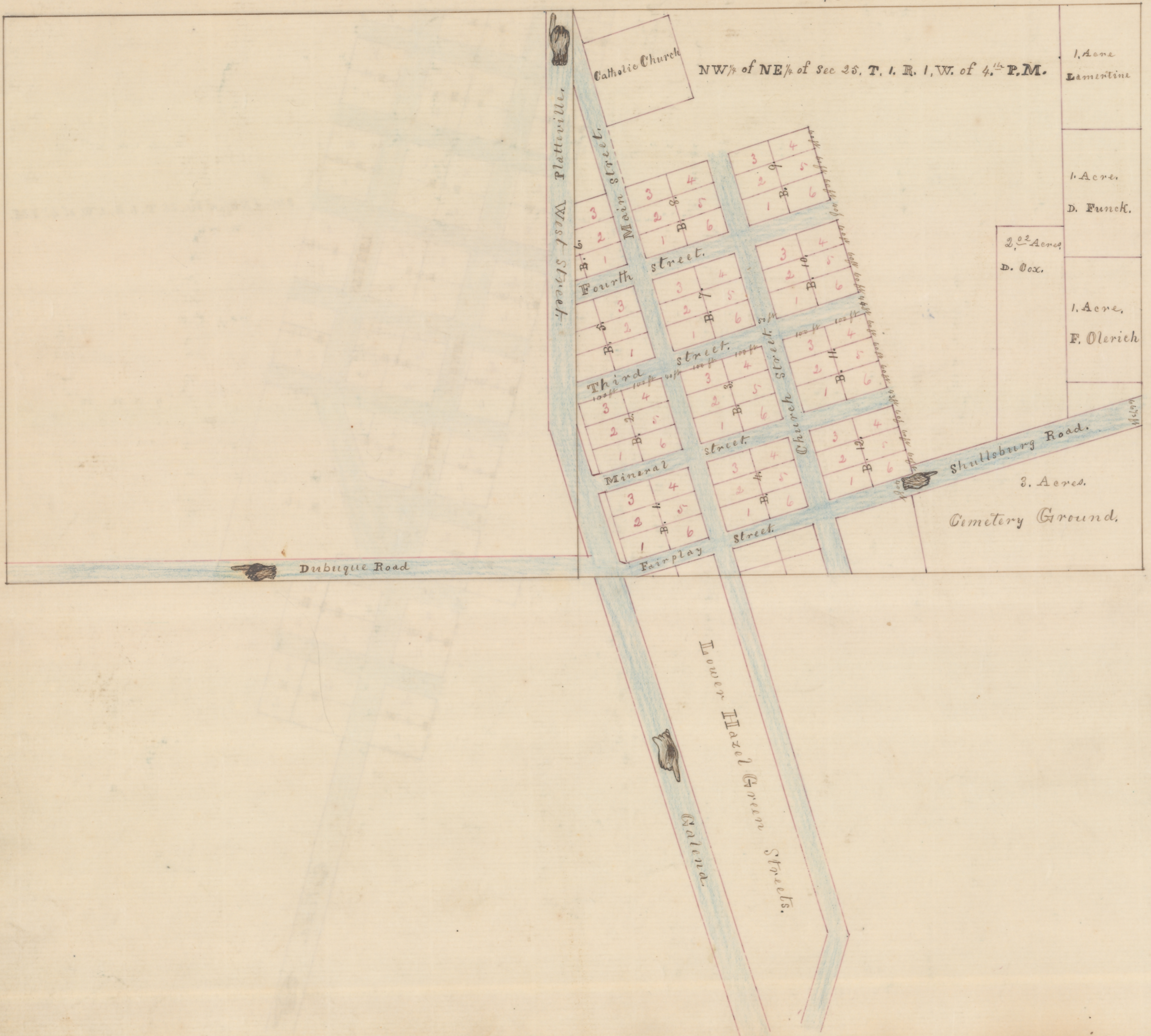
School
House

Lower Hazel Green,
By J. Edwards.

SE 1/4 NW 1/4 Sec. 25.

SW 1/4 NE 1/4 Sec. 25.

Village of Upper Hazel Green - Plat by Jefferson, Crawford
1855



1. Acre
Lamertine

1. Acre.
D. Funck.

2. ⁰² Acres
D. Cox.

1. Acre,
F. Olerich

3. Acres.
Cemetery Ground.

