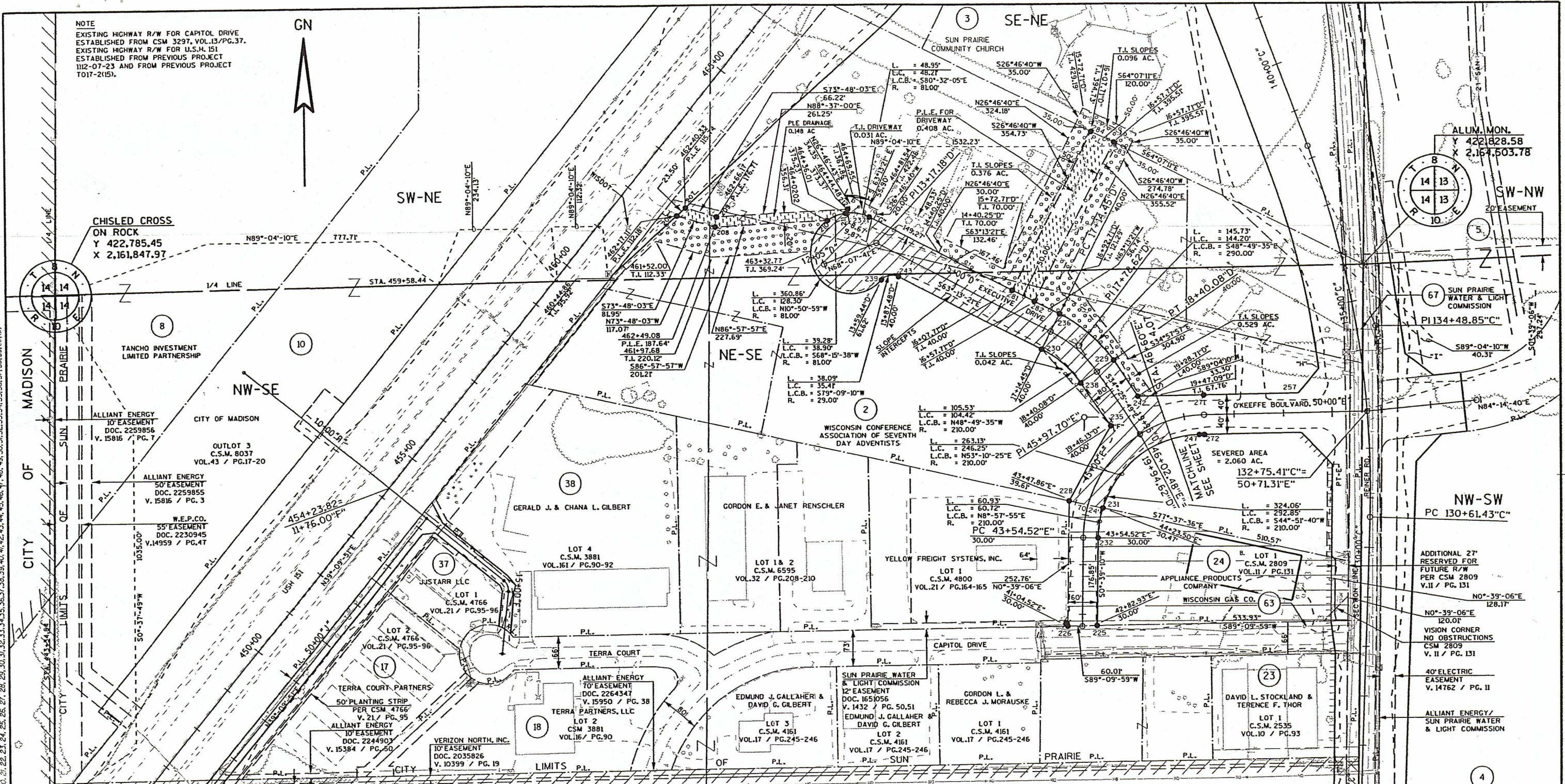


NOTE
 EXISTING HIGHWAY R/W FOR CAPITOL DRIVE
 ESTABLISHED FROM CSM 3297, VOL.13/PG.37.
 EXISTING HIGHWAY R/W FOR U.S.H. 151
 ESTABLISHED FROM PREVIOUS PROJECT
 112-07-23 AND FROM PREVIOUS PROJECT
 T017-2(15).

GN



CHISLED CROSS
 ON ROCK
 Y 422,785.45
 X 2,161,847.97

ALUM. MON.
 Y 422,828.58
 X 2,161,503.78

TANCHO INVESTMENT
 LIMITED PARTNERSHIP

CITY OF MADISON
 OUTLOT 3
 C.S.M. 8037
 VOL.43 / PG.17-20

ALLIANT ENERGY
 50' EASEMENT
 DOC. 2259855
 V. 15816 / PG. 3

W.E.P.CO.
 55' EASEMENT
 DOC. 2230945
 V.14959 / PG.47

GERALD J. & CHANA L. GILBERT

GORDON E. & JANET RENSCHLER

LOT 1
 C.S.M. 4800
 VOL.21 / PG.164-165

LOT 1
 C.S.M. 2809
 VOL.II / PG.131

TERRA COURT PARTNERS
 50' PLANTING STRIP
 PER CSM 4766
 V. 21 / PG. 95

ALLIANT ENERGY
 70' EASEMENT
 DOC. 2264347
 V. 15950 / PG. 38

EDMUND J. GALLAHER &
 DAVID G. GILBERT

GORDON L. &
 REBECCA J. MORAUŠKE

DAVID L. STOCKLAND &
 TERENCE F. THOR

AMERITECH
 1700 R/W GRANT
 DOC. 2044524
 V. 10589 / PG. 30

VERIZON NORTH, INC.
 10' EASEMENT
 DOC. 2035826
 V. 10399 / PG. 19

VERIZON NORTH, INC.
 EASEMENT RELEASE 10.0'
 V. 10399 / PG. 19 PARCEL 17

WISCONSIN GAS CO.
 PARCEL 2

SUN PRAIRIE WATER &
 LIGHT COMMISSION
 EASEMENT RELEASE 12.0'
 V. 182 / PG. 147
 V. 1973 / PG. 4
 V. 1432 / PG. 50,51
 PARCEL 2 & 3

P.I. STA.=17+78.62"D"
 Y 422,703.34
 X 2,164,109.68
 DELTA=28°-47'-33"
 D.=22°-55'-06"
 T.=62.17'
 L.=125.63'
 R.=250.00'
 P.C. STA.=17+14.45"D"
 P.T. STA.=18+40.08"D"

P.I. STA.=45+97.70"E"
 Y 422,558.15
 X 2,164,120.51
 DELTA=88°-25'-00"
 D.=22°-55'-06"
 T.=243.18'
 L.=385.79'
 R.=250.00'
 P.C. STA.=43+54.52"E"
 P.T. STA.=47+40.31"E"

DAVID C. & STEPHEN J. SUCHOMEL

P.I. STA.=17+78.62"D"
 DELTA=1°-14'-04"

PT*-PT*	BEARING	DISTANCE
211-212	N26°-46'-43"E	8.26'
228-235	N29°-11'-29"E	172.88'
235-238	N34°-25'-49"W	106.06'
230-243	N63°-13'-21"W	326.97'
237-236	S63°-13'-21"E	433.35'
229-242	S34°-25'-49"E	88.63'
242-257	N89°-04'-10"E	323.37'
235-230	N41°-34'-20"W	208.82'

REVISION DATE: 8-22-2003
 SCALE, FEET: 0 100 200
 DATE: 11-14-2000
 HIGHWAY: U.S.H. 151
 R/W PROJECT NUMBER: 1112-07-22
 SHEET NUMBER: 4.10 E
 GRID FACTOR: 0.999915
 COUNTY: DANE
 FEDERAL PROJECT NUMBER: