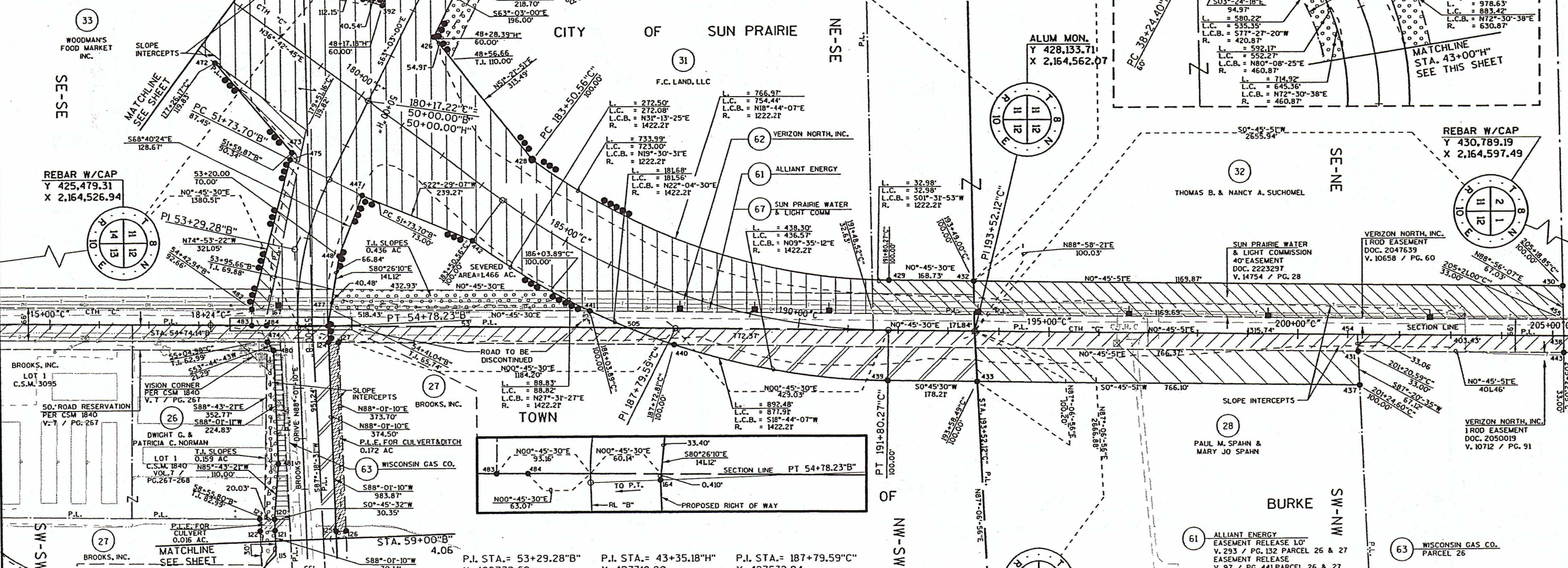


PT*-PT*	BEARING	DISTANCE
120-121	N88°-01'-10"E	22.56'
121-122	S01°-59'-09"E	30.00'
122-123	S88°-00'-51"W	24.00'
123-120	N00°-45'-30"E	30.03'
124-125	N88°-01'-10"E	374.50'
125-126	N01°-58'-50"W	20.00'
126-127	S88°-01'-10"W	373.70'
127-124	N00°-45'-30"E	20.02'
395-396	S08°-24'-18"E	94.97'
396-394	S86°-35'-42"W	77.19'
447-446	N20°-05'-12"E	205.53'
472-473	S49°-44'-49"W	235.19'
474-124	N0°-45'-30"E	123.13'
437-454	N87°-20'-35"E	100.18'
430-438	N88°-56'-07"E	100.05'
443-438	N89°-14'-08"W	33.00'
438-430	S88°-56'-07"W	100.05'
482-483	N89°-14'-28"W	33.00'
474-484	S88°-01'-10"W	33.04'
474-115	N85°-01'-10"E	421.85'
164-124	N88°-01'-10"E	32.63'

NOTE  
 EXISTING HIGHWAY R/W FOR CTH "C" ESTABLISHED FROM GOVERNMENTAL LAND LINE.  
 EXISTING HIGHWAY R/W FOR BROOKS DRIVE ESTABLISHED FROM CSM 1840 VOL.7/PG.267-268 AND FROM CSM 2730 VOL.11/PG.8-11



POINT NO.	STATION	OFFSET
120	58+56.75"B	P.L.E. T.I. 62.99'
121	58+79.32"B	P.L.E. 62.99'
122	58+79.32"B	P.L.E. 92.99'
123	58+55.32"B	P.L.E. T.I. 92.99'
124	55+10.86"B	P.L.E. 60.00'
125	58+85.52"B	P.L.E. 60.00'
126	58+85.52"B	P.L.E. 80.00'
127	55+11.82"B	P.L.E. 80.00'

POINT NO.	STATION	OFFSET
120	58+56.75"B	P.L.E. T.I. 62.99'
121	58+79.32"B	P.L.E. 62.99'
122	58+79.32"B	P.L.E. 92.99'
123	58+55.32"B	P.L.E. T.I. 92.99'
124	55+10.86"B	P.L.E. 60.00'
125	58+85.52"B	P.L.E. 60.00'
126	58+85.52"B	P.L.E. 80.00'
127	55+11.82"B	P.L.E. 80.00'

P.I. STA. = 53+29.28"B  
 Y 426772.62  
 X 2164391.91  
 DELTA = 28°-55'-50"  
 D = 9°-30'-00"  
 T = 155.59  
 L = 304.53  
 R = 603.11  
 P.C. STA. = 51+73.70"B  
 P.T. STA. = 54+78.23"B

P.I. STA. = 43+35.18"H  
 Y 427319.90  
 X 2163316.48  
 DELTA = 88°-52'-45"  
 D = 11°-00'-00"  
 T = 510.78  
 L = 807.99'  
 R = 520.87'  
 P.C. STA. = 38+24.40"H  
 P.T. STA. = 46+32.39"H

P.I. STA. = 187+79.59"C  
 Y 427532.94  
 X 2164554.12  
 DELTA = 35°-57'-16"  
 D = 4°-20'-00"  
 T = 429.03'  
 L = 829.72'  
 R = 1322.21'  
 P.C. STA. = 183+50.56"C  
 P.T. STA. = 191+80.27"C

P.I. STA. = 193+52.12"C  
 D = 0°-0'-22" RT.

REVISION DATE: 8-22-2003 11-07-2003	SCALE, FEET: 0 100 200	DATE: 11-14-2000	HIGHWAY: U.S.H. 151	R/W PROJECT NUMBER: 1112-07-22	SHEET NUMBER: 4.08	E
ORIGINATOR:	PLOT NAME:	GRID FACTOR: 0.999915	COUNTY: DANE	FEDERAL PROJECT NUMBER:		
FILE NAME:	ORIGINATOR:	PLOT SCALE:	PLOT DATE: 24-NOV-2003 17:26			