

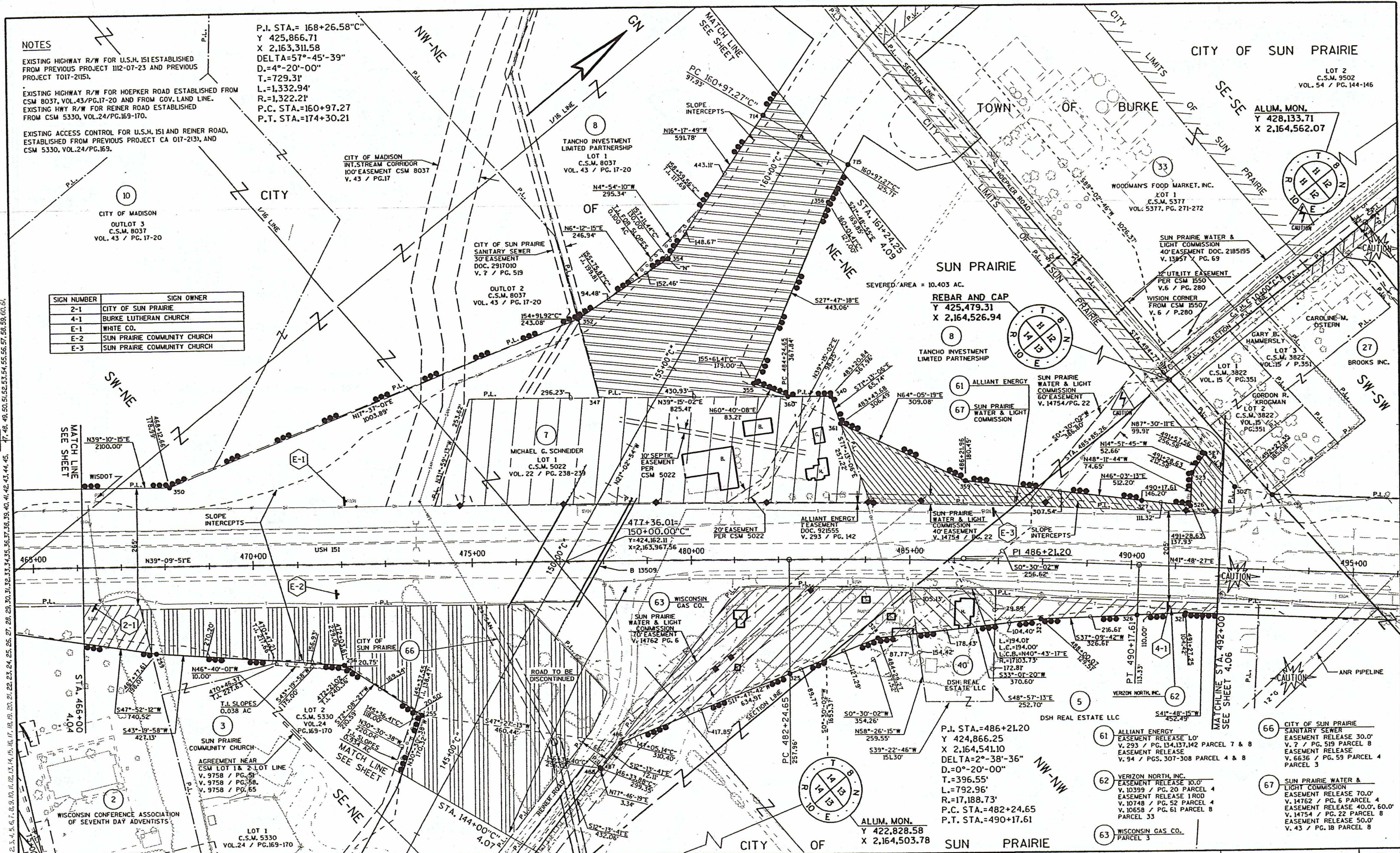
NOTES

EXISTING HIGHWAY R/W FOR U.S.H. 151 ESTABLISHED FROM PREVIOUS PROJECT 1112-07-23 AND PREVIOUS PROJECT 1017-2153.
 EXISTING HIGHWAY R/W FOR HOEPKER ROAD ESTABLISHED FROM CSM 8037, VOL.43/PG.17-20 AND FROM GOV. LAND LINE.
 EXISTING HWY R/W FOR REINER ROAD ESTABLISHED FROM CSM 5330, VOL.24/PG.169-170.
 EXISTING ACCESS CONTROL FOR U.S.H. 151 AND REINER ROAD, ESTABLISHED FROM PREVIOUS PROJECT CA 017-2133, AND CSM 5330, VOL.24/PG.169.

P.I. STA.= 168+26.58"
 Y 425,866.71
 X 2,163,311.58
 DELTA=57°-45'-39"
 D.=4°-20'-00"
 T.=729.31'
 L.=1,332.94'
 R.=1,322.21'
 P.C. STA.=160+97.27
 P.T. STA.=174+30.21

SIGN NUMBER	SIGN OWNER
2-1	CITY OF SUN PRAIRIE
4-1	BURKE LUTHERAN CHURCH
E-1	WHITE CO.
E-2	SUN PRAIRIE COMMUNITY CHURCH
E-3	SUN PRAIRIE COMMUNITY CHURCH

LEVELS ON 1, 2, 3, 4, 5, 6, 7, 8, 9, 10, 11, 12, 13, 14, 15, 16, 17, 18, 19, 20, 21, 22, 23, 24, 25, 26, 27, 28, 29, 30, 31, 32, 33, 34, 35, 36, 37, 38, 39, 40, 41, 42, 43, 44, 45, 47, 48, 49, 50, 51, 52, 53, 54, 55, 56, 57, 58, 59, 60, 61



REVISION DATE: 8-22-2003 11-07-2003	SCALE, FEET: 0 100 200	DATE: 11-14-2000	HIGHWAY: U.S.H. 151	R/W PROJECT NUMBER: 1112-07-22	SHEET NUMBER: 4.05
		GRID FACTOR: 0.999915	COUNTY: DANE	FEDERAL PROJECT NUMBER:	E