

**CONVENTIONAL ABBREVIATIONS**

ACCESS RIGHTS	AR
ACRES	AC
AHEAD	AH
ALUMINUM	ALUM
AND OTHERS	ET AL
BACK	BK
BLOCK	BLK
CENTERLINE	C/L
CERTIFIED SURVEY MAP	CSM
CONCRETE	CONC
COUNTY	CO
COUNTY TRUNK HIGHWAY	CTH
DISTANCE	DIST
CORNER	COR
DOCUMENT NUMBER	DOC
EASEMENT	EASE
EXISTING	EX
GAS VALVE	GV
GRID NORTH	GN
HIGHWAY EASEMENT	HE
IDENTIFICATION	ID
LAND CONTRACT	LC
LEFT	LT
MONUMENT	MON
NATIONAL GEODETIC SURVEY	NGS
NUMBER	NO
OUTLOT	OL
PAGE	P
POINT OF TANGENCY	PT
PERMANENT LIMITED EASEMENT	PLE
POINT OF BEGINNING	POB
POINT OF CURVATURE	PC
POINT OF COMPOUND CURVE	PCC
POINT OF INTERSECTION	PI
PROPERTY LINE	PL
RECORDED AS (100')	(100')
REEL / IMAGE	R/I
REFERENCE LINE	R/L
REMAINING	REM
RESTRICTIVE DEVELOPMENT EASEMENT	RDE
RIGHT	RT
RIGHT OF WAY	R/W
SECTION	SEC
SEPTIC VENT	SEPV
SQUARE FEET	SF
STATE TRUNK HIGHWAY	STH
STATION	STA
TELEPHONE PEDESTAL	TP
TEMPORARY LIMITED EASEMENT	TLE
TRANSPORTATION PROJECT PLAT	TPP
UNITED STATES HIGHWAY	USH
VOLUME	V

**CURVE DATA**

LONG CHORD	LCH
LONG CHORD BEARING	LCB
RADIUS	R
DEGREE OF CURVE	D
CENTRAL ANGLE	Δ/DELTA
LENGTH OF CURVE	L
TANGENT	T
DIRECTION AHEAD	DA
DIRECTION BACK	DB

**CONVENTIONAL UTILITY SYMBOLS**

—W—	WATER
—G—	GAS
—T—	TELEPHONE
—OH—	OVERHEAD TRANSMISSION LINES
—E—	ELECTRIC
—TV—	CABLE TELEVISION
—FO—	FIBER OPTIC
—SAN—	SANITARY SEWER
—SS—	STORM SEWER

**CONVENTIONAL SYMBOLS**

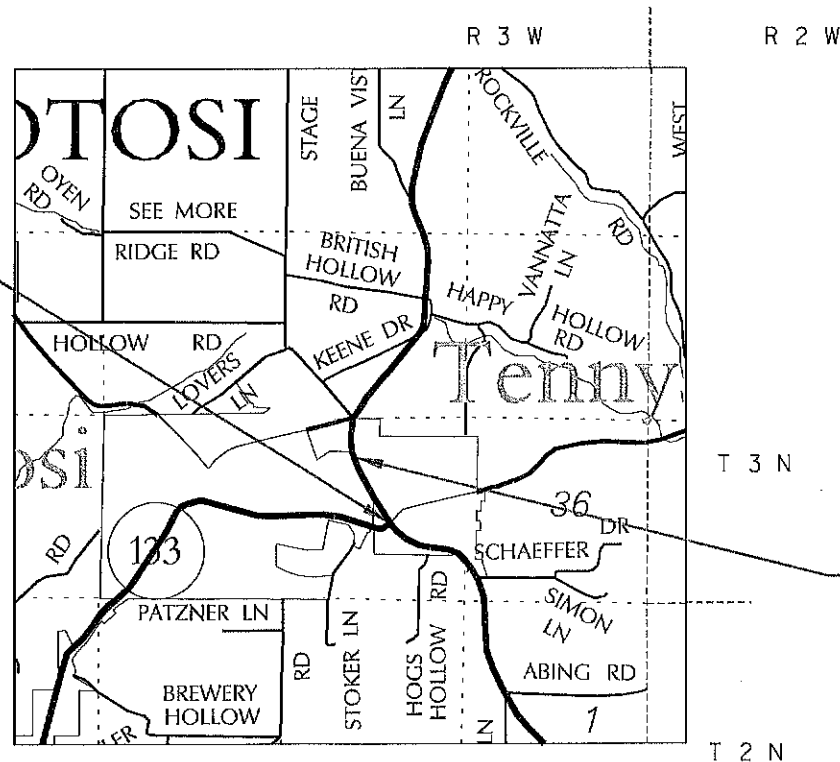
SECTION LINE	---	SECTION CORNER SYMBOL		R/W MONUMENT (TO BE SET)	●
QUARTER LINE	---	SECTION CORNER MONUMENT		NON-MONUMENTED R/W POINT	○
SIXTEENTH LINE	---	GEODETIC SURVEY MONUMENT		FOUND IRON PIN (1-INCH UNLESS NOTED)	IP
NEW REFERENCE LINE	---	SIXTEENTH CORNER MONUMENT		SIGN	
NEW R/W LINE	---	OFF-PREMISE SIGN		COMPENSABLE	
EXISTING R/W OR HE LINE	---	TELEPHONE POLE		NON-COMPENSABLE	
PROPERTY LINE	---	PEDESTAL (LABEL TYPE) (TV, TEL, ELEC, ETC.)		ACCESS RESTRICTED BY ACQUISITION	
LOT, TIE & OTHER MINOR LINES	---	ACCESS RESTRICTED (BY STATUTORY AUTHORITY)		NO ACCESS (BY STATUTORY AUTHORITY)	
SLOPE INTERCEPT	---	ACCESS RESTRICTED (BY PREVIOUS PROJECT OR CONTROL)		NO ACCESS (NEW HIGHWAY)	
CORPORATE LIMITS	---	NO ACCESS (NEW HIGHWAY)		PARCEL NUMBER (25)	
UNDERGROUND FACILITY (COMMUNICATIONS, ELECTRIC, ETC.)	---	PARCEL NUMBER (25)		UTILITY NUMBER (40)	
NEW R/W (FEE OR HE) (HATCHING VARIES BY OWNER)	---	PARALLEL OFFSETS			
TEMPORARY LIMITED EASEMENT AREA	---				
EASEMENT AREA (PERMANENT LIMITED OR RESTRICTED DEVELOPMENT)	---				
TRANSMISSION STRUCTURES	---				
BUILDING TO BE REMOVED					
BRIDGE					

R/W PROJECT NUMBER	1650-06-02	SHEET NUMBER	4.01	TOTAL SHEETS	2
FEDERAL PROJECT NUMBER	1650-06-02				
PLAT OF RIGHT-OF-WAY REQUIRED FOR <b>DICKEYVILLE - LANCASTER</b> <b>HICKORY LANE - ALONA LANE</b>					
USH 61		GRANT COUNTY			
CONSTRUCTION PROJECT NUMBER	1650-06-02				

**BEGIN PROJECT**  
STA. 806+00

Y= 465,420.638  
X= 824,555.902

2211.683 FEET NORTH AND 486.22 FEET EAST OF THE SOUTH 1/4 CORNER OF SECTION 35, T3N, R3W.



**END PROJECT**  
STA. 825+00

Y= 467,062.555  
X= 823,600.565

1470.997 FEET SOUTH AND 494.415 FEET WEST OF THE NORTH 1/4 CORNER OF SECTION 35, T3N, R3W.

**NOTES:**

POSITIONS SHOWN ON THIS PLAT ARE WISCONSIN COUNTY COORDINATE REFERENCE SYSTEM COORDINATES (WISCRS), GRANT COUNTY, NAD 83, (2011) IN US SURVEY FEET. VALUES SHOWN ARE GRID COORDINATES, GRID BEARINGS, AND GRID DISTANCES. GRID DISTANCES MAY BE USED AS GROUND DISTANCES.

RIGHT OF WAY MONUMENTS ARE 3/4" REBAR AND ARE PLACED PRIOR TO OR AT THE TIME OF LAND TITLE TRANSFER.

RIGHT OF WAY BOUNDARIES ARE DEFINED WITH COURSES OF THE PERIMETER OF THE HIGHWAY LANDS REFERENCED TO THE U.S. PUBLIC LAND SURVEY OR OTHER SURVEYS OF PUBLIC RECORD.

LAYOUT  
SCALE 0 0.5 MI.

TOTAL NET LENGTH OF CENTERLINE = 0.360 MI.

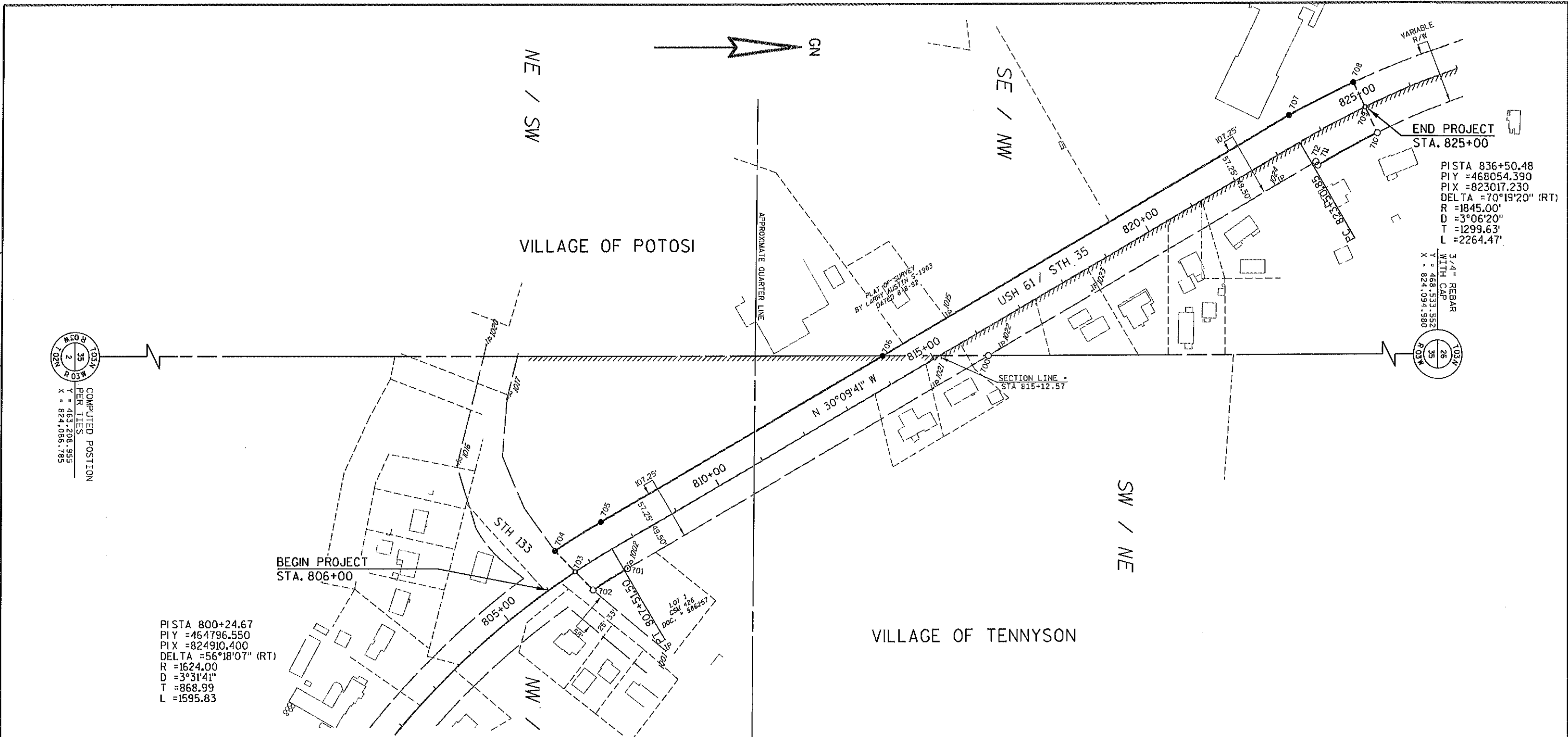
ORIGINAL PLAT PREPARED BY

JASON L. OANCE  
S-2688  
CHIPPEWA FALLS, WI  
LAND SURVEYOR

JASON L. OANCE, PROFESSIONAL LAND SURVEYOR S-2688, HEREBY CERTIFY THAT THIS SURVEY IS CORRECT AND ACCURATE TO THE BEST OF MY KNOWLEDGE AND BELIEF.

10-23-2019  
(Date) (Signature)

REVISION DATE
---------------



END PROJECT  
STA. 825+00

PISTA 836+50.48  
PI Y = 468054.390  
PIX = 823017.230  
DELTA = 70°19'20" (RT)  
R = 1845.00'  
D = 3°06'20"  
T = 1299.63'  
L = 2264.47'

BEGIN PROJECT  
STA. 806+00

PISTA 800+24.67  
PI Y = 464796.550  
PIX = 824910.400  
DELTA = 56°18'07" (RT)  
R = 1624.00'  
D = 3°31'41"  
T = 868.99  
L = 1595.83

COMPUTED POSITION  
PER TIES

Y = 463,208.985  
X = 824,080.785

3/4" REBAR  
WITH CAP  
Y = 468,533.552  
X = 824,094.580

EXISTING MONUMENTS			
POINT	NORTHING	EASTING	DESCRIPTION
1001	466654.654	824677.301	3/4" REBAR
1002	465579.199	824512.814	3/4" REBAR
1015	466219.457	824016.362	1 1/4" REBAR (DISTURBED)
1016	465236.470	824307.052	3/4" REBAR WITH CAP
1017	465336.827	824174.977	3/4" REBAR (DISTURBED)
1020	465294.854	824066.608	3/4" REBAR WITH CAP
1021	466194.160	824155.885	1" IRON PIPE
1022	466326.366	824078.624	1" IRON PIPE (DISTURBED)
1023	466512.111	823963.743	1" IRON PIPE (DISTURBED)
1024	466888.841	823752.029	1 1/4" IRON PIPE

R/W COORDINATES		
POINT	NORTHING	EASTING
700	466304.379	824091.549
701	465579.199	824512.814
702	465509.573	824555.696
703	465474.114	824519.336
704	465433.339	824477.525
705	465525.327	824420.076
706	466091.429	824091.221
707	466909.175	823616.184
708	467039.113	823551.495
709	467082.555	823600.565
710	467087.270	823652.302
711	466967.192	823716.055
712	466963.048	823708.922

COURSE TABLE		
COURSE	BEARING	DISTANCE
700-701	S30°09'10"E	838.66'
701-702	SEE CURVE DATA	
702-703	S45°43'07"W	50.79'
703-704	S45°43'07"W	58.40'
704-705	SEE CURVE DATA	
705-706	N30°09'10"W	654.69'
706-707	N30°09'10"W	945.71'
707-708	SEE CURVE DATA	
708-709	N64°27'55"E	54.38'
709-710	N64°27'55"E	57.34'
710-711	SEE CURVE DATA	
711-712	S59°50'50"W	8.25'
712-700	S30°09'10"E	761.74'

R/W STATION OUT TABLE		
POINT	STATION	OFFSET
700	815+97.62	49.60' RT
701	807+58.96	49.47' RT
702	806+74.84	49.81' RT
703	806+64.79	0.00'
704	806+53.96	57.35' LT
705	807+58.98	57.78' LT
706	814+13.67	57.68' LT
707	823+59.12	57.55' LT
708	825+00.00	54.38' LT
709	825+00.00	0.00'
710	825+00.00	57.34' RT
711	823+59.64	57.94' RT
712	823+59.60	49.69' RT

CURVE DATA TABLE						
CURVE	ARC LENGTH	RADIUS	DEGREE	DELTA	CHORD BEARING	CHORD DISTANCE
701-702	81.78'	1587.60' L	3°36'32"	2°57'05"	S31°37'43"E	81.77'
704-705	108.47'	1694.85' R	3°22'50"	3°40'01"	N31°59'10"W	108.45'
707-708	145.19'	1780.75' R	3°13'03"	4°40'17"	N26°27'57"W	145.15'
710-711	135.98'	1892.12' L	3°01'41"	4°07'04"	S27°57'54"E	135.95'

EXISTING RIGHT OF WAY WAS BASED ON THE FOLLOWING:

USH 61 / 35  
- DIVISION JOB NO. 9453  
- PLAT OF SURVEY BY LARRY ALUSTIN  
- CSM NO. 426

STH 133  
- RW PROJECT 5205-03-22

CTH 0  
- CSM NO. 426

REVISION DATE	DATE	SCALE, FEET 0 100 200	HWY: USH 61	STATE R/W PROJECT NUMBER 1650-06-02	PLAT SHEET NO: 4.02
	GRID FACTOR N/A		COUNTY: GRANT	CONSTRUCTION PROJECT NUMBER 1650-06-02	PS&E SHEET