

CURVE DATA ("NB")
 P.I. 1285°SB+93.81
 X 1816591.24
 Y 1816591.24
 Δ = 35°49'54"
 R = 200.00'
 L = 617.43'
 P.C. = 1194.39'
 P.T. = 1909.86'
 P.C. = 1279°SB+76.35
 P.T. = 1291°SB+70.75
 S.E. = 0.030 (EXISTING)
 S.E. = 0.055 (PROPOSED)

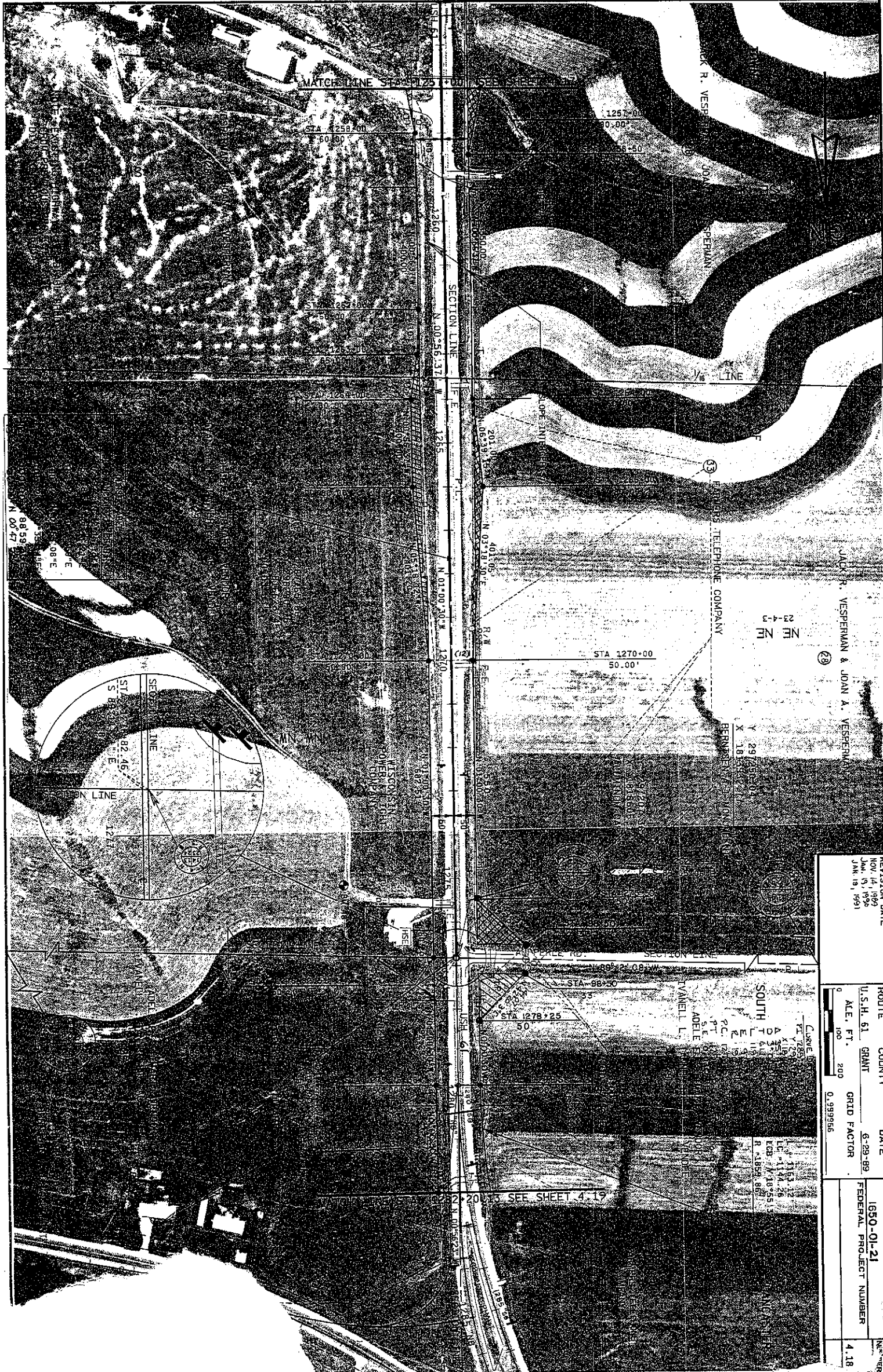
REVISION DATE	ROUTE	COUNTY	DATE	R/W PROJECT NUMBER	SHEET NUMBER
NOV 14, 1969 JAN 19, 1990 JAN 18, 1991	U.S.H. 81	GRANT	6-29-69	1650-01-21	4.19
	SCALE, FT.		GRID FACTOR	FEDERAL PROJECT NUMBER	
	200		0.999966		

CURVE DATA ("NM")
 P.I. 11°NM+81.35
 X 1816719.10
 Y 298115.04
 BERRITSEN A-1 MONUMENT
 X 1816738.70
 Y 298882.57
 Δ = 34°48'23.2"
 R = 192.25'
 L = 182.25'
 P.C. = 300.00'
 P.T. = 10°NM+87.32
 P.I. 12°NM+69.57
 S.E. R.C.

Grant County Home and Hospital

REV. DATE: 06-12-79
 REGULATOR: CDH

EVELS ON 12 3 4 5 6 7 8 9 10 11 12 13 14 15 16 17 18 19 20 21 22 23 24 25 26 27 28 29 30 31 32 33 34 35 36 37 38 39 40 41 42 43 44 45 46 47 48 49 50 51 52 53 54 55 56 57 58 59 60 61 62 63

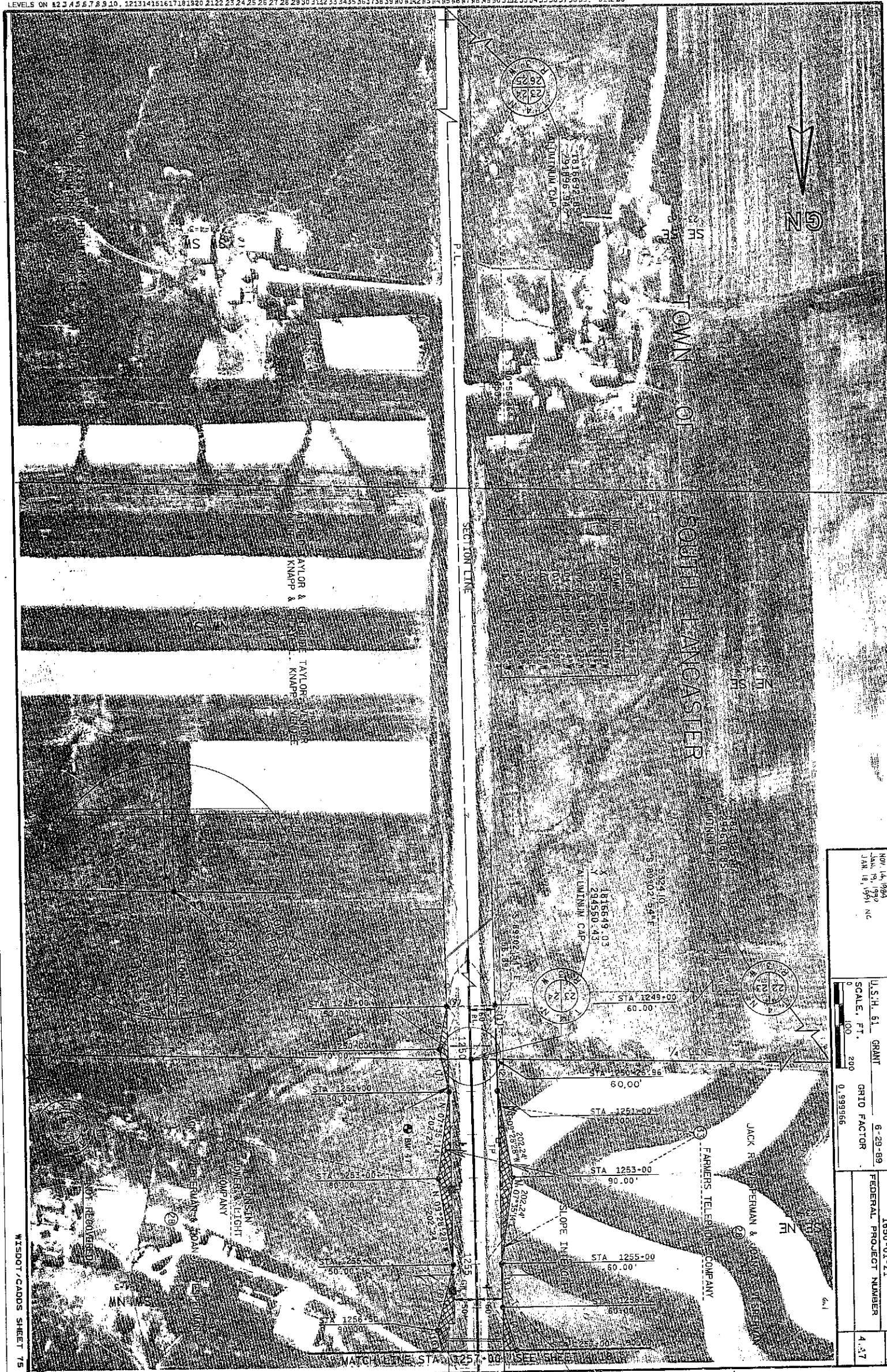


REVISION DATE	NOV. 14, 1989 JAN. 15, 1991 JAN. 18, 1991
ROUTE	U.S.H. 61
COUNTY	GRANT
DATE	6-29-89
A.E. FT.	100
GRID FACTOR	0.999955
R.W. PROJECT NUMBER	1850-01-21
FEDERAL PROJECT NUMBER	4.18
SHEET NUMBER	4.18

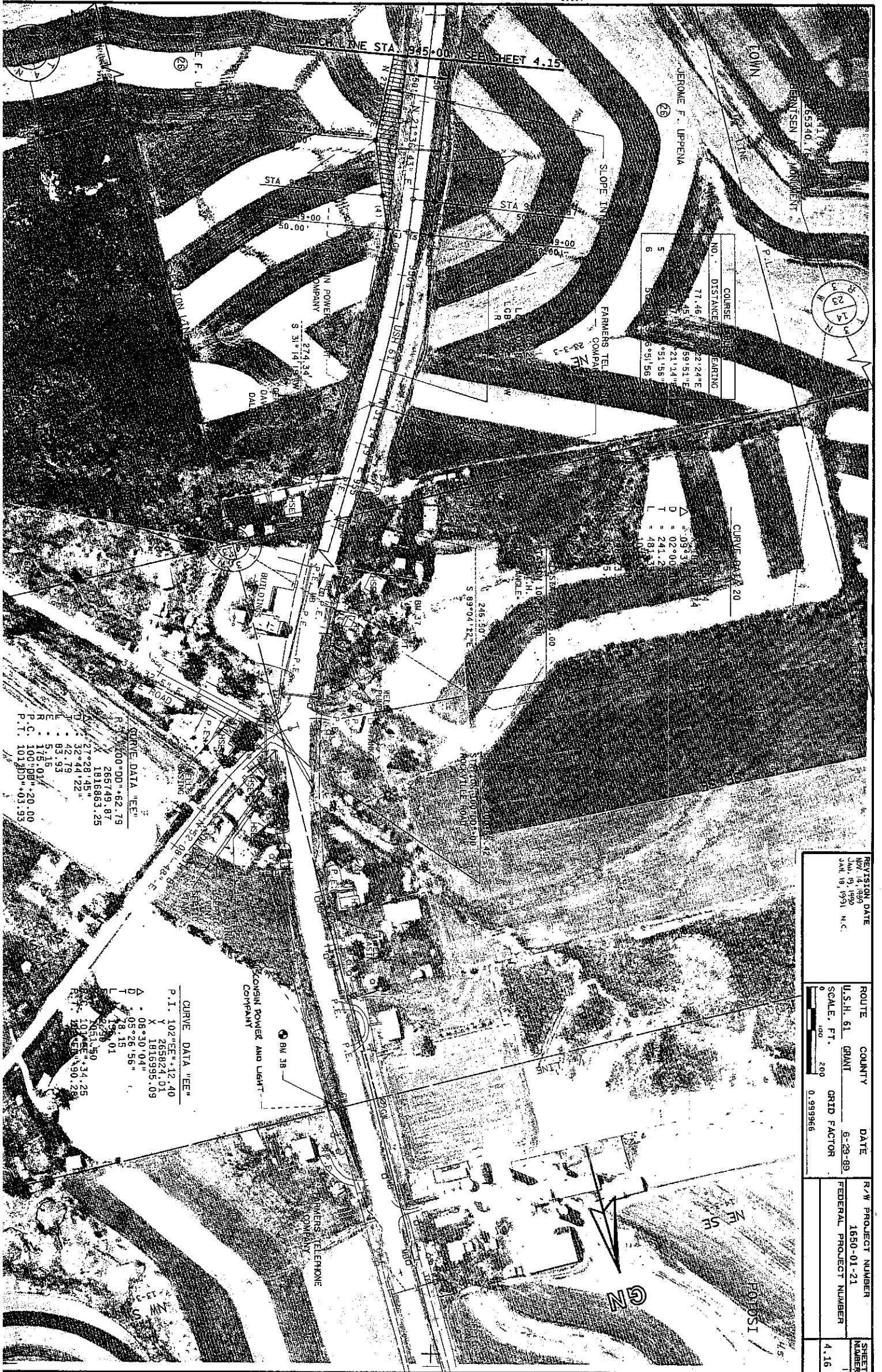
Curve Data
 P.C. 57+00
 P.T. 58+00
 L.C. 57+50
 L. 100
 EOB 58+00
 R. 1850.85

SEE SHEET 4.19

LEVELS ON 12.3 4.5 6.7 8.9 10, 121314151617181920 2122 23 24 25 26 27 28 29 30 3132 333435 363738 39 40 4142 43 44 45 46 47 48 49 50 5152 53 54 55 56 57 58 59, BT 2.63



REVISION DATE	NOV 14, 1984 JAN 19, 1989 JAN 18, 1991 NC	ROUTE	COUNTY	DATE	R/W PROJECT NUMBER	SHEET NUMBER
		U.S.H. 51	GRANT	6-29-89	1650-01-21	4.17
		SCALE, FT.	200	GRID FACTOR		
				0.999966		



NO.	COURSE	DISTANCE	BEARING
1	77.46'	22.24"E	59.53"E
2	45.17'	21.14"E	51.55"E
3	50.00'	21.14"E	51.55"E
4	50.00'	21.14"E	51.55"E
5	50.00'	21.14"E	51.55"E
6	50.00'	21.14"E	51.55"E

CURVE DATA 20

Δ	= 09°33'
D	= 02°00'
T	= 241.2'
L	= 481.5'
STATION	100.00
STATION	100.00
STATION	100.00

CURVE DATA "EE"

P.I.	102°00'00" DD	+62.79
X	265749.87	
Y	1816863.25	
Δ	08°30'04"	
T	115.01	
L	230.02	
P.C.	100°08'20.00	
P.T.	101°00'03.93	

CURVE DATA "EE"

P.I.	102°00'00" DD	+62.79
X	265749.87	
Y	1816863.25	
Δ	08°30'04"	
T	115.01	
L	230.02	
P.C.	100°08'20.00	
P.T.	101°00'03.93	

REVISION DATE	ROUTE	COUNTY	DATE	R/W PROJECT NUMBER	SHEET NUMBER
NOV 14, 1989	U.S.H. 61	GRANT	8-29-89	1650-01-21	1
JAN 19, 1991 N.C.	SCALE, FT.	GRID FACTOR		FEDERAL PROJECT NUMBER	4.16
	1" = 200'	0.999966			