

### CONVENTIONAL SIGNS

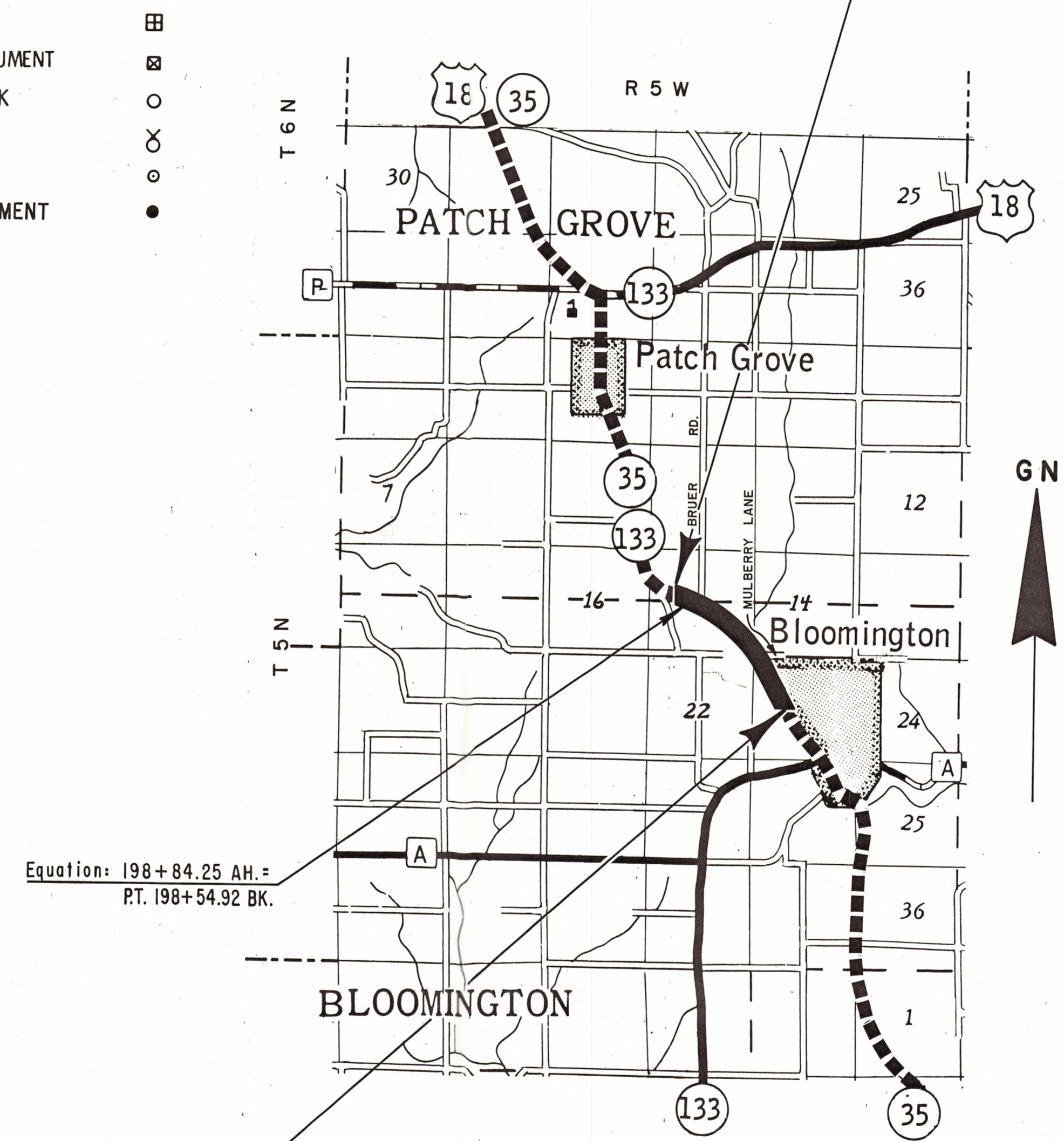
STATE LINE	— — — — —	*HIGHWAY HIGHWAY SEPARATION		CEMETERY		
COUNTY LINE	— — — — —	HIGHWAY OVERPASS		FOUNDATION		
TOWNSHIP AND RANGE LINES	— — — — —	*RAIL LINE OVERPASS		GAS PUMP ISLAND		
SECTION LINE	— — — — —	ALL OTHER BRIDGES		BUILDING		
QUARTER LINE	— — — — —	STREAM OR RIVER		IRON PIN		
SIXTEENTH LINE	— — — — —	LAKE		POWER POLE		
NEW CENTERLINE		CATTLE PASS		TELEPHONE POLE		
NEW R/W LINE	— — — — —	RELOCATED STREAM OR RIVER		RAIL LINE		
OLD R/W LINE	— — — — —	TRAVELED WAY (Shown only in area of Frontage Roads, Interchanges or Dual Lanes)		TRANSMISSION TOWER AND LINE		
PROPERTY LINE	P. L. +00.0	NO ACCESS		UNDERGROUND CABLE MARKER		
CORPORATE LIMITS	(NAME) / / / / /	STONE MONUMENT		WELL		
SLOPE INTERCEPTS	slope intercept	SEPTIC TANK		WINDMILL		
LOT, TIE AND OTHER MINOR DASHED LINES	— — — — —	R/W POINT		R/W MONUMENT		
UNDERGROUND FACILITY (POWER, TELEPHONE, TELEGRAPH, GAS, ETC.)	(Name or Type)					
NO ACCESS (ACQUISITION)						
*LIMITED HIGHWAY EASEMENT						

\* (Shading omitted on Aerial Half-tones)

### STANDARD ABBREVIATIONS

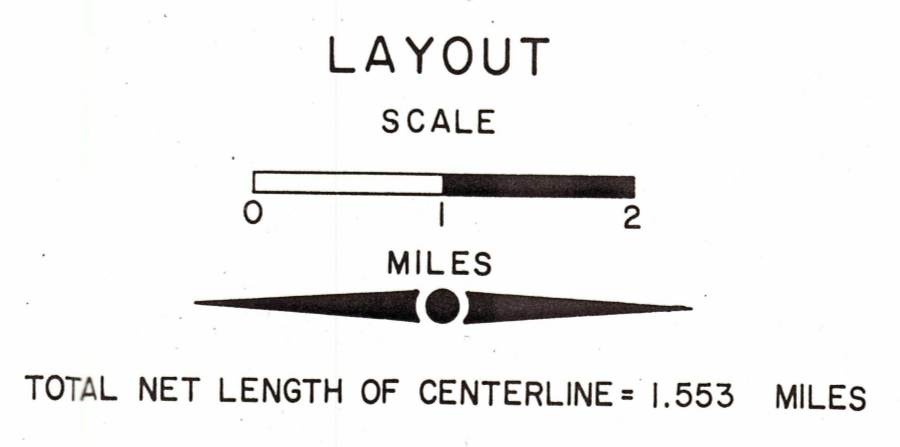
AC.	ACRES	AH.	AHEAD
BK.	BACK	B.	BARN
G.	GARAGE	H.	HOUSE
L.H.E.	LIMITED HIGHWAY EASEMENT	P.L.	PROPERTY LINE
REM.	REMAINING	TEMP.	TEMPORARY

END RELOCATION ORDER PROJECT 5580-03-22  
 FEDERAL PROJECT F 0151(3)  
 STA. 215+70.40 =  
 Sta. 241+00 - 30' RT. ±, Project No. 9346  
 Y 333,015.72  
 X 1,743,686.48  
 2,860.01' N. & 1,299.12' W. of the S. 1/4 Cor.,  
 Sec. 15, T 5 N, R 5 W.



Equation:  $198 + 84.25 \text{ AH} =$   
 PT.  $198 + 54.92 \text{ BK.}$

BEGIN RELOCATION ORDER PROJECT 5580-03-22  
 FEDERAL PROJECT F 0151(3)  
 STA. 133+42.15 =  
 Sta. 157+48 - 14' RT. ±, Project No. 9346  
 Y 327,464.33  
 X 1,748,919.35  
 2,680.16' S. & 1,272.49' E. of the S.W. Cor.,  
 Sec. 14, T 5 N, R 5 W.

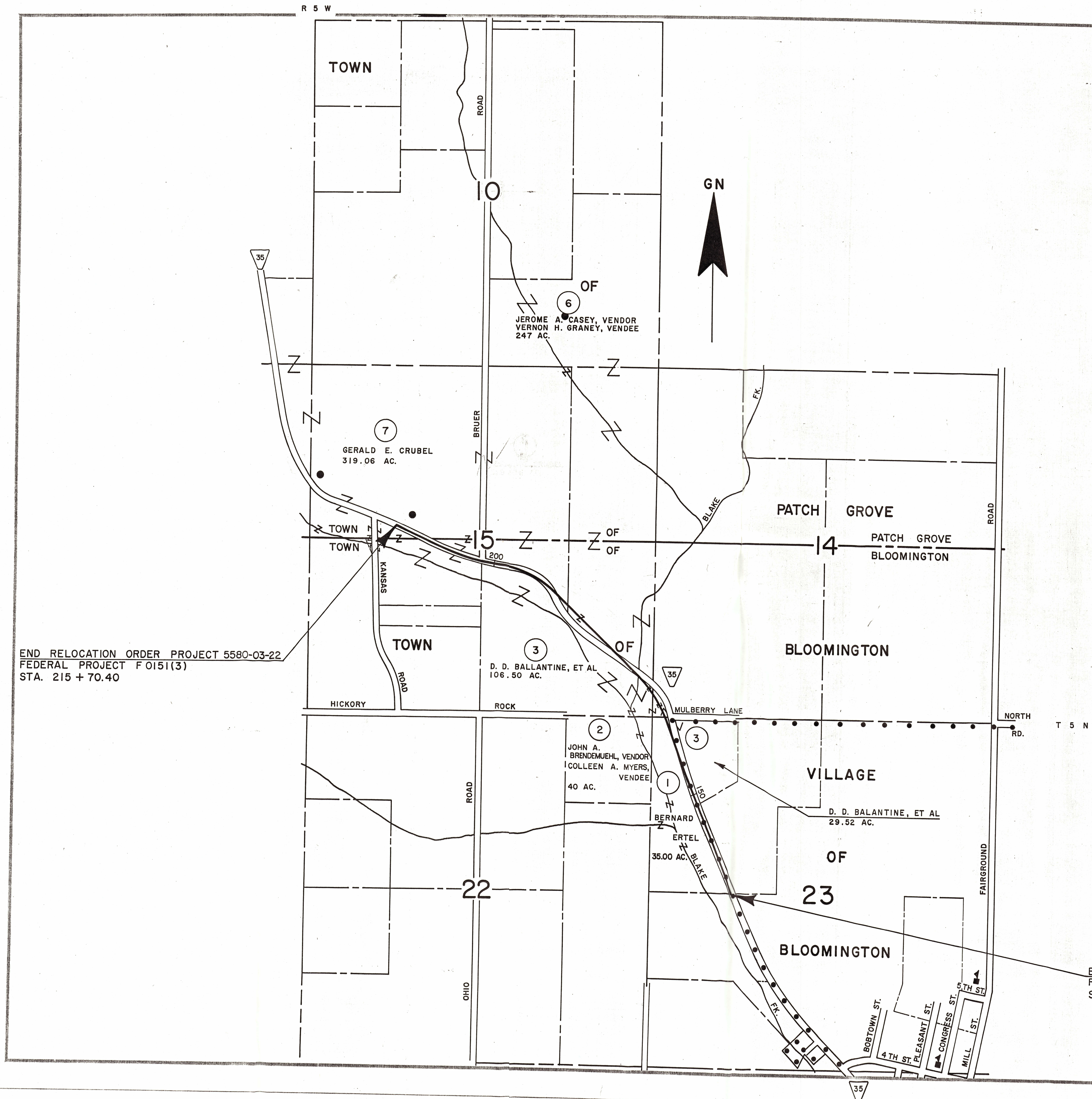


All coordinates shown on this plat are referenced to the WISCONSIN COORDINATE SYSTEM SOUTH ZONE.

R/W PROJECT NUMBER	5580-03-22	SHEET NUMBER	4.0	TOTAL SHEETS	6
FEDERAL PROJECT NUMBER	F 0151(3)				
PLAT OF RIGHT OF WAY REQUIRED FOR 5580-01-02					
<b>BLOOMINGTON — U.S.H. 18 ROAD</b> (CASEY BRIDGE & APPROACHES)					
S.T.H. 35	GRANT COUNTY				
CONSTRUCTION PROJECT NUMBER					
PARCEL NO.	SHEET NO.	OWNER			

1	4.2	Bernard Ertel
2	4.2	John A. Brendemuehl, Vendor
3	4.2, 4.3 & 4.4	Colleen A. Myers, Vendee, D. D. Ballantine, et al
4	4.3, 4.4 & 4.5	Peoples Telephone of Mt. Hope
5	4.3	Jerome A. Casey, Vendor
6	4.3, 4.4 & 4.5	Vernon H. Graney, Vendee
7	4.3, 4.4 & 4.5	Gerald E. Crubel

REVISION DATE	STATE OF WISCONSIN DEPARTMENT OF TRANSPORTATION DIVISION OF HIGHWAYS
12/12/79	APPROVED: Date <u>6/24/78</u> <i>Ronald R. Fisher</i> District Engineer
	APPROVED: Date _____ Chief of Facilities Development
	APPROVED: Date <u>7-19-78</u> <i>B. J. Muller</i> Director, Bureau of Right of Way
	U.S. DEPARTMENT OF TRANSPORTATION FEDERAL HIGHWAY ADMINISTRATION REGION 5 WISCONSIN DIVISION
	APPROVED: Date _____ Division Engineer



END RELOCATION ORDER PROJECT 5580-03-22  
 FEDERAL PROJECT F 0151(3)  
 STA. 215 + 70.40

BEGIN RELOCATION ORDER PROJECT 5580-03-22  
 FEDERAL PROJECT F 0151(3)  
 STA. 133 + 42.15

REVISION DATE	R/W PROJECT NUMBER	SHEET NUMBER
12/12/79	5580-03-22	4.1
FEDERAL PROJECT NUMBER		
F 0151(3)		
PLAT OF RIGHT OF WAY REQUIRED FOR 5580-01-02		
<b>BLOOMINGTON — U.S.H. 18 ROAD</b>		
(CASEY BRIDGE & APPROACHES)		
S.T.H. 35	GRANT COUNTY	DATE
		JUNE 26, 1978
NOT TO SCALE		
CONSTRUCTION PROJECT NUMBER		
5580-3-72		4

NOTE:  
 ACREAGE SHOWN ON ABUTTING  
 PROPERTIES INCLUDES AREA IN  
 EXISTING HIGHWAY RIGHT OF WAY.

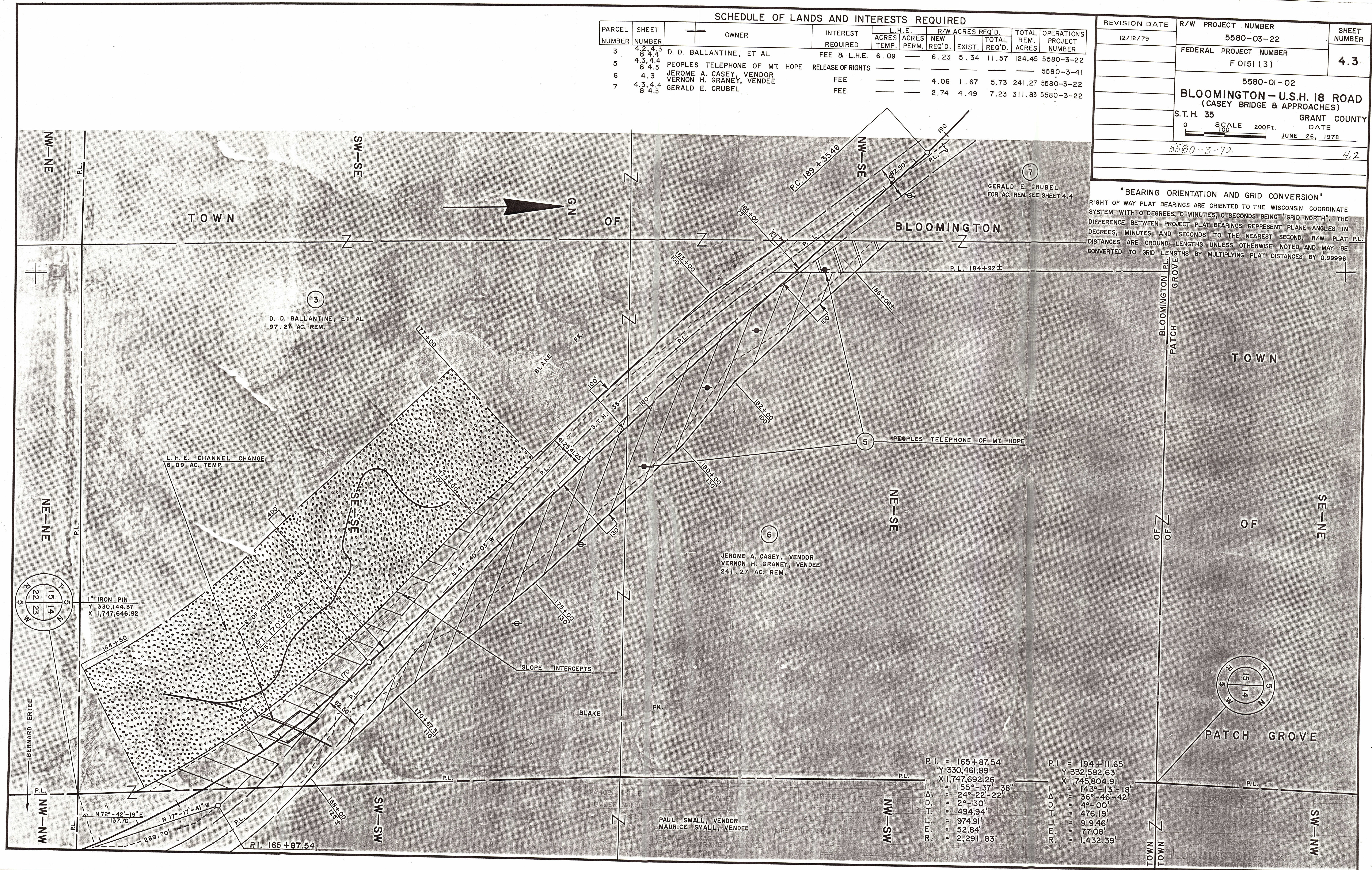
LEGEND  
 ● BUILDINGS  
 ▲ SCHOOL

SCHEDULE OF LANDS AND INTERESTS REQUIRED

PARCEL NUMBER	SHEET NUMBER	OWNER	INTEREST REQUIRED	L.H.E.		R/W ACRES REQ'D.			TOTAL REM. ACRES	OPERATIONS PROJECT NUMBER
				ACRES TEMP.	ACRES PERM.	NEW REQ'D.	EXIST.	TOTAL REQ'D.		
3	4.2, 4.3, 4.4, 4.5	D. D. BALLANTINE, ET AL	FEE & L.H.E.	6.09	—	6.23	5.34	11.57	124.45	5580-3-22
5	4.3, 4.4, 4.5	PEOPLES TELEPHONE OF MT. HOPE	RELEASE OF RIGHTS	—	—	—	—	—	—	5580-3-41
6	4.3	JEROME A. CASEY, VENDOR VERNON H. GRANEY, VENDEE	FEE	—	—	4.06	1.67	5.73	241.27	5580-3-22
7	4.3, 4.4, 4.5	GERALD E. CRUBEL	FEE	—	—	2.74	4.49	7.23	311.83	5580-3-22

REVISION DATE	R/W PROJECT NUMBER	SHEET NUMBER
12/12/79	5580-03-22	4.3
	FEDERAL PROJECT NUMBER	
	F 0151 (3)	
	5580-01-02	
	<b>BLOOMINGTON - U.S.H. 18 ROAD</b>	
	(CASEY BRIDGE & APPROACHES)	
	S.T.H. 35	GRANT COUNTY
	SCALE 200 FT.	DATE
	0 100 200	JUNE 26, 1978
	5580-3-72	4.2

"BEARING ORIENTATION AND GRID CONVERSION"  
 RIGHT OF WAY PLAT BEARINGS ARE ORIENTED TO THE WISCONSIN COORDINATE SYSTEM WITH 0 DEGREES, 0 MINUTES, 0 SECONDS BEING "GRID NORTH". THE DIFFERENCE BETWEEN PROJECT PLAT BEARINGS REPRESENT PLANE ANGLES IN DEGREES, MINUTES AND SECONDS TO THE NEAREST SECOND. R/W PLAT PL. DISTANCES ARE GROUND LENGTHS UNLESS OTHERWISE NOTED AND MAY BE CONVERTED TO GRID LENGTHS BY MULTIPLYING PLAT DISTANCES BY 0.99996



PARCEL NUMBER	SHEET NUMBER	OWNER	INTEREST REQUIRED	ACRES TEMP.	ACRES PERM.	NEW REQ'D.	EXIST.	TOTAL REQ'D.	TOTAL REM. ACRES	OPERATIONS PROJECT NUMBER
3	4.2, 4.3, 4.4, 4.5	D. D. BALLANTINE, ET AL	FEE & L.H.E.	6.09	—	6.23	5.34	11.57	124.45	5580-3-22
5	4.3, 4.4, 4.5	PEOPLES TELEPHONE OF MT. HOPE	RELEASE OF RIGHTS	—	—	—	—	—	—	5580-3-41
6	4.3	JEROME A. CASEY, VENDOR VERNON H. GRANEY, VENDEE	FEE	—	—	4.06	1.67	5.73	241.27	5580-3-22
7	4.3, 4.4, 4.5	GERALD E. CRUBEL	FEE	—	—	2.74	4.49	7.23	311.83	5580-3-22

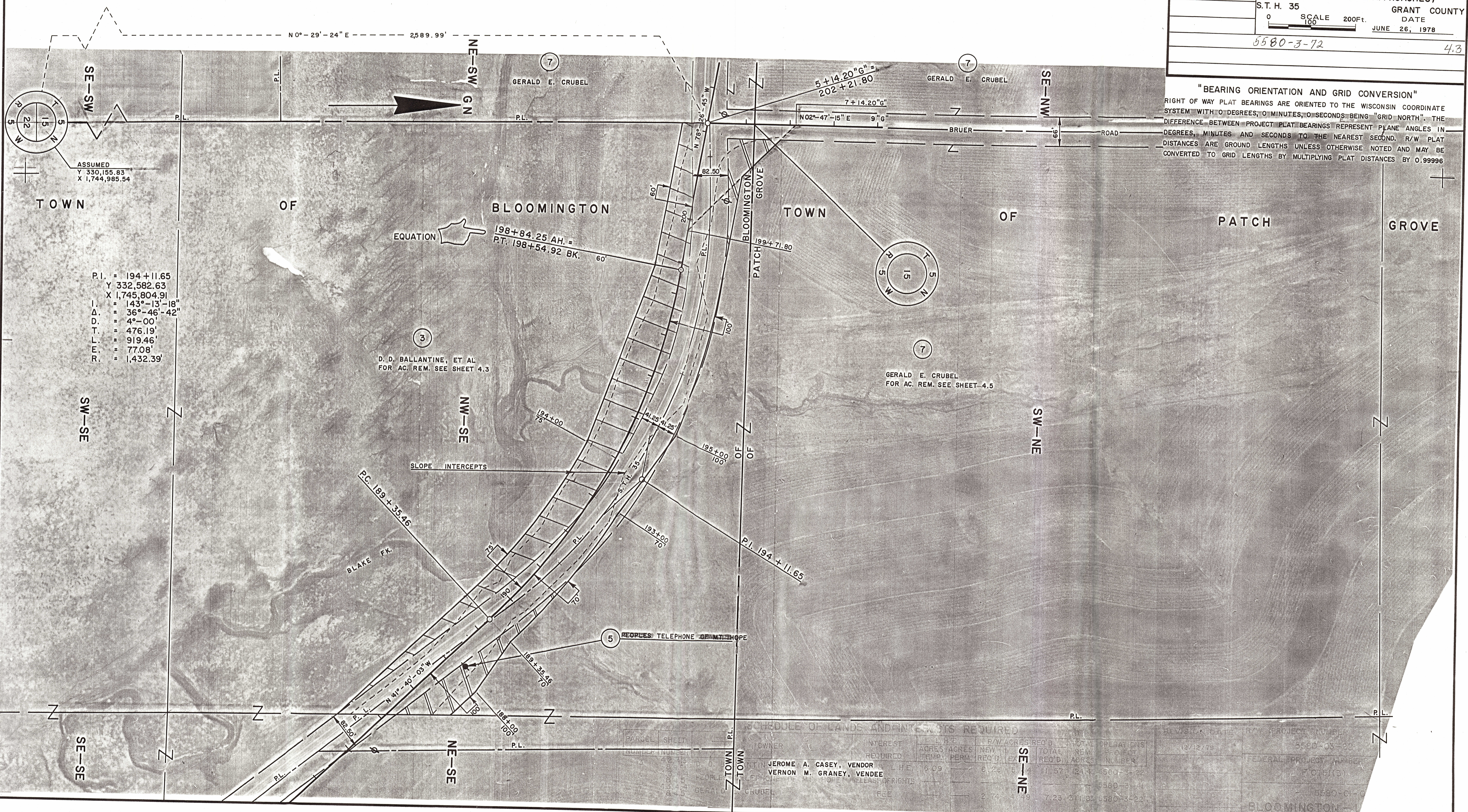
P.I. = 165+87.54  
 Y 330,461.89  
 X 1,747,692.26  
 Δ = 155°-37'-38"  
 Δ = 24°-22'-22"  
 D = 2°-30"  
 T = 494.94'  
 L = 974.91'  
 E = 52.84'  
 R = 2,291.83'

P.I. = 194+11.65  
 Y 332,582.63  
 X 1,745,804.91  
 Δ = 143°-13'-18"  
 Δ = 36°-46'-42"  
 D = 4°-00"  
 T = 476.19'  
 L = 919.46'  
 E = 77.08'  
 R = 1,432.39'

SCHEDULE OF LANDS AND INTERESTS REQUIRED

PARCEL NUMBER	SHEET NUMBER	OWNER	INTEREST REQUIRED	L.H.E.		R/W ACRES REQ'D.		TOTAL REM. ACRES	OPERATIONS PROJECT NUMBER
				ACRES TEMP.	ACRES PERM.	NEW REQ'D.	EXIST.		
3	4.2, 4.3 8.4, 4.4	D. D. BALLANTINE, ET AL	FEE & L.H.E.	6.09		6.23	5.34	11.57	124.45 5580-3-22
5	4.3, 4.4 8.4, 4.5	PEOPLES TELEPHONE OF MT. HOPE	RELEASE OF RIGHTS						5580-3-41
7	4.3, 4.4 8.4, 4.5	GERALD E. CRUBEL	FEE			2.74	4.49	7.23	311.83 5580-3-22

REVISION DATE	R/W PROJECT NUMBER	SHEET NUMBER
12/12/79	5580-03-22	4.4
FEDERAL PROJECT NUMBER		
FO151(3)		
5580-01-02		
BLOOMINGTON - U.S.H. 18 ROAD		
(CASEY BRIDGE & APPROACHES)		
S.T.H. 35	GRANT COUNTY	
SCALE 200ft.	DATE	
0 100	JUNE 26, 1978	



"BEARING ORIENTATION AND GRID CONVERSION"  
 RIGHT OF WAY PLAT BEARINGS ARE ORIENTED TO THE WISCONSIN COORDINATE SYSTEM WITH 0 DEGREES, 0 MINUTES, 0 SECONDS BEING "GRID NORTH". THE DIFFERENCE BETWEEN PROJECT PLAT BEARINGS REPRESENT PLANE ANGLES IN DEGREES, MINUTES AND SECONDS TO THE NEAREST SECOND. R/W PLAT DISTANCES ARE GROUND LENGTHS UNLESS OTHERWISE NOTED AND MAY BE CONVERTED TO GRID LENGTHS BY MULTIPLYING PLAT DISTANCES BY 0.99996

ASSUMED  
 Y 330,155.83  
 X 1,744,985.54

TOWN OF BLOOMINGTON

P.I. = 194+11.65  
 Y 332,582.63  
 X 1,745,804.91

Δ = 143°-13'-18"  
 Δ = 36°-46'-42"  
 Δ = 4°-00'  
 Δ = 476.19'  
 Δ = 919.46'  
 Δ = 77.08'  
 Δ = 1,432.39'

PARCEL NUMBER	SHEET NUMBER	OWNER	INTEREST REQUIRED	L.H.E.		R/W ACRES REQ'D.		TOTAL REM. ACRES	OPERATIONS PROJECT NUMBER
				ACRES TEMP.	ACRES PERM.	NEW REQ'D.	EXIST.		
3	4.2, 4.3 8.4, 4.4	D. D. BALLANTINE, ET AL	FEE & L.H.E.	6.09		6.23	5.34	11.57	124.45 5580-3-22
5	4.3, 4.4 8.4, 4.5	PEOPLES TELEPHONE OF MT. HOPE	RELEASE OF RIGHTS						5580-3-41
7	4.3, 4.4 8.4, 4.5	GERALD E. CRUBEL	FEE			2.74	4.49	7.23	311.83 5580-3-22

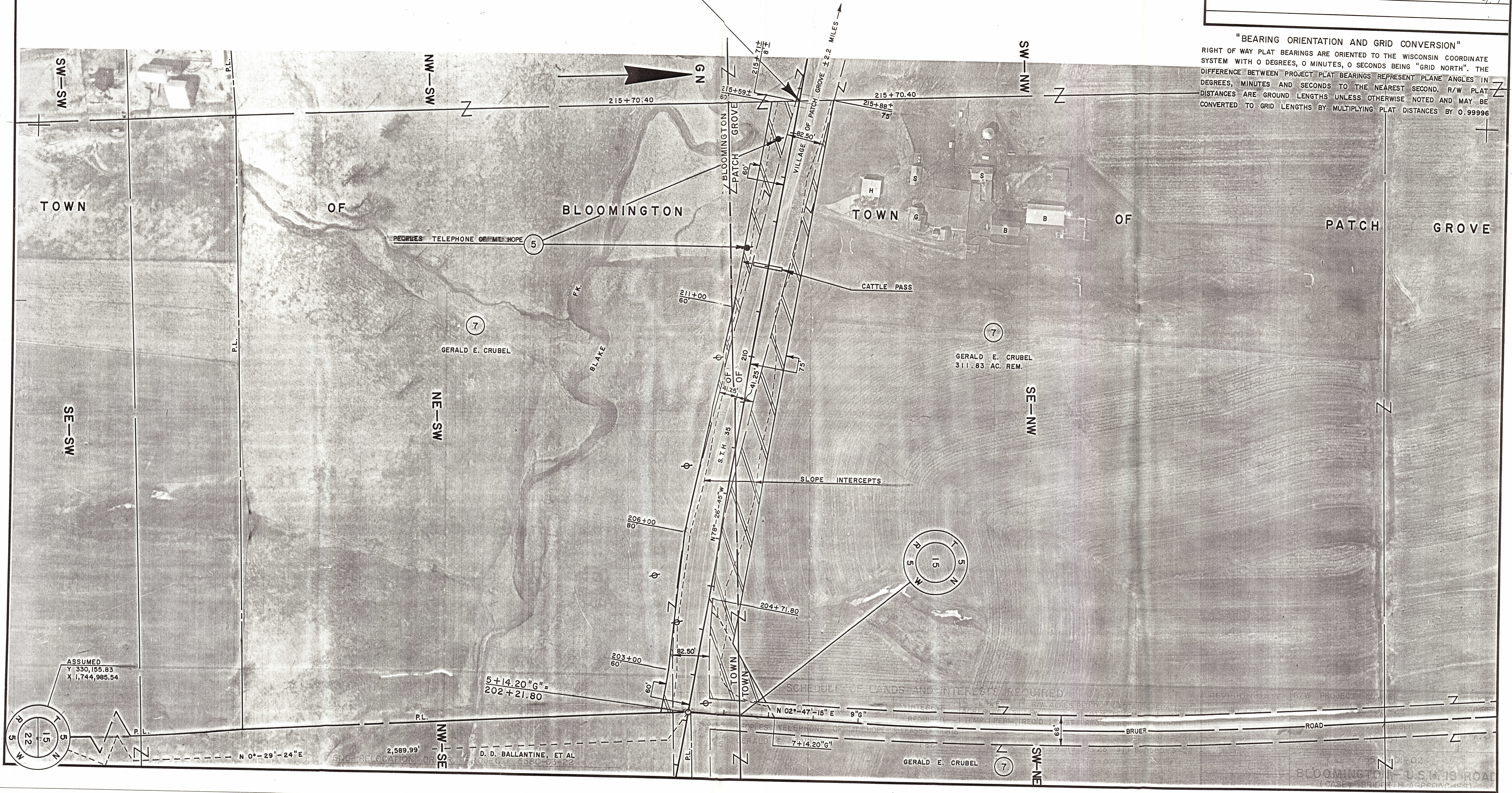
SCHEDULE OF LANDS AND INTERESTS REQUIRED

PARCEL NUMBER	SHEET NUMBER	OWNER	INTEREST REQUIRED	L.H.E.		R/W ACRES REQ'D.		TOTAL REM. ACRES	OPERATIONS PROJECT NUMBER
				ACRES	TEMP.	NEW	EXIST.		
5	4.3, 4.4	PEOPLES TELEPHONE OF MT. HOPE	RELEASE OF RIGHTS						5580-3-41
7	4.3, 4.4, 8.4, 8.5	GERALD E. CRUBEL	FEE			2.74	4.49	7.23	311.83 5580-3-22

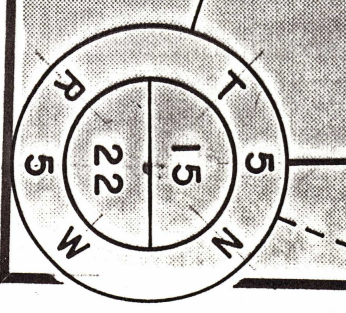
REVISION DATE	R/W PROJECT NUMBER	SHEET NUMBER
12/12/79	5580-03-22	4.5
	FEDERAL PROJECT NUMBER	
	F 0151(3)	
	5580-01-02	
	<b>BLOOMINGTON - U.S.H. 18 ROAD</b>	
	(CASEY BRIDGE & APPROACHES)	
	S.T.H. 35	GRANT COUNTY
	SCALE 200 Ft.	DATE
	100	JUNE 26, 1978
	5580-3-72	4.4

END RELOCATION ORDER, PROJECT 5580-03-22  
 FEDERAL PROJECT F 0151(3)  
 STA. 215 + 70.40 =  
 STA. 241 + 00 - 30' RT. ± PROJECT NO. 9346  
 Y 333,015.72  
 X 1,743,686.48  
 2,860.01' N. & 1,299.12' W. OF THE S. 1/4 COR.  
 SEC. 15, T 5 N, R 5 W

"BEARING ORIENTATION AND GRID CONVERSION"  
 RIGHT OF WAY PLAT BEARINGS ARE ORIENTED TO THE WISCONSIN COORDINATE SYSTEM WITH 0 DEGREES, 0 MINUTES, 0 SECONDS BEING "GRID NORTH". THE DIFFERENCE BETWEEN PROJECT PLAT BEARINGS REPRESENT PLANE ANGLES IN DEGREES, MINUTES AND SECONDS TO THE NEAREST SECOND. R/W PLAT DISTANCES ARE GROUND LENGTHS UNLESS OTHERWISE NOTED AND MAY BE CONVERTED TO GRID LENGTHS BY MULTIPLYING PLAT DISTANCES BY 0.99996



ASSUMED  
 Y 330,155.83  
 X 1,744,985.54



N 0°-29'-24" E

2,589.99' D. D. BALLANTINE, ET AL