

### CONVENTIONAL SIGNS

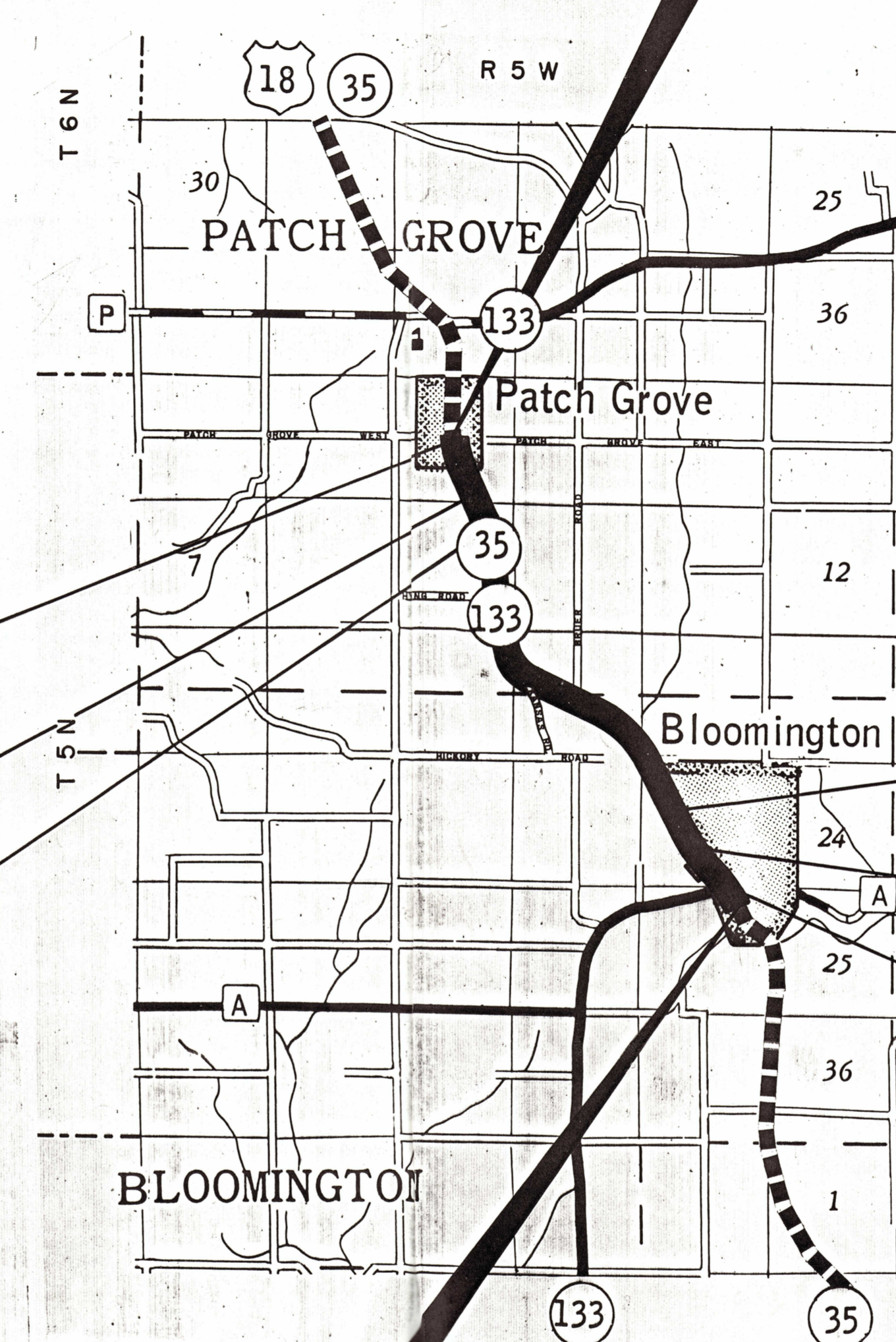
STATE LINE	---	*HIGHWAY HIGHWAY SEPARATION		CEMETERY	
COUNTY LINE	---	HIGHWAY OVERPASS		FOUNDATION	
TOWNSHIP AND RANGE LINES	---	*RAIL LINE OVERPASS		GAS PUMP ISLAND	
SECTION LINE	---	ALL OTHER BRIDGES		BUILDING	
QUARTER LINE	---	STREAM OR RIVER		IRON PIN	
SIXTEENTH LINE	---	LAKE		POWER POLE	
NEW CENTERLINE		CATTLE PASS		TELEPHONE POLE	
NEW R/W LINE		RELOCATED STREAM OR RIVER		RAIL LINE	
OLD R/W LINE		*TRAVELED WAY		TRANSMISSION TOWER AND LINE	
PROPERTY LINE	P.L. +00.0	(Shown only in area of Frontage Roads, Interchanges or Dual Lanes)		WELL	
CORPORATE LIMITS	(NAME)////	NO ACCESS		STONE MONUMENT	
SLOPE INTERCEPTS	slope intercept			SEPTIC TANK	
LOT, TIE AND OTHER MINOR DASHED LINES	---			WINDMILL	
UNDERGROUND FACILITY (POWER, TELEPHONE, TELEGRAPH, GAS, ETC.)	(Name or Type)			R/W POINT	
NO ACCESS (ACQUISITION)				R/W MONUMENT	
*LIMITED HIGHWAY EASEMENT					

\*(Shading omitted on Aerial Half-tones)

### STANDARD ABBREVIATIONS

ACRES	AC.
AHEAD	AH.
ALUMINUM	ALUM.
BACK	BK.
CENTERLINE	¢
CORNER	COR.
GARAGE	G.
HOUSE	H.
LIMITED HIGHWAY EASEMENT	L.H.E.
LONG CHORD	L.C.
LONG CHORD BEARING	L.C.B.
MANHOLE	M.H.
MONUMENT	MON.
PERMANENT	PERM.
PRIVATE ENTRANCE	P.E.
PROPERTY LINE	P.L.
RADIUS	R.
REMAINING	REM.
RESTAURANT	REST.
RIGHT OF WAY	R/W
STATE TRUNK HIGHWAY	S.T.H.
TANGENT	TAN.
TEMPORARY	TEMP.

END RELOCATION ORDER PROJECT 5580-01-21  
 STA. 335+52.73  
 Y 343,581.54  
 X 1,739,701.34  
 2,705.70' N. & 15.29' E. of the S. 1/4 Cor.,  
 Sec. 4, T. 5 N., R. 5 W.



Equation: 335+00.52 BK. =  
334+74.61 AH.

Equation: P.T. 309+12.27 BK. =  
309+14.76 AH.

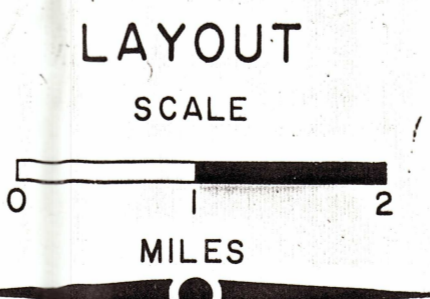
Equation: 292+40.53 BK. =  
292+29.57 AH.

Equation: P.T. 138+07.05 BK. =  
138+06.93 AH.

Equation: P.T. 121+57.95 BK. =  
121+56.70 AH.

Equation: 99+03.96 BK. =  
99+04.17 AH.

BEGIN RELOCATION ORDER PROJECT 5580-01-21  
 STA. 89+28.03  
 Y 323,916.36  
 X 1,751,354.12  
 896.07' S. & 1,067.43' E. of the S. 1/4 Cor.,  
 Sec. 23, T. 5 N., R. 5 W.



TOTAL NET LENGTH OF CENTERLINE = 4.670 MILES

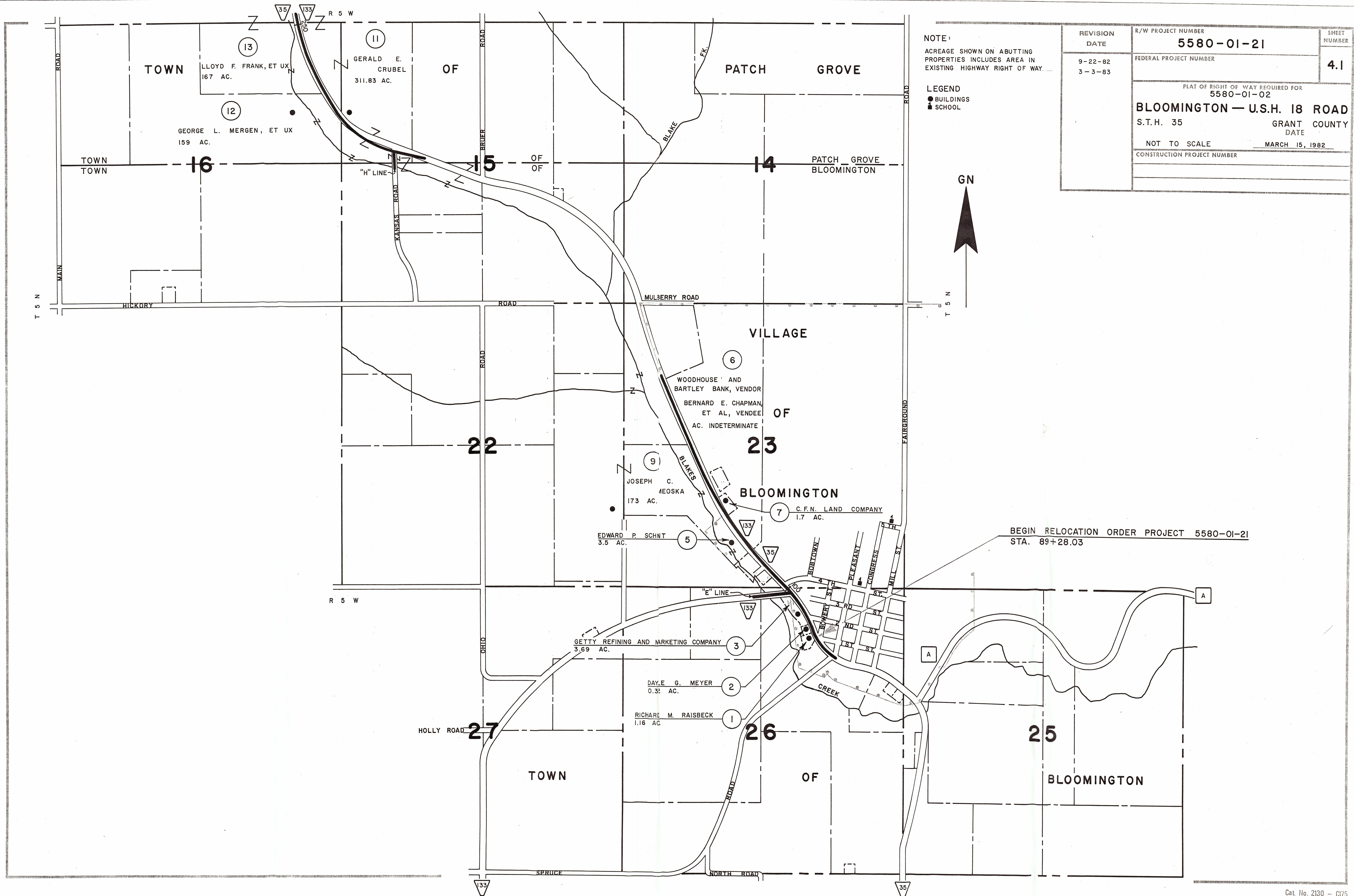
PARCEL NO.	SHEET NO.	OWNER
1	4.3	Richard M. Raisbeck
2	4.3	Dayle G. Meyer
3	4.3	Getty Refining & Marketing Company
4		
5	4.4	Edward P. Schmit
6	4.4	Woodhouse and Bartley Bank, Vendor
7	4.4	Bernard E. Chapman, et al, Vendee
8		
9	4.4	C. F. N. Land Company
10		
11	4.5	Joseph C. Meoska
12	& 4.6	Gerald E. Crubel
13	4.5	George L. Mergen, et ux
14	4.5	Lloyd F. Frank, et ux
15	& 4.6	
	4.6	
	& 4.7	John C. Hying
	4.6	
	& 4.7	Jean Lovasi Hying

R/W PROJECT NUMBER	5580-01-21	SHEET NUMBER	4.0	TOTAL SHEETS	10
FEDERAL PROJECT NUMBER	PLAT OF RIGHT OF WAY REQUIRED FOR 5580-01-02				
<b>BLOOMINGTON — U.S.H. 18 ROAD</b>					
S.T.H. 35		GRANT COUNTY			
CONSTRUCTION PROJECT NUMBER					

PARCEL NO.	SHEET NO.	OWNER
16	4.6	Grant Electric Cooperative
17	4.7	Laverne J. Crubel
18	4.7	Everett Tolle, Vendor
19	& 4.8	James F. Tolle, et ux, Vendee
20	4.7	Ida M. Weidemann
21	& 4.8	Robert S. Lane, Vendor
22	& 4.8	Neises Farms, Inc., Vendee
23	4.8	Village of Patch Grove
24	4.8	Joseph Scott
25	4.8	Norman J. Clark
26	4.5	Peoples Telephone of Mt. Hope
27	-4.8	
28	4.8	Neises Farms, Inc.
29	4.8	James R. Millin
30	4.9	Frances Bushnell, Vendor
31		John Curtis, Vendee
32		
33	4.4, 4.5, 4.6 & 4.8	Wisconsin Power & Light Company
34	4.4	Bloomington FFA
35	4.4	Frank Hardie Adv.
36	4.8	Lions Club International

All coordinates shown on this plat are referenced to the WISCONSIN COORDINATE SYSTEM SOUTH ZONE.

REVISION DATE	STATE OF WISCONSIN DEPARTMENT OF TRANSPORTATION
9-22-82	
3-3-83	Approved: <i>Harold Meyer</i> District Transportation Director
	Approved: _____ Director, Bureau of Real Estate
	U.S. DEPARTMENT OF TRANSPORTATION FEDERAL HIGHWAY ADMINISTRATION REGION 6 WISCONSIN DIVISION
	Approved: _____ Division Administrator



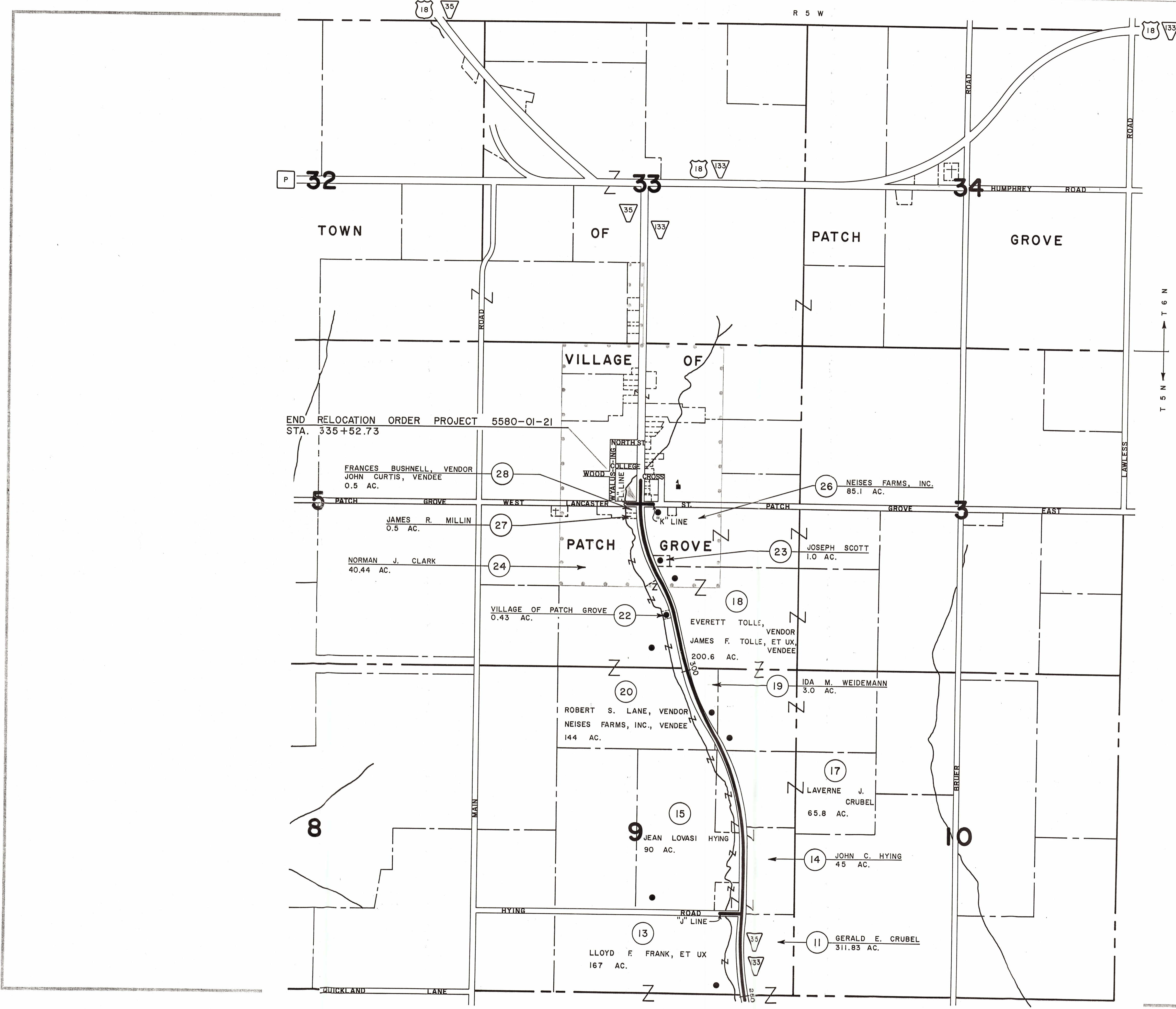
NOTE:  
 ACREAGE SHOWN ON ABUTTING  
 PROPERTIES INCLUDES AREA IN  
 EXISTING HIGHWAY RIGHT OF WAY.

LEGEND  
 ● BUILDINGS  
 ■ SCHOOL



REVISION DATE	R/W PROJECT NUMBER	SHEET NUMBER
9-22-82 3-3-83	5580-01-21	4.1
FEDERAL PROJECT NUMBER		
PLAT OF RIGHT OF WAY REQUIRED FOR 5580-01-02		
<b>BLOOMINGTON - U.S.H. 18 ROAD</b>		
S.T.H. 35	GRANT COUNTY	DATE
NOT TO SCALE	MARCH 15, 1982	
CONSTRUCTION PROJECT NUMBER		

BEGIN RELOCATION ORDER PROJECT 5580-01-21  
 STA. 89+28.03



REVISION DATE	R/W PROJECT NUMBER	SHEET NUMBER
9-22-82 3-3-83	5580-01-21	4.2
FEDERAL PROJECT NUMBER		
PLAT OF RIGHT OF WAY REQUIRED FOR 5580-01-02		
<b>BLOOMINGTON — U.S.H. 18 ROAD</b>		
S.T.H. 35	GRANT COUNTY	DATE
NOT TO SCALE	MARCH 15, 1982	
CONSTRUCTION PROJECT NUMBER		

NOTE:  
ACREAGE SHOWN ON ABUTTING PROPERTIES INCLUDES AREA IN EXISTING HIGHWAY RIGHT OF WAY

LEGEND  
● BUILDINGS  
■ SCHOOL

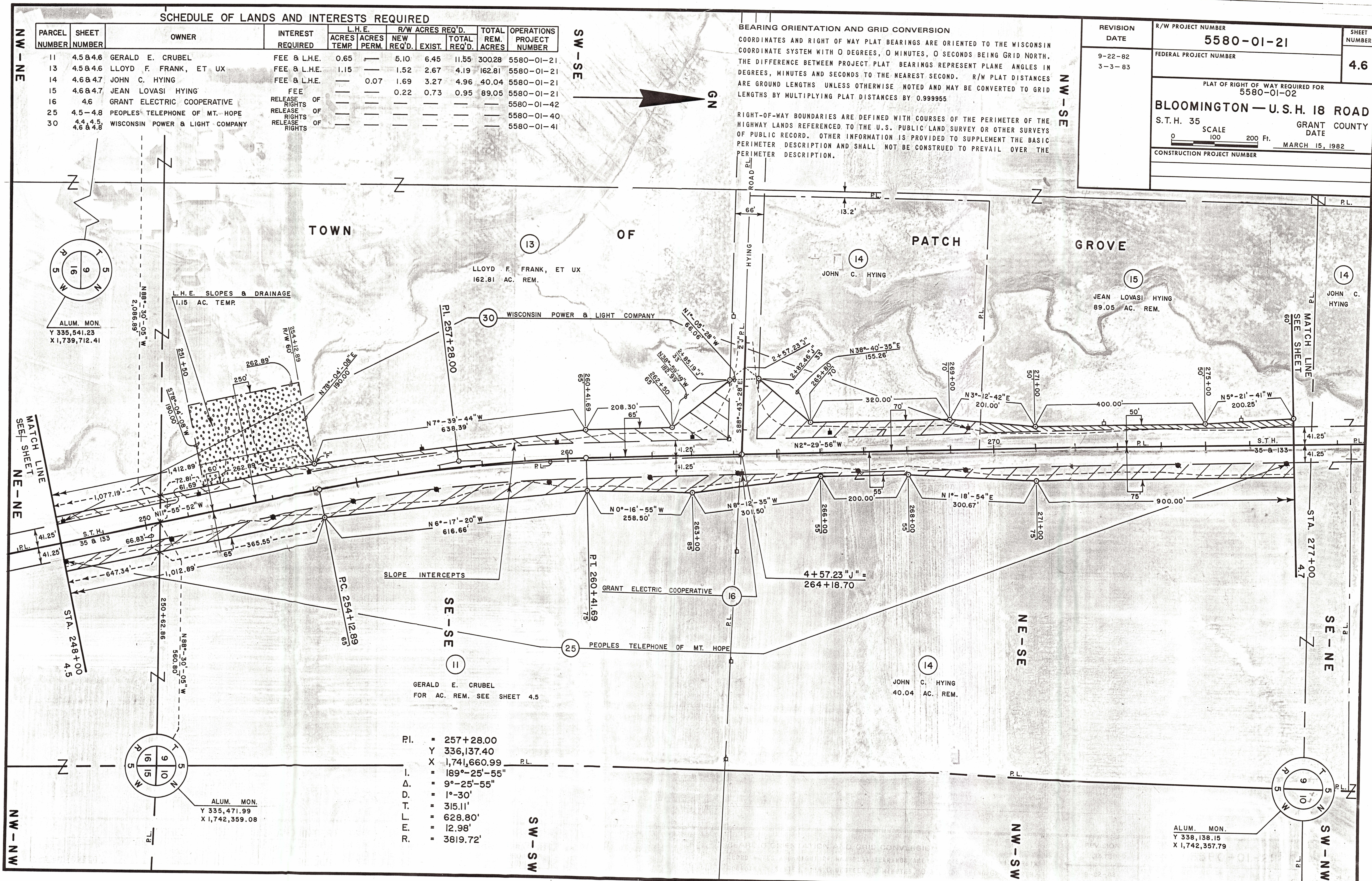
SCHEDULE OF LANDS AND INTERESTS REQUIRED

PARCEL NUMBER	SHEET NUMBER	OWNER	INTEREST REQUIRED	L.H.E.		R/W ACRES REQ'D.		TOTAL ACRES	OPERATIONS PROJECT NUMBER	
				ACRES TEMP.	ACRES PERM.	NEW REQ'D.	EXIST.			
11	4.5 & 4.6	GERALD E. CRUBEL	FEE & L.H.E.	0.65	---	5.10	6.45	11.55	300.28	5580-01-21
13	4.5 & 4.6	LLOYD F. FRANK, ET UX	FEE & L.H.E.	1.15	---	1.52	2.67	4.19	162.81	5580-01-21
14	4.6 & 4.7	JOHN C. HYING	FEE & L.H.E.	---	0.07	1.69	3.27	4.96	40.04	5580-01-21
15	4.6 & 4.7	JEAN LOVASI HYING	FEE	---	---	0.22	0.73	0.95	89.05	5580-01-21
16	4.6	GRANT ELECTRIC COOPERATIVE	RELEASE RIGHTS OF	---	---	---	---	---	---	5580-01-42
25	4.5-4.8	PEOPLES TELEPHONE OF MT. HOPE	RELEASE RIGHTS OF	---	---	---	---	---	---	5580-01-40
30	4.4, 4.5, 4.6 & 4.8	WISCONSIN POWER & LIGHT COMPANY	RELEASE RIGHTS OF	---	---	---	---	---	---	5580-01-41

**BEARING ORIENTATION AND GRID CONVERSION**  
 COORDINATES AND RIGHT OF WAY PLAT BEARINGS ARE ORIENTED TO THE WISCONSIN COORDINATE SYSTEM WITH 0 DEGREES, 0 MINUTES, 0 SECONDS BEING GRID NORTH. THE DIFFERENCE BETWEEN PROJECT PLAT BEARINGS REPRESENT PLANE ANGLES IN DEGREES, MINUTES AND SECONDS TO THE NEAREST SECOND. R/W PLAT DISTANCES ARE GROUND LENGTHS UNLESS OTHERWISE NOTED AND MAY BE CONVERTED TO GRID LENGTHS BY MULTIPLYING PLAT DISTANCES BY 0.9999955.

RIGHT-OF-WAY BOUNDARIES ARE DEFINED WITH COURSES OF THE PERIMETER OF THE HIGHWAY LANDS REFERENCED TO THE U.S. PUBLIC LAND SURVEY OR OTHER SURVEYS OF PUBLIC RECORD. OTHER INFORMATION IS PROVIDED TO SUPPLEMENT THE BASIC PERIMETER DESCRIPTION AND SHALL NOT BE CONSTRUED TO PREVAIL OVER THE PERIMETER DESCRIPTION.

REVISION DATE	R/W PROJECT NUMBER	SHEET NUMBER
9-22-82 3-3-83	5580-01-21	4.6
FEDERAL PROJECT NUMBER		
PLAT OF RIGHT OF WAY REQUIRED FOR 5580-01-02		
BLOOMINGTON — U.S.H. 18 ROAD		
S.T.H. 35	SCALE	GRANT COUNTY DATE
0 100 200 Ft.		MARCH 15, 1982
CONSTRUCTION PROJECT NUMBER		



- P.I. = 257+28.00
- Y = 336,137.40
- X = 1,741,660.99
- I. = 189°-25'-55"
- Δ. = 9°-25'-55"
- D. = 1°-30'
- T. = 315.11'
- L. = 628.80'
- E. = 12.98'
- R. = 3819.72'

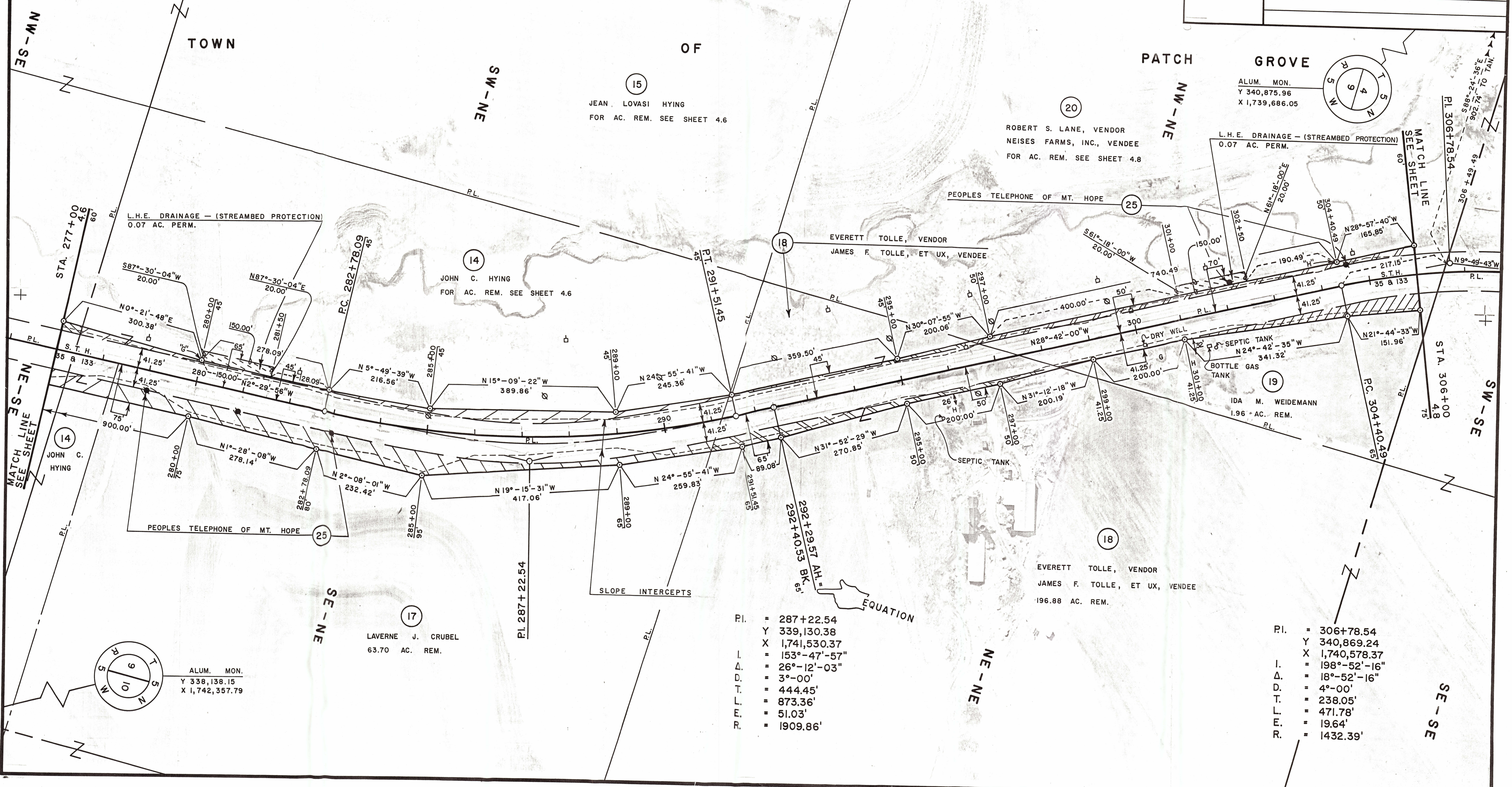
SCHEDULE OF LANDS AND INTERESTS REQUIRED

PARCEL NUMBER	SHEET NUMBER	OWNER	INTEREST REQUIRED	L.H.E.		R/W ACRES REQ'D.			TOTAL REM. ACRES	OPERATIONS PROJECT NUMBER
				ACRES TEMP.	ACRES PERM.	NEW REQ'D.	EXIST.	TOTAL REQ'D.		
14	4.6 & 4.7	JOHN C. HYING	FEE & L.H.E.	—	0.07	1.69	3.27	4.96	40.04	5580-01-21
15	4.6 & 4.7	JEAN LOVASI HYING	FEE	—	—	0.22	0.73	0.95	89.05	5580-01-21
16										
17	4.7	LAVERNE J. CRUBEL	FEE	—	—	0.88	1.22	2.10	63.70	5580-01-21
18	4.7 & 4.8	EVERETT TOLLE, VENDOR JAMES F. TOLLE, ET UX, VENDEE	FEE	—	—	0.74	2.98	3.72	196.88	5580-01-21
19	4.7 & 4.8	IDA M. WEIDEMANN	FEE	—	—	0.23	0.81	1.04	1.96	5580-01-21
20	4.7 & 4.8	ROBERT S. LANE, VENDOR NEISES FARMS, INC., VENDEE	FEE & L.H.E.	—	0.38	0.39	2.45	2.84	141.16	5580-01-21
25	4.5-4.8	PEOPLES TELEPHONE OF MT. HOPE	RELEASE OF RIGHTS	—	—	—	—	—	—	5580-01-40

BEARING ORIENTATION AND GRID CONVERSION  
 COORDINATES AND RIGHT OF WAY PLAT BEARINGS ARE ORIENTED TO THE WISCONSIN COORDINATE SYSTEM WITH 0 DEGREES, 0 MINUTES, 0 SECONDS BEING GRID NORTH. THE DIFFERENCE BETWEEN PROJECT PLAT BEARINGS REPRESENT PLANE ANGLES IN DEGREES, MINUTES AND SECONDS TO THE NEAREST SECOND. R/W PLAT DISTANCES ARE GROUND LENGTHS UNLESS OTHERWISE NOTED AND MAY BE CONVERTED TO GRID LENGTHS BY MULTIPLYING PLAT DISTANCES BY 0.999955

RIGHT-OF-WAY BOUNDARIES ARE DEFINED WITH COURSES OF THE PERIMETER OF THE HIGHWAY LANDS REFERENCED TO THE U.S. PUBLIC LAND SURVEY OR OTHER SURVEYS OF PUBLIC RECORD. OTHER INFORMATION IS PROVIDED TO SUPPLEMENT THE BASIC PERIMETER DESCRIPTION AND SHALL NOT BE CONSTRUED TO PREVAIL OVER THE PERIMETER DESCRIPTION.

REVISION DATE	R/W PROJECT NUMBER	SHEET NUMBER
9-22-82	5580-01-21	4.7
3-3-83	FEDERAL PROJECT NUMBER	
PLAT OF RIGHT OF WAY REQUIRED FOR 5580-01-02		
BLOOMINGTON — U.S.H. 18 ROAD		
S.T.H. 35	GRANT COUNTY	DATE
SCALE 0 100 200 Ft.	MARCH 15, 1982	
CONSTRUCTION PROJECT NUMBER		



L.H.E. DRAINAGE — (STREAMBED PROTECTION)  
0.07 AC. PERM.

L.H.E. DRAINAGE — (STREAMBED PROTECTION)  
0.07 AC. PERM.

MATCH LINE SEE SHEET

MATCH LINE SEE SHEET

ALUM. MON.  
Y 338,138.15  
X 1,742,357.79

P.I. = 306+78.54  
Y 340,869.24  
X 1,740,578.37  
I. = 198°-52'-16"  
D. = 18°-52'-16"  
T. = 4°-00'  
L. = 238.05'  
E. = 471.78'  
R. = 1432.39'

P.I. = 287+22.54  
Y 339,130.38  
X 1,741,530.37  
I. = 153°-47'-57"  
D. = 26°-12'-03"  
T. = 3°-00'  
L. = 444.45'  
E. = 873.36'  
R. = 51.03'  
= 1909.86'

LAVERNE J. CRUBEL  
63.70 AC. REM.

EVERETT TOLLE, VENDOR  
JAMES F. TOLLE, ET UX, VENDEE  
196.88 AC. REM.

JOHN C. HYING  
FOR AC. REM. SEE SHEET 4.6

JEAN LOVASI HYING  
FOR AC. REM. SEE SHEET 4.6

ROBERT S. LANE, VENDOR  
NEISES FARMS, INC., VENDEE  
FOR AC. REM. SEE SHEET 4.8

EVERETT TOLLE, VENDOR  
JAMES F. TOLLE, ET UX, VENDEE

IDA M. WEIDEMANN  
1.96 AC. REM.

STA. 306+00  
75

STA. 277+00  
60

PI. 306+78.54  
75

PI. 287+22.54

PI. 306+78.54  
75

PLAT OF RIGHT OF WAY REQUIRED FOR 5580-01-02

BLOOMINGTON — U.S.H. 18 ROAD

S.T.H. 35

GRANT COUNTY

DATE

MARCH 15, 1982

CONSTRUCTION PROJECT NUMBER

SCALE 0 100 200 Ft.

ALUM. MON.  
Y 340,875.96  
X 1,739,686.05

L.H.E. DRAINAGE — (STREAMBED PROTECTION)  
0.07 AC. PERM.

PEOPLES TELEPHONE OF MT. HOPE

EVERETT TOLLE, VENDOR  
JAMES F. TOLLE, ET UX, VENDEE

JOHN C. HYING  
FOR AC. REM. SEE SHEET 4.6

JEAN LOVASI HYING

ROBERT S. LANE, VENDOR  
NEISES FARMS, INC., VENDEE  
FOR AC. REM. SEE SHEET 4.8

IDA M. WEIDEMANN  
1.96 AC. REM.

EVERETT TOLLE, VENDOR  
JAMES F. TOLLE, ET UX, VENDEE  
196.88 AC. REM.

LAVERNE J. CRUBEL  
63.70 AC. REM.

ALUM. MON.  
Y 338,138.15  
X 1,742,357.79

P.I. = 287+22.54  
Y 339,130.38  
X 1,741,530.37  
I. = 153°-47'-57"  
D. = 26°-12'-03"  
T. = 3°-00'  
L. = 444.45'  
E. = 873.36'  
R. = 51.03'  
= 1909.86'

P.I. = 306+78.54  
Y 340,869.24  
X 1,740,578.37  
I. = 198°-52'-16"  
D. = 18°-52'-16"  
T. = 4°-00'  
L. = 238.05'  
E. = 471.78'  
R. = 1432.39'

L.H.E. DRAINAGE — (STREAMBED PROTECTION)  
0.07 AC. PERM.

PEOPLES TELEPHONE OF MT. HOPE

EVERETT TOLLE, VENDOR  
JAMES F. TOLLE, ET UX, VENDEE

JOHN C. HYING  
FOR AC. REM. SEE SHEET 4.6

JEAN LOVASI HYING

ROBERT S. LANE, VENDOR  
NEISES FARMS, INC., VENDEE  
FOR AC. REM. SEE SHEET 4.8

IDA M. WEIDEMANN  
1.96 AC. REM.

EVERETT TOLLE, VENDOR  
JAMES F. TOLLE, ET UX, VENDEE  
196.88 AC. REM.

LAVERNE J. CRUBEL  
63.70 AC. REM.

ALUM. MON.  
Y 338,138.15  
X 1,742,357.79

P.I. = 287+22.54  
Y 339,130.38  
X 1,741,530.37  
I. = 153°-47'-57"  
D. = 26°-12'-03"  
T. = 3°-00'  
L. = 444.45'  
E. = 873.36'  
R. = 51.03'  
= 1909.86'

P.I. = 306+78.54  
Y 340,869.24  
X 1,740,578.37  
I. = 198°-52'-16"  
D. = 18°-52'-16"  
T. = 4°-00'  
L. = 238.05'  
E. = 471.78'  
R. = 1432.39'

L.H.E. DRAINAGE — (STREAMBED PROTECTION)  
0.07 AC. PERM.

PEOPLES TELEPHONE OF MT. HOPE

EVERETT TOLLE, VENDOR  
JAMES F. TOLLE, ET UX, VENDEE

JOHN C. HYING  
FOR AC. REM. SEE SHEET 4.6

JEAN LOVASI HYING

ROBERT S. LANE, VENDOR  
NEISES FARMS, INC., VENDEE  
FOR AC. REM. SEE SHEET 4.8

IDA M. WEIDEMANN  
1.96 AC. REM.

EVERETT TOLLE, VENDOR  
JAMES F. TOLLE, ET UX, VENDEE  
196.88 AC. REM.

LAVERNE J. CRUBEL  
63.70 AC. REM.

ALUM. MON.  
Y 338,138.15  
X 1,742,357.79

P.I. = 287+22.54  
Y 339,130.38  
X 1,741,530.37  
I. = 153°-47'-57"  
D. = 26°-12'-03"  
T. = 3°-00'  
L. = 444.45'  
E. = 873.36'  
R. = 51.03'  
= 1909.86'

P.I. = 306+78.54  
Y 340,869.24  
X 1,740,578.37  
I. = 198°-52'-16"  
D. = 18°-52'-16"  
T. = 4°-00'  
L. = 238.05'  
E. = 471.78'  
R. = 1432.39'

L.H.E. DRAINAGE — (STREAMBED PROTECTION)  
0.07 AC. PERM.

PEOPLES TELEPHONE OF MT. HOPE

EVERETT TOLLE, VENDOR  
JAMES F. TOLLE, ET UX, VENDEE

JOHN C. HYING  
FOR AC. REM. SEE SHEET 4.6

JEAN LOVASI HYING

ROBERT S. LANE, VENDOR  
NEISES FARMS, INC., VENDEE  
FOR AC. REM. SEE SHEET 4.8

IDA M. WEIDEMANN  
1.96 AC. REM.

EVERETT TOLLE, VENDOR  
JAMES F. TOLLE, ET UX, VENDEE  
196.88 AC. REM.

LAVERNE J. CRUBEL  
63.70 AC. REM.

ALUM. MON.  
Y 338,138.15  
X 1,742,357.79

P.I. = 287+22.54  
Y 339,130.38  
X 1,741,530.37  
I. = 153°-47'-57"  
D. = 26°-12'-03"  
T. = 3°-00'  
L. = 444.45'  
E. = 873.36'  
R. = 51.03'  
= 1909.86'

P.I. = 306+78.54  
Y 340,869.24  
X 1,740,578.37  
I. = 198°-52'-16"  
D. = 18°-52'-16"  
T. = 4°-00'  
L. = 238.05'  
E. = 471.78'  
R. = 1432.39'

L.H.E. DRAINAGE — (STREAMBED PROTECTION)  
0.07 AC. PERM.

PEOPLES TELEPHONE OF MT. HOPE

EVERETT TOLLE, VENDOR  
JAMES F. TOLLE, ET UX, VENDEE

JOHN C. HYING  
FOR AC. REM. SEE SHEET 4.6

JEAN LOVASI HYING

ROBERT S. LANE, VENDOR  
NEISES FARMS, INC., VENDEE  
FOR AC. REM. SEE SHEET 4.8

IDA M. WEIDEMANN  
1.96 AC. REM.

EVERETT TOLLE, VENDOR  
JAMES F. TOLLE, ET UX, VENDEE  
196.88 AC. REM.

LAVERNE J. CRUBEL  
63.70 AC. REM.

ALUM. MON.  
Y 338,138.15  
X 1,742,357.79

P.I. = 287+22.54  
Y 339,130.38  
X 1,741,530.37  
I. = 153°-47'-57"  
D. = 26°-12'-03"  
T. = 3°-00'  
L. = 444.45'  
E. = 873.36'  
R. = 51.03'  
= 1909.86'

P.I. = 306+78.54  
Y 340,869.24  
X 1,740,578.37  
I. = 198°-52'-16"  
D. = 18°-52'-16"  
T. = 4°-00'  
L. = 238.05'  
E. = 471.78'  
R. = 1432.39'

L.H.E. DRAINAGE — (STREAMBED PROTECTION)  
0.07 AC. PERM.

PEOPLES TELEPHONE OF MT. HOPE

EVERETT TOLLE, VENDOR  
JAMES F. TOLLE, ET UX, VENDEE

JOHN C. HYING  
FOR AC. REM. SEE SHEET 4.6

JEAN LOVASI HYING

ROBERT S. LANE, VENDOR  
NEISES FARMS, INC., VENDEE  
FOR AC. REM. SEE SHEET 4.8

IDA M. WEIDEMANN  
1.96 AC. REM.

EVERETT TOLLE, VENDOR  
JAMES F. TOLLE, ET UX, VENDEE  
196.88 AC. REM.

LAVERNE J. CRUBEL  
63.70 AC. REM.

ALUM. MON.  
Y 338,138.15  
X 1,742,357.79

P.I. = 287+22.54  
Y 339,130.38  
X 1,741,530.37  
I. = 153°-47'-57"  
D. = 26°-12'-03"  
T. = 3°-00'  
L. = 444.45'  
E. = 873.36'  
R. = 51.03'  
= 1909.86'

P.I. = 306+78.54  
Y 340,869.24  
X 1,740,578.37  
I. = 198°-52'-16"  
D. = 18°-52'-16"  
T. = 4°-00'  
L. = 238.05'  
E. = 471.78'  
R. = 1432.39'

L.H.E. DRAINAGE — (STREAMBED PROTECTION)  
0.07 AC. PERM.

PEOPLES TELEPHONE OF MT. HOPE

EVERETT TOLLE, VENDOR  
JAMES F. TOLLE, ET UX, VENDEE

JOHN C. HYING  
FOR AC. REM. SEE SHEET 4.6

JEAN LOVASI HYING

ROBERT S. LANE, VENDOR  
NEISES FARMS, INC., VENDEE  
FOR AC. REM. SEE SHEET 4.8

IDA M. WEIDEMANN  
1.96 AC. REM.

EVERETT TOLLE, VENDOR  
JAMES F. TOLLE, ET UX, VENDEE  
196.88 AC. REM.

LAVERNE J. CRUBEL  
63.70 AC. REM.

ALUM. MON.  
Y 338,138.15  
X 1,742,357.79

P.I. = 287+22.54  
Y 339,130.38  
X 1,741,530.37  
I. = 153°-47'-57"  
D. = 26°-12'-03"  
T. = 3°-00'  
L. = 444.45'  
E. = 873.36'  
R. = 51.03'  
= 1909.86'

P.I. = 306+78.54  
Y 340,869.24  
X 1,740,578.37  
I. = 198°-52'-16"  
D. = 18°-52'-16"  
T. = 4°-00'  
L. = 238.05'  
E. = 471.78'  
R. = 1432.39'

L.H.E. DRAINAGE — (STREAMBED PROTECTION)  
0.07 AC. PERM.

PEOPLES TELEPHONE OF MT. HOPE

EVERETT TOLLE, VENDOR  
JAMES F. TOLLE, ET UX, VENDEE

JOHN C. HYING  
FOR AC. REM. SEE SHEET 4.6

JEAN LOVASI HYING

ROBERT S. LANE, VENDOR  
NEISES FARMS, INC., VENDEE  
FOR AC. REM. SEE SHEET 4.8

IDA M. WEIDEMANN  
1.96 AC. REM.

EVERETT TOLLE, VENDOR  
JAMES F. TOLLE, ET UX, VENDEE  
196.88 AC. REM.

LAVERNE J. CRUBEL  
63.70 AC. REM.

ALUM. MON.  
Y 338,138.15  
X 1,742,357.79

P.I. = 287+22.54  
Y 339,130.38  
X 1,741,530.37  
I. = 153°-47'-57"  
D. = 26°-12'-03"  
T. = 3°-00'  
L. = 444.45'  
E. = 873.36'  
R. = 51.03'  
= 1909.86'

P.I. = 306+78.54  
Y 340,869.24  
X 1,740,578.37  
I. = 198°-52'-16"  
D. = 18°-52'-16"  
T. = 4°-00'  
L. = 238.05'  
E. = 471.78'  
R. = 1432.39'

L.H.E. DRAINAGE — (STREAMBED PROTECTION)  
0.07 AC. PERM.

PEOPLES TELEPHONE OF MT. HOPE

EVERETT TOLLE, VENDOR  
JAMES F. TOLLE, ET UX, VENDEE

JOHN C. HYING  
FOR AC. REM. SEE SHEET 4.6

JEAN LOVASI HYING

ROBERT S. LANE, VENDOR  
NEISES FARMS, INC., VENDEE  
FOR AC. REM. SEE SHEET 4.8

IDA M. WEIDEMANN  
1.96 AC. REM.

EVERETT TOLLE, VENDOR  
JAMES F. TOLLE, ET UX, VENDEE  
196.88 AC. REM.

LAVERNE J. CRUBEL  
63.70 AC. REM.

ALUM. MON.  
Y 338,138.15  
X 1,742,357.79

P.I. = 287+22.54  
Y 339,130.38  
X 1,741,530.37  
I. = 153°-47'-57"  
D. = 26°-12'-03"  
T. = 3°-00'  
L. = 444.45'  
E. = 873.36'  
R. = 51.03'  
= 1909.86'

P.I. = 306+78.54  
Y 340,869.24  
X 1,740,578.37  
I. = 198°-52'-16"  
D. = 18°-52'-16"  
T. = 4°-00'  
L. = 238.05'  
E. = 471.78'  
R. = 1432.39'

L.H.E. DRAINAGE — (STREAMBED PROTECTION)  
0.07 AC. PERM.

PEOPLES TELEPHONE OF MT. HOPE

EVERETT TOLLE, VENDOR  
JAMES F. T

SCHEDULE OF LANDS AND INTERESTS REQUIRED

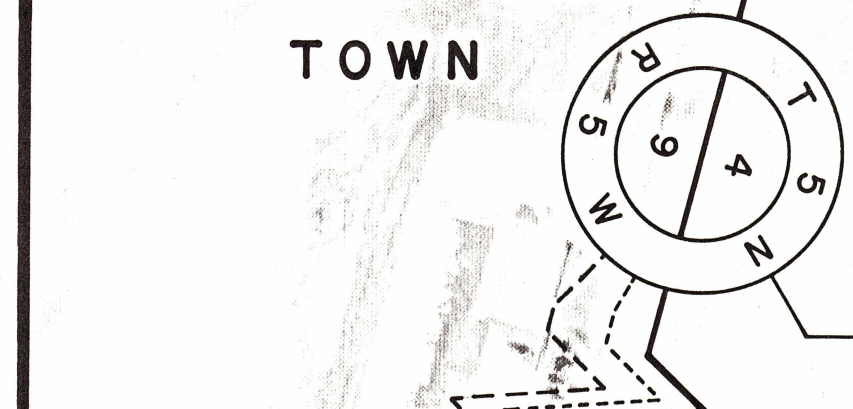
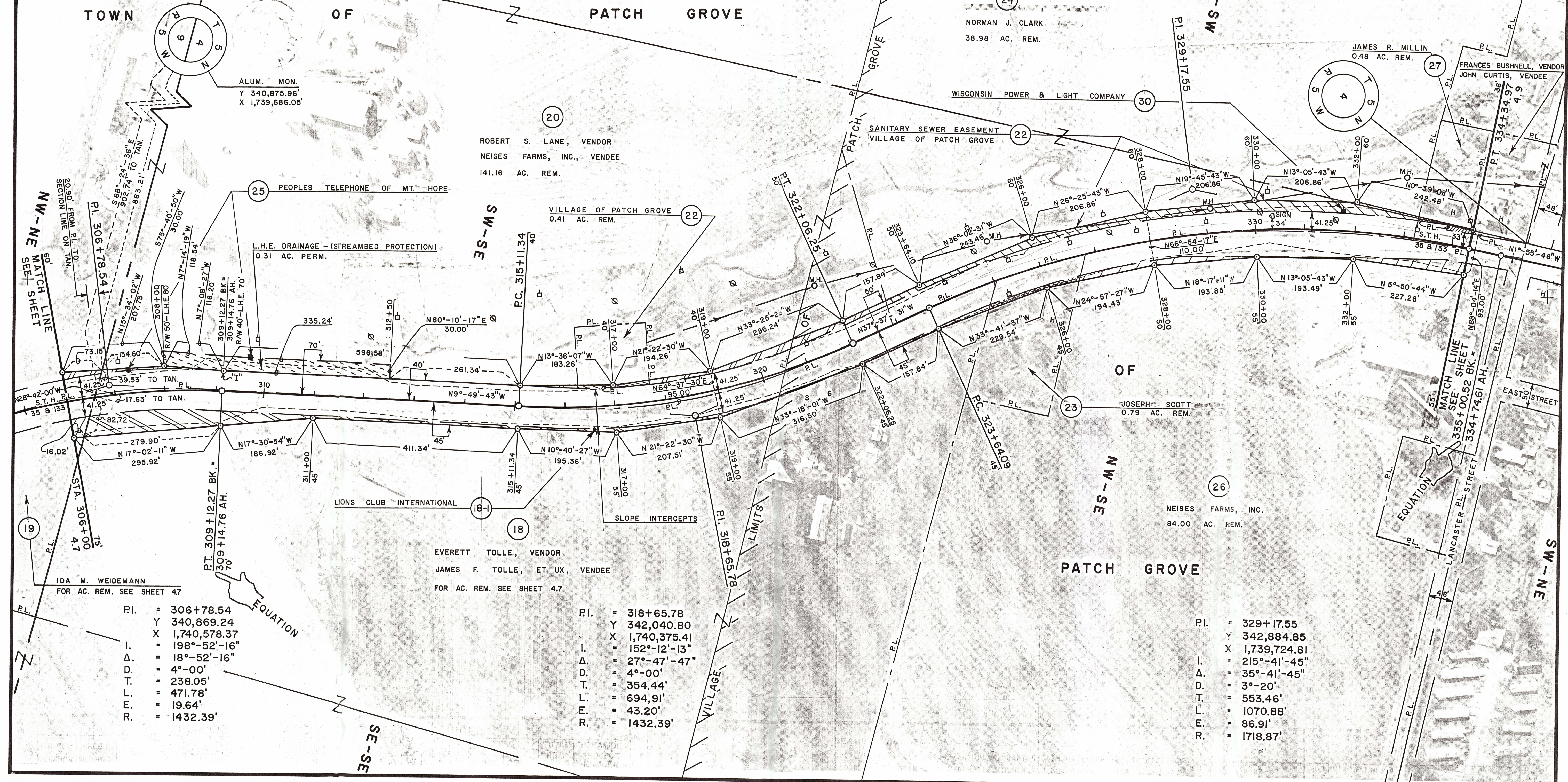
PARCEL NUMBER	SHEET NUMBER	OWNER	INTEREST REQUIRED	L.H.E.		R/W ACRES REQ'D.		TOTAL REM. ACRES	OPERATIONS PROJECT NUMBER
				ACRES TEMP.	ACRES PERM.	NEW REQ'D.	EXIST.		
18	4.7 & 4.8	EVERETT TOLLE, VENDOR JAMES F. TOLLE, ET UX, VENDEE	FEE	—	—	0.74	2.98	3.72	196.88 5580-01-21
19	4.7 & 4.8	IDA M. WEIDEMANN	FEE	—	—	0.23	0.81	1.04	1.96 5580-01-21
20	4.7 & 4.8	ROBERT S. LANE VENDOR NEISES FARMS, INC., VENDEE	FEE & L.H.E.	0.38	—	0.39	2.45	2.84	141.16 5580-01-21
21									
22	4.8 & 4.9	VILLAGE OF PATCH GROVE	FEE & RELEASE OF RIGHTS	—	—	0.02	—	0.02	0.41 5580-01-21
23	4.8	JOSEPH SCOTT	FEE	—	—	0.03	0.18	0.21	0.79 5580-01-21
24	4.8	NORMAN J. CLARK	FEE	—	—	0.42	1.04	1.46	38.98 5580-01-21
25	4.5-4.8	PEOPLES TELEPHONE OF MT. HOPE	RELEASE OF RIGHTS	—	—	—	—	—	5580-01-40
26	4.8 & 4.9	NEISES FARMS, INC.	FEE	—	—	0.26	0.84	1.10	84.00 5580-01-21
27	4.8	JAMES R. MILLIN	FEE	—	—	0.02	—	0.02	0.48 5580-01-21
29									
30	4.4, 4.5, 4.6 & 4.8	WISCONSIN POWER & LIGHT COMPANY	RELEASE OF RIGHTS	—	—	—	—	—	5580-01-41
18-1	4.6	LIONS CLUB INTERNATIONAL	SIGN RIGHTS	—	—	—	—	—	5580-01-21

BEARING ORIENTATION AND GRID CONVERSION

COORDINATES AND RIGHT OF WAY PLAT BEARINGS ARE ORIENTED TO THE WISCONSIN COORDINATE SYSTEM WITH 0 DEGREES, 0 MINUTES, 0 SECONDS BEING GRID NORTH. THE DIFFERENCE BETWEEN PROJECT PLAT BEARINGS REPRESENT PLANE ANGLES IN DEGREES, MINUTES AND SECONDS TO THE NEAREST SECOND. R/W PLAT DISTANCES ARE GROUND LENGTHS UNLESS OTHERWISE NOTED AND MAY BE CONVERTED TO GRID LENGTHS BY MULTIPLYING PLAT DISTANCES BY 0.999955

RIGHT-OF-WAY BOUNDARIES ARE DEFINED WITH COURSES OF THE PERIMETER OF THE HIGHWAY LANDS REFERENCED TO THE U.S. PUBLIC LAND SURVEY OR OTHER SURVEYS OF PUBLIC RECORD. OTHER INFORMATION IS PROVIDED TO SUPPLEMENT THE BASIC PERIMETER DESCRIPTION AND SHALL NOT BE CONSTRUED TO PREVAIL OVER THE PERIMETER DESCRIPTION.

REVISION DATE	R/W PROJECT NUMBER	SHEET NUMBER
9-22-82	5580-01-21	4.8
3-3-83	FEDERAL PROJECT NUMBER	
PLAT OF RIGHT OF WAY REQUIRED FOR 5580-01-02		
<b>BLOOMINGTON — U.S.H. 18 ROAD</b>		
S.T.H. 35	SCALE	GRANT COUNTY DATE
	0 100 200 Ft.	MARCH 15, 1982
CONSTRUCTION PROJECT NUMBER		



ALUM. MON.  
Y 340,875.96'  
X 1,739,686.05'

NW-NE MATCH LINE  
60'  
SECTION LINE ON TAN.  
20.90' FROM P.I. TO TAN.

IDA M. WEIDEMANN  
FOR AC. REM. SEE SHEET 47

P.I. = 306+78.54  
Y = 340,869.24  
X = 1,740,578.37  
I. = 198°-52'-16"  
D. = 18°-52'-16"  
D. = 4°-00'  
T. = 238.05'  
L. = 471.78'  
E. = 19.64'  
R. = 1432.39'

EVERETT TOLLE, VENDOR  
JAMES F. TOLLE, ET UX, VENDEE  
FOR AC. REM. SEE SHEET 4.7

P.I. = 318+65.78  
Y = 342,040.80  
X = 1,740,375.41  
I. = 152°-12'-13"  
D. = 27°-47'-47"  
D. = 4°-00'  
T. = 354.44'  
L. = 694.91'  
E. = 43.20'  
R. = 1432.39'

P.I. = 329+17.55  
Y = 342,884.85  
X = 1,739,724.81  
I. = 215°-41'-45"  
D. = 35°-41'-45"  
D. = 3°-20'  
T. = 553.46'  
L. = 1070.88'  
E. = 86.91'  
R. = 1718.87'

SCHEDULE OF LANDS AND INTERESTS REQUIRED

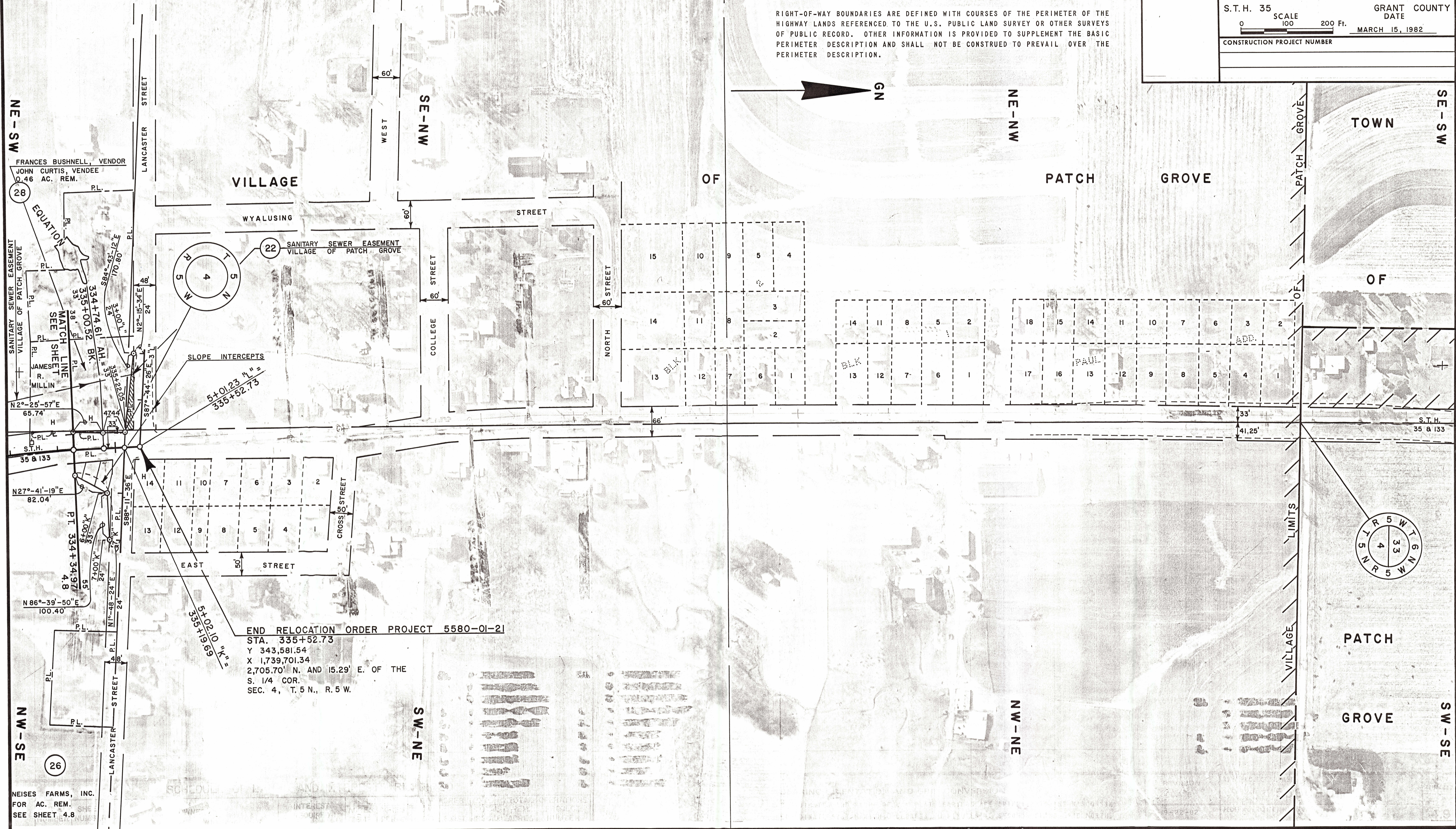
PARCEL NUMBER	SHEET NUMBER	OWNER	INTEREST REQUIRED	L.H.E.		R/W ACRES REQ'D.		TOTAL REM. ACRES	OPERATIONS PROJECT NUMBER
				ACRES TEMP.	ACRES PERM.	NEW REQ'D.	EXIST. REQ'D.		
25	4.8 & 4.9	NEISES FARMS, INC.	FEE	—	—	0.26	0.84	1.10	84.00 5580-01-21
28	4.9	FRANCES BUSHNELL, VENDOR	FEE	—	—	0.04	—	0.04	0.46 5580-01-21
22	4.8 & 4.9	JOHN CURTIS, VENDEE VILLAGE OF PATCH GROVE	FEE OF RIGHTS	—	—	0.02	—	0.02	0.41 5580-01-21

BEARING ORIENTATION AND GRID CONVERSION

COORDINATES AND RIGHT OF WAY PLAT BEARINGS ARE ORIENTED TO THE WISCONSIN COORDINATE SYSTEM WITH 0 DEGREES, 0 MINUTES, 0 SECONDS BEING GRID NORTH. THE DIFFERENCE BETWEEN PROJECT PLAT BEARINGS REPRESENT PLANE ANGLES IN DEGREES, MINUTES AND SECONDS TO THE NEAREST SECOND. R/W PLAT DISTANCES ARE GROUND LENGTHS UNLESS OTHERWISE NOTED AND MAY BE CONVERTED TO GRID LENGTHS BY MULTIPLYING PLAT DISTANCES BY 0.999955

RIGHT-OF-WAY BOUNDARIES ARE DEFINED WITH COURSES OF THE PERIMETER OF THE HIGHWAY LANDS REFERENCED TO THE U.S. PUBLIC LAND SURVEY OR OTHER SURVEYS OF PUBLIC RECORD. OTHER INFORMATION IS PROVIDED TO SUPPLEMENT THE BASIC PERIMETER DESCRIPTION AND SHALL NOT BE CONSTRUED TO PREVAIL OVER THE PERIMETER DESCRIPTION.

REVISION DATE	R/W PROJECT NUMBER	SHEET NUMBER
9-22-82 3-3-83	5580-01-21	4.9
FEDERAL PROJECT NUMBER		
PLAT OF RIGHT OF WAY REQUIRED FOR 5580-01-02		
BLOOMINGTON — U.S.H. 18 ROAD		
S.T.H. 35	SCALE	GRANT COUNTY DATE
	0 100 200 Ft.	MARCH 15, 1982
CONSTRUCTION PROJECT NUMBER		



END RELOCATION ORDER PROJECT 5580-01-21  
 STA. 335+52.73  
 Y 343,581.54  
 X 1,739,701.34  
 2,705.70' N. AND 15.29' E. OF THE  
 S. 1/4 COR.  
 SEC. 4, T. 5 N., R. 5 W.