

TL

R/W PROJECT NUMBER 1662-00-21	SHEET NUMBER 4.0	TOTAL SHEETS 8
FEDERAL PROJECT NUMBER		
PLAT OF RIGHT OF WAY REQUIRED FOR		
FENNIMORE — MONTFORT ROAD		
USH 18		
GRANT COUNTY		

CONVENTIONAL SIGNS AND ABBREVIATIONS

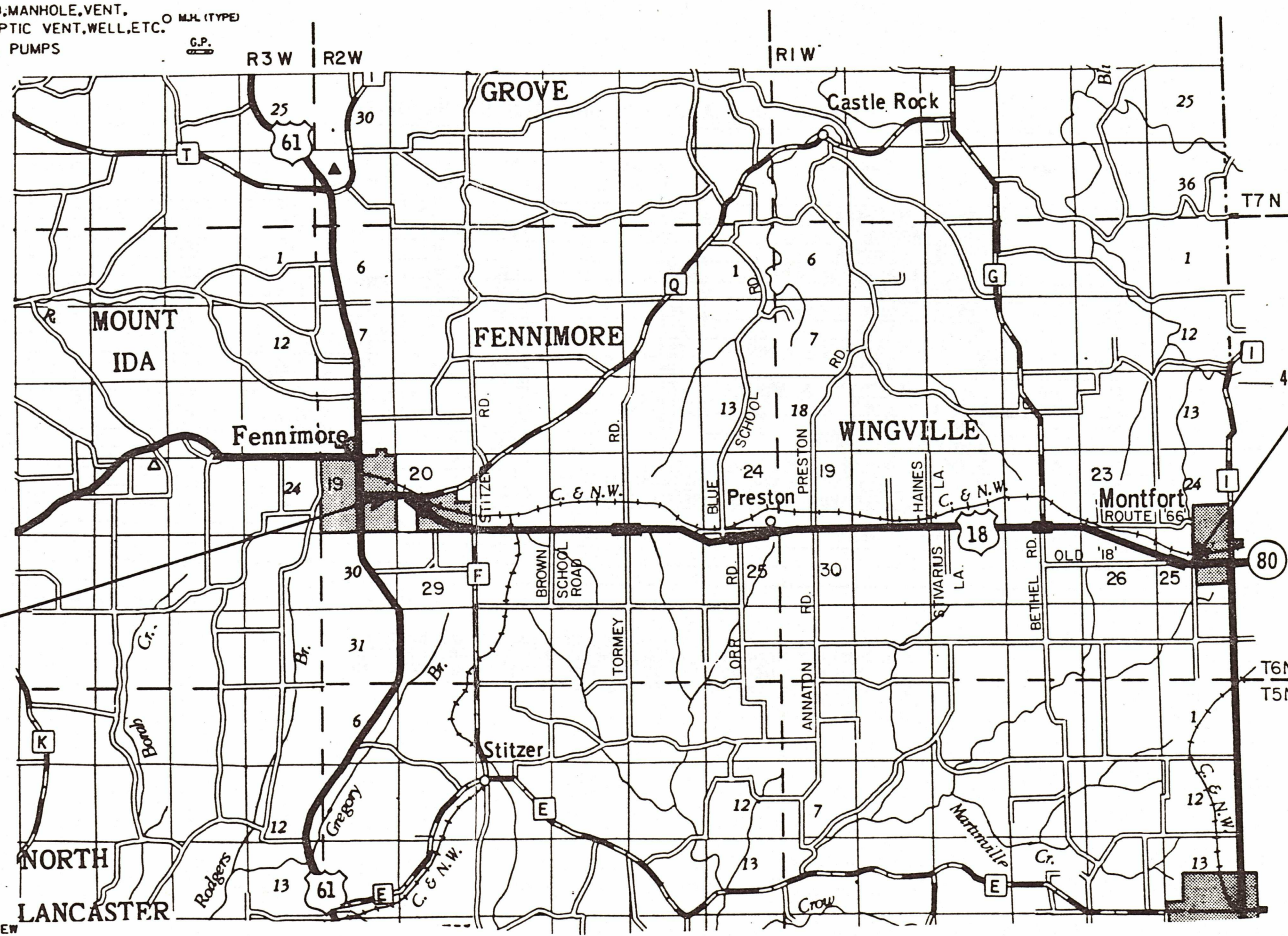
STATE LINE
COUNTY LINE
TOWNSHIP AND RANGE LINES
SECTION LINE
QUARTER LINE
SIXTEENTH LINE
NEW REFERENCE LINE
NEW R/W LINE
EXISTING R/W LINE
PROPERTY LINE
CORPORATE LIMITS
LOT, TIE AND OTHER MINOR LINES
SLOPE INTERCEPTS
UNDERGROUND FACILITY (GAS, TELEPHONE, ELECTRIC, ETC.)
FENCE
TEMPORARY LIMITED EASEMENT
PERMANENT LIMITED EASEMENT
BEAM GUARD
TRANSMISSION TOWER AND LINE

FOUNDATION OR RUIN BUILDING
CEMETERY
GAS MARKER OR TELEPHONE PEDESTAL
IRON PIN
R/W MONUMENT
VALVE
WINDMILL
SILO, MANHOLE, VENT, SEPTIC VENT, WELL, ETC.
GAS PUMPS

HAZARDOUS UTILITY SITE
BRIDGE
STREAM OR RIVER
LAKE
CULVERT (BOX, PIPE OR CATTLE PASS)
RAIL LINE
BUSHES
TREES (DECIDUOUS) (CONIFEROUS)
WOODS

POWER POLE
TELEPHONE POLE
SIGN

NO ACCESS (BY ACQUISITION)
NO ACCESS (BY STATUTORY AUTHORITY)
NO ACCESS (BY PREVIOUS PROJECT)



END RELOCATION ORDER

STA. 595+00
80' NORTH AND 954.45' WEST OF THE CENTER OF SECTION 25, T6N, R1W

BEGIN RELOCATION ORDER

STA. 36 + 37.17

0' NORTH AND 0' EAST OF THE WEST 1/4 CORNER OF SECTION 20, T6N, R2W

PLANS PREPARED BY
MEAD & HUNT, INC.
CONSULTING ENGINEERS
MADISON, WISCONSIN

Robert P. Fawcett

NOTES

DIMENSIONING FOR THE NEW R/W IS MEASURED ALONG AND PERPENDICULAR TO THE NEW REFERENCE LINES.

GOVERNMENTAL LAND LINE AND REFERENCE LINE ARE NOT COINCIDENTAL.

DISTANCES FROM REFERENCE LINE ARE $\frac{xx'}{R}$

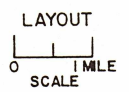
DISTANCES FROM GOVERNMENTAL LAND LINE ARE $\frac{xx'}{C}$ OR $xx' C$

EXISTING HIGHWAY RIGHT OF WAY FOR USH 18 SHOWN HEREIN IS BASED ON THE FOLLOWING POINTS OF REFERENCE PREVIOUS PROJECTS 9573-A, B, FO17-1(22). SIDEROAD EXISTING HIGHWAY RIGHT-OF-WAY POINTS OF REFERENCE ARE SHOWN ON PLAT DETAIL SHEETS.

COORDINATES AND BEARINGS ON THIS PLAT ARE ORIENTED TO THE WISCONSIN COORDINATE SYSTEM SOUTH ZONE. ALL PLAT DISTANCES ARE GROUND LENGTH AND MAY BE CONVERTED TO GRID LENGTH BY MULTIPLYING THE DISTANCE BY THE GRID FACTOR PROVIDED ON THE DETAIL SHEETS.

RIGHT OF WAY MONUMENTS ARE TYPE 2 AND ARE PLACED PRIOR TO OR AT THE TIME OF LAND TITLE TRANSFER.

RIGHT OF WAY BOUNDARIES ARE DEFINED WITH COURSES OF THE PERIMETER OF THE HIGHWAY LANDS REFERENCED TO THE U.S. PUBLIC LAND SURVEY OR OTHER SURVEYS OF PUBLIC RECORD.



TOTAL NET LENGTH OF CENTERLINE = 10.768 MI.

REVISION DATE	STATE OF WISCONSIN DEPARTMENT OF TRANSPORTATION
1-5-90 N.C. 8-18-92	APPROVED: <i>10-15-89 Fred E. Ross</i>
	APPROVED:
	U.S. DEPARTMENT OF TRANSPORTATION FEDERAL HIGHWAY ADMINISTRATION
	APPROVED:

REVISION DATE
1-5-90
8-18-92

ROUTE COUNTY
USH 18 GRANT

DATE
10-13-89

PROJECT NUMBER
1662-00-21

FEDERAL PROJECT NUMBER

SHEET
NUMBER

4.1

SCHEDULE OF LANDS & INTERESTS REQUIRED

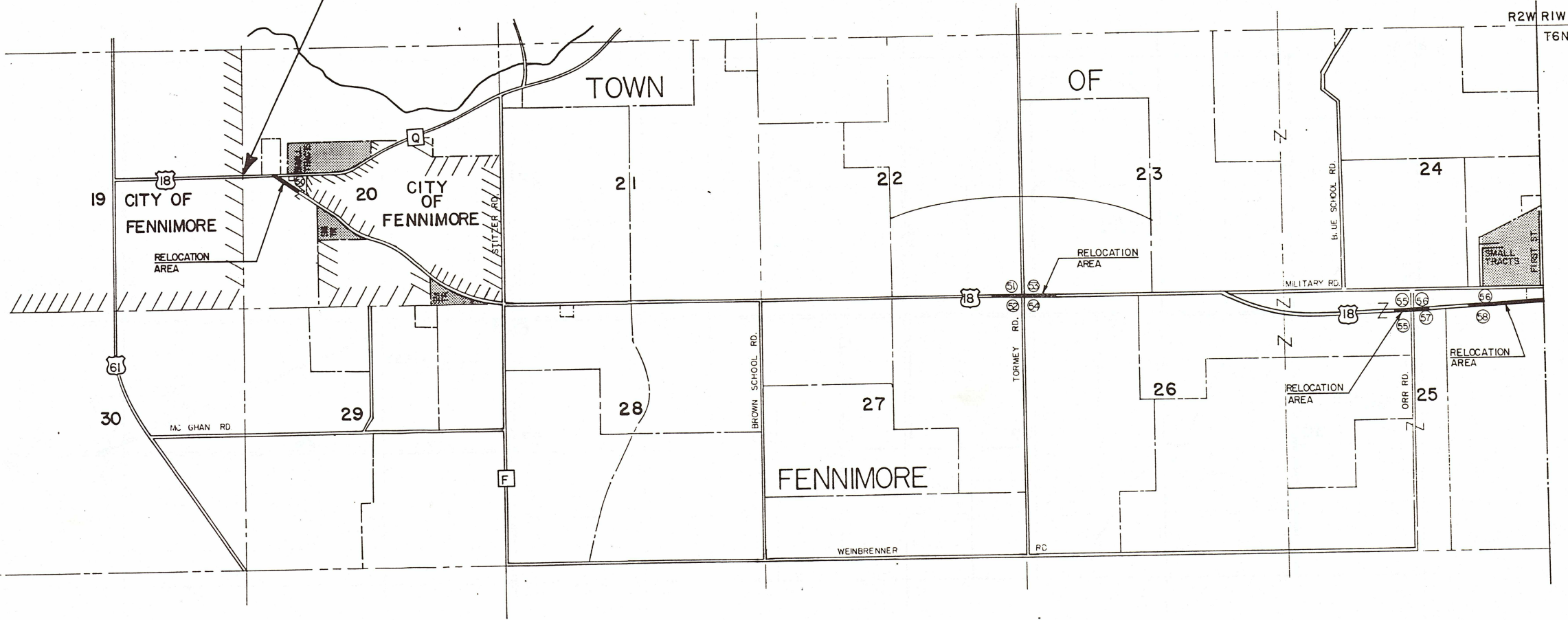
PARCEL	SHEET	OWNER(S)	INTEREST REQUIRED	TOTAL ACRES	R/W ACRES REQUIRED			T.O. ACRES REMAINS	T.L.E. ACRES
					NEW	EXISTING	TOTAL		
50	4.4	CITY OF FENNIMORE	FEE	---	0.43	0.00	0.43	---	---
51	4.5	CARL J WINKERS	FEE, TLE	120	0.43	0.32	0.75	119.25	0.03
52	4.5	MICHAEL D. PORTER	FEE	200	0.70	0.42	1.12	198.88	---
53	4.5	STANLEY E. & MARILYN J DAVIES	FEE	111.25	0.30	0.19	0.49	110.76	0.04
54	4.5	HAROLD E. LINE	FEE	156.00	0.28	0.30	0.58	155.42	---
55	4.6	CARL J. & BESSIE E. WINKERS	FEE	80.00	0.19	0.33	0.52	79.48	---
56	4.6	IRA W. GRISWOLD	FEE	14.1	0.18	0.07	0.25	13.85	---
57	4.6	CLETUS J. & ELIZABETH J. KROLL	FEE	184.1	0.21	0.26	0.47	183.63	---
58	4.6	THOMAS M. FOLEY	FEE, TLE	224.5	0.14	0.00	0.14	224.36	0.03
59	4.6	EDGAR F. & LORETTA M. MERTEN	FEE	151.68	0.07	0.00	0.07	151.61	---
60	4.7	DALE A. & ALICE VOGEL	FEE, TLE	126	0.13	0.20	0.33	125.67	0.17
61	4.7	JOHN F. WINKERS, JR.	FEE	160	0.17	0.09	0.26	159.74	---
62	4.7	JOHN I. ALLCOTT, TRUST	FEE	118.5	0.25	0.15	0.40	118.10	---
63	4.7	TURNERS' EGG RANCH, INC.	FEE	17.00	0.79	0.35	1.14	15.86	---
64	4.4	WISCONSIN GAS COMPANY (40)	RELEASE OF RIGHTS	---	---	---	---	---	---
65	4.5	FENNIMORE TELEPHONE CO. (41)	RELEASE OF RIGHTS	---	---	---	---	---	---
67	4.7	GTE-NORTH (43)	RELEASE OF RIGHTS	---	---	---	---	---	---

AREAS SHOWN IN THE TOTAL ACRES COLUMN MAY BE APPROXIMATE AND ARE DERIVED FROM TAX ROLLS OR OTHER AVAILABLE SOURCES AND MAY NOT INCLUDE LANDS OF THE OWNER WHICH ARE NOT CONTIGUOUS TO THE AREA TO BE ACQUIRED.

REVISION DATE 1-5-90 N.C. 8-18-92 N.C.	ROUTE USH 18	COUNTY GRANT	DATE 10-13-89	R.W. PROJECT NUMBER 1662-00-21	SHEET NUMBER 4.2
NOT TO SCALE				FEDERAL PROJECT NUMBER	



BEGIN RELOCATION ORDER
STA 36+37.17



R2W RIW
T6N

GN



REVISION DATE
1-3-90 N.C.
8-18-92 N.C.

ROUTE
USH 18

COUNTY
GRANT

DATE
10-13-89

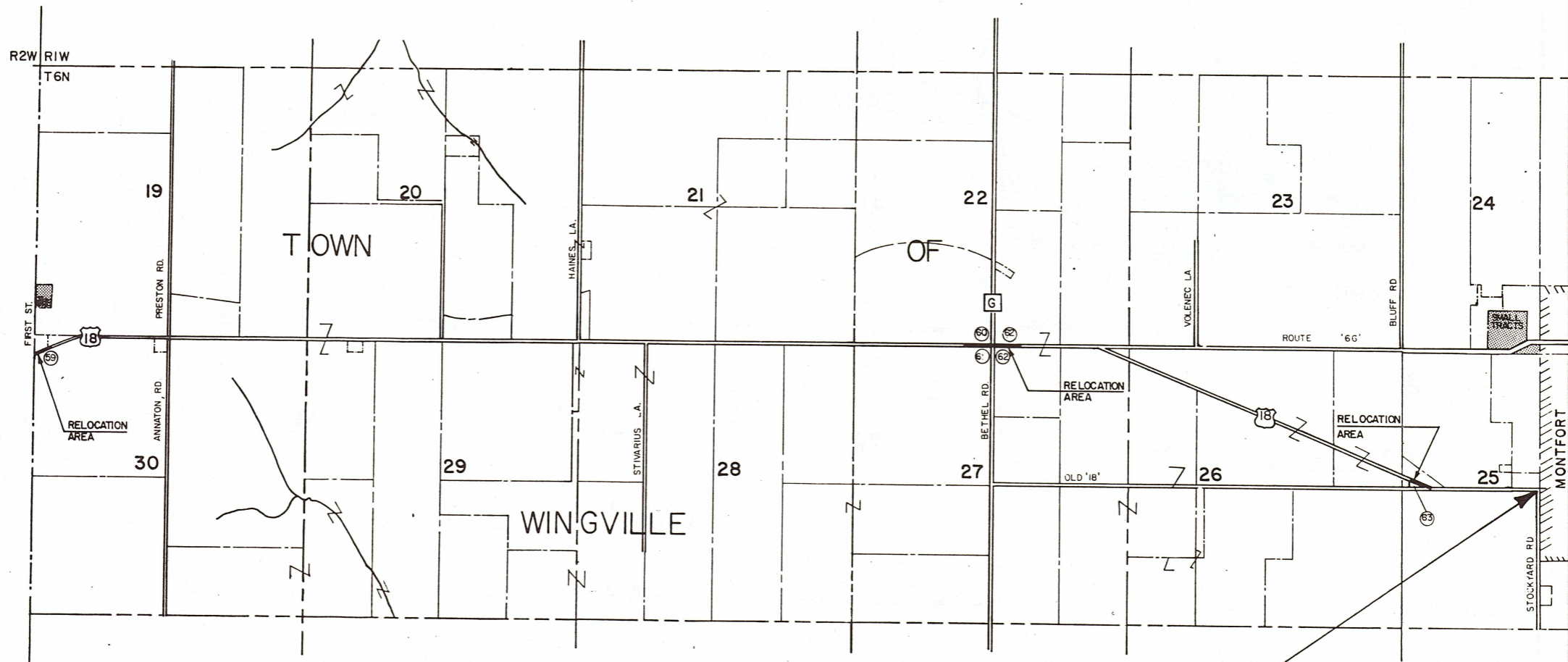
R/W PROJECT NUMBER
1662-00-21

FEDERAL PROJECT NUMBER

SHEET
NUMBER

4.3

NOT TO SCALE



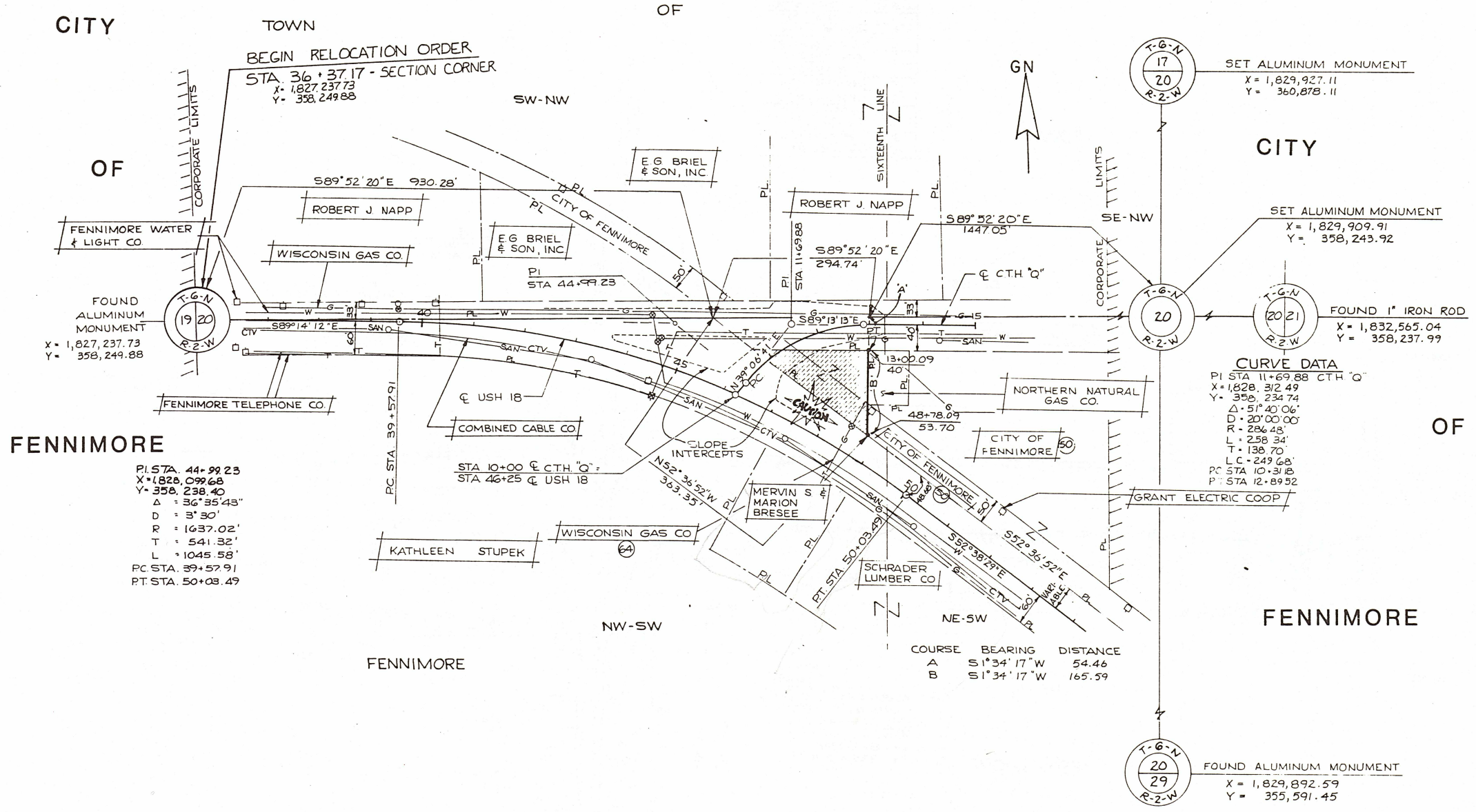
END RELOCATION ORDER
STA 595+00

NOTE: EXISTING HIGHWAY RIGHT-OF-WAY FOR CTH 'Q' ESTABLISHED FROM PREVIOUS PLAN 5021(01) AND FROM THE E-W 1/4 LINE OF SECTION 20

REVISION DATE
1-5-90 N.C.
8-18-92 N.C.

ROUTE	COUNTY	DATE
USH 18	GRANT	10-13-89
SCALE FT		GRID FACTOR
100 200		0.999955

R.W. PROJECT NUMBER	SHEET NUMBER
1662-00 21	4.4
FEDERAL PROJECT NUMBER	



CITY

TOWN

OF

BEGIN RELOCATION ORDER
STA 36+37.17 - SECTION CORNER
X = 1,827,237.73
Y = 358,249.88



SET ALUMINUM MONUMENT
X = 1,829,927.11
Y = 360,878.11

CITY

OF

FENNIMORE WATER & LIGHT CO.

FOUND ALUMINUM MONUMENT
X = 1,827,237.73
Y = 358,249.88

FENNIMORE TELEPHONE CO.

FENNIMORE

PI STA. 44+99.23
X = 1,828,099.68
Y = 358,238.40
Δ = 36°35'43"
D = 3'30'
R = 1637.02'
T = 541.32'
L = 1045.58'
PC STA. 39+57.91
PT STA. 50+08.49

FENNIMORE

NW-SW

COURSE	BEARING	DISTANCE
A	S1°34'17" W	54.46
B	S1°34'17" W	165.59

FENNIMORE

OF

CURVE DATA
PI STA 11+69.88 CTH 'Q'
X = 1,828,312.49
Y = 358,234.74
Δ = 51°40'06"
D = 20'00'00"
R = 286.48'
L = 258.34'
T = 138.70'
LC = 249.68'
PC STA 10+31.8
PT STA 12+89.92

SET ALUMINUM MONUMENT
X = 1,829,909.91
Y = 358,243.92

FOUND 1" IRON ROD
X = 1,832,565.04
Y = 358,237.99

FOUND ALUMINUM MONUMENT
X = 1,829,892.59
Y = 355,591.45

NOTE EXISTING HIGHWAY RIGHT OF WAY FOR TORMEY ROAD ESTABLISHED FROM PREVIOUS PLAN 9573-A AND FROM THE EAST SECTION LINE OF SECTIONS 22 AND 27

REVISION DATE
1-5-90
8-18-92

ROUTE	COUNTY	D.A.T.
USH 18	GRANT	10-13-89
SCALE FT		GRID FACTOR
0 100 200		0.999955

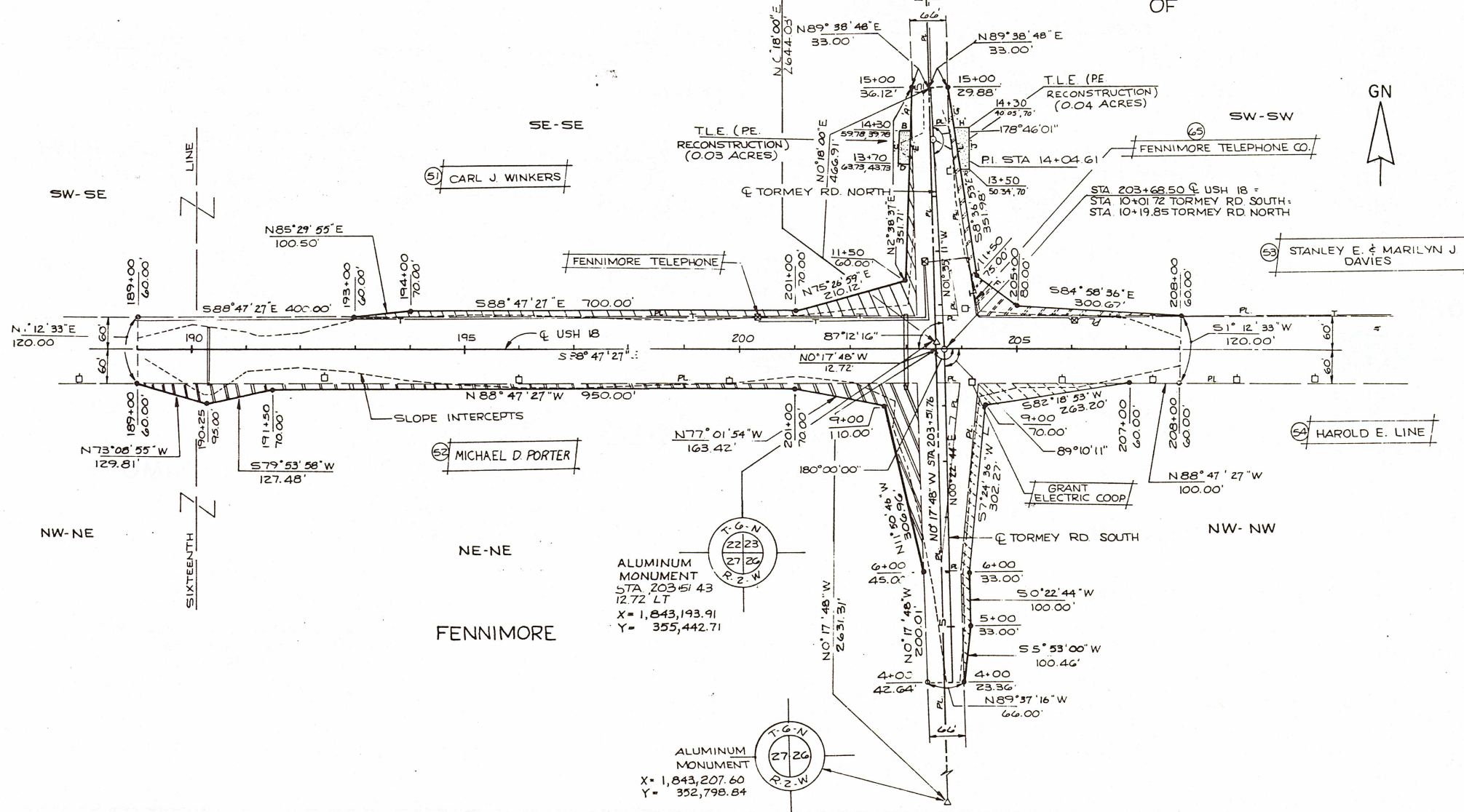
R/W PROJECT NUMBER	SHEET NUMBER
62-00-21	45
FEDERAL PROJECT NUMBER	

COURSE	BEARING	DISTANCE
A	S2°38'37"W	70.10'
B	N89°38'48"E	20.00'
C	N2°37'06"E	61.45'
D	S88°24'49"W	20.00'
E	S2°38'37"W	61.02'
F	S46°20'37"E	82.70'
G	S8°36'53"E	70.73'
H	N81°38'48"E	29.95'
J	S1°11'57"E	78.49'
K	S88°24'49"W	19.66'
L	N8°36'55"W	79.73'

X = 1,843,207.76
Y = 358,086.58

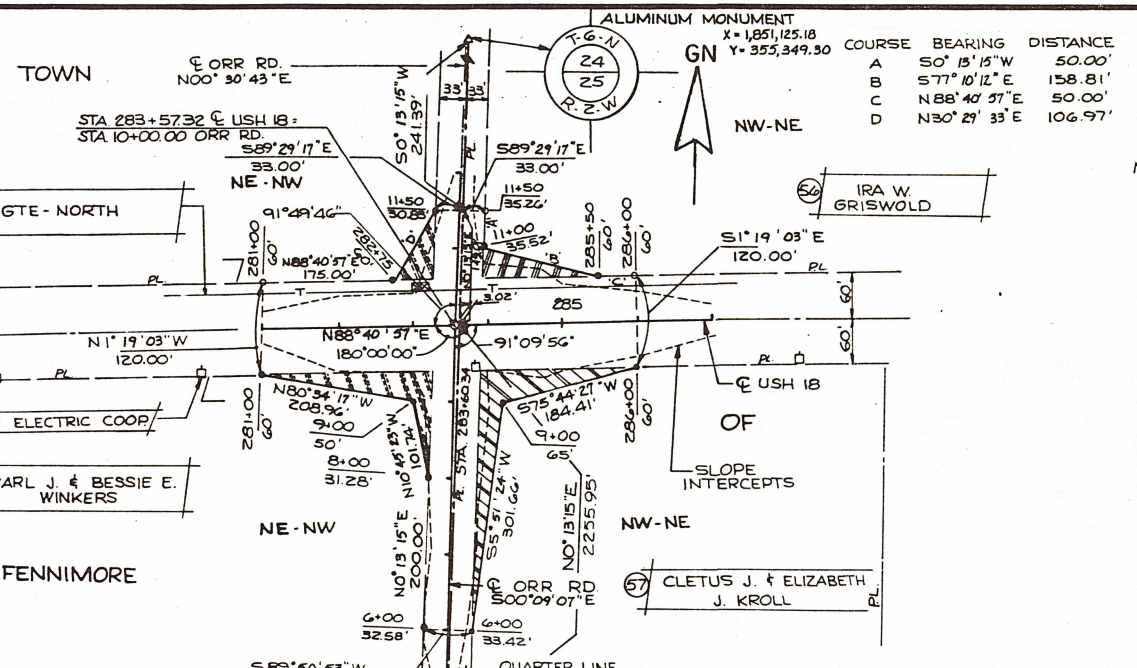
TOWN

OF



ALUMINUM MONUMENT
STA 203+51.43
12.72' LT
X = 1,843,193.91
Y = 355,442.71

ALUMINUM MONUMENT
X = 1,843,207.60
Y = 352,798.84



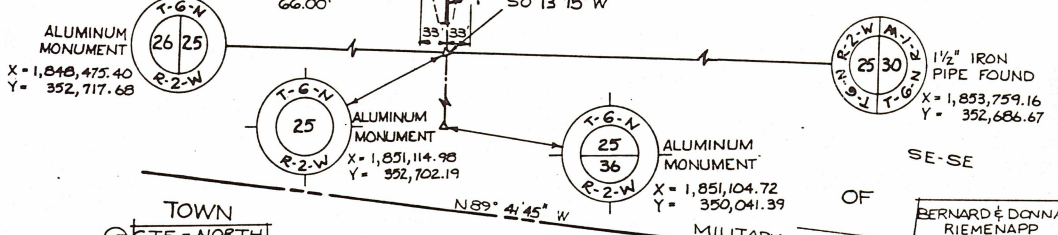
REVISION DATE 1-5-90 N.C. 8-18-92	ROUTE USH 18	COUNTY GRANT	DATE 10-13-89	R/W PROJECT NUMBER 1662-00-21	SHEET NUMBER 4.6
SCALE FT. 0 100 200			GRID FACTOR 0.999955	FEDERAL PROJECT NUMBER	

COURSE	BEARING	DISTANCE
A	S0°15'15"W	50.00'
B	S77°10'12"E	158.81'
C	N88°40'37"E	50.00'
D	N30°29'33"E	106.97'

NOTE: EXISTING HIGHWAY RIGHT-OF-WAY FOR ORR ROAD ESTABLISHED FROM THE N-S 1/4 LINE OF SECTION 25

CURVE DATA

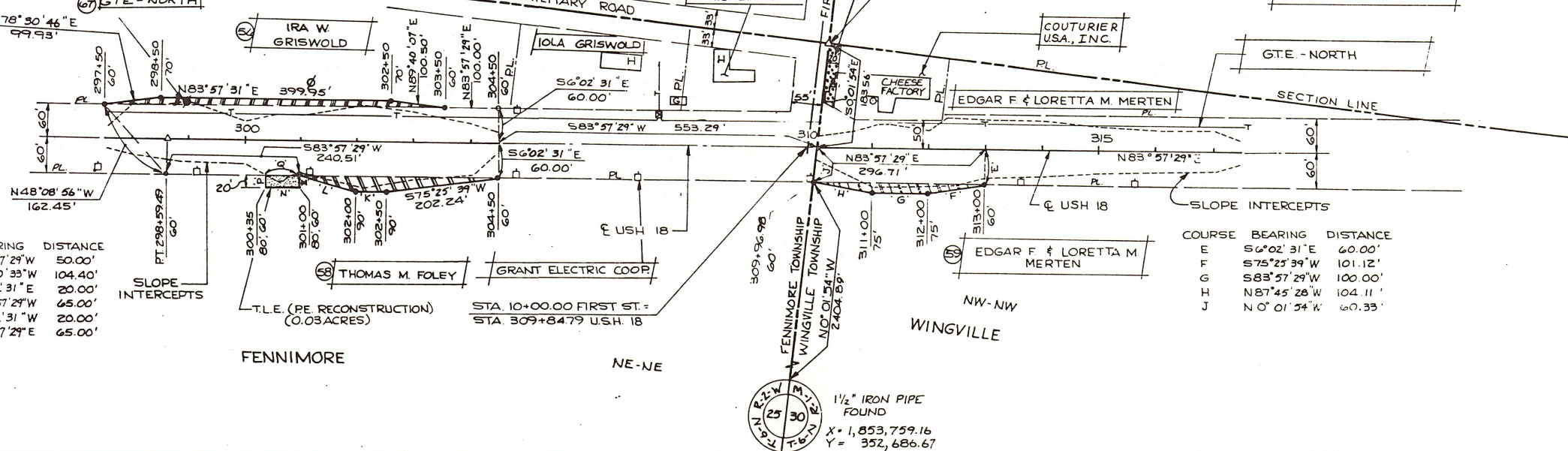
P.I. STA. 293+87.31
 $\Delta = 4^{\circ}43'28''$
 $D = 0^{\circ}30'$
 $R = 11,459.16'$
 $T = 472.72'$
 $L = 944.90'$
 P.C. STA. 289+14.59
 P.T. STA. 298+59.49
 $X = 1,852,150.33$
 $Y = 354,961.63$



0.06 ACRES SOLD TO COUTURIER U.S.A., INC. NOVEMBER 7, 1989 (PURCHASED UNDER PROJECT DJ 9573)

COURSE	BEARING	DISTANCE
K	S83°57'29"W	50.00'
L	N79°20'33"W	104.40'
M	S6°02'31"E	20.00'
N	S83°57'29"W	65.00'
P	N6°02'31"W	20.00'
Q	N83°57'29"E	65.00'

COURSE	BEARING	DISTANCE
E	S6°02'31"E	60.00'
F	S75°25'39"W	101.12'
G	S83°57'29"W	100.00'
H	N87°45'28"W	104.11'
J	N0°01'34"W	60.33'



REVISION DATE 1-5-90 NC. 8-18-92	ROUTE USH 18	COUNTY GRANT	DATE 10-13-89	R/W PROJECT NUMBER 1662 00-21	SHEET NUMBER 4-7
SCALE FT 0 100 200			GRID FACTOR 0.999955		

NOTE: EXISTING HIGHWAY RIGHT-OF-WAY FOR CTH 'G' ESTABLISHED FROM THE EXISTING CL OF CTH 'G'.
EXISTING HIGHWAY RIGHT-OF-WAY FOR BETHEL ROAD ESTABLISHED FROM THE EXISTING CL OF BETHEL ROAD.

NOTE: EXISTING HIGHWAY RIGHT-OF-WAY FOR OLD 18 ROAD ESTABLISHED FROM THE E-W 1/4 LINE OF SECTION 25.

COURSE	BEARING	DISTANCE	COURSE	BEARING	DISTANCE
A	N89°44'50"W	100.00'	J	S 6°36'14"W	50.32'
B	S40°41'50"W	131.55'	K	N89°51'44"W	71.33'
C	S89°36'12"W	64.00'	L	N 0°08'16"E	100.00'
D	N50°35'01"W	127.25'	M	S 89°51'44"E	77.00'
E	N 0°13'35"W	250.03'	N	S 0°08'16"W	50.00'
F	N 0°13'35"W	942'			

CURVE DATA

PI. STA. 8+41.68 OLD 18 ROAD
X=1881,382.19
Y=352,399.85
Δ=56°21'24"
D=20°00'00"
R=286.48'
L=281.78'
T=153.47'
LC=270.56'
PC=STA 6+88.21
PT=STA 9+69.99

CURVE DATA

PI. STA. 596+35.69
X=1881,869.74
Y=352,397.91
Δ=21°12'42"
D=2'00"
R=2864.79'
L=1060.58'
T=536.43'
PC. STA. 590+99.26
PT. STA. 601+59.84

COURSE	BEARING	DISTANCE
F	N24°46'12"E	34.07'
G	N24°46'12"E	164.91'
H	N24°46'12"E	50.08'

