

* DENOTES INTEREST IN SQUARE FEET

SCHEDULE OF LANDS & INTERESTS REQUIRED

PARCEL NUMBER	SHEET NUMBER	OWNER (S)	INTEREST REQUIRED	TOTAL ACRES OR S.F.	R/W ACRES OR S.F. REQUIRED	TOTAL ACRES OR S.F. REM.	T.I., P.L.E. ACRES
1	4.5	RICHARD & JUDIE BELLMAYER	ACCESS RIGHTS	90.32	---	0.00	90.32
2	4.5	DAIRYLAND POWER COOPERATIVE	ACCESS RIGHTS	1.00	---	0.00	1.00
3	4.5,4.6	PATRICK J. GEORGE	FEE, T.I. & ACCESS RIGHTS	40.00	1.75	3.55	36.65 0.53
4	4.5,4.6	SOUTHWEST EQUESTRIAN CENTER, LLC	FEE, T.I. & ACCESS RIGHTS	10.00	0.14	1.02	8.98 0.64
5							
6	4.5,4.6	BUILDING EXCHANGE COMPANY	FEE & ACCESS RIGHTS	52.00	20.55	21.12	40.88
7	4.5	DAVID & SUELLA LORY	FEE & ACCESS RIGHTS	48.00	0.23	0.38	47.62
8	4.6,4.7	WILLIAM & DEBRA MEIS	FEE, P.L.E., T.I. & ACCESS RIGHTS	157.68	10.42	11.14	156.54 1.64 (T.I.) 0.09 (P.L.E.)
9	4.6,4.8	KLINGE FAMILY, LLC	FEE, T.I. & ACCESS RIGHTS	176.00	17.36	18.21	157.79 0.28
10							
11	4.7,4.9	ROBERT A. DIGMAN & ROSELYN DIGMAN	FEE, T.I. & ACCESS RIGHTS	193.40	1.57	2.10	191.30 1.22
12	4.7	ROSELYN M. DIGMAN	FEE & ACCESS RIGHTS	2.40	1.21	1.21	1.19
13	4.8, 4.9	KENT & MARY ANN SANDER	FEE, T.I. & ACCESS RIGHTS	80.00	26.03	26.56	53.44 0.15
14	4.8	IREANE GOKE LANDIS	FEE & ACCESS RIGHTS	75.00	0.57	0.57	74.43
15							
16	4.9, 4.10	RICHARD & JUDIE BELLMAYER	FEE	131.80	8.67	8.67	123.13
17	4.10	LARRY & GARY SANDER, KAREN BILLER, SHARON KRINNER	FEE & T.I.	40.00	8.49	8.89	31.11 0.02
18	4.10-4.12	MELVIN L. REIGE	FEE, T.I. & ACCESS RIGHTS	87.26	12.99	13.38	73.88 0.24
19	4.11-4.13	JAMES & ANN KEMINK	FEE, P.L.E., T.I. & ACCESS RIGHTS	69.39	32.10	33.31	36.08 0.09 (T.I.) 0.12 (P.L.E.)
20							
21	4.11-4.12	MARK & EUGENE IHM	FEE, T.I. & ACCESS RIGHTS	5.68	1.00	1.00	4.68 1.18
22	4.11-4.12	WISCONSIN POWER & LIGHT COMPANY	H.E., T.I. & ACCESS RIGHTS	142,876.80*	115.63*	115.63*	142,761.17* 0.35
23	4.12	MELODY LODGE NO. 2 FREE & ACCEPTED MASONS	FEE, T.I. & ACCESS RIGHTS	54,450*	227.20*	227.20*	54,222.80* 0.27
24	4.10-4.12	FARM & FLEET OF PLATTEVILLE, INC.	FEE & ACCESS RIGHTS	12.02	0.98	0.98	11.04
25	4.12	SOUTHWEST HEALTH CENTER, INC.	FEE	29.60	0.16	0.41	29.19
26	4.10,4.12	WILLIAM & HARRIEF WILLIAMS	FEE & T.I. & ACCESS RIGHTS	132.89	0.22	0.22	132.67 0.13
27	4.12,4.14	JAMES & DORIS HARMS	FEE	127.28	0.45	0.67	126.61
28	4.11-4.14	JOEL P. STREICH	FEE, T.I. & ACCESS RIGHTS	110.08	23.56	25.12	84.96 0.03
29	4.11,4.13	SHERWIN TRUST	FEE & ACCESS RIGHTS	5.00	1.15	1.73	3.27
30							
31	4.13	ROBERT A. & ROSELYN DIGMAN	FEE & ACCESS RIGHTS	199.90	2.67	3.44	196.46
32	4.13	AARON & AMANDA PRZYBYLSKI	FEE & ACCESS RIGHTS	0.42	0.06	0.15	0.27
33	4.13	LEILA SUGDEN & MARILYN WEIGEL	FEE & ACCESS RIGHTS	119.68	3.34	3.98	115.70
34	4.13	DAVID & BELINDA PRZYBYLSKI	FEE, T.I. & ACCESS RIGHTS	4.92	0.17	0.52	4.23 0.16
35							
36	4.14	MARGARET ANN WEIGEL, VENDOR THOMAS C. & KELLI M. WEIGEL, VENDEE	FEE	207.44	12.81	12.81	194.63
37	4.14-4.15	DONALD & CHERYL SKAIFE	FEE & T.I.	89.26	14.57	15.89	73.37 0.69
38	4.15	PROFESSIONAL PROPERTIES, LLC	FEE	40.00	0.18	0.52	39.48
39	4.15-4.17	MARSHALL & SHELIA HARMS	FEE, T.I. & ACCESS RIGHTS	213.25	41.09	43.07	170.18 0.15
40							
41	4.16	DARRELL & PAULINE HENRY	FEE, T.I. & ACCESS RIGHTS	6.00	0.18	0.18	5.82 0.01
42	4.17	GEORGE C. OLTHAFER IRREVOCABLE TRUST	FEE	101.00	0.15	0.15	100.85
43	4.17	ROBERT VOIGTS	FEE, T.I. & ACCESS RIGHTS	80.00	0.29	0.29	79.71 0.02
44							
71	4.5,4.7, 4.16-4.17	SCENIC RIVERS ENERGY COOPERATIVE	RELEASE OF RIGHTS	---	---	---	---
72	4.6	NORTHERN NATURAL GAS COMPANY	RELEASE OF RIGHTS	---	---	---	---
73	4.6, 4.10-4.13	ALLIANT ENERGY CORPORATION	RELEASE OF RIGHTS	---	---	---	---
74							
75							
76	4.10,4.12 & 4.14	AMERICAN TRANSMISSION COMPANY	RELEASE OF RIGHTS	---	---	---	---
77	4.6-4.7, 4.10-4.11, 4.13, 4.15-4.17	CENTURYTEL OF MIDWEST -WI, INC.	RELEASE OF RIGHTS	---	---	---	---

REVISION DATE: 9-6-2002
2-3-2003

AREAS SHOWN IN THE TOTAL ACRES COLUMN MAY BE APPROXIMATE AND ARE DERIVED FROM TAX ROLLS OR OTHER AVAILABLE SOURCES AND MAY NOT INCLUDE LANDS OF THE OWNER WHICH ARE NOT CONTIGUOUS TO THE AREA TO BE ACQUIRED.

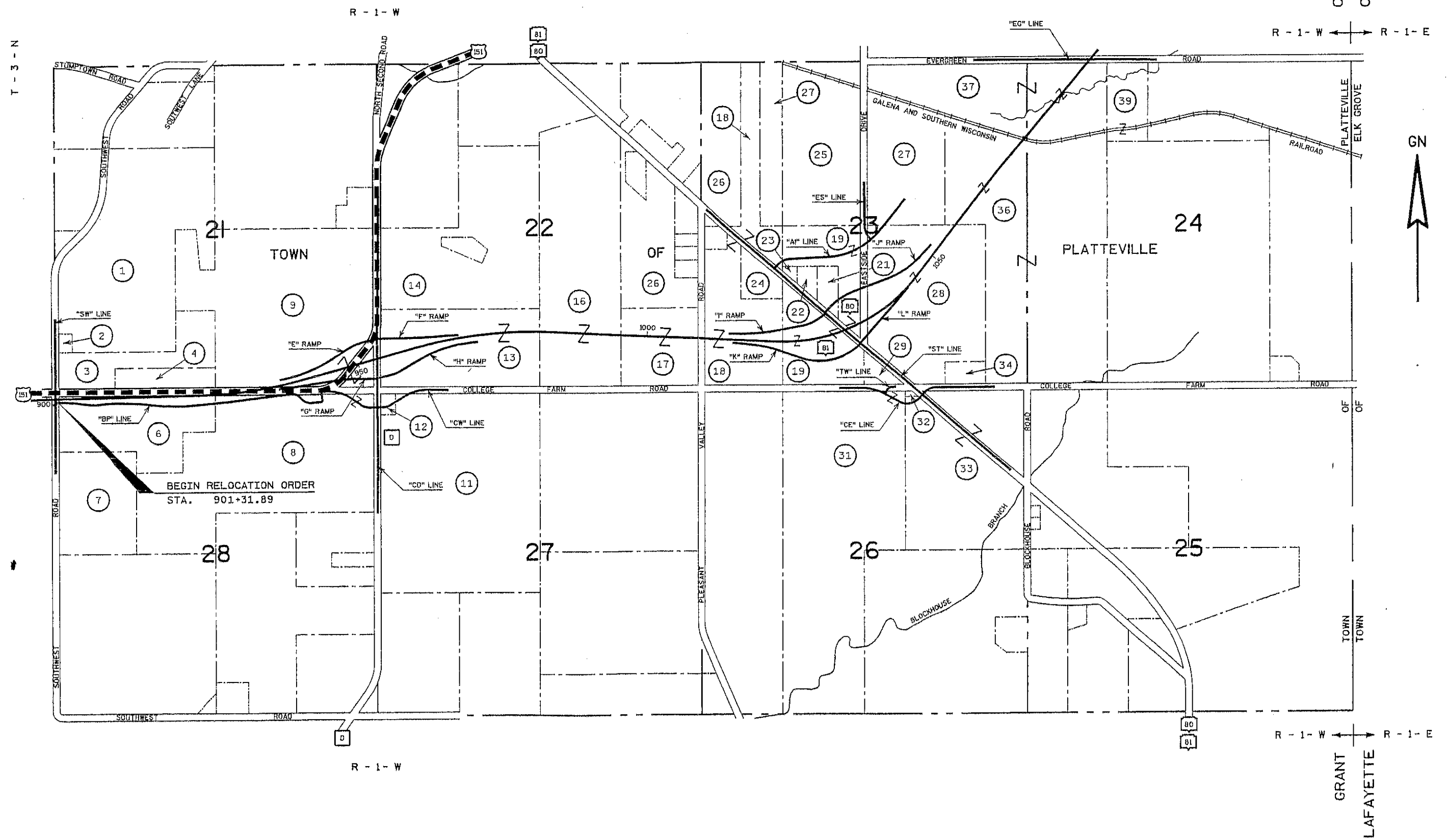
DATE: 11-14-2001

HIGHWAY: S.T.H. 151

R/W PROJECT NUMBER: 1209-02-23

SHEET NUMBER: 4.2

E



COUNTY
COUNTY

R - 1 - W ← → R - 1 - E



T - 3 - N

T - 3 - N

BEGIN RELOCATION ORDER
STA. 901+31.89

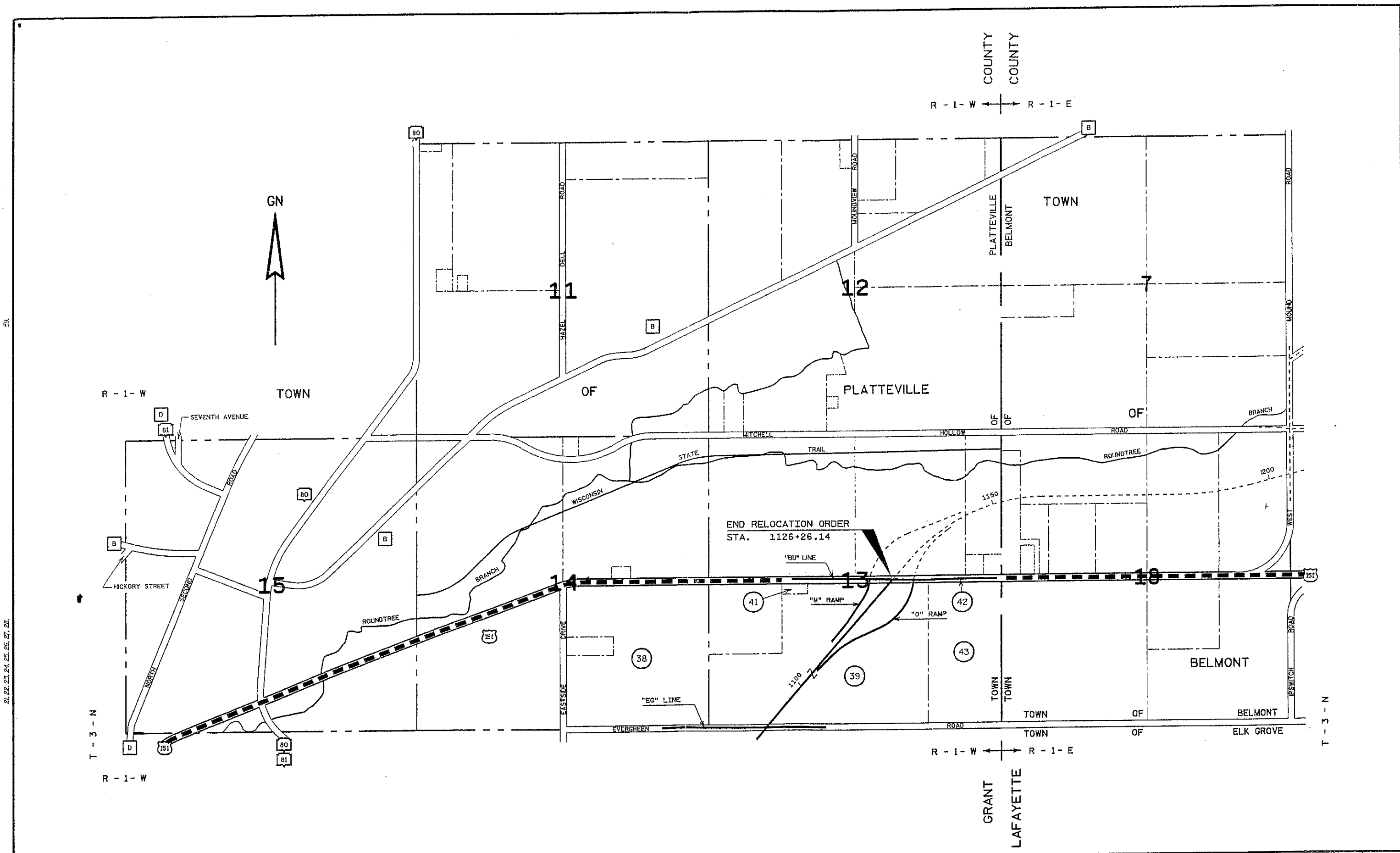
R - 1 - W ← → R - 1 - E

GRANT
LAFAYETTE

59

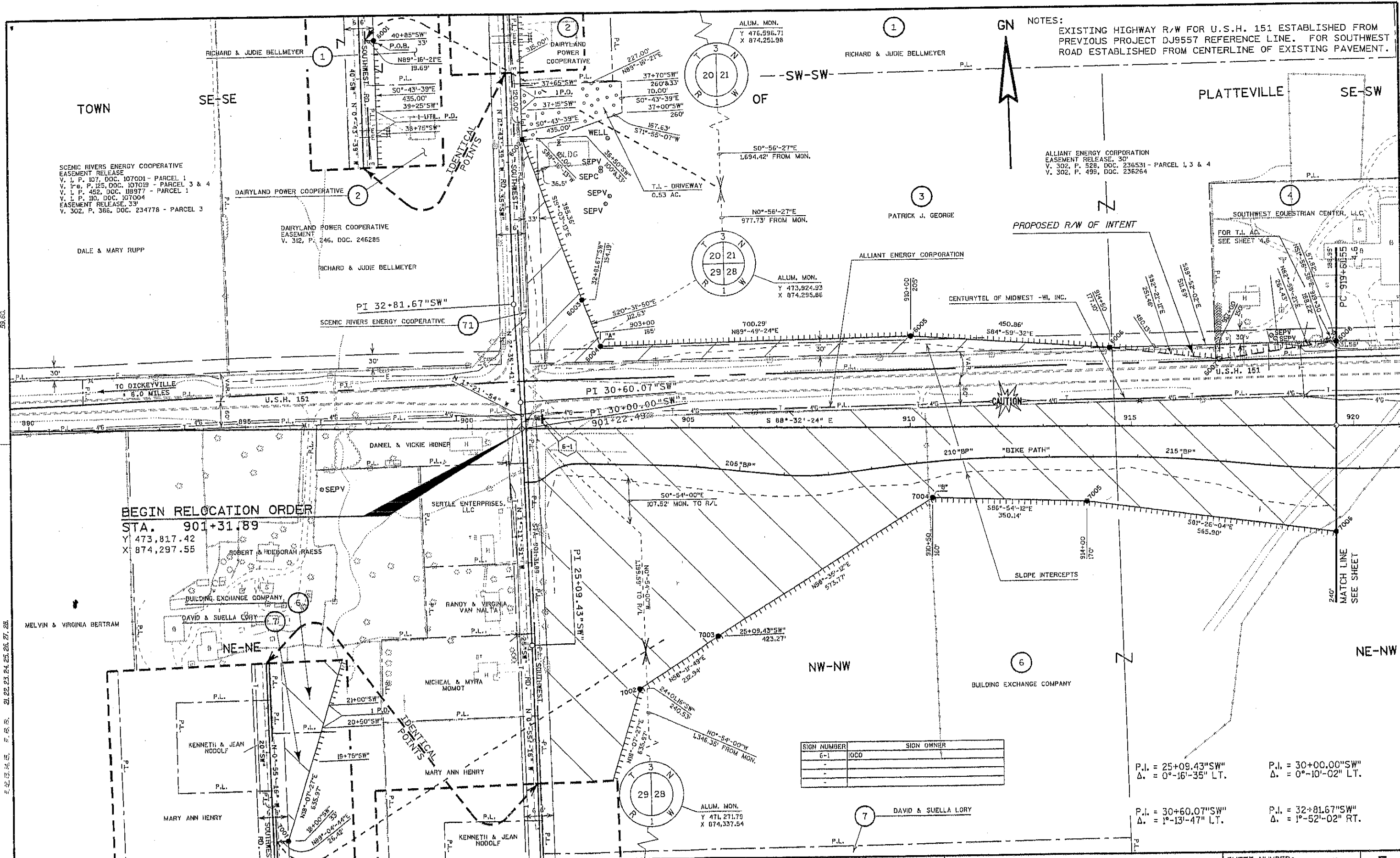
21, 22, 23, 24, 25, 26, 27, 28

REVISION DATE: 9-6-2002 2-3-2003	NOT TO SCALE	DATE: 11-14-2001	HIGHWAY: U.S.H. 151	R/W PROJECT NUMBER: 1209-02-23	SHEET NUMBER: 4.3	E
			COUNTY: GRANT	FEDERAL PROJECT NUMBER:		
FILE NAME : DI12090223040301	ORIGINATOR : PGG/DJD/CLM	PLOT NAME :	PLOT SCALE :	PLOT DATE: 03-FEB-2003 10:37	WISDOT/CADD SHEET 70	



REVISION DATE:	9-6-2002 N.C. 2-3-2003 N.C.	DATE:	11-14-2001	HIGHWAY:	U.S.H. 151	R/W PROJECT NUMBER:	1209-02-23	SHEET NUMBER:	4.4	E
NOT TO SCALE		COUNTY:	GRANT	FEDERAL PROJECT NUMBER:						

GN NOTES:
 EXISTING HIGHWAY R/W FOR U.S.H. 151 ESTABLISHED FROM PREVIOUS PROJECT DJ9557 REFERENCE LINE. FOR SOUTHWEST ROAD ESTABLISHED FROM CENTERLINE OF EXISTING PAVEMENT.



BEGIN RELOCATION ORDER
 STA. 901+31.89
 Y 473,817.42
 X 874,297.55

SIGN NUMBER	SIGN OWNER
6-1	10CO
-	-
-	-

P.I. = 25+09.43"SW"
 Δ. = 0°-16'-35" LT.

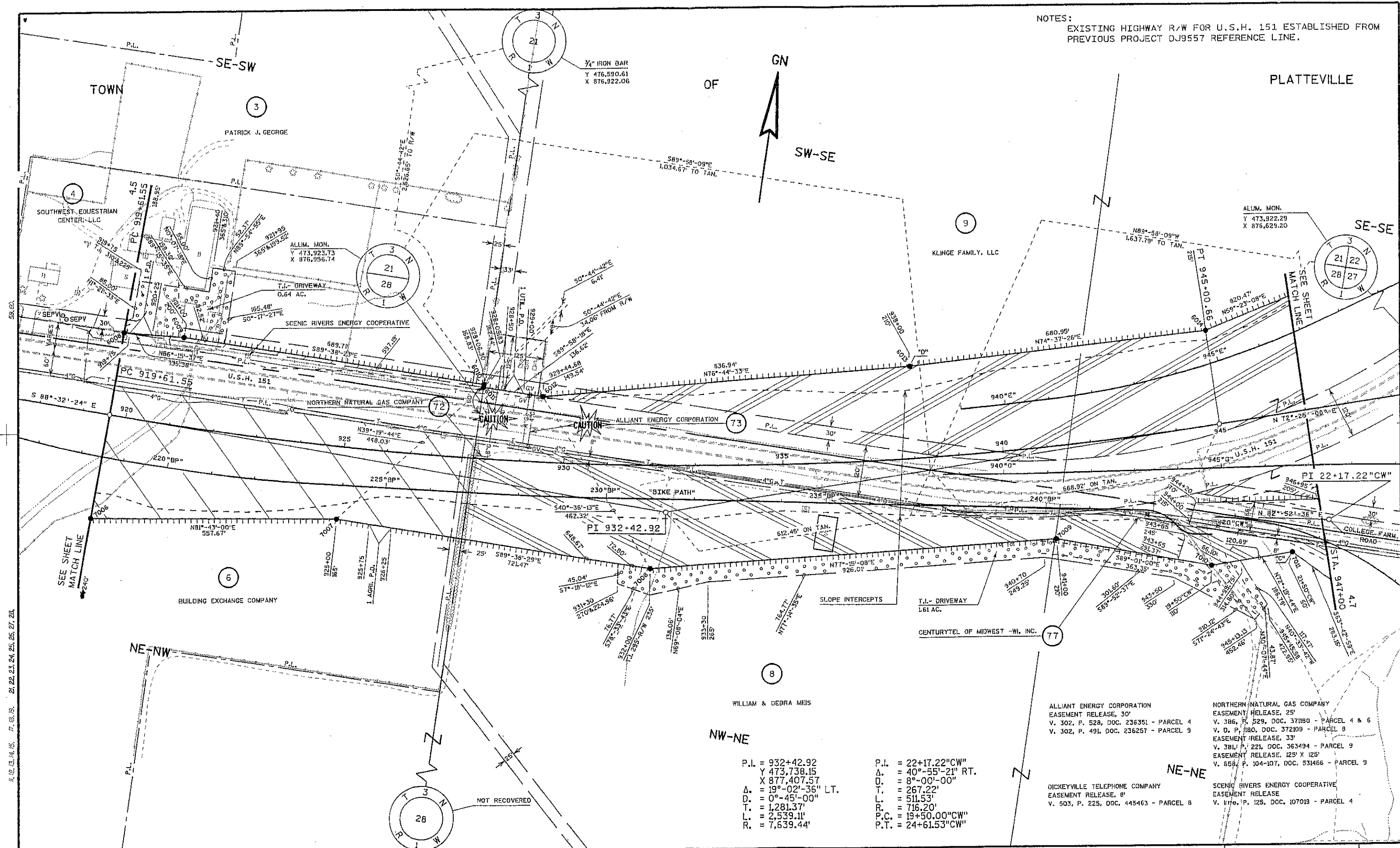
P.I. = 30+00.00"SW"
 Δ. = 0°-10'-02" LT.

P.I. = 30+60.07"SW"
 Δ. = 1°-13'-47" LT.

P.I. = 32+81.67"SW"
 Δ. = 1°-52'-02" RT.

REVISION DATE:	9-6-2002 2-3-2003	SCALE, FEET:	0 100 200	DATE:	11-14-2001	HIGHWAY:	U.S.H. 151	R/W PROJECT NUMBER:	1209-02-23	SHEET NUMBER:	4.5	E
GRID FACTOR:	N.A.	COUNTY:	GRANT	FEDERAL PROJECT NUMBER:								

NOTES:
EXISTING HIGHWAY R/W FOR U.S.H. 151 ESTABLISHED FROM
PREVIOUS PROJECT DJ9557 REFERENCE LINE.



P.I. = 932+42.92
Y 473,738.15
X 877,407.57
Δ = 19°-02'-36" LT.
D. = 0°-45'-00"
T. = 1,281.37'
L. = 2,539.11'
R. = 7,639.44'

P.I. = 22+17.22"CW"
Δ. = 40°-55'-21" RT.
D. = 8°-00'-00"
T. = 267.22'
L. = 511.53'
R. = 716.20'
P.C. = 19+50.00"CW"
P.T. = 24+61.53"CW"

ALLIANT ENERGY CORPORATION
EASEMENT RELEASE, 30'
V. 302, P. 528, DOC. 236351 - PARCEL 4
V. D. P. 280, DOC. 372109 - PARCEL 8
V. 302, P. 491, DOC. 236257 - PARCEL 9

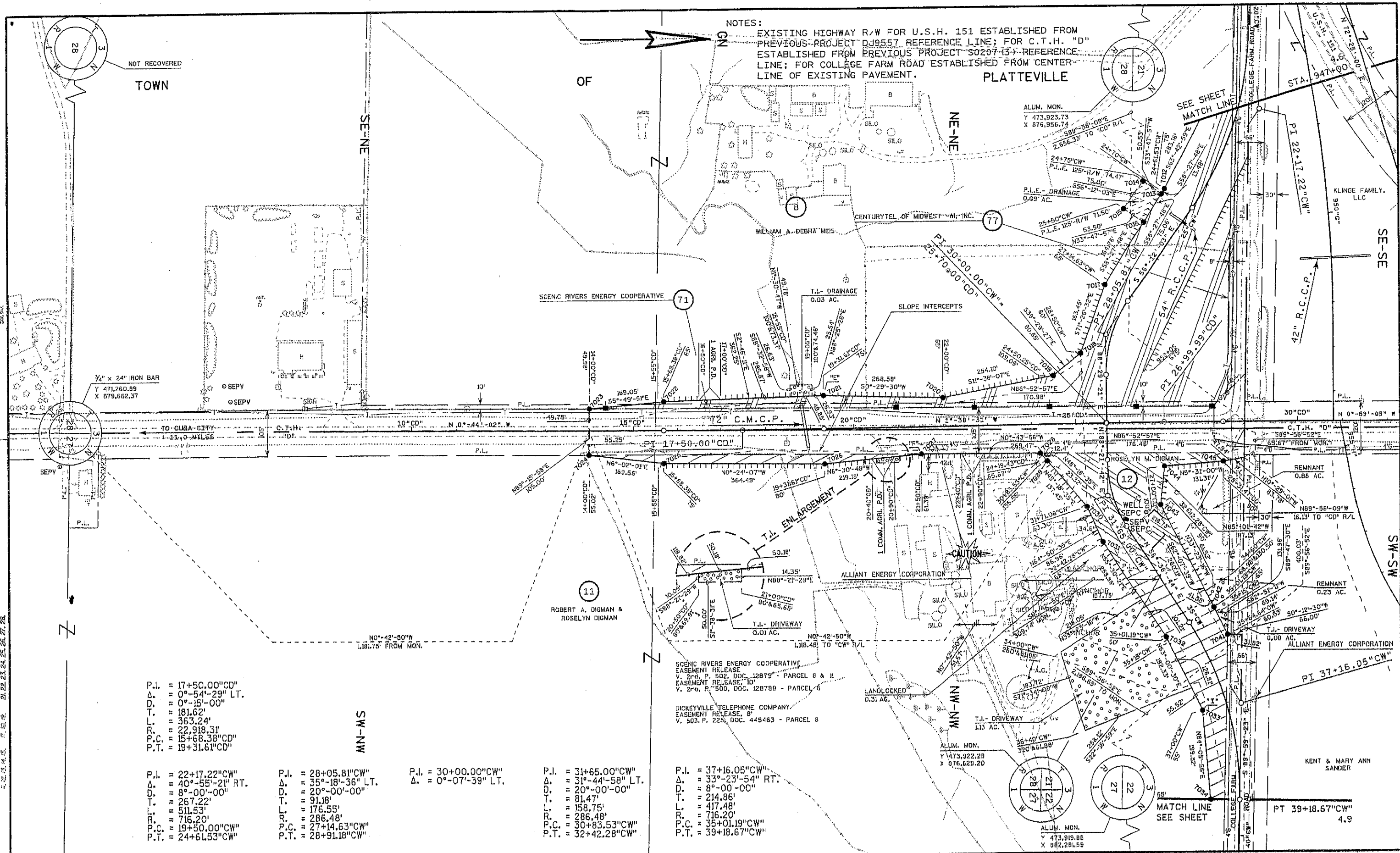
NORTHERN NATURAL GAS COMPANY
EASEMENT RELEASE, 25'
V. 386, P. 529, DOC. 371180 - PARCEL 4 & 6
V. D. P. 280, DOC. 372109 - PARCEL 8
EASEMENT RELEASE, 33'
V. 381, P. 221, DOC. 363494 - PARCEL 9
EASEMENT RELEASE, 125' X 125'
V. 658, P. 104-107, DOC. 531466 - PARCEL 9

DICKEYVILLE TELEPHONE COMPANY
EASEMENT RELEASE, 8'
V. 503, P. 225, DOC. 445463 - PARCEL 8

SCENIC RIVERS ENERGY COOPERATIVE
EASEMENT RELEASE
V. 1176, P. 125, DOC. 107019 - PARCEL 4

LEVELS ON - 21, 22, 23, 24, 25, 26, 27, 28.

REVISION DATE: 9-6-2002 2-3-2003	SCALE, FEET: 0 100 200	DATE: 11-14-2001	HIGHWAY: U.S.H. 151	R/W PROJECT NUMBER: 1209-02-23	SHEET NUMBER: 4.6	E
		GRID FACTOR: N/A	COUNTY: GRANT	FEDERAL PROJECT NUMBER:		



NOTES:
 EXISTING HIGHWAY R/W FOR U.S.H. 151 ESTABLISHED FROM PREVIOUS PROJECT DJ9557 REFERENCE LINE; FOR C.T.H. "D" ESTABLISHED FROM PREVIOUS PROJECT S0207-13 REFERENCE LINE; FOR COLLEGE FARM ROAD ESTABLISHED FROM CENTER-LINE OF EXISTING PAVEMENT.

PLATTEVILLE

TOWN

OF

P.I. = 17+50.00 CD
 Δ = 0°-54'-29" LT.
 D. = 0°-15'-00"
 T. = 181.62'
 L. = 363.24'
 R. = 22,918.31'
 P.C. = 15+68.38 CD
 P.T. = 19+31.61 CD

P.I. = 22+17.22 CW
 Δ = 40°-55'-21" RT.
 D. = 8°-00'-00"
 T. = 267.22'
 L. = 511.53'
 R. = 716.20'
 P.C. = 19+50.00 CW
 P.T. = 24+61.53 CW

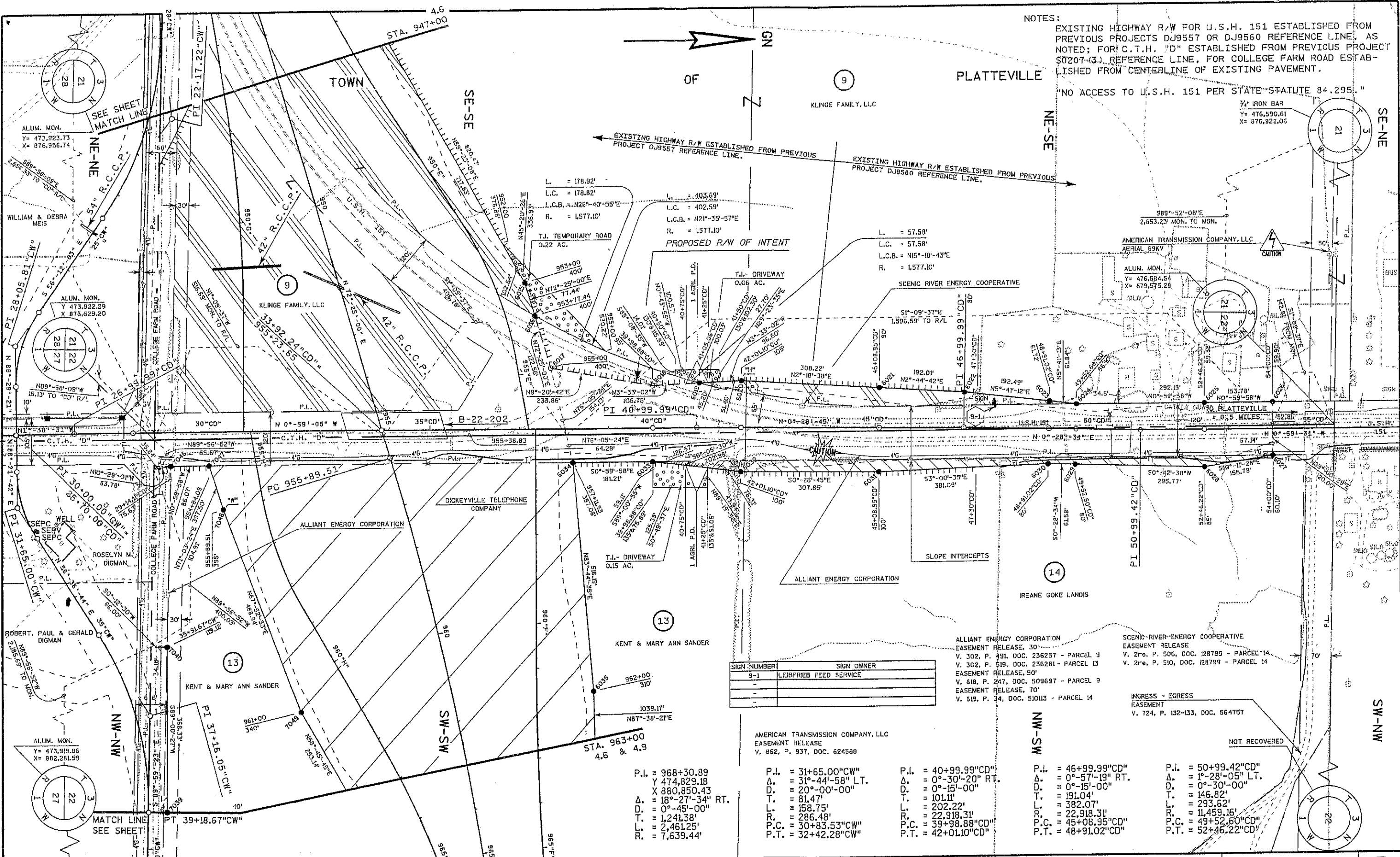
P.I. = 28+05.81 CW
 Δ = 35°-18'-36" LT.
 D. = 20°-00'-00"
 T. = 91.18'
 L. = 176.55'
 R. = 286.48'
 P.C. = 27+14.63 CW
 P.T. = 28+91.18 CW

P.I. = 30+00.00 CW
 Δ = 0°-07'-39" LT.

P.I. = 31+65.00 CW
 Δ = 31°-44'-58" LT.
 D. = 20°-00'-00"
 T. = 81.47'
 L. = 158.75'
 R. = 286.48'
 P.C. = 30+83.53 CW
 P.T. = 32+42.28 CW

P.I. = 37+16.05 CW
 Δ = 33°-23'-54" RT.
 D. = 8°-00'-00"
 T. = 214.86'
 L. = 417.48'
 R. = 716.20'
 P.C. = 35+01.19 CW
 P.T. = 39+18.67 CW

REVISION DATE: 9-6-2002 2-3-2003 N.C.	SCALE, FEET: 0 100 200	DATE: 11-14-2001	HIGHWAY: U.S.H. 151	R/W PROJECT NUMBER: 1209-02-23	SHEET NUMBER: 4.7	E
GRID FACTOR: N/A			COUNTY: GRANT	FEDERAL PROJECT NUMBER:		



NOTES:
 EXISTING HIGHWAY R/W FOR U.S.H. 151 ESTABLISHED FROM PREVIOUS PROJECTS DJ9557 OR DJ9560 REFERENCE LINE, AS NOTED; FOR C.T.H. "D" ESTABLISHED FROM PREVIOUS PROJECT S0207-43J REFERENCE LINE, FOR COLLEGE FARM ROAD ESTABLISHED FROM CENTERLINE OF EXISTING PAVEMENT.
 "NO ACCESS TO U.S.H. 151 PER STATE STATUTE 84.295."

1/4" IRON BAR
 Y = 476,590.61
 X = 876,922.06

ALUM. MON.
 Y = 473,923.73
 X = 876,956.74

ALUM. MON.
 Y = 473,922.29
 X = 876,629.20

ALUM. MON.
 Y = 476,584.54
 X = 879,575.28

ALUM. MON.
 Y = 473,919.86
 X = 882,281.59

SIGN NUMBER	SIGN OWNER
9-1	LEIBFRIED FEED SERVICE

AMERICAN TRANSMISSION COMPANY, LLC
 EASEMENT RELEASE
 V. 862, P. 937, DOC. 624588

P.I. = 968+30.89
 Y = 474,829.18
 X = 880,850.43
 Δ = 18°-27'-34" RT.
 D. = 0°-45'-00"
 T. = 1,241.38'
 L. = 2,461.25'
 R. = 7,639.44'

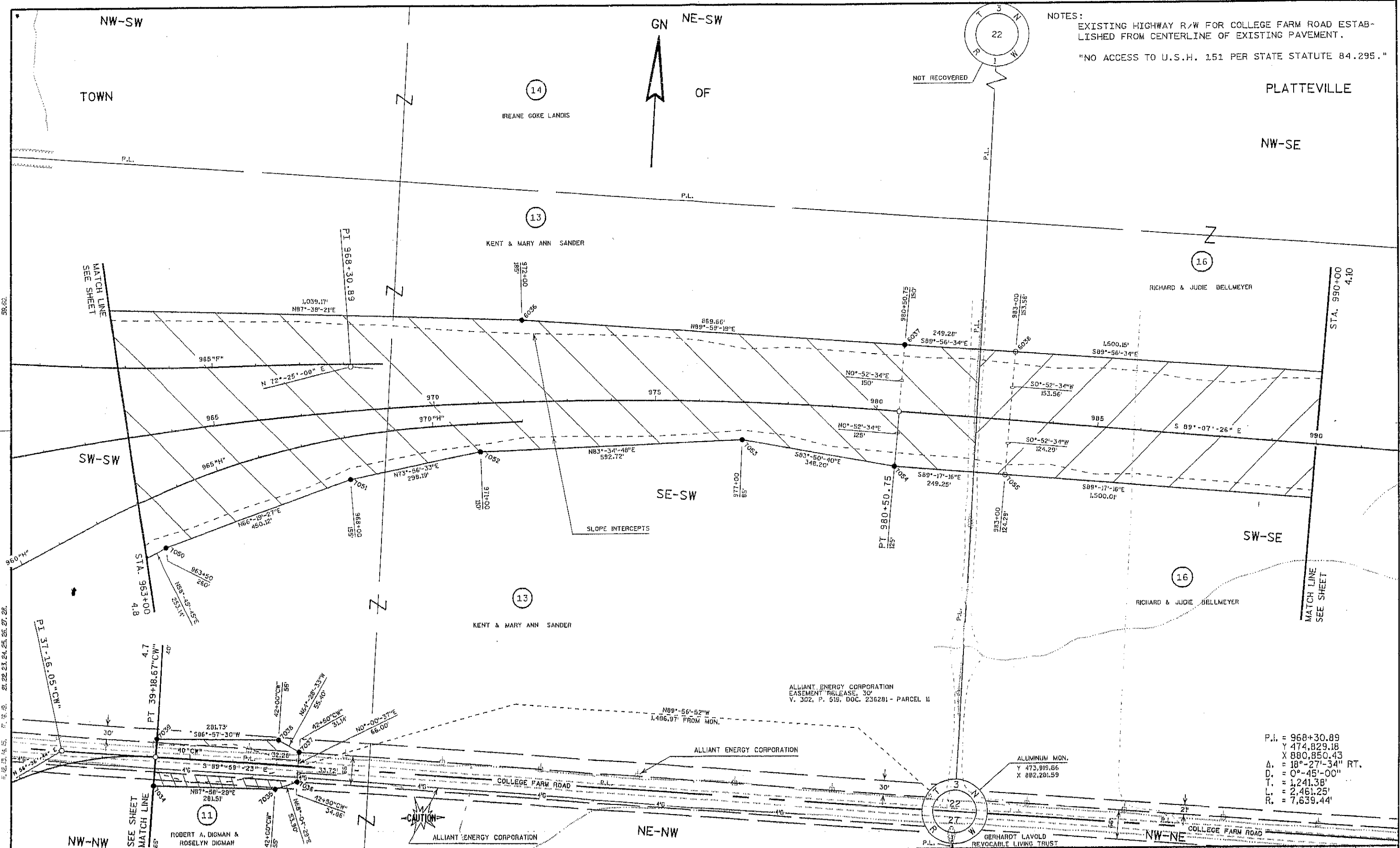
P.I. = 31+65.00"CW"
 Δ = 31°-44'-58" LT.
 D. = 20°-00'-00"
 T. = 81.47'
 L. = 158.75'
 R. = 286.48'
 P.C. = 30+83.53"CW"
 P.T. = 32+42.28"CW"

P.I. = 40+99.99"CD"
 Δ = 0°-30'-20" RT.
 D. = 0°-15'-00"
 T. = 101.11'
 L. = 202.22'
 R. = 22,918.31'
 P.C. = 39+98.88"CD"
 P.T. = 42+01.10"CD"

P.I. = 46+99.99"CD"
 Δ = 0°-57'-19" RT.
 D. = 0°-15'-00"
 T. = 191.04'
 L. = 382.07'
 R. = 22,918.31'
 P.C. = 45+08.95"CD"
 P.T. = 48+91.02"CD"

P.I. = 50+99.42"CD"
 Δ = 1°-28'-05" LT.
 D. = 0°-30'-00"
 T. = 146.82'
 L. = 293.62'
 R. = 11,459.16'
 P.C. = 49+52.60"CD"
 P.T. = 52+46.22"CD"

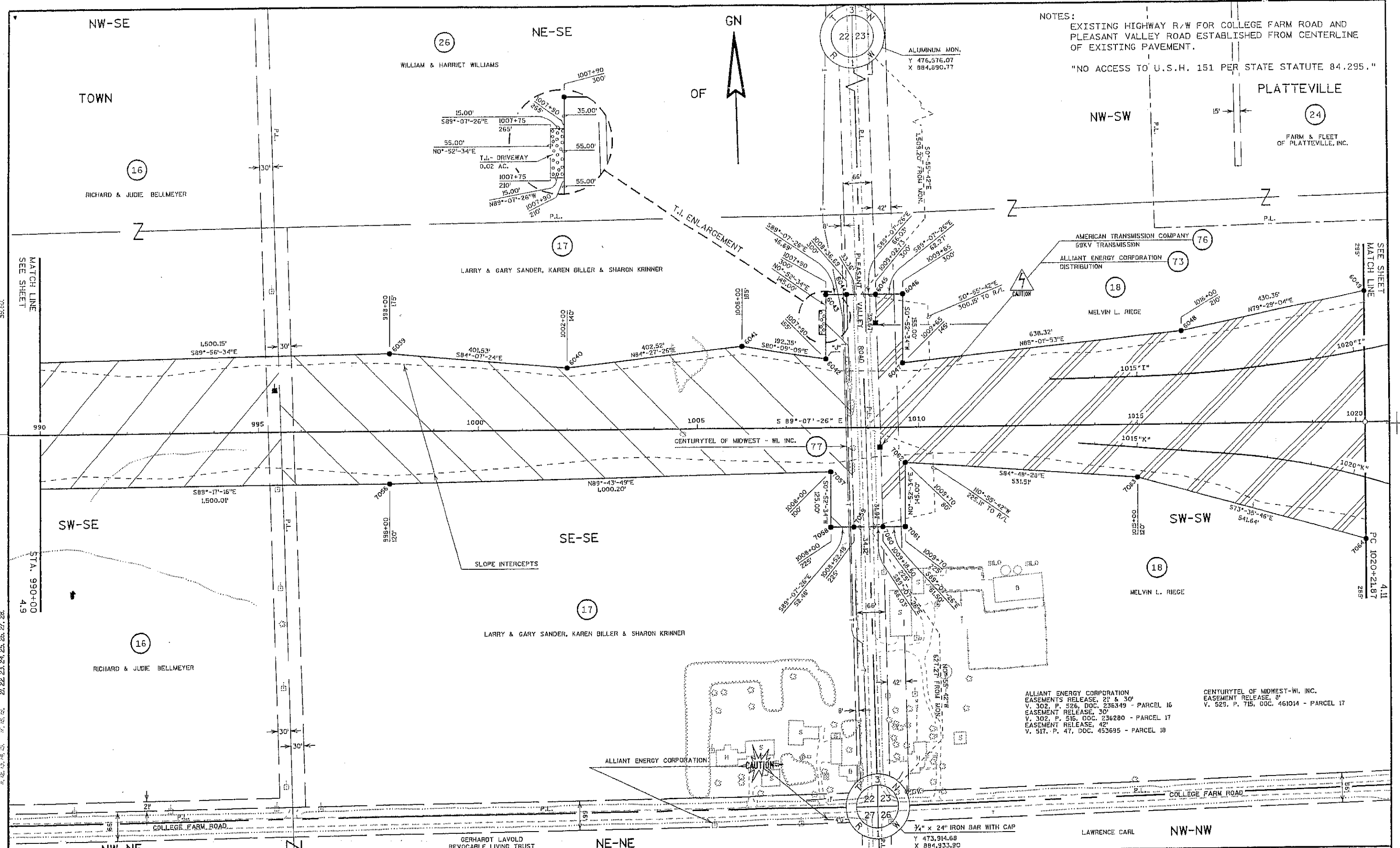
REVISION DATE: 9-6-2002 2-3-2003 N.C.	SCALE, FEET: 0 100 200	DATE: 11-14-2001	HIGHWAY: U.S.H. 151	R/W PROJECT NUMBER: 1209-02-23	SHEET NUMBER: 4.8
		GRID FACTOR: N/A	COUNTY: GRANT	FEDERAL PROJECT NUMBER:	E



NOTES:
 EXISTING HIGHWAY R/W FOR COLLEGE FARM ROAD ESTABLISHED FROM CENTERLINE OF EXISTING PAVEMENT.
 "NO ACCESS TO U.S.H. 151 PER STATE STATUTE 84.295."

P.I. = 968+30.89
 Y 474,829.18
 X 880,850.43
 Δ = 18°-27'-34" RT.
 D = 0°-45'-00"
 T = 1,241.38'
 L = 2,461.25'
 R = 7,639.44'

REVISION DATE: 9-6-2002 2-3-2003 N.C.	SCALE, FEET: 0 100 200	DATE: 11-14-2001	HIGHWAY: U.S.H. 151	R/W PROJECT NUMBER: 1209-02-23	SHEET NUMBER: 4.9	E
ORIGINATOR : PGB/DJD/C4C	GRID FACTOR: N/A	COUNTY: GRANT	FEDERAL PROJECT NUMBER:			

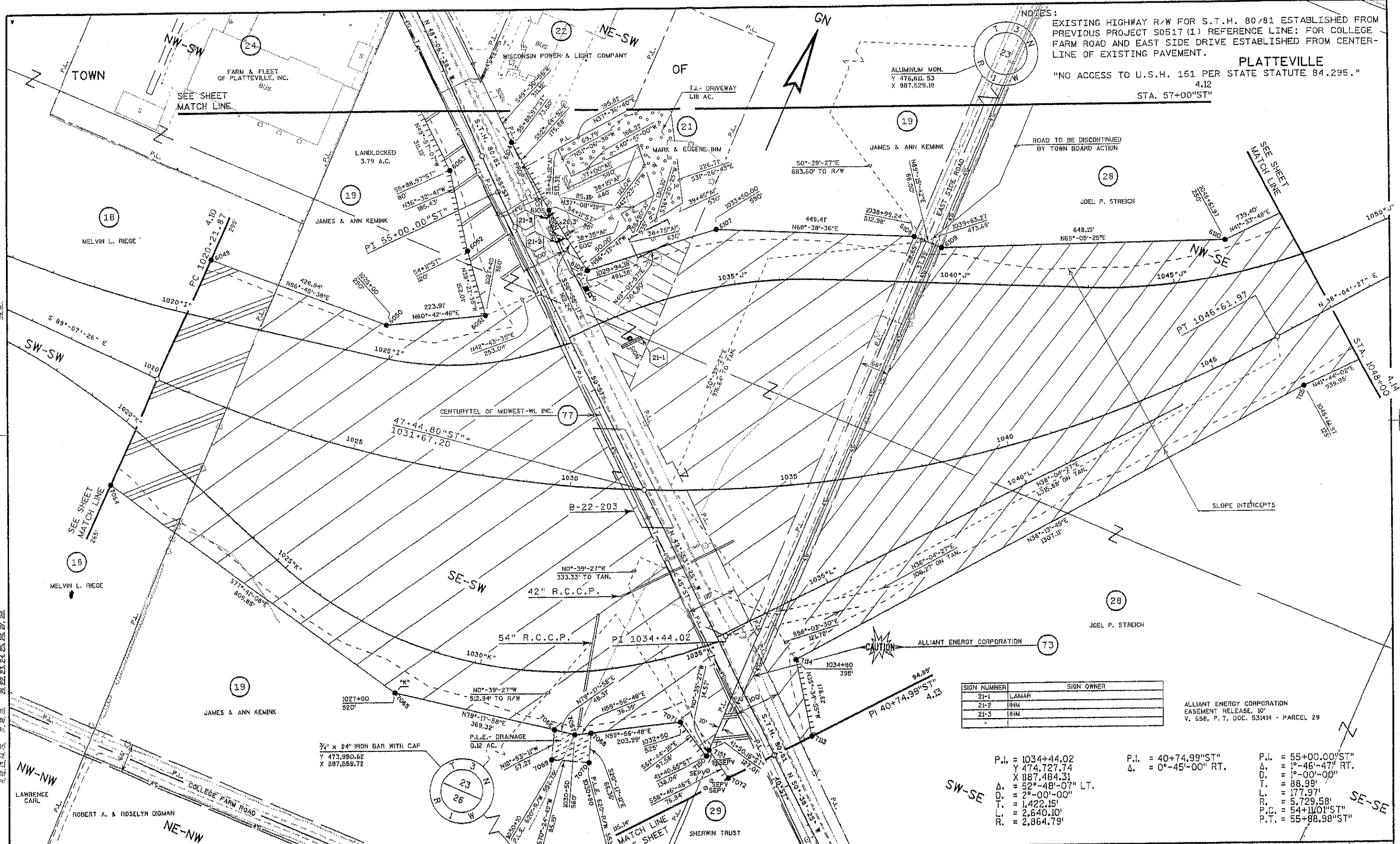


NOTES:
 EXISTING HIGHWAY R/W FOR COLLEGE FARM ROAD AND PLEASANT VALLEY ROAD ESTABLISHED FROM CENTERLINE OF EXISTING PAVEMENT.
 "NO ACCESS TO U.S.H. 151 PER STATE STATUTE 84.295."

LEVELS ON : 21, 22, 23, 24, 25, 26, 27, 28
 MATCH LINE SEE SHEET 4.9
 STA. 990+00
 4.9
 SEE SHEET MATCH LINE 4.11
 PC 1020+21.87
 285'

REVISION DATE:	9-6-2002 2-3-2003 N.C.	SCALE, FEET:	0 100 200	DATE:	11-14-2001	HIGHWAY:	U.S.H. 151	R/W PROJECT NUMBER:	1209-02-23	SHEET NUMBER:	4.10	E
GRID FACTOR:	N/A	COUNTY:	GRANT	FEDERAL PROJECT NUMBER:								

NOTES:
 EXISTING HIGHWAY R/W FOR S.T.H. 80/81 ESTABLISHED FROM PREVIOUS PROJECT S0517 (1) REFERENCE LINE; FOR COLLEGE FARM ROAD AND EAST SIDE DRIVE ESTABLISHED FROM CENTER-LINE OF EXISTING PAVEMENT.
PLATTEVILLE
 "NO ACCESS TO U.S.H. 151 PER STATE STATUTE 84.295."
 4.12
 STA. 57+00"ST"



SIGN NUMBER	SIGN OWNER
21-1	LAMAR
21-2	IHM
21-3	IHM

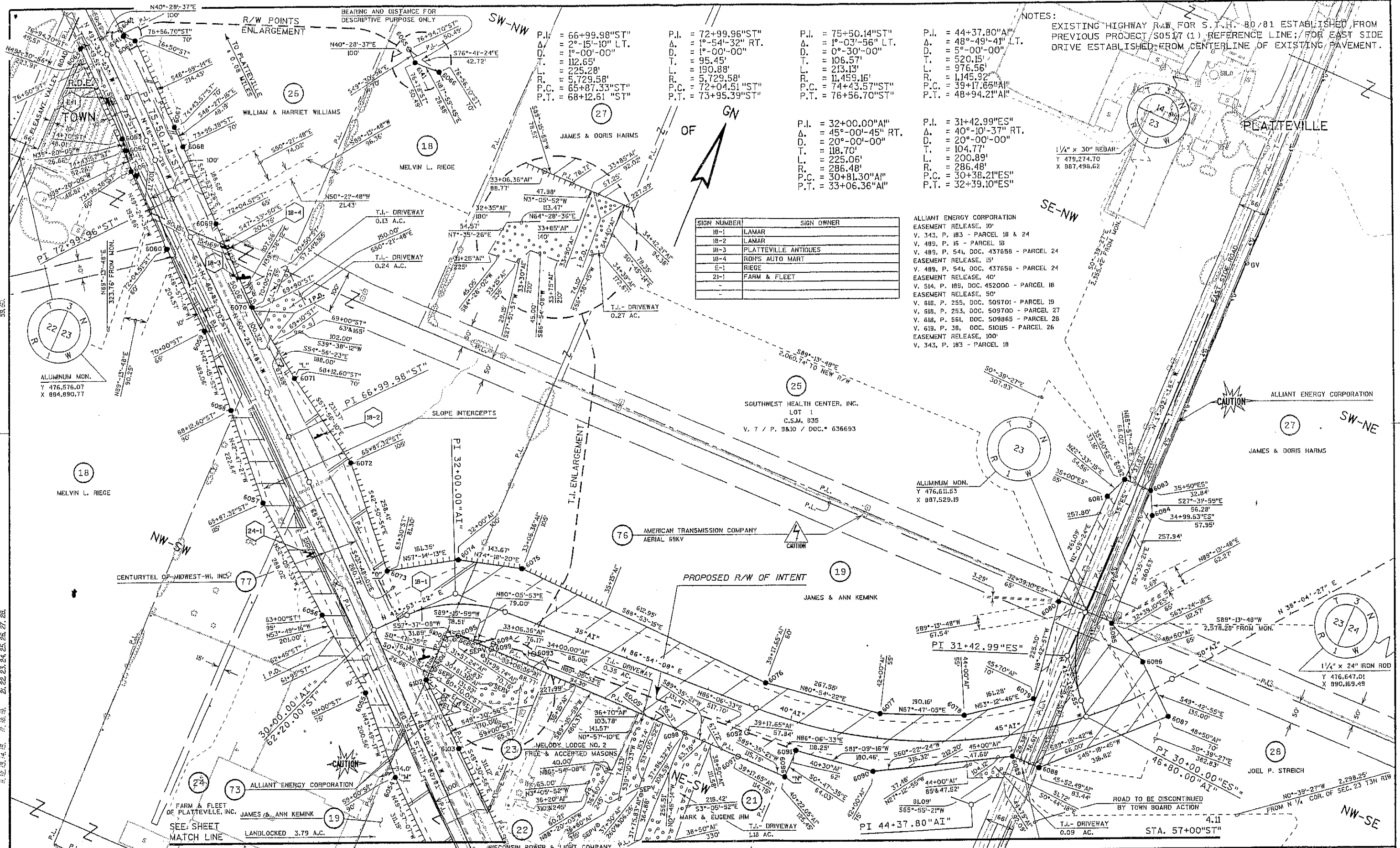
ALLIANT ENERGY CORPORATION
 EASEMENT RELEASE, 10'
 V. 658, P. 7, DOC. 531414 - PARCEL 29

P.I. = 1034+44.02
 Y 474,727.74
 X 887,484.31
 Δ = 52°-48'-07" LT.
 D. = 2°-00'-00"
 T. = 1,422.15'
 L. = 2,640.10'
 R. = 2,864.79'

P.I. = 40+74.99"ST"
 Δ = 0°-45'-00" RT.

P.I. = 55+00.00"ST"
 Δ = 1°-46'-47" RT.
 D. = 1°-00'-00"
 T. = 88.99'
 L. = 177.97'
 R. = 5,729.58'
 P.C. = 54+11/01"ST"
 P.T. = 55+88.98"ST"

REVISION DATE: 9-6-2002 2-3-2003 N.C.	SCALE, FEET: 0 100 200	DATE: 11-14-2001	HIGHWAY: U.S.H. 151	R/W PROJECT NUMBER: 1209-02-23	SHEET NUMBER: 4.11 E
GRID FACTOR: N/A	ORIGINATOR: DOT/POB/DJD/C4C	COUNTY: GRANT	FEDERAL PROJECT NUMBER:	WISDOT/CADD SHEET 75	



BEARING AND DISTANCE FOR DESCRIPTIVE PURPOSE ONLY

P.I. = 66+99.98"ST"	P.I. = 72+99.96"ST"	P.I. = 75+50.14"ST"	P.I. = 44+37.80"AI"
Δ = 2°-15'-10" LT.	Δ = 1°-54'-32" RT.	Δ = 1°-03'-56" LT.	Δ = 48°-49'-41" LT.
D. = 1°-00'-00"	D. = 1°-00'-00"	D. = 0°-30'-00"	D. = 5°-00'-00"
T. = 112.65'	T. = 95.45'	T. = 106.57'	T. = 520.15'
L. = 225.28'	L. = 190.88'	L. = 213.13'	L. = 976.56'
R. = 5,729.58'	R. = 5,729.58'	R. = 11,459.16'	R. = 1,145.92'
P.C. = 65+87.33"ST"	P.C. = 72+04.51"ST"	P.C. = 74+43.57"ST"	P.C. = 39+17.66"AI"
P.T. = 68+12.61"ST"	P.T. = 73+95.39"ST"	P.T. = 76+56.70"ST"	P.T. = 48+94.21"AI"

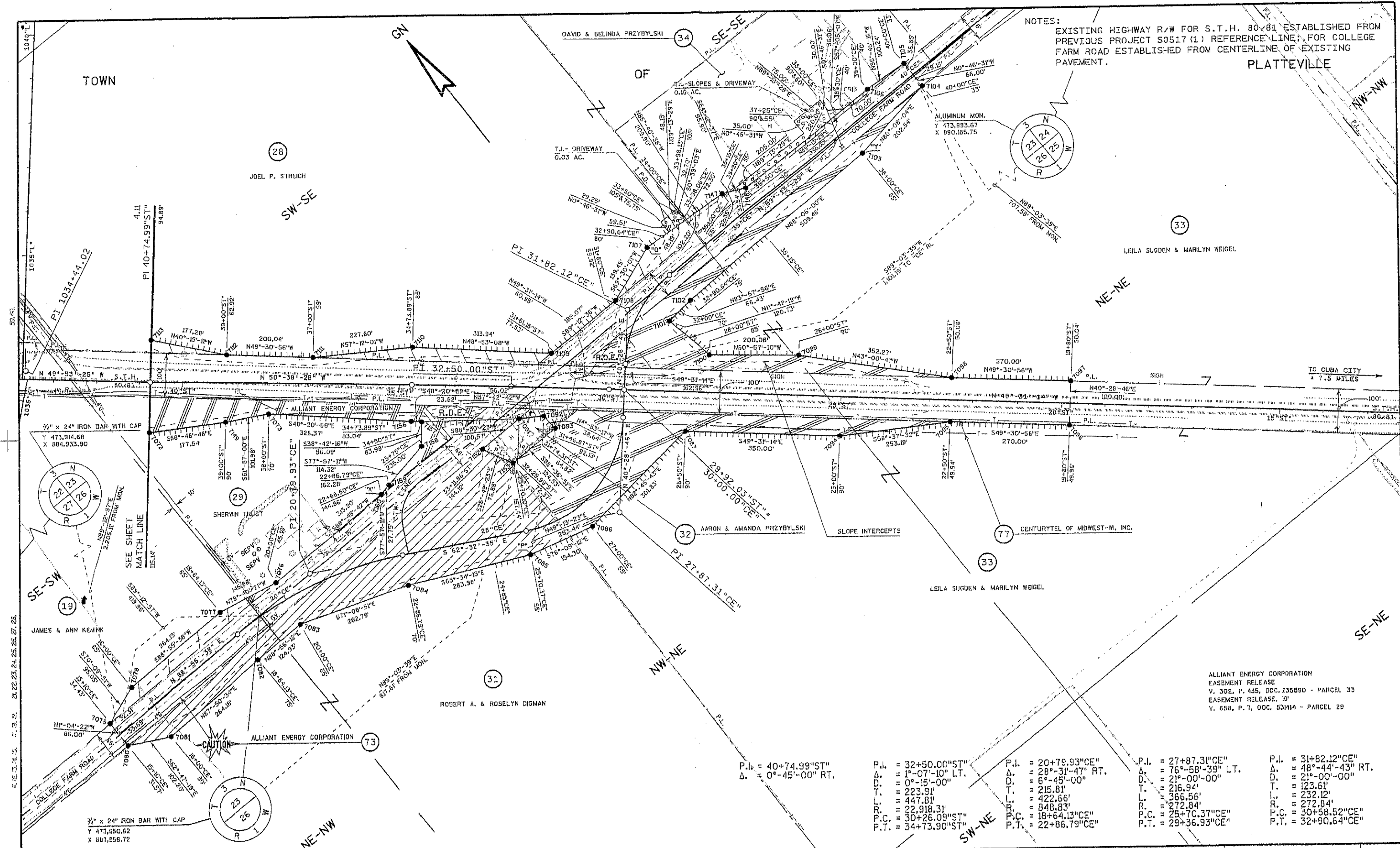
P.I. = 32+00.00"AI"	P.I. = 31+42.99"ES"
Δ = 45°-00'-45" RT.	Δ = 40°-10'-37" RT.
D. = 20°-00'-00"	D. = 20°-00'-00"
T. = 118.70'	T. = 104.77'
L. = 225.06'	L. = 200.89'
R. = 286.48'	R. = 286.48'
P.C. = 30+81.30"AI"	P.C. = 30+38.2"ES"
P.T. = 33+06.36"AI"	P.T. = 32+39.10"ES"

SIGN NUMBER	SIGN OWNER
18-1	LAMAR
18-2	LAMAR
18-3	PLATTEVILLE ANTIQUES
18-4	ROHS AUTO MART
E-1	RIEGE
21-1	FARM & FLEET

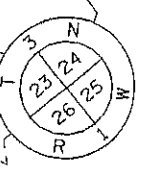
ALLIANT ENERGY CORPORATION
 EASEMENT RELEASE, 10'
 V. 343, P. 183 - PARCEL 10 & 24
 V. 489, P. 16 - PARCEL 18
 V. 489, P. 541, DOC. 437658 - PARCEL 24
 EASEMENT RELEASE, 15'
 V. 489, P. 541, DOC. 437658 - PARCEL 24
 EASEMENT RELEASE, 40'
 V. 514, P. 189, DOC. 452000 - PARCEL 18
 EASEMENT RELEASE, 50'
 V. 518, P. 255, DOC. 509701 - PARCEL 19
 V. 518, P. 253, DOC. 509700 - PARCEL 27
 V. 518, P. 561, DOC. 509865 - PARCEL 28
 V. 519, P. 38, DOC. 510115 - PARCEL 26
 EASEMENT RELEASE, 100'
 V. 343, P. 183 - PARCEL 10

NOTES:
 EXISTING HIGHWAY R/W FOR S.J.H. 80/81 ESTABLISHED FROM PREVIOUS PROJECT S0517 (1) REFERENCE LINE; FOR EAST SIDE DRIVE ESTABLISHED FROM CENTERLINE OF EXISTING PAVEMENT.

REVISION DATE: 9-6-2002 2-3-2003	SCALE, FEET: 0 100 200	DATE: 11-14-2001	HIGHWAY: U.S.H. 151	R/W PROJECT NUMBER: 1209-02-23	SHEET NUMBER: 4.12 E
ORIGINATOR: DOT/PG&B/D/C4C	PLOT NAME:	GRID FACTOR: N/A	COUNTY: GRANT	FEDERAL PROJECT NUMBER:	WISDOT/CADD SHEET 75
FILE NAME: D12090223:040408	PLAT SCALE:	DATE: 03-FEB-2003 10:37			



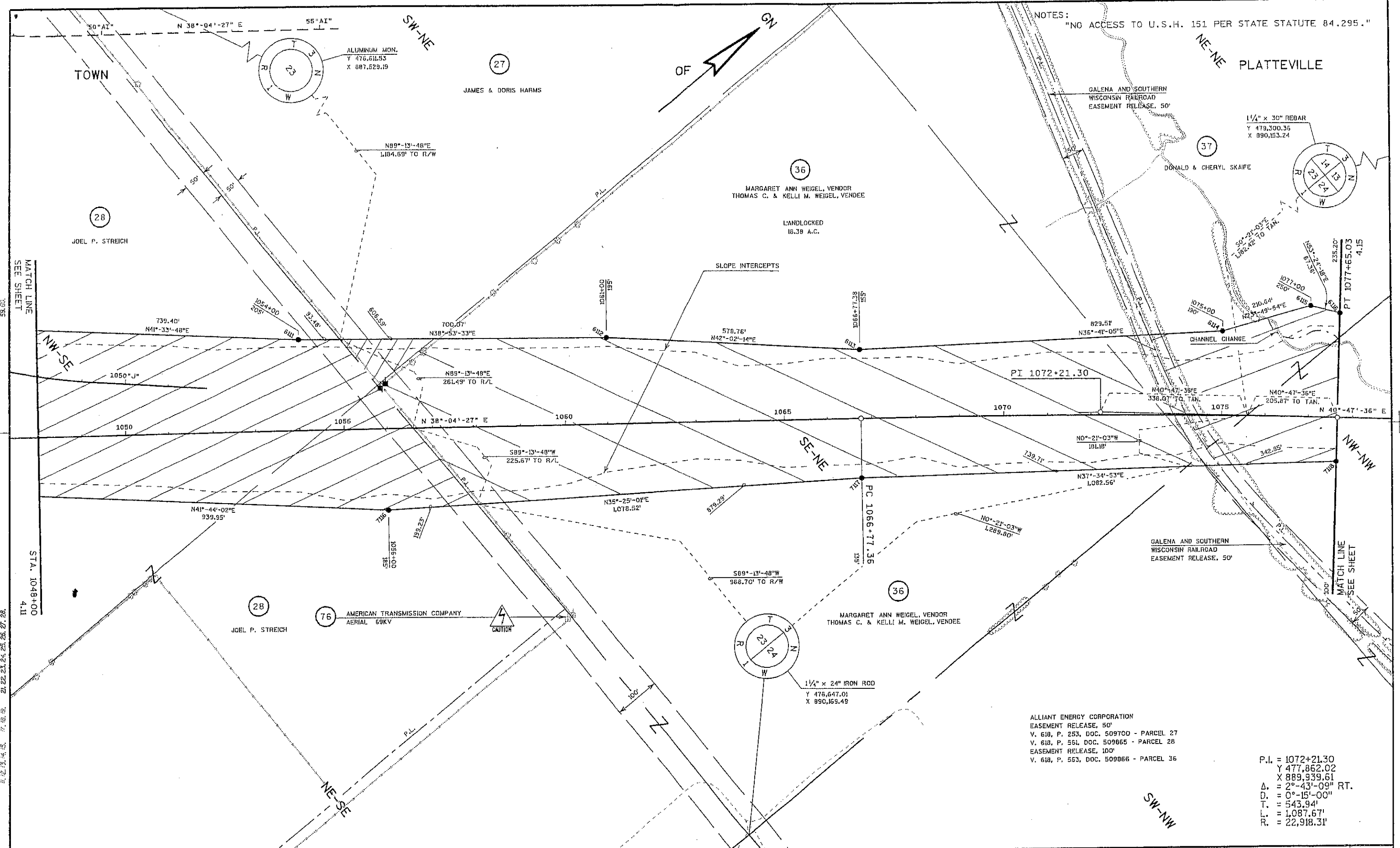
NOTES:
 EXISTING HIGHWAY R/W FOR S.T.H. 80/81 ESTABLISHED FROM PREVIOUS PROJECT S0517 (1) REFERENCE LINE, FOR COLLEGE FARM ROAD ESTABLISHED FROM CENTERLINE OF EXISTING PAVEMENT.



ALLIANT ENERGY CORPORATION
 EASEMENT RELEASE
 V. 302, P. 435, DOC. 235580 - PARCEL 33
 EASEMENT RELEASE, 10'
 V. 658, P. 7, DOC. 531414 - PARCEL 29

P.I. = 40+74.99"ST" Δ. = 0°-45'-00" RT.	P.I. = 32+50.00"ST" Δ. = 1°-07'-10" LT. D. = 0°-15'-00" T. = 223.91' L. = 447.81' R. = 22,918.31' P.C. = 30+26.09"ST" P.T. = 34+73.90"ST"	P.I. = 20+79.93"CE" Δ. = 28°-31'-47" RT. D. = 6°-45'-00" T. = 215.81' L. = 422.66' R. = 848.83' P.C. = 18+64.13"CE" P.T. = 22+86.79"CE"	P.I. = 27+87.31"CE" Δ. = 76°-58'-39" LT. D. = 21°-00'-00" T. = 216.94' L. = 366.56' R. = 272.84' P.C. = 25+70.37"CE" P.T. = 29+36.93"CE"	P.I. = 31+82.12"CE" Δ. = 48°-44'-43" RT. D. = 21°-00'-00" T. = 123.61' L. = 232.12' R. = 272.84' P.C. = 30+58.52"CE" P.T. = 32+90.64"CE"
--	--	--	---	---

REVISION DATE: 9-6-2002 2-3-2003	SCALE, FEET: 0 100 200	DATE: 11-14-2001	HIGHWAY: U.S.H. 151	R/W PROJECT NUMBER: 1209-02-23	SHEET NUMBER: 4.13	E
GRID FACTOR: N/A	COUNTY: GRANT	FEDERAL PROJECT NUMBER:				



NOTES:
 "NO ACCESS TO U.S.H. 151 PER STATE STATUTE 84.295."

NE-NE PLATTEVILLE

TOWN

JAMES & DORIS HARMS

MARGARET ANN WEIGEL, VENDOR
 THOMAS C. & KELLI M. WEIGEL, VENDEE

DONALD & CHERYL SKAIFE

GALENA AND SOUTHERN
 WISCONSIN RAILROAD
 EASEMENT RELEASE, 50'

1 1/4" x 30" REDAR
 Y 479,300.35
 X 890,153.24

PI 1072+21.30

GALENA AND SOUTHERN
 WISCONSIN RAILROAD
 EASEMENT RELEASE, 50'

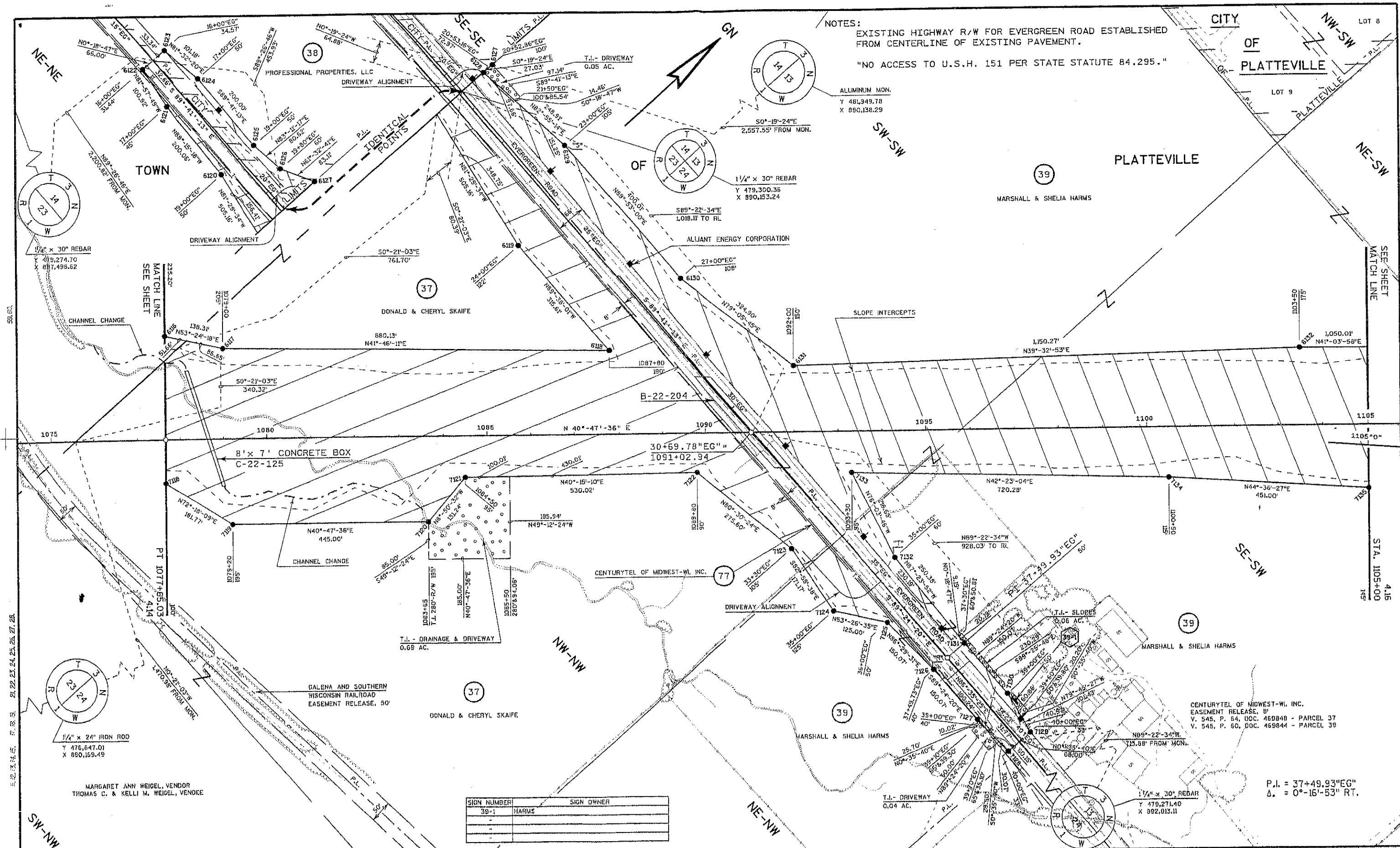
76 AMERICAN TRANSMISSION COMPANY
 AERIAL 69KV

MARGARET ANN WEIGEL, VENDOR
 THOMAS C. & KELLI M. WEIGEL, VENDEE

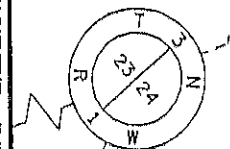
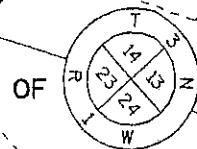
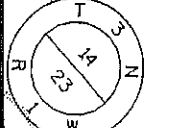
ALLIANT ENERGY CORPORATION
 EASEMENT RELEASE, 50'
 V. 618, P. 253, DOC. 509700 - PARCEL 27
 V. 618, P. 561, DOC. 509865 - PARCEL 28
 EASEMENT RELEASE, 100'
 V. 618, P. 563, DOC. 509866 - PARCEL 36

P.I. = 1072+21.30
 Y 477,862.02
 X 889,939.61
 Δ = 2°-43'-09" RT.
 D = 0°-15'-00"
 T = 543.94'
 L = 1,087.67'
 R = 22,918.31'

REVISION DATE: 9-6-2002 2-3-2003	SCALE, FEET: 0 100 200	DATE: 11-14-2001	HIGHWAY: U.S.H. 151	R/W PROJECT NUMBER: 1209-02-23	SHEET NUMBER: 4.14	E
		GRID FACTOR: N/A	COUNTY: GRANT	FEDERAL PROJECT NUMBER:		



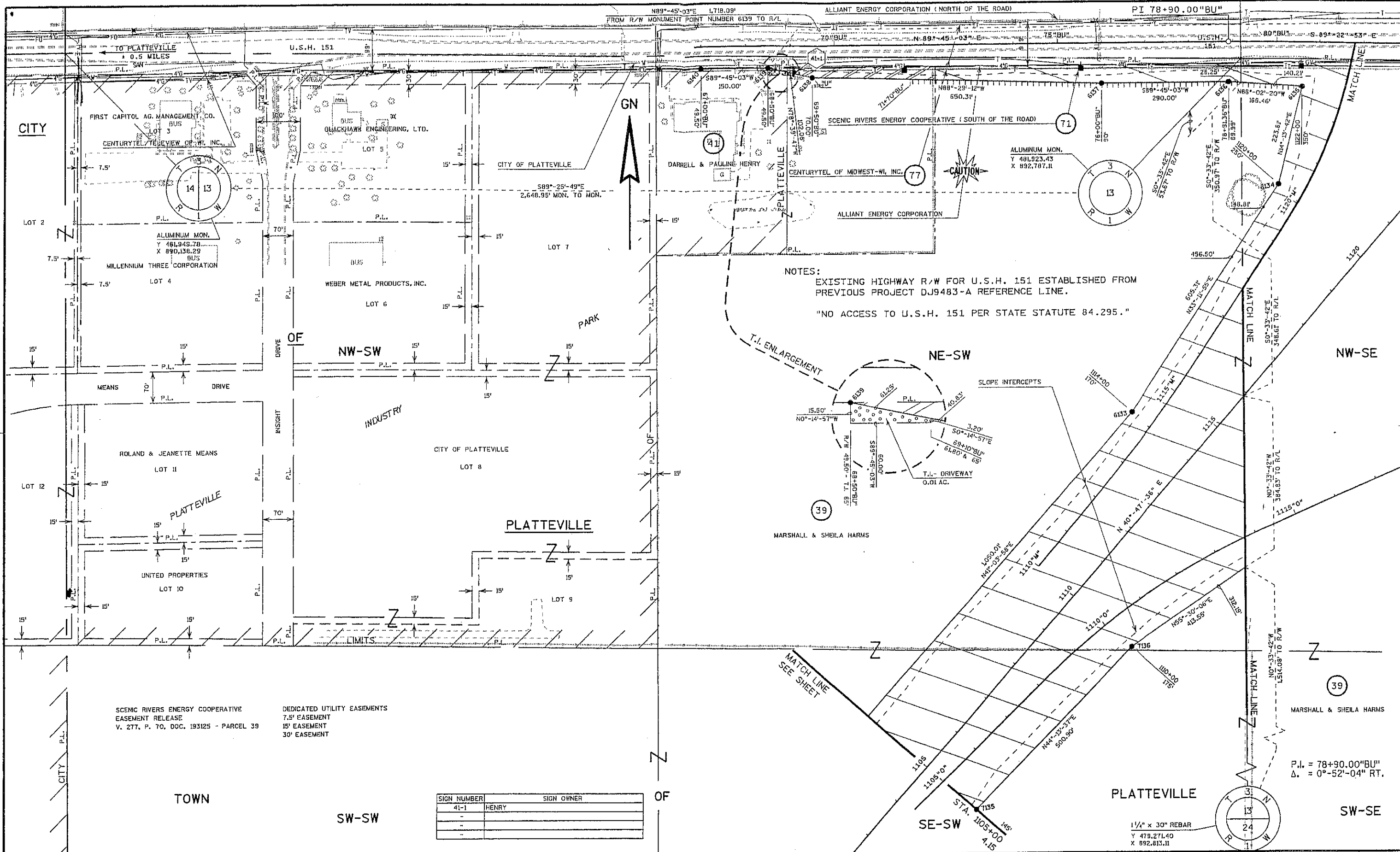
NOTES:
 EXISTING HIGHWAY R/W FOR EVERGREEN ROAD ESTABLISHED FROM CENTERLINE OF EXISTING PAVEMENT.
 "NO ACCESS TO U.S.H. 151 PER STATE STATUTE 84.295."



SIGN NUMBER	SIGN OWNER
39-1	HARMS

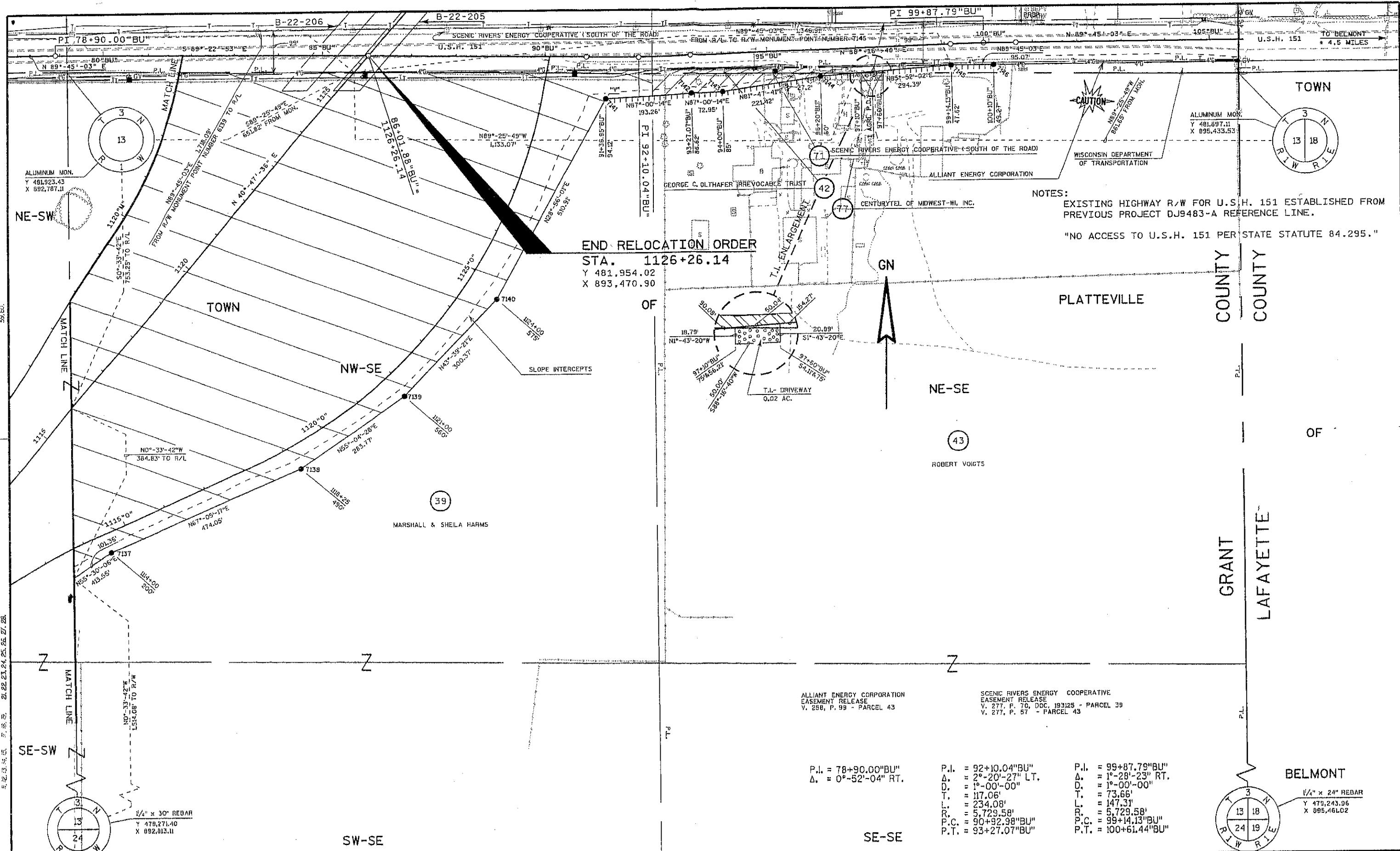
P.I. = 37+49.93" EG"
 Δ = 0°-16'-53" RT.

REVISION DATE: 9-6-2002 2-3-2003	SCALE, FEET: 0 100 200	DATE: 11-14-2001	HIGHWAY: U.S.H. 151	R/W PROJECT NUMBER: 1209-02-23	SHEET NUMBER: 4.15	E
		GRID FACTOR: N/A	COUNTY: GRANT	FEDERAL PROJECT NUMBER:		



SIGN NUMBER	SIGN OWNER
41-1	HENRY

REVISION DATE:	9-6-2002 N.C. 2-3-2003 N.C.	SCALE, FEET:	0 100 200	DATE:	11-14-2001	HIGHWAY:	U.S.H. 151	R/W PROJECT NUMBER:	1209-02-23	SHEET NUMBER:	4.16	E
GRID FACTOR:	N/A	COUNTY:	GRANT	FEDERAL PROJECT NUMBER:								



NOTES:
 EXISTING HIGHWAY R/W FOR U.S.H. 151 ESTABLISHED FROM PREVIOUS PROJECT DJ9483-A REFERENCE LINE.
 "NO ACCESS TO U.S.H. 151 PER STATE STATUTE 84.295."

END RELOCATION ORDER
 STA. 1126+26.14
 Y 481,954.02
 X 893,470.90

ALLIANT ENERGY CORPORATION
 EASEMENT RELEASE
 V. 258, P. 99 - PARCEL 43

SCENIC RIVERS ENERGY COOPERATIVE
 EASEMENT RELEASE
 V. 277, P. 70, DOC. 193125 - PARCEL 39
 V. 277, P. 57 - PARCEL 43

P.I. = 78+90.00"BU"	P.I. = 92+10.04"BU"	P.I. = 99+87.79"BU"
Δ = 0°-52'-04" RT.	Δ = 2°-20'-27" LT.	Δ = 1°-28'-23" RT.
	D. = 1°-00'-00"	D. = 1°-00'-00"
	T. = 117.06'	T. = 73.66'
	L. = 234.08'	L. = 147.31'
	R. = 5,729.58'	R. = 5,729.58'
	P.C. = 90+92.98"BU"	P.C. = 99+14.13"BU"
	P.T. = 93+27.07"BU"	P.T. = 100+61.44"BU"

1/4" x 30" REBAR
 Y 479,271.40
 X 892,813.11

BELMONT
 1/4" x 24" REBAR
 Y 479,243.96
 X 895,461.02

REVISION DATE: 9-6-2002 2-3-2003 N.C.	SCALE, FEET: 0 100 200	DATE: 11-14-2001	HIGHWAY: U.S.H. 151	R/W PROJECT NUMBER: 1209-02-23	SHEET NUMBER: 4.17	E
		GRID FACTOR: N/A	COUNTY: GRANT	FEDERAL PROJECT NUMBER:		

R/W MONUMENT POINT NUMBER AND COORDINATE TABLE

R/W MONUMENT POINT NUMBER AND COORDINATE TABLE			R/W MONUMENT POINT NUMBER AND COORDINATE TABLE			R/W MONUMENT POINT NUMBER AND COORDINATE TABLE			R/W MONUMENT POINT NUMBER AND COORDINATE TABLE			R/W MONUMENT POINT NUMBER AND COORDINATE TABLE			R/W MONUMENT POINT NUMBER AND COORDINATE TABLE		
POINT	Y	X	POINT	Y	X	POINT	Y	X	POINT	Y	X	POINT	Y	X	POINT	Y	X
6001	474,902.77	874,299.49	6100	475,974.20	886,218.55	7001	472,618.39	874,342.81	7100	473,776.12	888,728.33						
6002	474,467.80	874,305.01	6101	475,898.06	886,219.61	7002	473,222.80	874,540.64	7101	473,894.35	888,703.87						
6003	474,103.55	874,430.82	6102	475,871.41	886,219.98	7003	473,335.02	874,721.61	7102	473,901.33	888,769.93						
6004	473,998.07	874,470.32	6103	475,761.00	886,349.32	7004	473,634.09	875,211.28	7103	473,918.22	889,279.11						
6005	474,000.23	875,170.60	6104	475,559.00	886,585.96	7005	473,615.16	875,560.92	7104	473,952.93	889,478.66						
6006	473,960.88	875,619.74	6105	475,492.54	886,725.95	7006	473,530.98	876,120.50	7105	474,018.92	889,477.77						
6007	473,927.41	875,868.97	6106	475,364.11	886,861.97	7007	473,611.22	876,672.35	7106	474,024.57	889,377.68						
6008	473,959.69	876,131.43	6107	475,563.95	887,092.12	7008	473,606.70	877,393.81	7107	474,056.32	888,767.84						
6009	473,968.52	876,266.52	6108	475,727.61	887,510.68	7009	473,811.04	878,297.00	7108	474,007.48	888,637.22						
6010	473,964.18	876,956.21	6109	475,728.46	887,576.67	7010	473,804.90	878,660.29	7109	474,004.87	888,448.17						
6011	473,957.70	876,956.30	6110	476,001.45	888,164.52	7011	473,861.50	878,838.26	7110	474,211.31	888,211.65						
6012	473,957.71	877,092.92	6111	476,554.89	888,655.07	7012	473,736.11	879,092.15	7111	474,334.60	888,020.34						
6013	474,149.64	877,907.55	6112	477,099.57	889,094.62	7013	473,729.06	879,103.64	7112	474,464.47	887,868.19						
6014	474,330.20	878,564.13	6113	477,529.43	889,482.17	7014	473,687.07	879,075.63	7113	474,599.77	887,753.64						
6015	474,748.03	879,270.23	6114	478,194.64	889,977.73	7015	473,645.35	879,137.85	7114	474,743.41	887,650.87						
6016	474,771.42	879,344.06	6115	478,387.32	890,062.84	7016	473,689.80	879,157.61	7115	475,770.20	888,459.73						
6017	474,808.45	879,460.89	6116	478,427.48	890,116.92	7017	473,603.63	879,308.04	7116	476,471.63	889,085.42						
6018	475,039.20	879,498.86	6117	478,509.94	890,227.96	7018	473,551.61	879,462.98	7117	477,350.58	889,710.45						
6019	475,145.74	879,492.25	6118	479,166.36	890,514.25	7019	473,489.37	879,514.28	7118	478,208.49	890,370.69						
6020	475,242.16	879,486.27	6119	479,168.38	890,498.65	7020	473,240.48	879,565.52	7119	478,263.74	890,543.86						
6021	475,550.12	879,498.70	6120	479,243.11	889,999.05	7021	472,971.92	879,583.22	7120	478,600.64	890,834.59						
6022	475,741.91	879,507.89	6121	479,249.20	889,999.08	7022	472,610.08	879,580.72	7121	478,730.33	890,814.42						
6023	475,933.45	879,526.97	6122	479,263.31	889,699.15	7023	472,441.91	879,597.90	7122	479,134.84	891,156.90						
6024	475,994.98	879,533.09	6123	479,329.31	889,699.52	7024	472,443.26	879,702.89	7123	479,180.30	891,428.73						
6025	476,287.09	879,528.00	6124	479,344.20	889,799.60	7025	472,611.88	879,720.71	7124	479,159.37	891,598.62						
6026	476,440.86	879,525.31	6125	479,343.11	889,999.60	7026	472,976.36	879,718.15	7125	479,233.82	891,699.02						
6027	476,442.92	879,645.30	6126	479,352.67	890,079.65	7027	473,194.13	879,693.29	7126	479,243.00	891,648.81						
6028	476,289.60	879,672.86	6127	479,392.27	890,152.87	7028	473,463.57	879,689.85	7127	479,241.44	891,998.87						
6029	475,993.85	879,669.19	6128	479,365.24	890,152.72	7029	473,479.08	879,707.27	7128	479,247.41	892,098.94						
6030	475,932.27	879,668.88	6129	479,395.92	890,399.89	7030	473,570.80	879,809.91	7129	479,313.40	892,099.62						
6031	475,551.71	879,688.69	6130	479,396.73	890,799.90	7031	473,607.47	879,888.62	7130	479,331.44	891,999.81						
6032	475,243.87	879,691.26	6131	479,458.19	891,118.94	7032	473,754.13	880,102.05	7131	479,333.00	891,849.74						
6033	475,042.14	879,669.73	6132	480,345.16	891,851.34	7033	473,836.88	880,264.52	7132	479,344.36	891,599.63						
6034	474,860.95	879,672.89	6133	481,136.82	892,541.12	7034	473,857.42	880,463.28	7133	479,396.55	891,389.35						
6035	474,917.21	880,186.01	6134	481,643.33	892,872.56	7035	473,867.37	880,744.61	7134	479,928.57	891,874.89						
6036	474,960.02	881,224.30	6135	481,860.08	892,927.52	7036	473,887.50	880,794.61	7135	480,249.65	892,191.60						
6037	474,960.19	882,093.96	6136	481,871.71	892,759.46	7037	473,953.50	880,794.63	7136	480,608.59	892,540.98						
6038	474,959.94	882,343.23	6137	481,870.45	892,469.46	7038	473,977.37	880,744.63	7137	480,842.82	892,881.81						
6039	474,958.44	883,843.39	6138	481,887.63	891,819.38	7039	473,962.42	880,463.50	7138	481,027.37	893,318.46						
6040	474,917.33	884,242.80	6139	481,907.69	891,719.29	7040	473,956.04	880,095.02	7139	481,189.84	893,551.12						
6041	474,956.21	884,643.44	6140	481,907.04	891,569.29	7041	473,890.04	880,094.78	7140	481,407.16	893,758.48						
6042	474,923.30	884,832.96	6141	476,916.21	884,996.00	7042	473,858.50	880,033.26	7141	481,854.29	894,005.65						
6043	475,068.29	884,835.18				7043	473,736.89	879,803.32	7142	481,864.39	894,198.64						
6044	475,067.57	884,881.87				7044	473,744.44	879,716.52	7143	481,868.21	894,271.49						
6045	475,066.56	884,947.89				7045	473,875.14	879,703.90	7144	481,899.81	894,490.64						
6046	475,065.81	885,010.16				7046	473,957.52	879,688.66	7145	481,921.02	894,784.26						
6047	474,910.63	885,007.79				7047	474,043.57	879,587.15	7146	481,921.44	894,879.34						
6048	474,965.91	885,643.71				7048	474,077.63	879,785.38	7147	474,044.15	888,977.38						
6049	475,044.45	886,066.83				7049	474,261.77	880,233.32	7148	474,019.83	889,027.71						
6050	475,068.69	886,494.99				7050	474,393.05	880,455.77	7149	474,346.24	887,771.21						
6051	475,178.22	886,690.28				7051	474,573.80	880,868.00	7150	474,463.52	887,553.84						
6052	475,295.75	886,593.88				7052	474,656.28	881,154.56	7151	474,478.09	887,553.67						
6053	475,444.73	886,483.46				7053	474,722.56	881,743.56	7152	473,931.61	888,190.47						
6054	475,644.96	886,245.24				7054	474,685.22	882,089.75	7153	473,863.00	888,225.16						
6055	475,789.66	886,106.37				7055	474,682.12	882,338.98	7154								
6056	475,908.31	885,944.13				7056	474,663.47	883,838.87	7155								
6057	476,085.27	885,716.89				7057	474,668.18	884,839.06	7156	474,081.38	888,105.08						
6058	476,248.65	885,565.64				7058	474,543.20	884,837.15	7157	474,065.55	888,122.88						
6059	476,387.45	885,437.27				7059	474,542.39	884,889.62	7158	474,021.78	888,087.81						
6060	476,521.76	885,282.97				7060	474,541.38	884,955.64	7159	473,998.05	887,976.07						
6061	476,647.25	885,136.51				7061	474,540.60	885,007.13	7160	473,992.13	887,948.86						
6062	476,685.00	885,105.58				7062	474,685.58	885,009.35									
6063	476,705.61	885,088.68				7063	474,637.48	885,538.68									
6064	476,850.98	884,918.38				7064	474,484.52	886,058.27									
6065	476,927.05	884,983.30				7065	474,311.79	886,849.48									
6066	476,917.22	885,024.86				7066	474,380.36	887,212.37									
6067	476,776.50	885,186.66				7067	474,389.33	887,259.84									
6068	476,744.54	885,222.73				7068	474,407.56	887,291.34									
6069	476,618.02	885,362.71				7069	474,316.77	887,234.13									
6070	476,479.86	885,513.82				7070	474,345.31	887,314.35									
6071	476,371.87	885,667.71				7071	474,509.72	887,467.91									