



State of Wisconsin \ DEPARTMENT OF TRANSPORTATION



March 26, 1980

DIVISION OF HIGHWAYS AND TRANSPORTATION FACILITIES
P. O. Box 7916
Madison, WI 53707

Mr. Nelson Huske, Commissioner
Grant County Highway Department
P.O. Box 150
1011 N. Adams Street
Lancaster, Wisconsin 53813

Ms. Dorothy Eck
Grant County Clerk
Courthouse
Box 191
Lancaster, Wisconsin 53813

Dear Sir and Madame:

Project 1208-0-21 F 012(8)
Dubuque-Dickeyville Road
(City Island Bridge Approach)
U.S.H. 151
Grant County

The Department of Transportation deems it necessary to make certain revisions on a previously approved right of way plat and to acquire certain lands and interests in lands, according to such revisions, for the proper improvement or maintenance of the above-designated project and highway. The revised relocation order of the Department and the map showing the highway as laid out and established and the lands and interests to be acquired are transmitted herewith.

The enclosed relocation order provides that the necessary acquisitions of lands and interests not previously acquired shall be made by the Division of Highways and Transportation Facilities, pursuant to Section 84.09(1) or (2), Wisconsin Statutes.

Sincerely,

H. L. Fiedler
Administrator

HLF:lrd
Enc.
CC: DD# 1
R/E

APR 1 1980

RP

CONVENTIONAL SIGNS

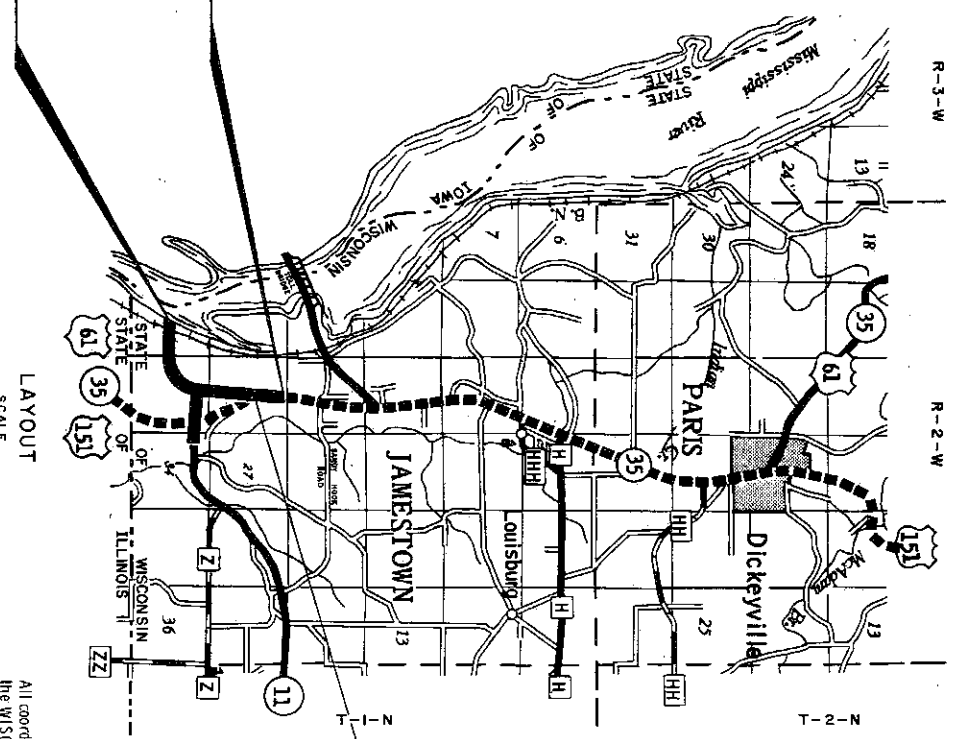
- STATE LINE
- COUNTY LINE
- TOWNSHIP AND RANGE LINES
- SECTION LINE
- QUARTER LINE
- SIXTEENTH LINE
- NEW CENTERLINE
- NEW R/W LINE
- OLD R/W LINE
- PROPERTY LINE
- CORPORATE LIMITS
- SLOPE INTERCEPTS
- LOT, TIE AND OTHER MINOR DASHED LINES
- UNDERGROUND FACILITY (POWER, TELEPHONE, TELEGRAPH, GAS, ETC.)
- NO ACCESS (ACQUISITION)
- LIMITED HIGHWAY EASEMENT
- HIGHWAY HIGHWAY SEPARATION
- HIGHWAY OVERPASS
- RAIL LINE OVERPASS
- ALL OTHER BRIDGES
- STREAM OR RIVER
- LAKE
- CATTLE PASS
- RELOCATED STREAM OR RIVER
- RAVELED WAY (Shown only in area of Frontage Roads, Interchanges or Dual Lanes)
- NO ACCESS
- CEMETERY
- FOUNDATION
- GAS PUMP ISLAND BUILDING
- IRON PIN
- POWER POLE
- TELEPHONE POLE
- RAIL LINE
- TRANSMISSION TOWER
- UNDERGROUND CABLE MARKER
- WELL
- STONE MONUMENT
- SEPTIC TANK
- WINDMILL
- R/W POINT
- R/W MONUMENT

STANDARD ABBREVIATIONS

- ACRES
- ALUMINUM
- BARN
- DOCUMENT
- HOUSE
- HOUSE TRAILER
- LANDLOCKED
- LEFT
- LIMITED HIGHWAY EASEMENT
- MONUMENT
- PAGE
- PERMANENT
- PROPERTY LINE
- REMAINING
- RIGHT
- SEVERED
- SHED
- VOLUME
- AC.
- ALUM.
- B.
- DOC.
- H.
- H.T.
- H.L.
- L.L.
- L.T.
- L.H.E.
- MON.
- P.
- PERM.
- P.L.
- REML.
- RT.
- SEV.
- S.
- VOL.

END RELOCATION ORDER PROJECT 1208-0-21
 FEDERAL PROJECT F 0121(8)
 STA. 129+36.10 X
 Y 196,175.82
 X 1,835,444.16
 191.95 S. 8 590.26 E. of the N. 1/4 Cor.,
 Sec. 28, T.1N., R.2W.

BEGIN RELOCATION ORDER PROJECT 1208-0-21
 FEDERAL PROJECT F 0121(8)
 STA. 12+80.88
 Y 188,519.72
 X 1,829,656.68
 45.64 N. 82.409 S.21 W. of the E. 1/4 Cor.,
 Sec. 32, T.1N., R.2W.



PARCEL NO.	SHEET NO.	OWNER
1	4.2	United States of America
2	4.2	D & T Investments, Inc.
3	4.2, 4.3	Ruth Wagner
4	4.2, 4.3	William Libold, et al

R/W PROJECT NUMBER	1208-0-21	
FEDERAL PROJECT NUMBER	F 0121(8)	
PLAN OR ROAD OR WAY REQUIRED FOR	1208-0-06	
DUBUQUE - DICKEYVILLE ROAD		
(CITY ISLAND BRIDGE APPROACH)		
U.S.H. 151	GRANT COUNTY	
CONTRIBUTION PROJECT NUMBER		
PARCEL NO.	SHEET NO.	OWNER

5	4.2	Burlington Northern, Inc.
6	4.3, 4.4	Edwin Dignan, Vendor
7	4.3, 4.4	Egidius H. Portzen, Vendee
8	4.5	Lavern Dignan, et al
9		
10		
11	4.5	Oliver E. Kiehl
12	4.5	Albert J. Dressens
13	4.5	Edward G. Harwick
14		
15	4.4, 4.5	Wisconsin Power & Light Company
16	4.4, 4.6	Joseph Cogan, et al
17	4.6, 4.7	Henry G. Freese, Vendor
18	4.7	Joseph Freese, Vendee
19	4.7	Michael J. Gile
20	4.6	Telegraph Herold, Inc.
21	4.6, 4.7	Cyril J. Dressler
22	4.7	Wisconsin Power & Light Company
20-1	4.6	Tower Motel & Restaurant
23	4.7	Henry G. Freese, Vendor
		Joseph Freese, Vendee

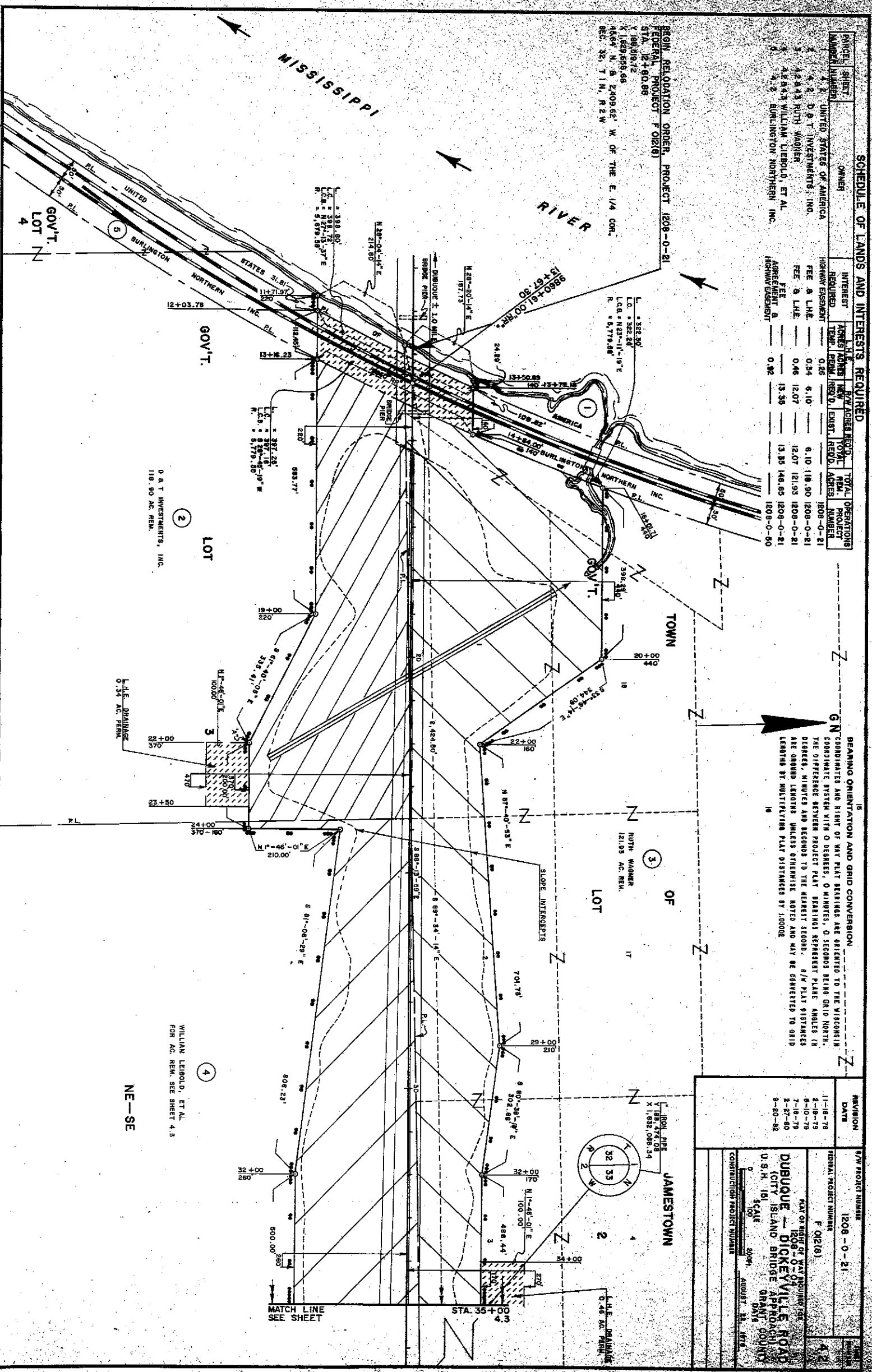
All coordinates shown on this plate are referenced to the WISCONSIN COORDINATE SYSTEM SOUTH ZONE.

TOTAL NET LENGTH OF CENTERLINE - 2.227 MILES

SCHEDULE OF LANDS AND INTERESTS REQUIRED

PARCEL NUMBER	SHEET NUMBER	OWNER	INTEREST REQUIRED	ACRES	NEW ACRES	EXIST. ACRES	TOTAL OPERATIONS ACRES	PROJECT NUMBER
1	1	UNITED STATES OF AMERICA	HIGHWAY EASEMENT	0.26	0.26	0.00	0.26	1208-0-21
2	2	D. & T. INVESTMENTS, INC.	FEE & L&E	0.34	6.10	6.10	118.90	1208-0-21
3	3	RUTH WAGNER	FEE & L&E	0.46	12.07	12.07	121.93	1208-0-21
4	4	WILLIAM LEIBOLD, ET AL.	FEE & L&E	13.39	13.39	13.39	146.65	1208-0-21
5	5	BURLINGTON NORTHERN INC.	AGREEMENT & HIGHWAY EASEMENT	0.82	0.82	0.00	0.82	1208-0-21

BEIGN RELATION ORDER, PROJECT 1208-0-21
 FEDERAL PROJECT F 012(1)
 STA. 12+80.88
 X 189,087.2
 X 182,959.68
 44,654' N. @ 240.962' W. OF THE E. 1/4 COR.
 SEC. 32, T.1N., R.2W.



BEARING ORIENTATION AND GRID CONVERSION
 COORDINATE SYSTEM WITH 0 DEGREES, 0 MINUTES, 0 SECONDS BEING GRID NORTH.
 THE DIFFERENCE BETWEEN PROJECT PLAT BEARINGS REPRESENT PLANE ANGLES IN DEGREES, MINUTES AND SECONDS TO THE NEAREST SECOND. R/W PLAT DISTANCES ARE GROUND LENGTHS UNLESS OTHERWISE NOTED AND MAY BE CONVERTED TO GRID LENGTHS BY MULTIPLYING PLAT DISTANCES BY 1.00002.

REVISION	DATE
1	1-18-78
2	3-19-79
3	5-10-79
4	7-16-79
5	2-27-80
6	9-20-82

DUBUQUE - DICKETVILLE ROAD
 (CITY ISLAND BRIDGE APPROACH)
 U.S.H. 161
 SCALE 2000'
 AUGUST 12, 1976

CONSTRUCTION PROJECT NUMBER
 1208-0-21

STATE PROJECT NUMBER
 1208-0-21

FEDERAL PROJECT NUMBER
 F 012(1)

PLAT OF RIGHT OF WAY RESERVE FOR
 1208-0-21

WILLIAM LEIBOLD, ET AL.
 FOR AC. REM. SEE SHEET 4.3

D. & T. INVESTMENTS, INC.
 118.90 AC. REM.

GOV'T.

GOV'T.

GOV'T.

GOV'T.

GOV'T.

GOV'T.

GOV'T.

GOV'T.

GOV'T.

GOV'T.

GOV'T.

GOV'T.

GOV'T.

GOV'T.

GOV'T.

GOV'T.

GOV'T.

GOV'T.

GOV'T.

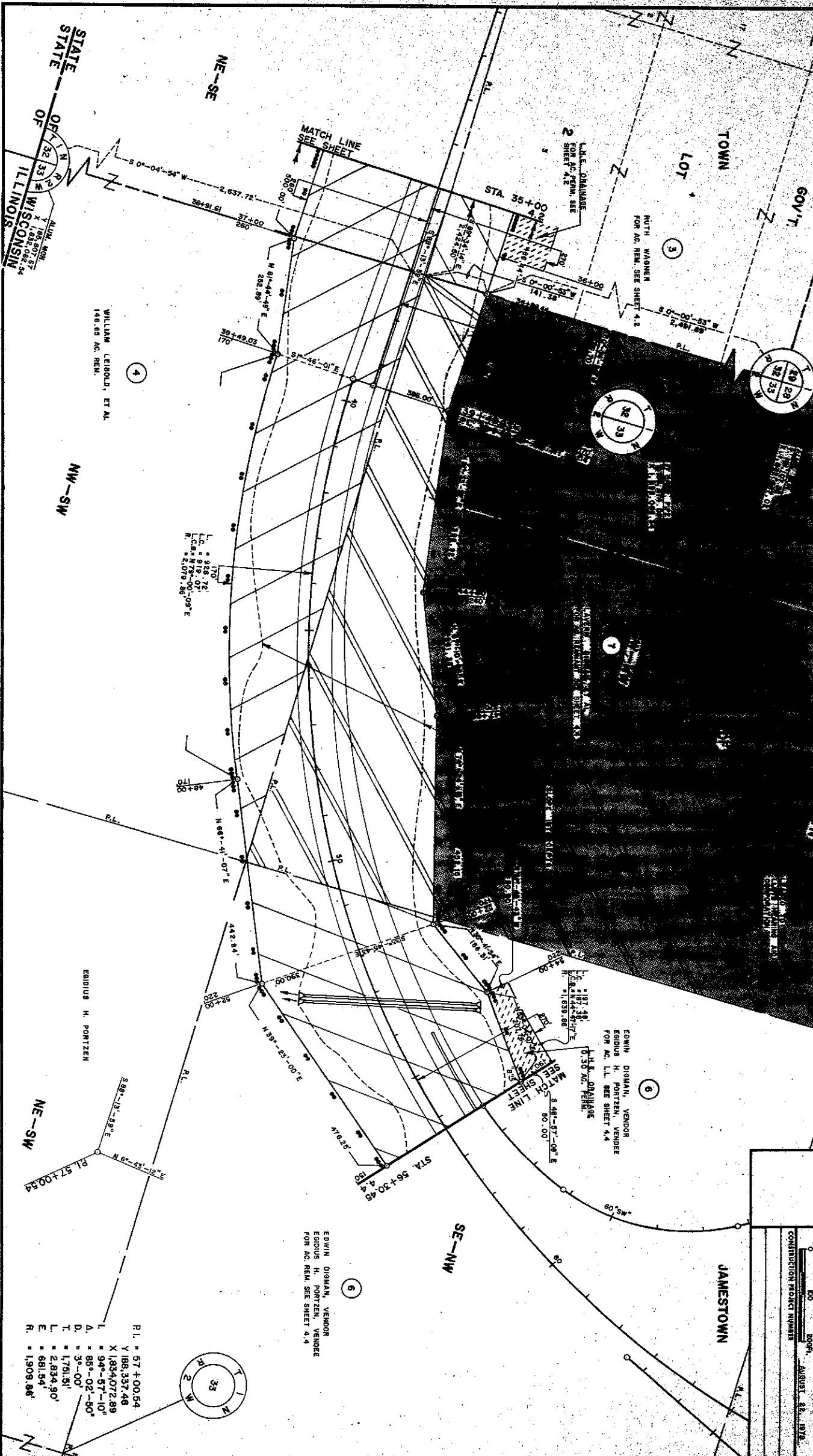
GOV'T.

SCHEDULE OF LANDS AND INTERESTS REQUIRED

PARCEL SHEET NUMBER	OWNER	INTEREST REQUIRED	H. E. L. E. PERM. ACRES		NEW ACRES PERM. ACRES		TOTAL OPERATIONS PERM. ACRES		BEARING ORIENTATION AND GRID CONVERSION COORDINATE SYSTEM WITH 0 DEGREES, 0 MINUTES, 0 SECONDS BEING GRID NORTH. THE DIFFERENCE BETWEEN PROJECT PLAT BEARINGS REPRESENT PLATE ANGLES IN DEGREES, MINUTES AND SECONDS TO THE NEAREST SECOND. R/W PLAT DISTANCES ARE GROUND LENGTHS UNLESS OTHERWISE NOTED AND MAY BE CONVERTED TO GRID LENGTHS BY MULTIPLYING PLAT DISTANCES BY 1.0008.
			REQ'D	EXHIB. REQ'D	REQ'D	EXHIB. REQ'D	REQ'D	EXHIB. REQ'D	
3	42843 RUTH WAGNER	FEE & L.H.E.	0.48	12.07	12.07	12.150	1208-0-21	0-21	
4	42843 WILLIAM LIEBOLD, ET AL.	FEE	13.35	13.35	13.35	148.66	1208-0-21	0-21	
6	43844 EDWIN DIGHAN, VENDOR	FEE & L.H.E.	0.30	13.81	13.81	68.19	1208-0-21	0-21	
7	43844 EDIUS H. PORTZEN, VENDOR	FEE	40.97	40.97	40.97	22.83	1208-0-21	0-21	
8	43844 LAVERN DIGHAN, ET AL.	FEE	40.97	40.97	40.97	22.83	1208-0-21	0-21	

REVISION	DATE	R/W PROJECT NUMBER	SCALE
1-16-78		1208-0-21	1"=100'
2-19-78			1"=100'
5-10-78			1"=100'
7-18-79			1"=100'
8-27-80			1"=100'
9-20-82			1"=100'

DUBOUE - DICKEYVILLE ROAD
 CITY ISLAND BRIDGE
 APRICORN
 GRAND COUNTY
 U.S.H. 191
 SCALE 1"=100'
 AUGUST 22, 1978
 CONSTRUCTION PROJECT NUMBER



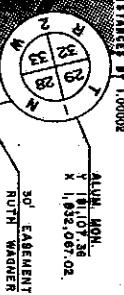
WILLIAM LIEBOLD, ET AL.
 148.66 AC. REM.

EDWIN DIGHAN, VENDOR
 EDIUS H. PORTZEN, VENDOR
 FOR AC. L.L. SEE SHEET 4.4

EDWIN DIGHAN, VENDOR
 EDIUS H. PORTZEN, VENDOR
 FOR AC. REM. SEE SHEET 4.4

- R1. = 57+00.54
- Y 188,337.46
- X 1834,072.89
- L. = 94°-57'-10"
- D. = 86°-02'-50"
- T. = 1,781.51'
- L. = 2,834.90'
- E. = 681.54'
- R. = 1,909.86'

BEARING ORIENTATION AND GRID CONVERSION
 COORDINATES AND RIGHT OF WAY BEARINGS ARE ORIENTED TO THE WISCONSIN
 COORDINATE SYSTEM WITH 0 DEGREES, 0 MINUTES, 0 SECONDS BEING GRID NORTH.
 THE DIFFERENCE BETWEEN PROJECT PLAT BEARINGS NEPHEWET PLANE ANGLES IN
 DEGREES, MINUTES AND SECONDS TO THE NEAREST SECOND, R/W PLAT DISTANCES
 ARE BEARING LENGTHS UNLESS OTHERWISE NOTED AND MAY BE CONVERTED TO GRID
 LENGTHS BY MULTIPLYING PLAT DISTANCES BY 1.00002



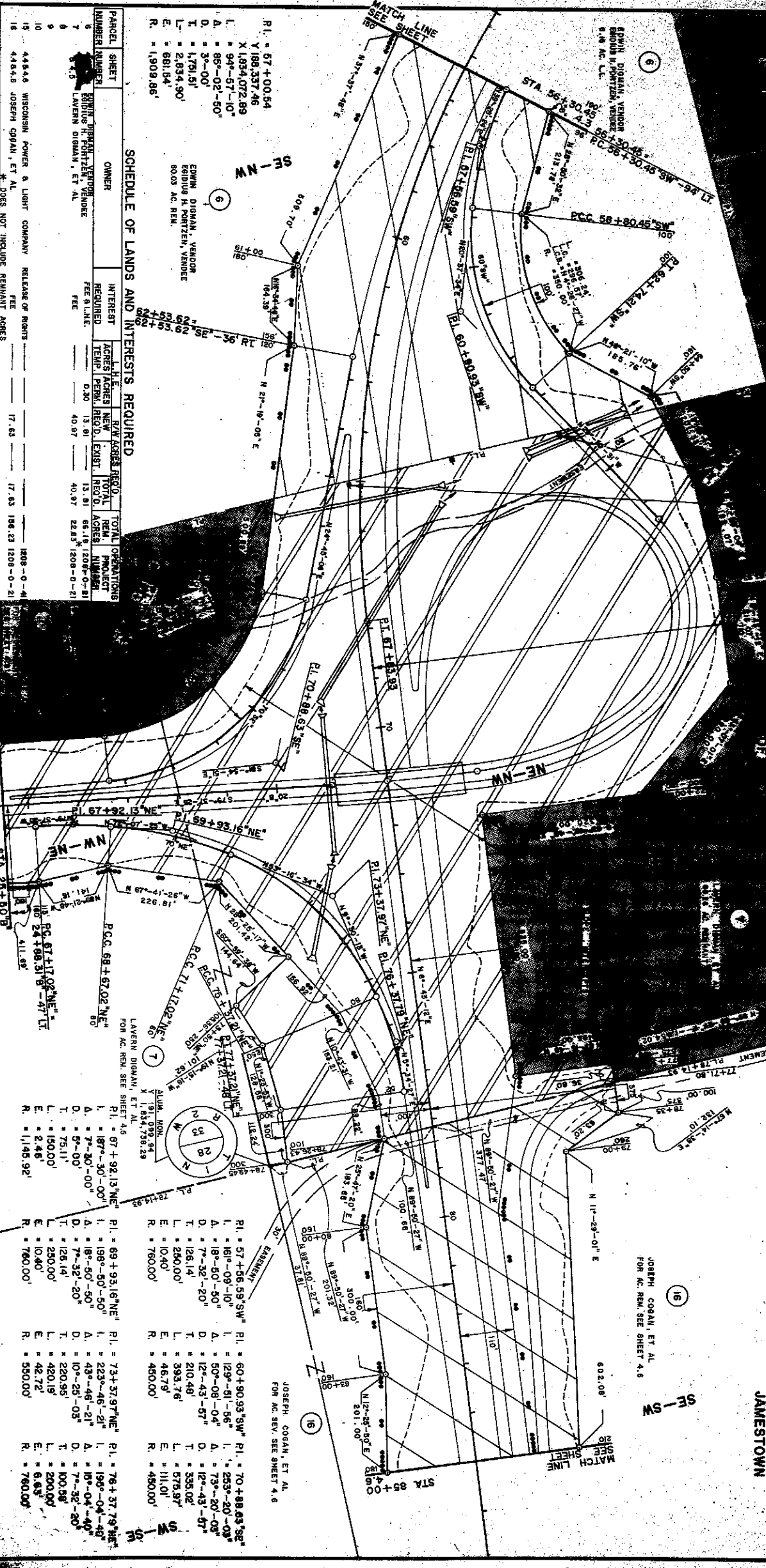
ALUM. MON.
 N 11° 07' 36" E
 X 1,932,007.02
 30' EASEMENT
 RUTH WAGNER

REVISION	DATE	RAW PROJECT NUMBER	SHEET NUMBER
1-16-78		1208-0-21	4.4
2-19-78			
5-10-78			
7-16-78			
8-27-80			
9-20-82			

RAW PROJECT NUMBER	1208-0-21
FEDERAL PROJECT NUMBER	F 012(B)
RAW OF RIGHT OF WAY ACQUIRED FOR	1208-0-04
DUBUQUE - ISLAND BRIDGE APPROACH	
(CITY, ISLAND BRIDGE APPROACH)	
U.S.H. 151	
SCALE	
0	100
200'	AUGUST 28, 1978
CONSTRUCTION PROJECT NUMBER	

JAMESTOWN

JOSEPH COGAN ET AL
 FOR AC. REM. SEE SHEET 4.6



SCHEDULE OF LANDS AND INTERESTS REQUIRED

PARCEL SHEET NUMBER	OWNER	INTEREST REQUIRED	ACRES		TOTAL OPERATIONS	
			NEW	EXIST.	REQ'D.	PROJCT.
1	EDWIN DIGNAN, VENDOR		0.30	13.91	13.91	66.18
2	EDMUND H. POITZEN, VENDOR					1208-0-81
3	EDMUND H. POITZEN, VENDOR					1208-0-81
4	EDMUND H. POITZEN, VENDOR					1208-0-81
5	EDMUND H. POITZEN, VENDOR					1208-0-81
6	EDMUND H. POITZEN, VENDOR					1208-0-81
7	EDMUND H. POITZEN, VENDOR					1208-0-81
8	EDMUND H. POITZEN, VENDOR					1208-0-81
9	EDMUND H. POITZEN, VENDOR					1208-0-81
10	EDMUND H. POITZEN, VENDOR					1208-0-81
11	EDMUND H. POITZEN, VENDOR					1208-0-81
12	EDMUND H. POITZEN, VENDOR					1208-0-81
13	EDMUND H. POITZEN, VENDOR					1208-0-81
14	EDMUND H. POITZEN, VENDOR					1208-0-81
15	EDMUND H. POITZEN, VENDOR					1208-0-81
16	EDMUND H. POITZEN, VENDOR					1208-0-81

MATCH LINE SEE SHEET

MATCH LINE SEE SHEET

Del. No. 2393 - 57

SCHEDULE OF LANDS AND INTERESTS REQUIRED

PARCEL NUMBER	SHEET	OWNER	INTEREST	ACRES/ACRES NEW	R/W ACRES REQD.	TOTAL OPERATIONS PROJECT
NUMBER	NUMBER		TEMP. PERM.	REQ'D. EXIST.	REQ'D.	ACRES NUMBER
15						
46947		HENRY G. FRESSE, VENDOR			10.30	2.20 12.50 146.00 1208-0-21
47		JOSEPH FRESSE, VENDOR			0.37	0.37 1208-0-21
47		MICHAEL J. GILLE			0.37	0.37 1208-0-21
21		CYRIL J. PROESSLER			8.36	2.63 10.99 56.51 1208-0-21
22		WISCONSIN POWER & LIGHT COMPANY				1208-0-41
47		HENRY G. FRESSE, VENDOR			1.26	0.38 1.54 144.36 1208-0-21
23		JOSEPH FRESSE, VENDOR				

BEARING ORIENTATION AND GRID CONVERSION
 COORDINATES AND RIGHT OF WAY PLAT BEARINGS ARE ORIENTED TO THE WISCONSIN COORDINATE SYSTEM WITH 0 DEGREES, 0 MINUTES, 0 SECONDS BEING GRID NORTH. THE DIFFERENCE BETWEEN PROJECT PLAT BEARINGS REPRESENT PLATE ANGLES IN DEGREES, MINUTES AND SECONDS TO THE NEAREST SECOND. R/W PLAT DISTANCES ARE GROUND LENGTHS UNLESS OTHERWISE NOTED AND MAY BE CONVERTED TO GRID LENGTHS BY MULTIPLYING PLAT DISTANCES BY 1.0002.

REVISION	DATE	R/W PROJECT NUMBER	SHEET NUMBER
1-16-78		1208-0-21	4.7
2-19-79			
6-10-79			
7-16-79			
8-27-80			
9-20-82			

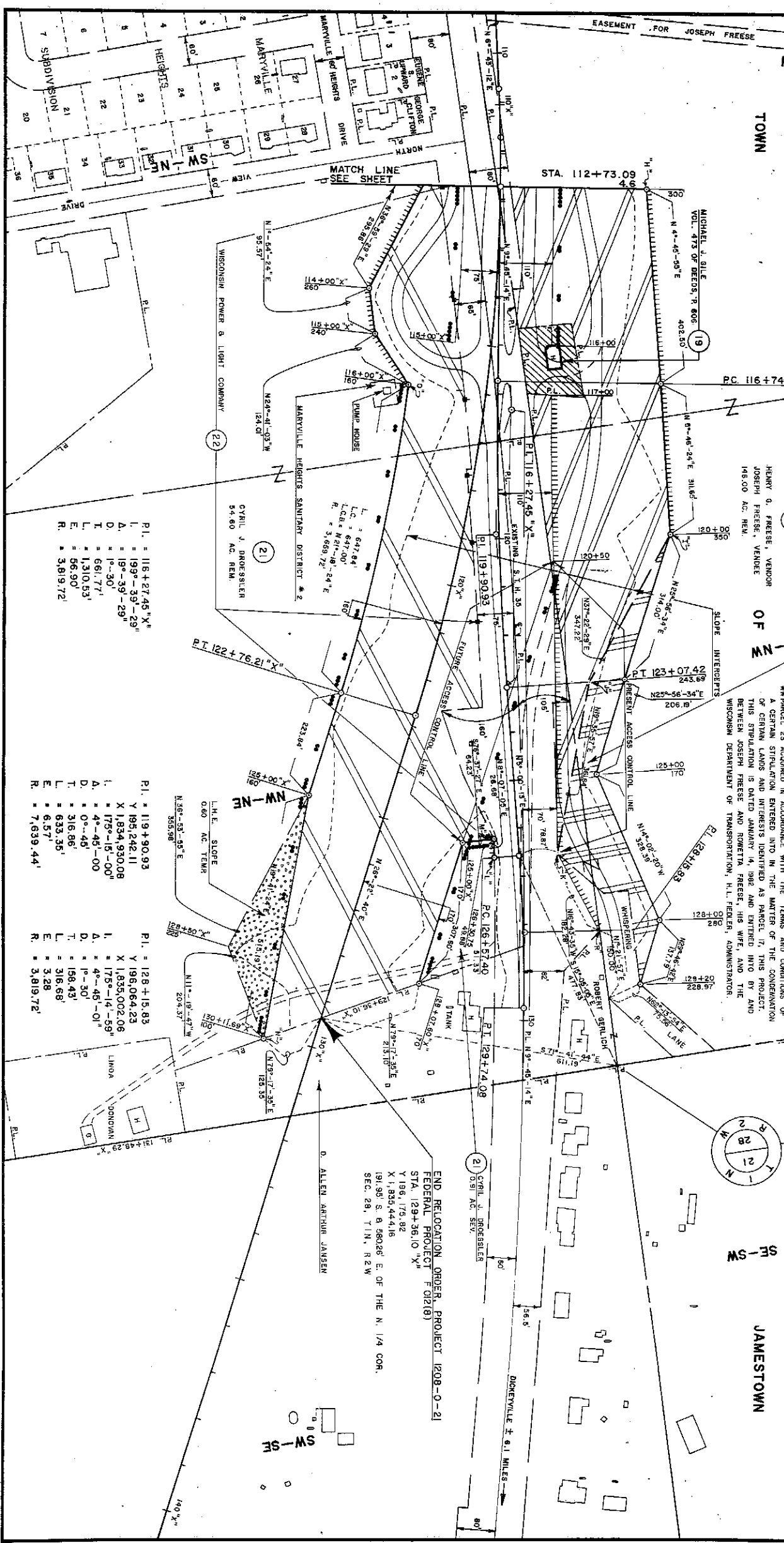
FEDERAL PROJECT NUMBER: 1208-0-21
 F 01218)
 PLAT OF RIGHT OF WAY REQUIRED FOR
DUBUQUE - DICKEYVILLE ROAD
 (CITY ISLAND BRIDGE APPROACH)
 U.S.H. 151
 SCALE
 200 FT. AUGUST 22, 1978
 GRANIT COUNTY

TOWN OF JAMESTOWN

HENRY G. FRESSE, VENDOR
 JOSEPH FRESSE, VENDOR
 146.00 AC. REM.

JOSEPH FRESSE, VENDOR
 41.38 AC. REM.

PARCEL 23 ACCORDING TO THE TERMS AND CONDITIONS OF A CERTAIN STIPULATION ENTERED INTO IN THE MATTER OF THE CONDEMNATION OF CERTAIN LANDS AND INTERESTS IDENTIFIED AS PARCEL 17, THIS PROJECT. THIS STIPULATION IS DATED JANUARY 14, 1982 AND ENTERED INTO BY AND BETWEEN JOSEPH FRESSE AND ROSETTA FRESSE, HIS WIFE, AND THE WISCONSIN DEPARTMENT OF TRANSPORTATION, H.L. FEJLER, ADMINISTRATOR.



P.L. = 116+27.45 "X"
 L. = 99'-39'-29"
 D. = 19'-39'-29"
 A. = 175'-15'-00"
 T. = 661.77'
 L. = 1,310.53'
 E. = 56.90'
 R. = 3,819.72'

P.L. = 119+90.93
 Y 195,242.11
 X 1,834,930.08
 L. = 175'-15'-00"
 D. = 0'-45'
 T. = 316.86'
 L. = 633.35'
 E. = 6.57'
 R. = 7,639.44'

P.L. = 128+15.83
 Y 196,064.23
 X 1,835,002.06
 L. = 175'-14'-59"
 D. = 0'-30'
 T. = 158.43'
 L. = 316.68'
 E. = 3.28'
 R. = 3,819.72'

END RELOCATION ORDER, PROJECT 1208-0-21
 FEDERAL PROJECT F 01218)
 STA. 129+36.10 "X"
 Y 196,179.82
 X 1,835,444.16
 191.98' S. 8.58026' E. OF THE N. 1/4 COR.
 SEC. 29, T.1N., R.2W.