

RELOCATION ORDER

R-O-572 4-79

State of Wisconsin / Department of Transportation
DIVISION OF HIGHWAYS AND TRANSPORTATION FACILITIES

Project 1208-0-21 F 012(8)	Name of Road Dubuque - Dickeyville Road (City Island Bridge Approach)	Highway U.S.H. 151	County Grant
Right of Way Plat Date July 16, 1979	Plat Sheet Numbers 4.0 through 4.7	Date of Previous Order May 30, 1979	
Description of Termini of Project			

From a point 45.64 feet north and 2409.62 feet west of the east one-quarter corner of Section 32, Township 1 North, Range 2 West, thence northeasterly to a point 191.95 feet south and 580.26 feet east of the north one-quarter corner of Section 28, Township 1 North, Range 2 West.

To properly establish, lay out, widen, enlarge, extend, construct, reconstruct, improve, or maintain a portion of the highway designated above, it is necessary to relocate or change and acquire certain lands or interests in lands as shown on the right of way plat for the above project.

To effect this change, pursuant to authority granted under Sections 84.02(3) and 84.09, Wisconsin Statutes, the Department of Transportation hereby orders that:

1. The said highway is hereby laid out and established to the lines and widths as shown on the plat.
2. The required lands or interests in lands as shown on the plat shall be acquired by **the Division of Highways and Transportation Facilities, in the name of the State of Wisconsin, pursuant to the provisions of Section 84.09(1) or (2), Wisconsin Statutes.**
3. This order supersedes and amends any previous order issued by the Department.

July 31, 1979

Date


Administrator

CONVENTIONAL SIGNS

- STATE LINE
- COUNTY LINE
- TOWNSHIP AND RANGE LINES
- SECTION LINE
- QUARTER LINE
- SIXTEENTH LINE
- NEW CENTERLINE
- NEW R/W LINE
- OLD R/W LINE
- PROPERTY LINE
- CORPORATE LIMITS
- SLOPE INTERCEPTS
- LOT, TIE AND OTHER MINOR DASHED LINES
- UNDERGROUND FACILITY (POWER, TELEPHONE, TELEGRAPH, GAS, ETC.)
- NO ACCESS (ACQUISITION)
- LIMITED HIGHWAY EASEMENT
- (Shading omitted on Aerial Halftones)

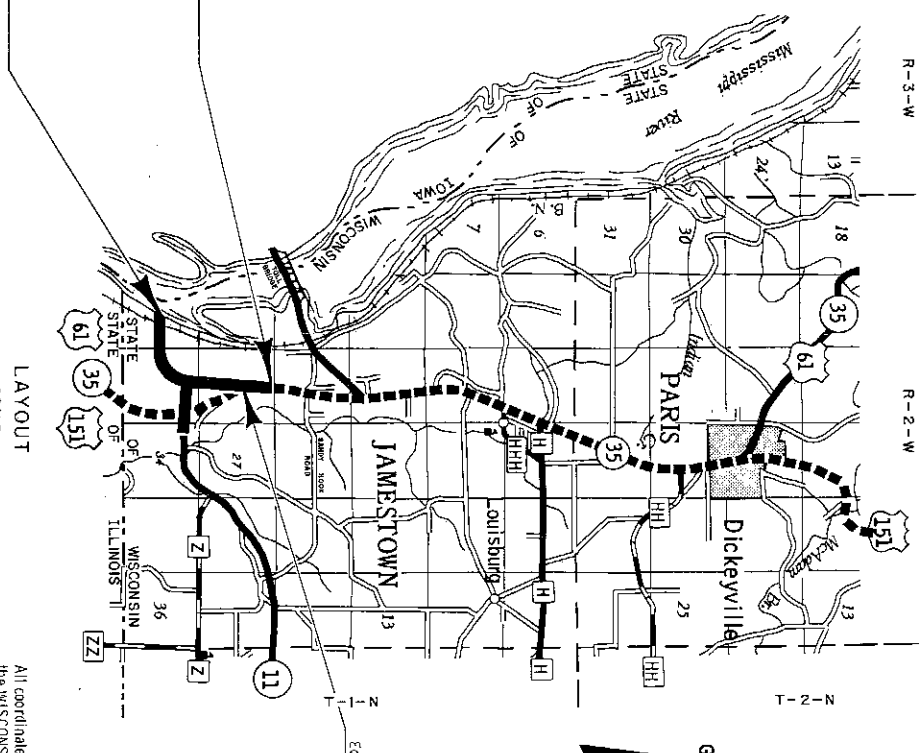
- STANDARD ABBREVIATIONS**
- ACRES
 - ALUMINUM BARN
 - DOCUMENT
 - HOUSE
 - HOUSE TRAILER
 - LANDLOCKED
 - LET
 - LIMITED HIGHWAY EASEMENT
 - MONUMENT
 - PAGE
 - PERMANENT PROPERTY LINE
 - REMAINING
 - RIGHT
 - SLIVERED
 - SHED
 - VOLUME

- HIGHWAY HIGHWAY SEPARATION
- HIGHWAY OVERPASS
- RAIL LINE OVERPASS
- ALL OTHER BRIDGES
- STREAM OR RIVER
- LAKE
- CATTLE PASS
- RELOCATED STREAM OR RIVER
- TRAVELED WAY
- Shown only in area of Frontage Roads, Interchanges or Dual Lanes
- NO ACCESS
- CEMETERY
- FOUNDATION
- GAS PUMP ISLAND
- BUILDING
- IRON PIN
- POWER POLE
- TELEPHONE POLE
- RAIL LINE
- TRANSMISSION TOWER
- AND LINE
- CABLE MARKER
- WELL
- STONE MONUMENT
- SEPTIC TANK
- WINDMILL
- R/W POINT
- R/W MONUMENT
- Fig. 11
- Gas Pump
- Type
- I.P.

PARCEL NO.	SHEET NO.	OWNER
1	4.2	United States of America
2	4.2	O & T Investments, Inc.
3	4.2, 4.3	Ruth Wagner
4	4.2, 4.3	William Liebold, et al

R/W PROJECT NUMBER 1208 - 0 - 21	SHEET NUMBER 4.0	TOTAL SHEETS 8
FEDERAL PROJECT NUMBER F 012(8)		
PLAT OF RIGHT OF WAY REQUIRED FOR DUBUQUE - DICKEYVILLE ROAD (CITY ISLAND BRIDGE APPROACH)		
U.S.H. 151 GRANT COUNTY		
CONTRIBUTION PROJECT NUMBER		

PARCEL NO.	SHEET NO.	OWNER
5	4.2	Burlington Northern, Inc.
6	4.3	Edwin Dignan, Vendor
6	4.3, 4.4	Egidius H. Fortzen, Vendor
7	4.4, 4.5	Lavern Dignan
8	4.4, 4.5	Lloyd Hearing Aid Corporation
9	4.4	Ruth Wagner
10		
11	4.5	Oliver E. Kiefler
12	4.5	Albert J. Dreesens
13	4.5	Edward G. Harwick
14		
15	4.4	Wisconsin Power & Light Company
15	4.4	
16	4.4, 4.5	Joseph Cogan
17	4.5	Henry G. Freese
18	4.6	Joseph Freese
19	4.7	Michael J. Gile
20	4.6	Telegraph Herald, Inc.
20	4.5	
21	4.4, 4.5	Cyril J. Dressler
20-1	4.6	Tower Motel & Restaurant



PC: 110 + 10.83 =
P.C. 109 + 65.68 X

Condition:

Scale: 1" = 200'

Scale: 1" = 200'

Scale: 1" = 200'

REVISION	DATE	STATE OF WISCONSIN DEPARTMENT OF TRANSPORTATION
11-16-78		
2-19-79		
5-10-78		
7-18-79		

APPROVED: *[Signature]*
 Director, Bureau of Road Eriks

APPROVED: *[Signature]*
 Director, Bureau of Road Eriks

U.S. DEPARTMENT OF TRANSPORTATION
 FEDERAL HIGHWAY ADMINISTRATION
 REGION 2
 WISCONSIN DIVISION

BEGIN RELOCATION ORDER PROJECT 1208-0-21
 FEDERAL PROJECT F 012(8)
 STA. 129 + 56.10 X
 Y 196, 175.82
 X 1, 835, 444.16
 191, 95 S. 8, 580 26 E. of the N. 1/4 Cor.,
 Sec. 28, T.1N., R.2W.

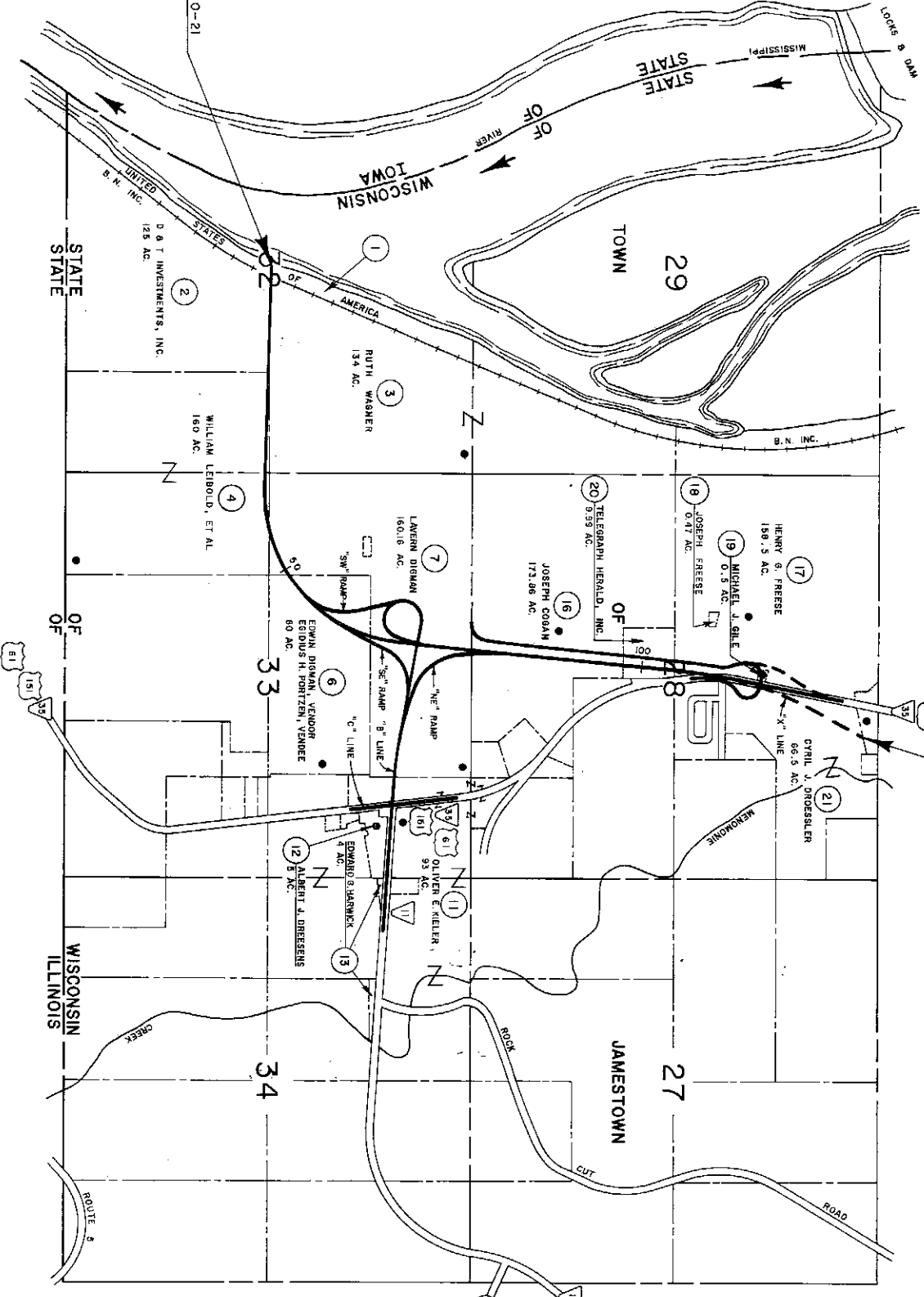
END RELOCATION ORDER PROJECT 1208-0-21
 FEDERAL PROJECT F 012(8)
 STA. 129 + 56.10 X
 Y 196, 175.82
 X 1, 835, 444.16
 191, 95 S. 8, 580 26 E. of the N. 1/4 Cor.,
 Sec. 28, T.1N., R.2W.

Layout Scale
 0 2
 MILES

All coordinates shown on this plat are referenced to the WISCONSIN COORDINATE SYSTEM SOUTH ZONE.

TOTAL NET LENGTH OF CENTERLINE = 2.227 MILES

BEGIN RELOCATION ORDER, PROJECT 1208-0-21
 FEDERAL PROJECT F 012(8)
 STA. 12+80.88



END RELOCATION ORDER, PROJECT 1208-0-21
 FEDERAL PROJECT F 012(8)
 STA. 129+36.10 "X"

REVISION DATE	1777 PROJECT NUMBER	SHEET NUMBER
11-16-78	1208-0-21	4.1
2-19-79	F 012(8)	
5-10-79		
7-16-79		

MAJORITY OF WATER REQUIRED FOR DUBUQUE - DICKEYVILLE ROAD (CITY ISLAND BRIDGE APPROACH) U.S.H. 151 NOT TO SCALE DATE AUGUST 22, 1978	
CONSTRUCTION PROJECT NUMBER	

NOTE:
 ACRES SHOWN ON ABUTTING
 PROPERTIES INCLUDES AREA IN
 EXISTING HIGHWAY RIGHT OF WAY.
 LEGEND
 ● BUILDINGS

SCHEDULE OF LANDS AND INTERESTS REQUIRED

PARCEL NUMBER	SHEET	OWNER	INTEREST REQUIRED	ACRES PERM. REQ'D.	NEW EXIST.	TOTAL REQ'D.	OPERATIONS PROJECT NUMBER
1	4.2	UNITED STATES OF AMERICA	HIGHWAY EASEMENT	0.26	6.10	6.10	1208-0-21
2	4.2	D & T INVESTMENTS, INC.	FEE B. L.H.E.	0.34	6.10	18.90	1208-0-21
3	4.2	RUTH WAGNER	FEE B. L.H.E.	0.46	12.07	12.53	1208-0-21
4	4.2	WILLIAM LIEBOLD, ET AL.	AGREEMENT B	13.35	13.35	146.55	1208-0-21
5	4.2	BURLINGTON NORTHERN INC.	HIGHWAY EASEMENT	0.92	0.92	0.92	1208-0-50

BEARING ORIENTATION AND GRID CONVERSION

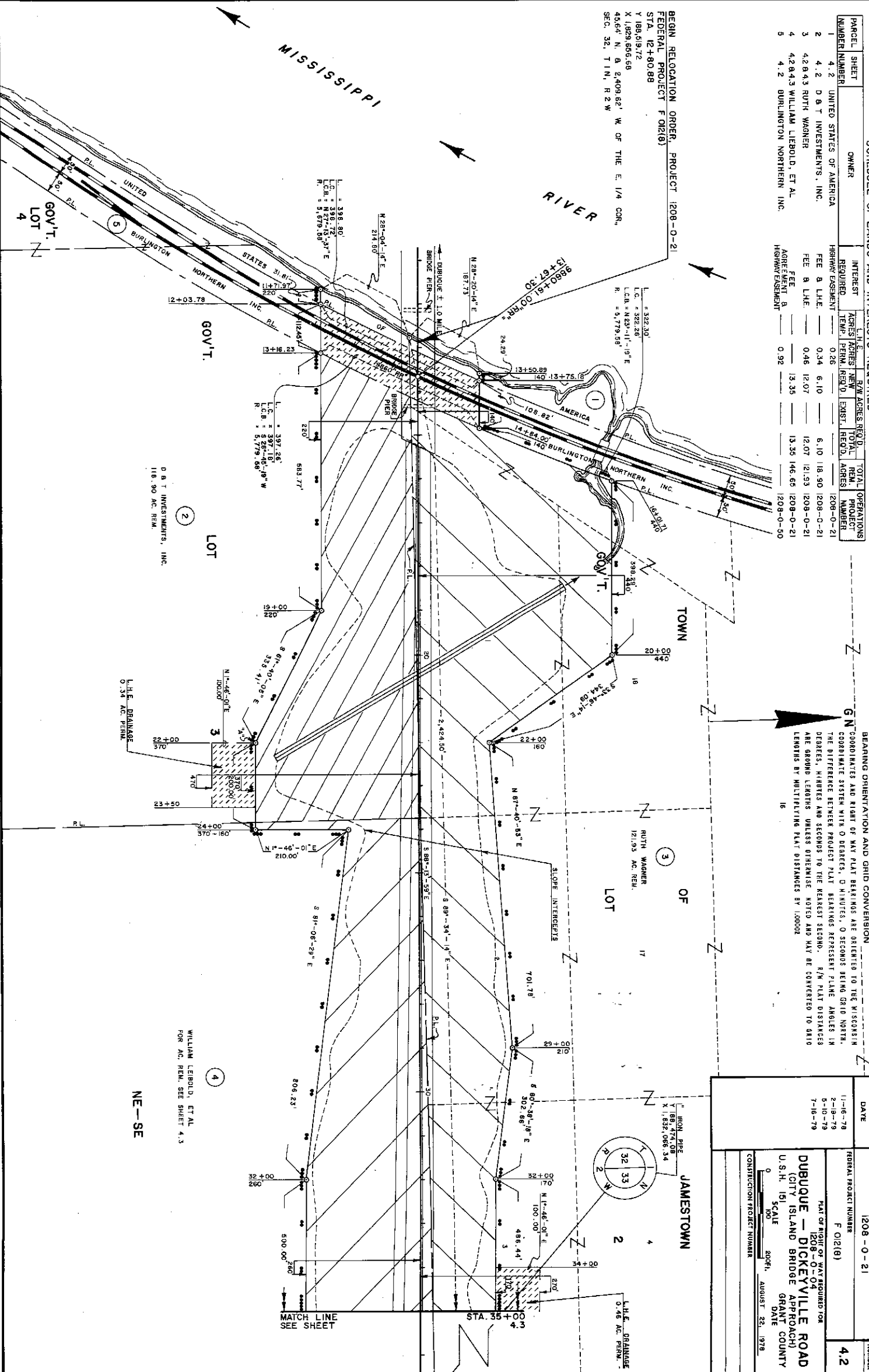
GN COORDINATES AND RIGHT OF WAY PLAT BEARINGS ARE ORIENTED TO THE WISCONSIN COORDINATE SYSTEM WITH 0 DEGREES, 0 MINUTES, 0 SECONDS BEING GRID NORTH. THE DIFFERENCE BETWEEN PROJECT PLAT BEARINGS REPRESENT PLANE ANGLE IN DEGREES, MINUTES AND SECONDS TO THE NEAREST SECOND. 5/8" PLAT DISTANCES ARE ROUNDED LENGTHS UNLESS OTHERWISE NOTED AND MAY BE CONVERTED TO GRID LENGTHS BY MULTIPLYING PLAT DISTANCES BY 1.00002

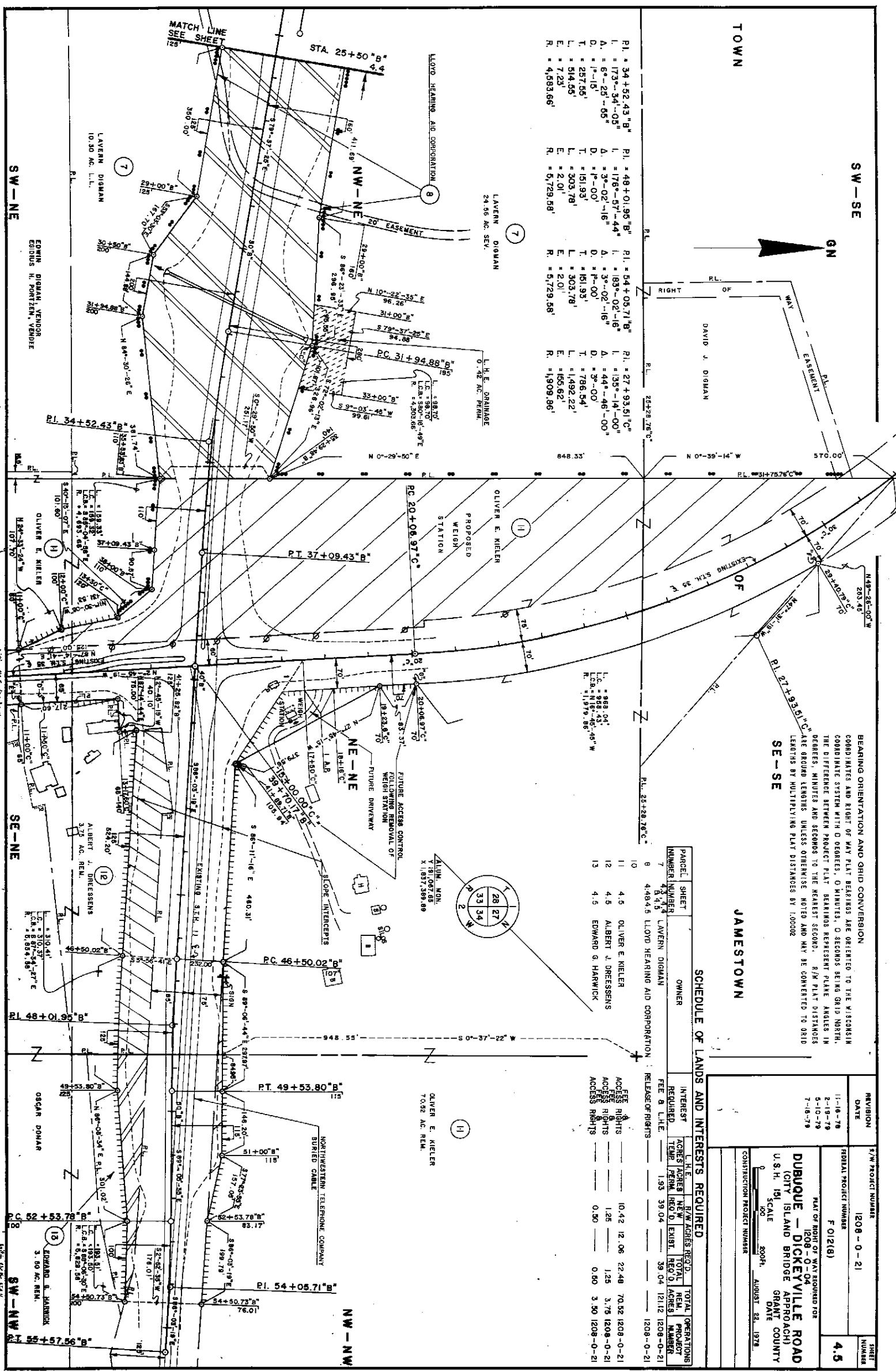
REVISION	DATE	BY/PROJECT NUMBER
1	1-16-78	
2	2-19-78	
3	5-10-78	
4	7-18-78	

SHEET NUMBER
4.2

DUBUQUE - DICKEYVILLE ROAD
CITY ISLAND BRIDGE APPROACH
U.S.H. 161
SCALE 200ft. AUGUST 22, 1978
CONSTRUCTION PROJECT NUMBER

BEGIN RELOCATION ORDER, PROJECT 1208-0-21
FEDERAL PROJECT F 012(B)
STA. 12+80.88
Y 188,019.72
X 1828,606.68
45.64' N. 6 2409.82' W. OF THE E. 1/4 COR.,
SEC. 32, T.1N, R.2W





SW - SE

GN

TOWN

BEARING ORIENTATION AND GRID CONVERSION
 COORDINATES AND RIGHT OF WAY PLAT BEARINGS ARE ORIENTED TO THE WISCONSIN
 COORDINATE SYSTEM WITH DEGREES, 0 MINUTES, 0 SECONDS BEING GRID NORTH.
 THE DIFFERENCE BETWEEN PROJECT PLAT BEARINGS REPRESENT PLATE ANGLES IN
 DEGREES, MINUTES AND SECONDS TO THE NEAREST SECOND. R/W PLAT DISTANCES
 ARE GROUND LENGTHS UNLESS OTHERWISE NOTED AND MAY BE CONVERTED TO GRID
 LENGTHS BY MULTIPLYING PLAT DISTANCES BY 1.00002

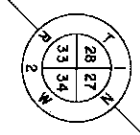
JAMESTOWN

SCHEDULE OF LANDS AND INTERESTS REQUIRED

PARCEL NUMBER	SHEET NUMBER	OWNER	INTEREST REQUIRED	ACRES	FEES	RELEASE OF RIGHTS	TOTAL OPERATIONS PROJECT NUMBER
7	4.3	LAVERN DIGMAN	RELEASE OF RIGHTS	4.4845	1.93	39.04	1212 1208-0-21
8	4.5	LLOYD HEARING AID CORPORATION	RELEASE OF RIGHTS	4.4845	39.04	1212	1208-0-21
10	4.5	OLIVER E. KIELER	RELEASE OF RIGHTS	10.42	12.06	22.48	70.52 1208-0-21
11	4.5	ALBERT J. DRESSENS	RELEASE OF RIGHTS	1.28	1.28	3.76	1208-0-21
12	4.5	EDWARD G. HARWICK	RELEASE OF RIGHTS	0.50	0.50	3.50	1208-0-21
13	4.5	EDWARD G. HARWICK	RELEASE OF RIGHTS	0.50	0.50	3.50	1208-0-21

REVISION	DATE	1/4" PROJECT NUMBER	SHEET NUMBER
11-16-78		1208-0-21	4.5
2-18-79			
5-10-79			
7-18-79			

PLAT OF RIGHT OF WAY REQUIRED FOR
DUBUQUE - DICKEYVILLE ROAD
 (CITY ISLAND BRIDGE APPROACH)
 U.S.H. 191
 SCALE 200 FT.
 AUGUST 22, 1978
 GRANT COUNTY



ALUM. MON.
 X 181,067.65
 Y 1897,389.89

OLIVER E. KIELER
 70.92 AC. REM.

NORTHWESTERN TELEPHONE COMPANY
 BURIED CABLE

EDWARD G. HARWICK
 3.50 AC. REM.

SW - NE

SE - NE

SW - NW

SE - NW

SW - SE

SE - NE

SW - NW

SE - NW

SW - SE

SE - NE

SW - NW

SE - NW

SW - SE

SE - NE

SW - NW

SE - NW

SW - SE

SE - NE

SW - NW

SE - NW

SW - SE

SE - NE

SW - NW

SE - NW

SW - SE

SE - NE

SW - NW

SE - NW

SW - SE

SE - NE

SW - NW

SE - NW

SW - SE

SE - NE

SW - NW

SE - NW

SW - SE

SE - NE

SW - NW

SE - NW

SW - SE

SE - NE

SW - NW

SE - NW

SW - SE

SE - NE

SW - NW

SE - NW

SW - SE

SE - NE

SW - NW

SE - NW

SW - SE

SE - NE

SW - NW

SE - NW

SW - SE

SE - NE

SW - NW

SE - NW

SW - SE

SE - NE

SW - NW

SE - NW

SW - SE

SE - NE

SW - NW

SE - NW

SW - SE

SE - NE

SW - NW

SE - NW

SW - SE

SE - NE

SW - NW

SE - NW

SW - SE

SE - NE

SW - NW

SE - NW

SW - SE

SE - NE

SW - NW

SE - NW

SW - SE

SE - NE

SW - NW

SE - NW

SW - SE

SE - NE

SW - NW

SE - NW

SW - SE

SE - NE

SW - NW

SE - NW

SW - SE

SE - NE

SW - NW

SE - NW

SW - SE

SE - NE

SW - NW

SE - NW

SW - SE

SE - NE

SW - NW

SE - NW

SW - SE

SE - NE

SW - NW

SE - NW

SW - SE

SE - NE

SW - NW

SE - NW

SW - SE

SE - NE

SW - NW

SE - NW

SW - SE

SE - NE

SW - NW

SE - NW

SW - SE

SE - NE

SW - NW

SE - NW

SW - SE

SE - NE

SW - NW

SE - NW

SW - SE

SE - NE

SW - NW

SE - NW

SW - SE

SE - NE

SW - NW

SE - NW

SW - SE

SE - NE

SW - NW

SE - NW

SW - SE

SE - NE

SW - NW

SE - NW

SW - SE

SE - NE

SW - NW

SE - NW

SW - SE

SE - NE

SW - NW

SE - NW

SW - SE

SE - NE

SW - NW

SE - NW

SW - SE

SE - NE

SW - NW

SE - NW

SW - SE

SE - NE

SW - NW

SE - NW

SW - SE

SE - NE

SW - NW

SE - NW

SW - SE

SE - NE

SW - NW

SE - NW

SW - SE

SE - NE

SW - NW

SE - NW

SW - SE

SE - NE

SW - NW

SE - NW

SW - SE

SE - NE

SW - NW

SE - NW

SW - SE

SE - NE

SW - NW

SE - NW

SW - SE

SE - NE

SW - NW

SE - NW

SW - SE

SE - NE

SW - NW

SE - NW

SW - SE

SE - NE

SW - NW

SE - NW

SW - SE

SE - NE

SW - NW

SE - NW

SW - SE

SE - NE

SW - NW

SE - NW

SW - SE

SE - NE

SW - NW

SE - NW

SW - SE

SE - NE

SW - NW

SE - NW

SW - SE

SE - NE

SW - NW

SE - NW

SW - SE

SE - NE

SW - NW

SE - NW

SW - SE

SE - NE

SW - NW

SE - NW

SW - SE

SE - NE

SW - NW

SE - NW

SW - SE

SE - NE

SW - NW

SE - NW

SW - SE

SE - NE

SW - NW

SE - NW

SW - SE

SE - NE

SW - NW

SE - NW

SW - SE

SE - NE

SW - NW

SE - NW

SW - SE

SE - NE

SW - NW

SE - NW

SW - SE

SE - NE

SW - NW

SE - NW

SW - SE

SE - NE

SW - NW

SCHEDULE OF LANDS AND INTERESTS REQUIRED

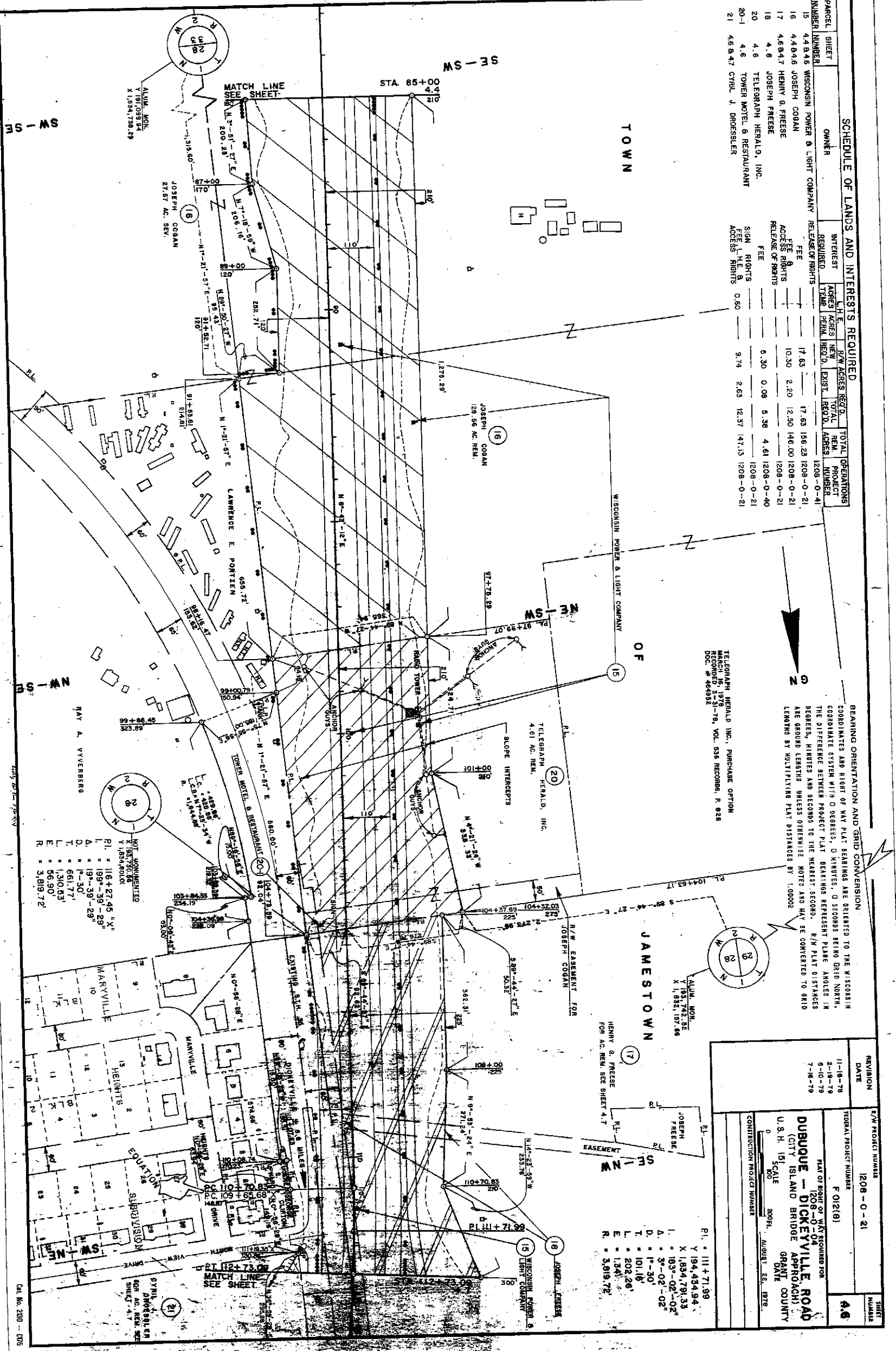
PARCEL NUMBER	SHEET	OWNER	INTEREST REQUIRED	A.C. RECD.	R/W ACRES	NEW ACRES	EXIST. ACRES	TOTAL ACRES	PROJECT NUMBER
15	4, 8, 4, 6	WISCONSIN POWER & LIGHT COMPANY	RELEASE OF RIGHTS		17.63			17.63	1208-0-41
16	4, 8, 4, 6	JOSEPH COGAN	FEE		10.30	2.20	12.50	146.00	1208-0-21
17	4, 8, 4, 7	HENRY G. FRESSE	RELEASE OF RIGHTS		0.30	0.08	5.38	4.61	1208-0-40
18	4, 8	TELEGRAPH HERALD, INC.	FEE		0.60			1208-0-21	
20-1	4, 6	TOWER MOTEL & RESTAURANT	ACCESS RIGHTS		9.74	2.63	12.37	147.13	1208-0-21
21	4, 6, 8, 4, 7	CYRIL J. DROESSLER	ACCESS RIGHTS						

BEARING ORIENTATION AND GRID CONVERSION
 COORDINATES AND RIGHT OF WAY PLAT BEARINGS ARE ORIENTED TO THE WISCONSIN COORDINATE SYSTEM WITH 0 DEGREES, 0 MINUTES, 0 SECONDS BEING GRID NORTH. THE DIFFERENCE BETWEEN PROJECT PLAT BEARINGS REPRESENT PLATE ANGLES IN DEGREES, MINUTES AND SECONDS TO THE NEAREST SECOND. R/W PLAT DISTANCES ARE GRID LENGTHS UNLESS OTHERWISE NOTED AND MAY BE CONVERTED TO GRID LENGTHS BY MULTIPLYING PLAT DISTANCES BY 1.00002

TELEGRAPH HERALD INC., PURCHASE OPTION
 RECORDED 3-23-78, VOL. 635 RECORDS, P. 828
 DOC. # 464932

REVISION DATE	11-18-78
	8-19-79
	7-18-79
R/W PROJECT NUMBER	1208-0-21
TOTAL PROJECT NUMBER	F 012(18)
DATE OF RIGHT OF WAY SECURED FOR	1208-0-04
CONTRACT PROJECT NUMBER	0
CONSTRUCTION PROJECT NUMBER	0

PL. = 111+71.99
 Y. 194,434.94
 X. 1,834,791.33
 L. = 183°-02'-02"
 A. = 3°-02'-02"
 D. = P-30'
 T. = 101.16'
 L. = 202.26'
 E. = 1.84'
 R. = 3,819.72'



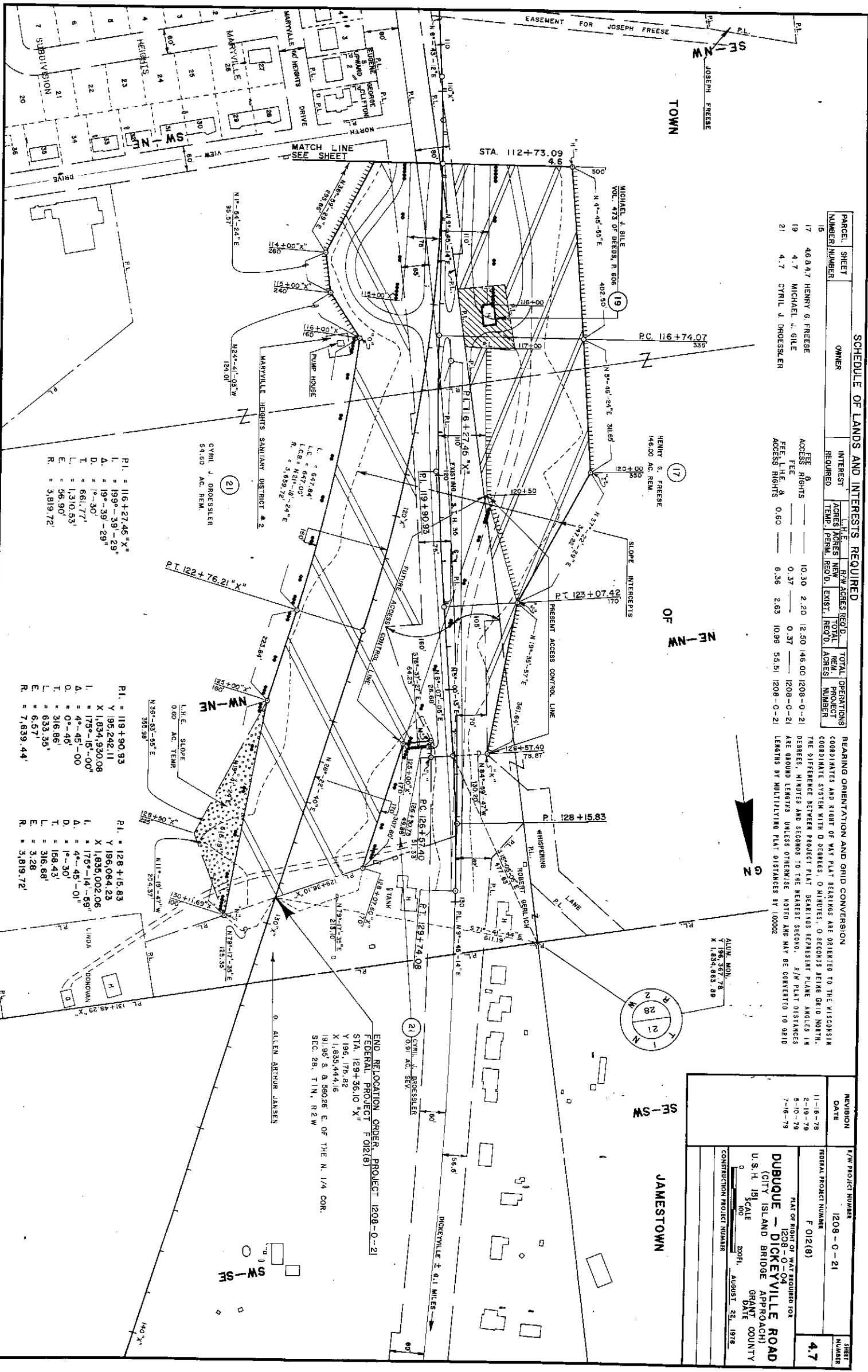
SCHEDULE OF LANDS AND INTERESTS REQUIRED

PARCEL NUMBER	SHEET NUMBER	OWNER	INTEREST REQUIRED		ACRES		R/W ACRES REQ'D		TOTAL R/W ACRES REQ'D		OPERATIONS PROJECT NUMBER
			REQU'D	TERM	EXIST.	REQU'D	EXIST.	REQU'D	REQU'D		
17	4.7	HENRY G. FREESE	0	0	0.37	0.37	10.30	2.20	12.50	146.00	1208-0-21
19	4.7	MICHAEL J. GILE	0	0	0.37	0.37	0.37	0.37	0.74	1208-0-21	
21	4.7	CYRIL J. PROESSLER	0	0	0.60	0.60	6.36	2.63	8.99	55.51	1208-0-21
ACCESS RIGHTS											
FEE L.H.E. R											
ACCESS RIGHTS											

BEARING ORIENTATION AND GRID CONVERSION
 COORDINATE SYSTEM WITH 0 DEGREES, 0 MINUTES, 0 SECONDS BEING GRID NORTH. THE DIFFERENCE BETWEEN PROJECT PLAT BEARINGS REPRESENT PLANE ANGLES IN DEGREES, MINUTES AND SECONDS TO THE NEAREST SECOND. R/W PLAT DISTANCES ARE GROUND LENGTHS UNLESS OTHERWISE NOTED AND MAY BE CONVERTED TO GRID LENGTHS BY MULTIPLYING PLAT DISTANCES BY 1.00002.

REVISION	DATE	R/W PROJECT NUMBER	SHEET NUMBER
11-18-78		1208-0-21	4.7
2-19-79			
5-10-79			
7-16-79			

FEDERAL PROJECT NUMBER: F 012(18)
 PLAT OF RIGHT OF WAY REQUIRED FOR
DUBUQUE - DICKEYVILLE ROAD
 (CITY ISLAND BRIDGE APPROACH)
 U.S.H. 151 SCALE 200 FT.
 AUGUST 22, 1978
 CONSTRUCTION PROJECT NUMBER



END RELOCATION ORDER, PROJECT 1208-0-21
 FEDERAL PROJECT F 012(18)
 STA. 129+56.10 "X"
 Y 196, 175.82
 X 1,835,444.16
 Y 191,987.5
 S. A. 580.26 E. OF THE N. 1/4 COR.
 SEC. 25, T.1N., R.2W.

P1. = 116+27.45 "X"
 L. = 199°-39'-29"
 D. = 1°-30'
 T. = 661.771'
 L. = 1,310.53'
 E. = 56.90'
 R. = 3,819.72'

P1. = 119+90.93
 Y 192,242.11
 X 1,834,930.08
 L. = 175°-15'-00"
 D. = 4°-45'-00"
 T. = 0°-46'
 L. = 316.86'
 E. = 633.35'
 R. = 7,639.44'

P1. = 128+15.83
 Y 196,064.25
 X 1,835,002.06
 L. = 175°-14'-59"
 D. = 4°-45'-01"
 T. = 1°-30'
 L. = 158.43'
 E. = 316.68'
 R. = 3.28

P1. = 122+76.21 "X"
 L. = 199°-39'-29"
 D. = 1°-30'
 T. = 661.771'
 L. = 1,310.53'
 E. = 56.90'
 R. = 3,819.72'

P1. = 119+90.93
 Y 192,242.11
 X 1,834,930.08
 L. = 175°-15'-00"
 D. = 4°-45'-00"
 T. = 0°-46'
 L. = 316.86'
 E. = 633.35'
 R. = 7,639.44'