



State of Wisconsin \ DEPARTMENT OF TRANSPORTATION



January 11, 1979

DIVISION OF HIGHWAYS
4802 Sheboygan Ave.
P.O. Box 1487
Madison, WI 53701

Mr. Nelson Huske, Commissioner
Grant County Highway Department
P.O. Box 150,
1011 N. Adams Street
Lancaster, Wisconsin 53813

Ms. Dorothy Eck
Grant County Clerk
Courthouse
Box 191
Lancaster, Wisconsin 53813

Dear Sir and Madame:

Project 1208-0-21 F 012(8)
Dubuque-Dickeyville Road
(City Island Bridge Approach)
U.S.H. 151
Grant County

The Department of Transportation deems it necessary to make certain revisions on a previously approved right of way plat and to acquire certain lands and interests in lands according to such revisions, for the proper improvement or maintenance of the above-designated project and highway. The revised relocation order of the Department and the map showing the highway as laid out and established and the lands and interests to be acquired are transmitted herewith.

The enclosed relocation order provides that the necessary acquisitions of lands and interests not previously acquired shall be made by the Division of Transportation Facilities, pursuant to Section 84.09(1) or (2), Wisconsin Statutes.

Sincerely,

W. J. Buglass
Deputy Administrator

WJB:bjm
Enc.
cc: DD#1
R/E

JAN 12 1979

RELOCATION ORDER

R-O-572-67

Wisconsin Department of Transportation

PROJECT 1208-0-21 F 012(8)	NAME OF ROAD Dubuque - Dickeyville Road (City Island Bridge Approach)	HIGHWAY U.S.H. 151	COUNTY Grant
RIGHT OF WAY PLAT DATE February 19, 1979	PLAT SHEET NUMBERS 4.0 through 4.7	DATE OF PREVIOUS ORDER December 27, 1978	
DESCRIPTION OF TERMINI OF PROJECT From a point 45.64 feet north and 2409.62 feet west of the east one-quarter corner of Section 32, Township 1 North, Range 2 West, thence northeasterly to a point 461.37 feet south and 124.35 feet east of the north one-quarter corner of Section 28, Township 1 North, Range 2 West.			

To properly establish, lay out, widen, enlarge, extend, construct, reconstruct, improve, or maintain a portion of the highway designated above, it is necessary to relocate or change and acquire certain lands or interests in lands as shown on the right of way plat for the above project.

To effect this change, pursuant to authority granted under Sections 84.02(3) and 84.09, Wisconsin Statutes, the ~~highway~~ ~~Commission hereby orders that~~ **Department of Transportation hereby orders that:**

1. The said highway is hereby laid out and established to the lines and widths as shown on the plat.
2. The required lands or interests in lands as shown on the plat shall be acquired by **the Division of Transportation Facilities, in the name of the State of Wisconsin, pursuant to the provisions of Section 84.09(1) or (2), Wisconsin Statutes.**
3. This order supersedes and amends any previous order issued by the ~~Commission~~ **Department.**

March 1, 1979

DATE



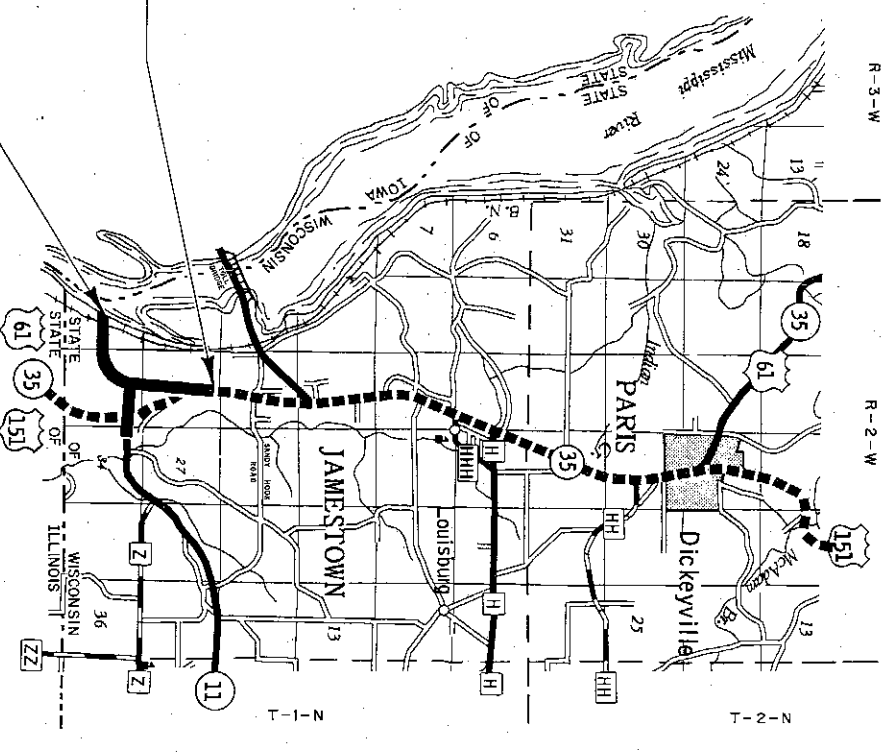
Transportation Facilities Administrator

CONVENTIONAL SIGNS

STATE LINE	--- ---	HIGHWAY HIGHWAY SEPARATION	== ==	GENETRY	□ Gen.
COUNTY LINE	--- ---	HIGHWAY OVERPASS	== ==	FOUNDATION	□ Fdn.
TOWNSHIP AND RANGE LINES	--- ---	RAIL LINE OVERPASS	== ==	GAS PUMP ISLAND	□ Gas Pump
SECTION LINE	--- ---	ALL OTHER BRIDGES	== ==	BUILDING	□ Type
QUARTER LINE	--- ---	STREAM OR RIVER	~ ~ ~	IRON PIN	□ I.P.
SIXTEENTH LINE	--- ---	LAKE	~ ~ ~	POWER POLE	□
NEW CENTERLINE	--- ---	CATTLE PASS	~ ~ ~	TELEPHONE POLE	□
NEW R/W LINE	--- ---	RELOCATED STREAM OR RIVER	~ ~ ~	RAIL LINE	□
OLD R/W LINE	--- ---	TRAVELED WAY	~ ~ ~	TRANSMISSION TOWER AND LINE	□
PROPERTY LINE	--- ---	IS shown only in area of Frontage Roads, Interchanges or Dual Lanes	~ ~ ~	UNDERGROUND CABLE MARKER	□
CORPORATE LIMITS	--- ---	NO ACCESS	~ ~ ~	WELL	□
SLOPE INTERCEPTS	--- ---	LIMITED HIGHWAY EASEMENT	~ ~ ~	STONE MONUMENT	□
LOT, TIE AND OTHER MINOR DASHED LINES	--- ---	(Shading omitted on Aerial Photographs)	~ ~ ~	SEPTIC TANK	□
UNDERGROUND FACILITY (POWER, TELEPHONE, TELEGRAPH, GAS, ETC.)	--- ---		~ ~ ~	WINDMILL	□
NO ACCESS (ACQUISITION)	--- ---		~ ~ ~	R/W POINT	□
	--- ---		~ ~ ~	R/W MONUMENT	□

STANDARD ABBREVIATIONS

ACRES	AC.
ALUMINUM	ALUM.
BARN	B.
DOCUMENT	DOC.
HOUSE	H.
HOUSE TRAILER	H.T.
LANDLOCKED	L.L.
LEFT	L.
LIMITED HIGHWAY EASEMENT	L.H.E.
MONUMENT	MON.
PAGE	P.
PERMANENT PROPERTY LINE	PERM.
REMAINING	P.L.
RIGHT	RT.
SEVERED	SEV.
SHED	S.
VOLUME	VOL.



BEGIN RELOCATION ORDER PROJECT 1208-0-21
 FEDERAL PROJECT F 012181
 STA. 126+57.40 =
 Sta. 180+61.68 - 8.87' LT. Project F 030-1221
 Y 195 906.40
 X 1 834.988 24
 461.37' S. 8 124.35' E. of the N. 1/4 Cor.
 Sec. 28, T.1 N., R.2 W.

LAYOUT SCALE
 0 2
 MILES
 TOTAL NET LENGTH OF CENTERLINE = 2.155 MILES

PARCEL NO.	SHEET NO.	OWNER
1	4.2	United States of America
2	4.2	D & T Investments, Inc.
3	4.3	Ruth Wagner
4	4.2 & 4.3	William Lebold, et al

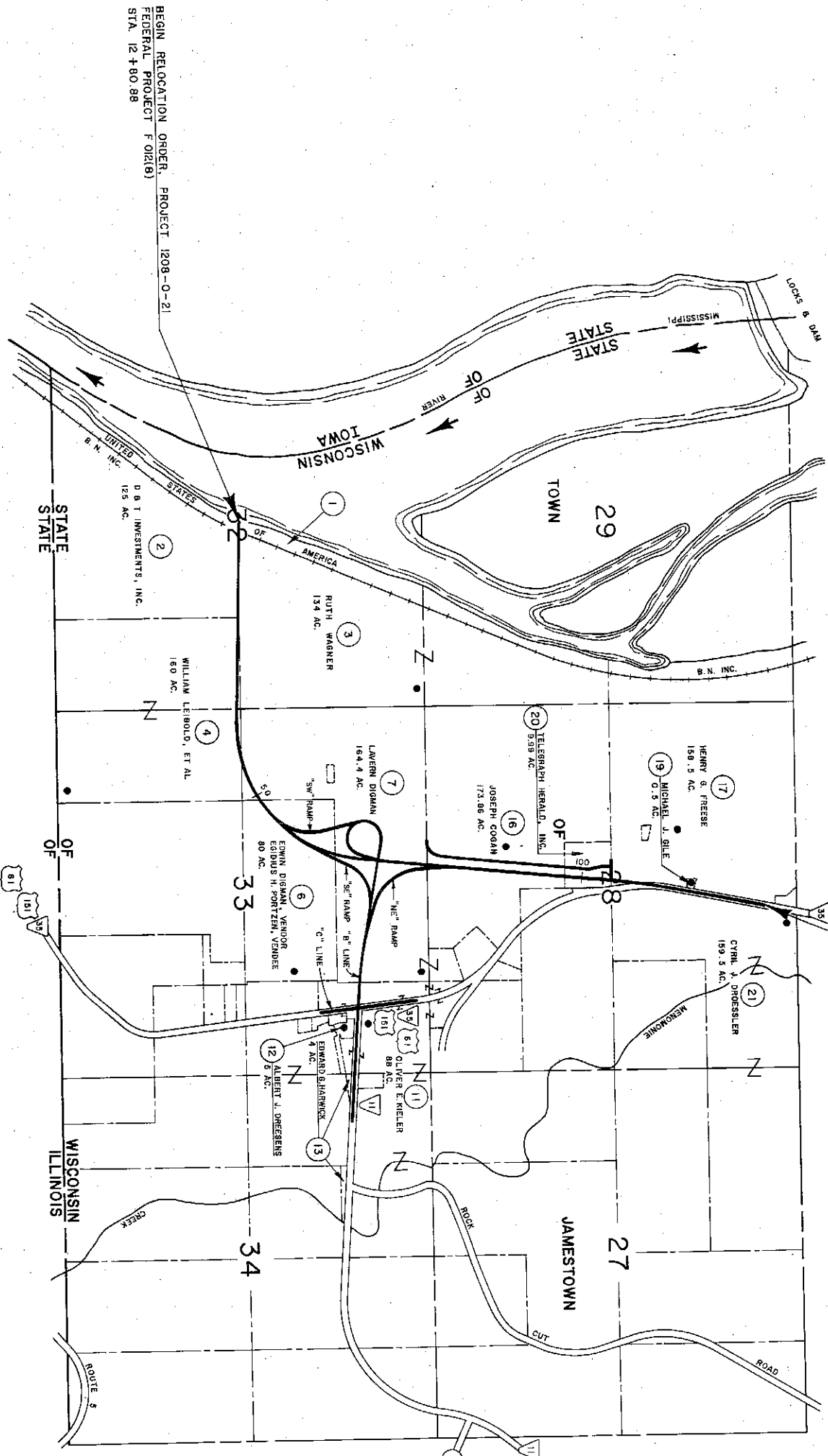
FEDERAL PROJECT NUMBER	1208-0-21	SHEET NUMBER	4.0	TOTAL SHEETS	8
PLAT OF RIGHT OF WAY REQUIRED FOR DUBUQUE-DICKEYVILLE ROAD (CITY ISLAND BRIDGE APPROACH)					
U.S.H. 151			GRANT COUNTY		
CONSTRUCTION PROJECT NUMBER					

PARCEL NO.	SHEET NO.	OWNER
5	4.2	Bu-rington Northern, Inc.
6	4.3	Edwin Dignan, Vendor
7	4.4	Egidius H. Porznan, Vendor
8	4.5	Lavern Dignan
9	4.4	Lloyd Hearing Aid Corporation
10	4.4	Ruth Wagner
11	4.5	Oliver E. Kiehl
12	4.5	Albert J. Dressens
13	4.5	Edward G. Herwick
14	4.4	
15	4.4	Wisconsin Power & Light Company
16	4.6	Joseph Cogan
17	4.6	Henry G. Freese
18	4.6	Joseph Freese
19	4.7	Michael J. Gile
20	4.6	Telegraph Herald, Inc.
21	4.7	Cyril J. Dressler
20-1	4.6	Tower Motel & Restaurant

REVISION DATE	STATE OF WISCONSIN DEPARTMENT OF TRANSPORTATION
11-16-78	
2-19-79	
APPROVED:	DATE
<i>Edward R. Zerbe</i>	11-16-78
Director, Bureau of Road Exhbit	
APPROVED:	DATE
<i>B. J. Mueller</i>	
Director, Bureau of Road Exhbit	
U.S. DEPARTMENT OF TRANSPORTATION FEDERAL HIGHWAY ADMINISTRATION REGION 8 WISCONSIN DIVISION	
APPROVED:	DATE
Division Administrator	

REVISION DATE	R/W PROJECT NUMBER 1208-0-21	SHEET NUMBER 4.1
11-16-78 2-19-79	FEDERAL PROJECT NUMBER F 012(8)	
PLAN OF RIGHT OF WAY REQUIRED FOR DUBUQUE - DICKEYVILLE ROAD (CITY ISLAND BRIDGE APPROACH) U.S.H. 151 NOT TO SCALE DATE AUGUST 22, 1978 CONSTRUCTION PROJECT NUMBER		

END RELOCATION ORDER: PROJECT 1208-0-21
 FEDERAL PROJECT F 012(8)
 STA. 126+57.40



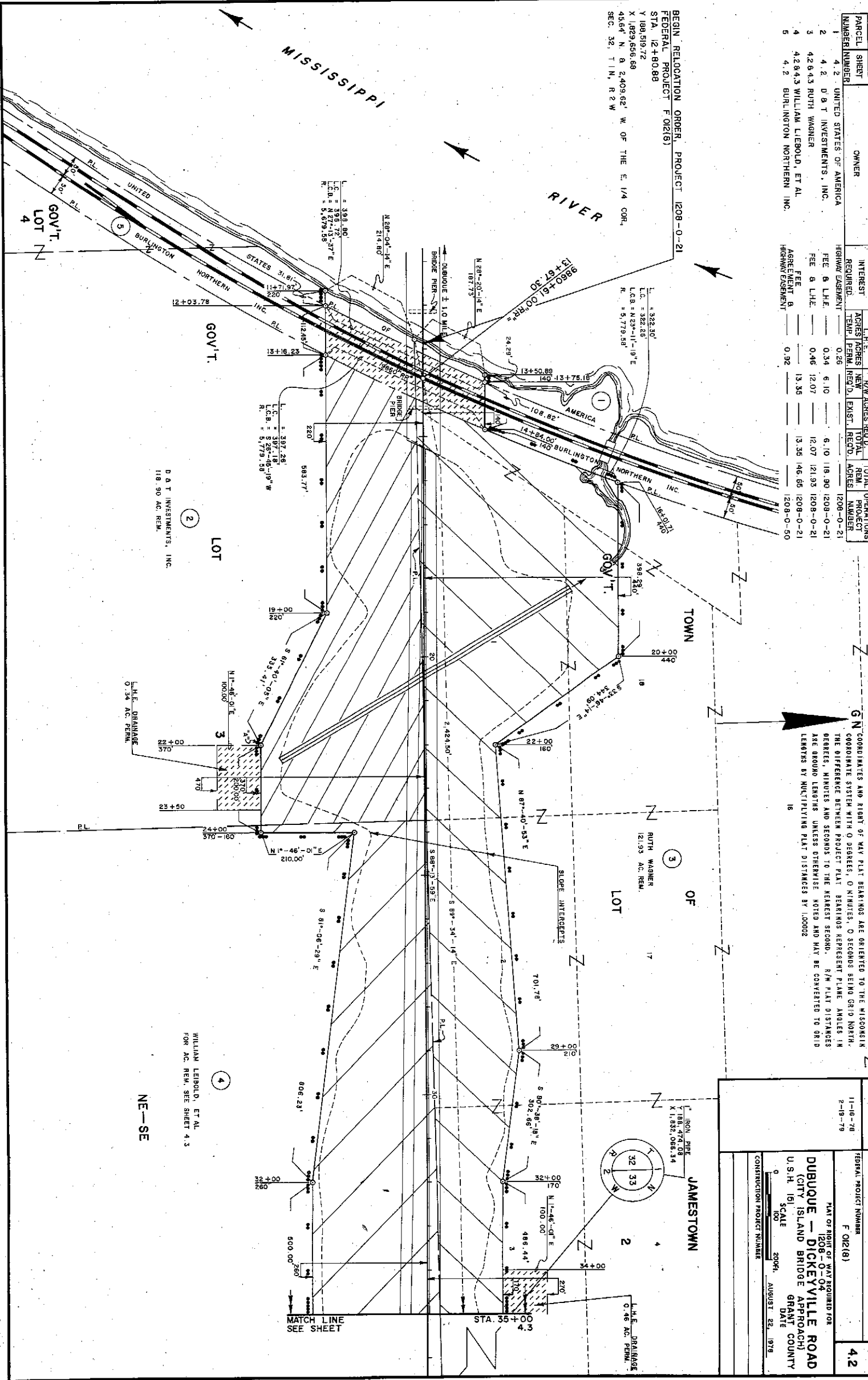
NOTE:
 ACREAGE SHOWN ON ADJUTING
 PROPERTIES INCLUDES AREA IN
 EXISTING HIGHWAY RIGHT OF WAY.
 LEGEND
 ● BUILDINGS

BEGIN RELOCATION ORDER, PROJECT 1208-0-21
 FEDERAL PROJECT F 012(8)
 STA. 12+80.98

SCHEDULE OF LANDS AND INTERESTS REQUIRED

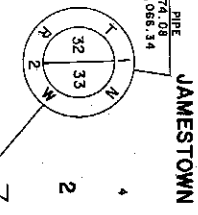
PARCEL NUMBER	SHEET	OWNER	INTEREST REQUIRED	ACRES	NEW	EXIST.	TOTAL	OPERATIONS
1	2	3	4	5	6	7	8	9
4.2	UNITED STATES OF AMERICA	RIGHT OF WAY	0.26	6.10	6.10	118.90	1208-0-21	1208-0-21
4.2	D & T INVESTMENTS, INC.	FEE & L.H.E.	0.34	12.07	12.07	21.93	1208-0-21	1208-0-21
4.2	RUTH WAGNER	FEE & L.H.E.	0.46	13.35	13.35	146.66	1208-0-21	1208-0-21
4.2	WILLIAM LIEBOLD, ET AL	AGREEMENT & HIGHWAY EASEMENT	0.92				1208-0-50	1208-0-50

BEGIN RELOCATION ORDER, PROJECT 1208-0-21
 FEDERAL PROJECT F 02(18)
 STA. 12+80.88
 Y 188,519.72
 X 1,829,656.68
 4564' N @ 2,409.62' W OF THE E. 1/4 COR.
 SEC. 32, T. 1 N., R. 2 W.



BEARING ORIENTATION AND GRID CONVERSION
 COORDINATES AND RIGHT OF WAY PLAT BEARINGS ARE ORIENTED TO THE MISSOURI COORDINATE SYSTEM WITH 0 DEGREES, 0 MINUTES, 0 SECONDS BEING GRID NORTH. THE DIFFERENCE BETWEEN PROJECT PLAT BEARINGS REPRESENT PLANE ANGLES IN DEGREES, MINUTES AND SECONDS TO THE NEAREST SECOND. R/W PLAT DISTANCES ARE GROUND LENGTHS UNLESS OTHERWISE NOTED AND MAY BE CONVERTED TO GRID LENGTHS BY MULTIPLYING PLAT DISTANCES BY 1.00002

REVISION DATE	1-16-78 2-18-79
R/W PROJECT NUMBER	1208-0-21
FEDERAL PROJECT NUMBER	F 02(18)
PLAT OF RIGHT OF WAY REQUIRED FOR	DUBUQUE - DICKEYVILLE ROAD (CITY ISLAND BRIDGE APPROACH)
U.S.H. 161	SCALE 1"=100'
DATE	2094, AUGUST 22, 1978
CONSTRUCTION PROJECT NUMBER	

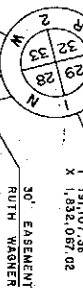


WILLIAM LIEBOLD, ET AL
 FOR AC. REM. SEE SHEET 4.3

REVISION DATE	11-16-78	SHEET NUMBER	4.4
DATE	2-19-79		

N/W PROJECT NUMBER	1208 - 0 - 21
FEDERAL PROJECT NUMBER	F 012(18)
PLAT OR RIGHT OF WAY REQUIRED FOR	DUBUQUE - DICKEYVILLE ROAD
DATE	208 - 0 - 21
SCALE	1" = 200'
CONSTRUCTION PROJECT NUMBER	0
DATE	AUGUST 28, 1978

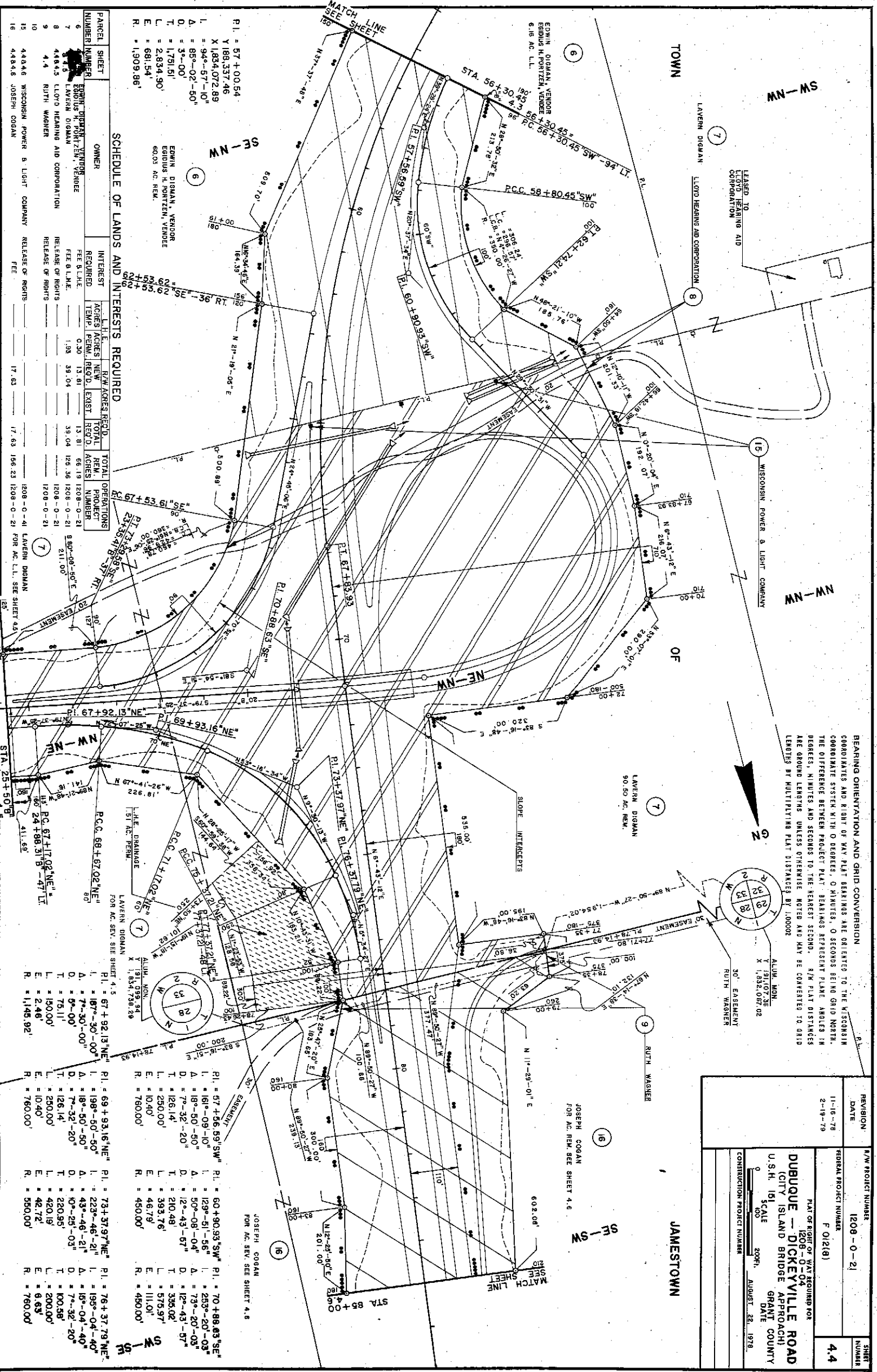
BEARING ORIENTATION AND GRID CONVERSION
 COORDINATES AND RIGHT OF WAY PLAT BEARINGS ARE ORIENTED TO THE WISCONSIN
 COORDINATE SYSTEM WITH 0 DEGREES, 0 MINUTES, 0 SECONDS BEING GRID NORTH.
 THE DIFFERENCE BETWEEN PROJECT PLAT BEARINGS REPRESENT PLANE ANGLES IN
 DEGREES, MINUTES AND SECONDS TO THE NEAREST SECOND. R/W PLAT DISTANCES
 ARE GROUND LENGTHS UNLESS OTHERWISE NOTED AND MAY BE CONVERTED TO GRID
 LENGTHS BY MULTIPLYING PLAT DISTANCES BY 1.00002



ALLUM. MON.
 T. 191.07' 38"
 X. 1,832.087' 02"

JAMESTOWN

JOSEPH COGAN
 FOR AC. REM. SEE SHEET 4.6



SCHEDULE OF LANDS AND INTERESTS REQUIRED

PARCEL NUMBER	SHEET NUMBER	OWNER	INTEREST REQUIRED	ACRES ACRES	NEW	EXIST.	TOTAL	OPERATIONS	PROJECT NUMBER
1	6	EDWIN DIGMAN, VENDOR	RELEASE OF RIGHTS	1.93	13.81	13.81	15.74	1208-0-21	1
2	6	EDMUND H. PORTZEN, VENDOR	RELEASE OF RIGHTS	1.93	13.81	13.81	15.74	1208-0-21	2
3	6	LAVERN DIGMAN	RELEASE OF RIGHTS	1.93	13.81	13.81	15.74	1208-0-21	3
4	6	EDMUND H. PORTZEN, VENDOR	RELEASE OF RIGHTS	1.93	13.81	13.81	15.74	1208-0-21	4
5	6	LAVERN DIGMAN	RELEASE OF RIGHTS	1.93	13.81	13.81	15.74	1208-0-21	5
6	6	EDMUND H. PORTZEN, VENDOR	RELEASE OF RIGHTS	1.93	13.81	13.81	15.74	1208-0-21	6
7	6	LAVERN DIGMAN	RELEASE OF RIGHTS	1.93	13.81	13.81	15.74	1208-0-21	7
8	6	EDMUND H. PORTZEN, VENDOR	RELEASE OF RIGHTS	1.93	13.81	13.81	15.74	1208-0-21	8
9	6	LAVERN DIGMAN	RELEASE OF RIGHTS	1.93	13.81	13.81	15.74	1208-0-21	9
10	6	EDMUND H. PORTZEN, VENDOR	RELEASE OF RIGHTS	1.93	13.81	13.81	15.74	1208-0-21	10
11	6	LAVERN DIGMAN	RELEASE OF RIGHTS	1.93	13.81	13.81	15.74	1208-0-21	11
12	6	EDMUND H. PORTZEN, VENDOR	RELEASE OF RIGHTS	1.93	13.81	13.81	15.74	1208-0-21	12
13	6	LAVERN DIGMAN	RELEASE OF RIGHTS	1.93	13.81	13.81	15.74	1208-0-21	13
14	6	EDMUND H. PORTZEN, VENDOR	RELEASE OF RIGHTS	1.93	13.81	13.81	15.74	1208-0-21	14
15	6	LAVERN DIGMAN	RELEASE OF RIGHTS	1.93	13.81	13.81	15.74	1208-0-21	15
16	6	EDMUND H. PORTZEN, VENDOR	RELEASE OF RIGHTS	1.93	13.81	13.81	15.74	1208-0-21	16

SW-SE GN

TOWN

BEARING ORIENTATION AND GRID CONVERSION
 COORDINATES AND RIGHT OF WAY PLAT BEARINGS ARE ORIENTED TO THE WISCONSIN
 COORDINATE SYSTEM WITH 0 DEGREES, 0 MINUTES, 0 SECONDS BEING GRID NORTH.
 THE DIFFERENCE BETWEEN PROJECT PLAT BEARINGS REPRESENT PLANE ANGLES IN
 DEGREES, MINUTES AND SECONDS TO THE NEAREST SECOND. R/W PLAT DISTANCES
 ARE GROUND LENGTHS UNLESS OTHERWISE NOTED AND MAY BE CONVERTED TO GRID
 LENGTHS BY MULTIPLYING PLAT DISTANCES BY 1.0002

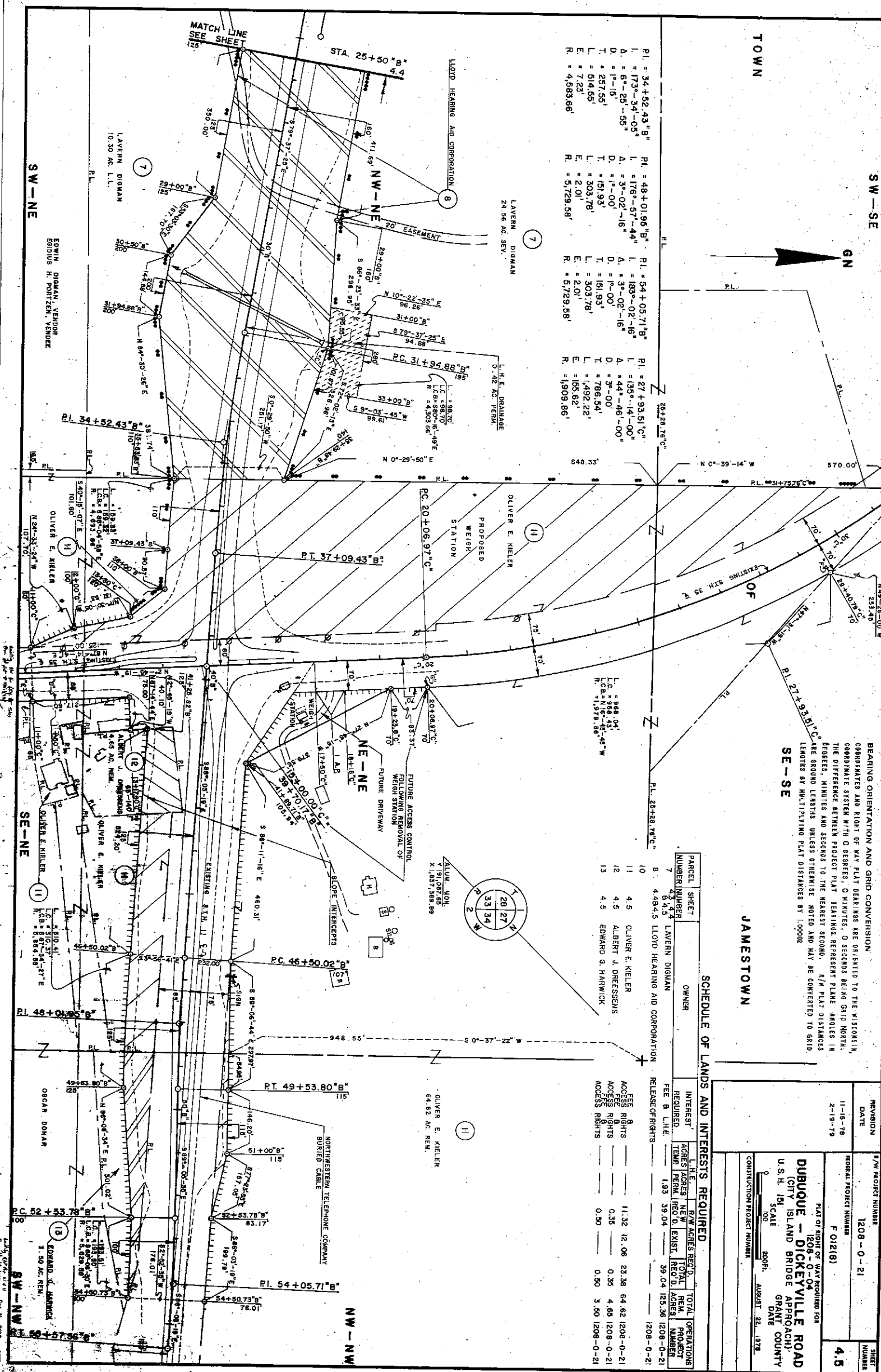
JAMESTOWN

SCHEDULE OF LANDS AND INTERESTS REQUIRED

PARCEL NUMBER	SHEET	OWNER	INTEREST REQUIRED	ACRES		TOTAL REM. PROJECT NUMBER
				PLAT	R/W ACRES REQ'D.	
7	4, 5, 6	LLOYD HEARING AID CORPORATION	RELEASE OF RIGHTS	1.93	39.04	39.04 125.36 1208-0-21
8	4, 5, 6	LLOYD HEARING AID CORPORATION	RELEASE OF RIGHTS	1.93	39.04	39.04 125.36 1208-0-21
10	4, 5	OLIVER E. KIELER	ACCESS RIGHTS	11.32	12.06	23.38 64.62 1208-0-21
11	4, 5	ALBERT J. DRESSEUS	ACCESS RIGHTS	0.35	0.35	4.95 1208-0-21
12	4, 5	EDWARD G. HANWICK	ACCESS RIGHTS	0.50	0.50	3.50 1208-0-21

REVISION	DATE	R/W PROJECT NUMBER	SHEET NUMBER
11-16-76	1208-0-21	1208-0-21	4, 5
2-19-79			

DUBUQUE - DICKEYVILLE ROAD
 (CITY ISLAND BRIDGE APPROACH)
 U.S.H. DISTRICT COURT
 GRANT COUNTY
 DATE
 SCALE
 300 FT.
 AUGUST 22, 1978
 CONSTRUCTION PROJECT NUMBER

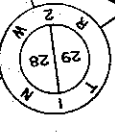


SCHEDULE OF LANDS AND INTERESTS REQUIRED

PARCEL NUMBER	SHEET NUMBER	OWNER	INTEREST REQUIRED	L. I. E. ACRES		R/W ACRES		TOTAL ACRES	OPERATIONS PROJECT NUMBER
				NEW	EXIST.	NEW	EXIST.		
15	4, 4, 6	WISCONSIN POWER & LIGHT COMPANY	RELEASE OF RIGHTS	17.63	17.63	166.23	166.23	1208-0-41	
16	4, 4, 6	JOSEPH COGAN	FEES	8.00	2.99	10.99	147.51	1208-0-21	
17	4, 6, 4, 7	HENRY G. FRESSE	ACCESS RIGHTS	—	—	—	—	1208-0-21	
18	4, 6	JOSEPH FRESSE	RELEASE OF RIGHTS	—	—	—	—	1208-0-21	
20	4, 6	TELEGRAPH HERALD, INC.	FEES	5.30	0.08	5.38	4.61	1208-0-40	
20-1	4, 6	TOWER MOTEL & RESTAURANT	FEES	—	—	—	—	1208-0-21	

BEARING ORIENTATION AND GRID CONVERSION
 COORDINATES AND RIGHT OF WAY PLAT BEARINGS ARE ORIENTED TO THE WISCONSIN COORDINATE SYSTEM WITH 0 DEGREES, 0 MINUTES, 0 SECONDS BEING GRID NORTH. THE DIFFERENCE BETWEEN PROJECT PLAT BEARINGS REPRESENT PLANE ANGLES IN DEGREES, MINUTES AND SECONDS TO THE NEAREST SECOND. R/W PLAT DISTANCES ARE GROUND LENGTHS UNLESS OTHERWISE NOTED AND MAY BE CONVERTED TO GRID LENGTHS BY MULTIPLYING PLAT DISTANCES BY 1.00002.

TELEGRAPH HERALD, INC., PURCHASE OPTION
 RECORDED 3-21-79, VOL. 538 RECORDS, P. 826
 DCC # 444952

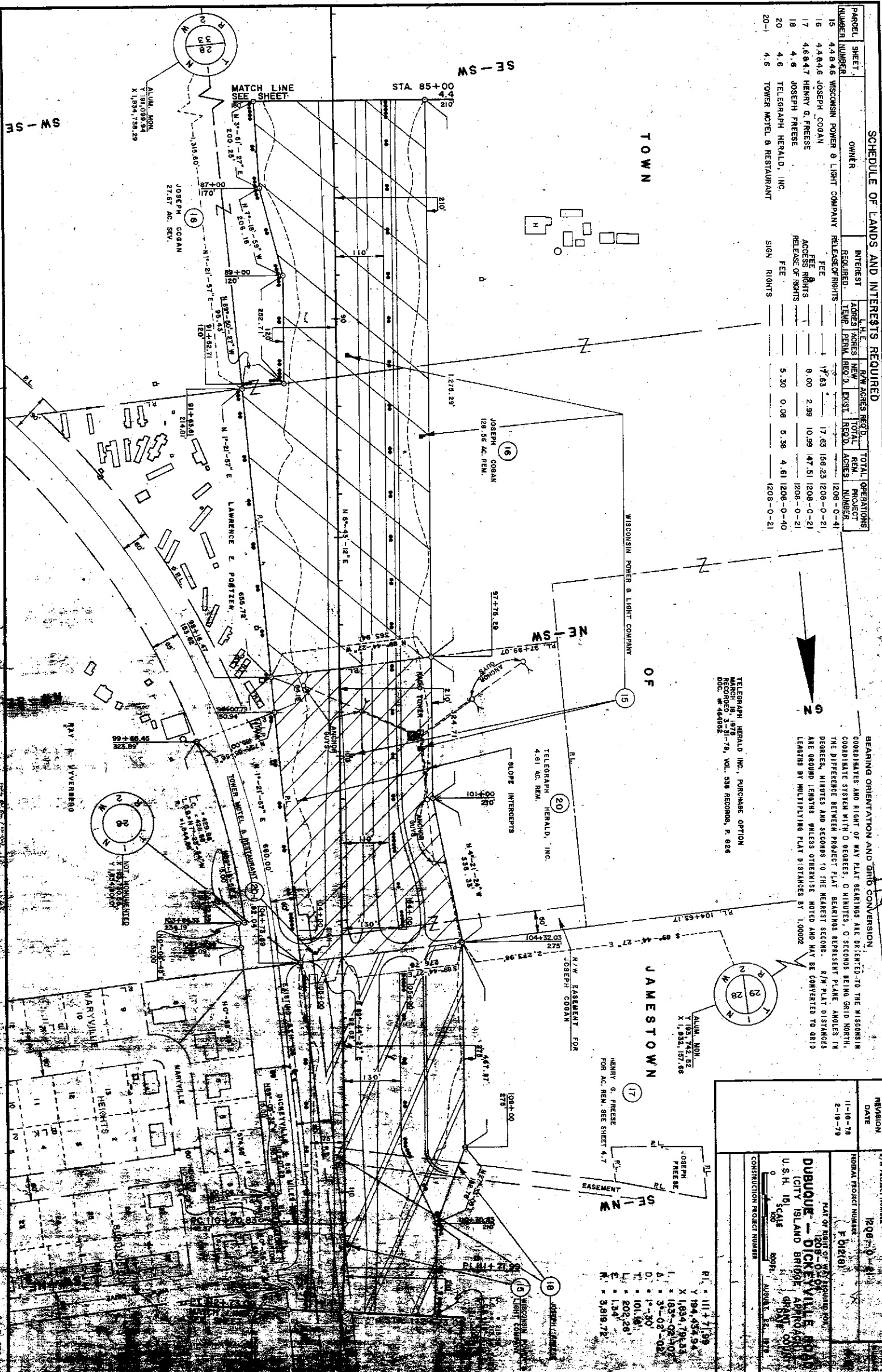


REVISION	DATE	R/W PROJECT NUMBER
1	11-16-78	1208-0-41
2	2-19-79	1208-0-21

PLAT OF RIGHT OF WAY REQUIRED FOR
DUBOQUE - DICKERVILLE ROAD
 (CITY ISLAND BRIDGE APPROACH)
 U.S.H. 161 SCALE
 NORTH ARROW

CONSTRUCTION PROJECT NUMBER

R. = 1114.7129
 Y = 194,434.94
 X = 1,834,794.23
 L = 1,834,794.23
 D. = 1.30
 T. = 101.16
 L. = 202.26
 E. = 1.34
 N. = 3,819.72



SW - SW

SE - SW

TOWN

NE - SW

JAMESTOWN

SW - SW

SCHEDULE OF LANDS AND INTERESTS REQUIRED

PARCEL NUMBER	SHEET NUMBER	OWNER	INTEREST REQUIRED	ACRES		TOTAL PROJECT ACRES	TOTAL OPERATIONS PROJECT NUMBER
				NEW	EXIST.		
15							
17	4.7	HENRY G. FRESSE	ACCESS RIGHTS	6.00	2.99	10.99	1208-0-21
19	4.7	MICHAEL J. GILE	ACCESS RIGHTS	0.37	0.37	1208-0-21	
21	4.7	CYRIL J. DROESSLER	ACCESS RIGHTS	0.73	3.28	4.01	155.49 (208-0-21)

BEARING ORIENTATION AND GRID CONVERSION
 COORDINATES AND RIGHT OF WAY PLAT BEARINGS ARE ORIENTED TO THE MISSOURI COORDINATE SYSTEM WITH 0 DEGREES, 0 MINUTES, 0 SECONDS BEING GRID NORTH. THE DIFFERENCE BETWEEN PROJECT PLAT BEARINGS REPRESENT PLANE ANGLES IN DEGREES, MINUTES AND SECONDS TO THE NEAREST SECOND. R/W PLAT DISTANCES ARE GROUND LENGTHS UNLESS OTHERWISE NOTED AND MAY BE CONVERTED TO GRID LENGTHS BY MULTIPLYING PLAT DISTANCES BY 1.00002

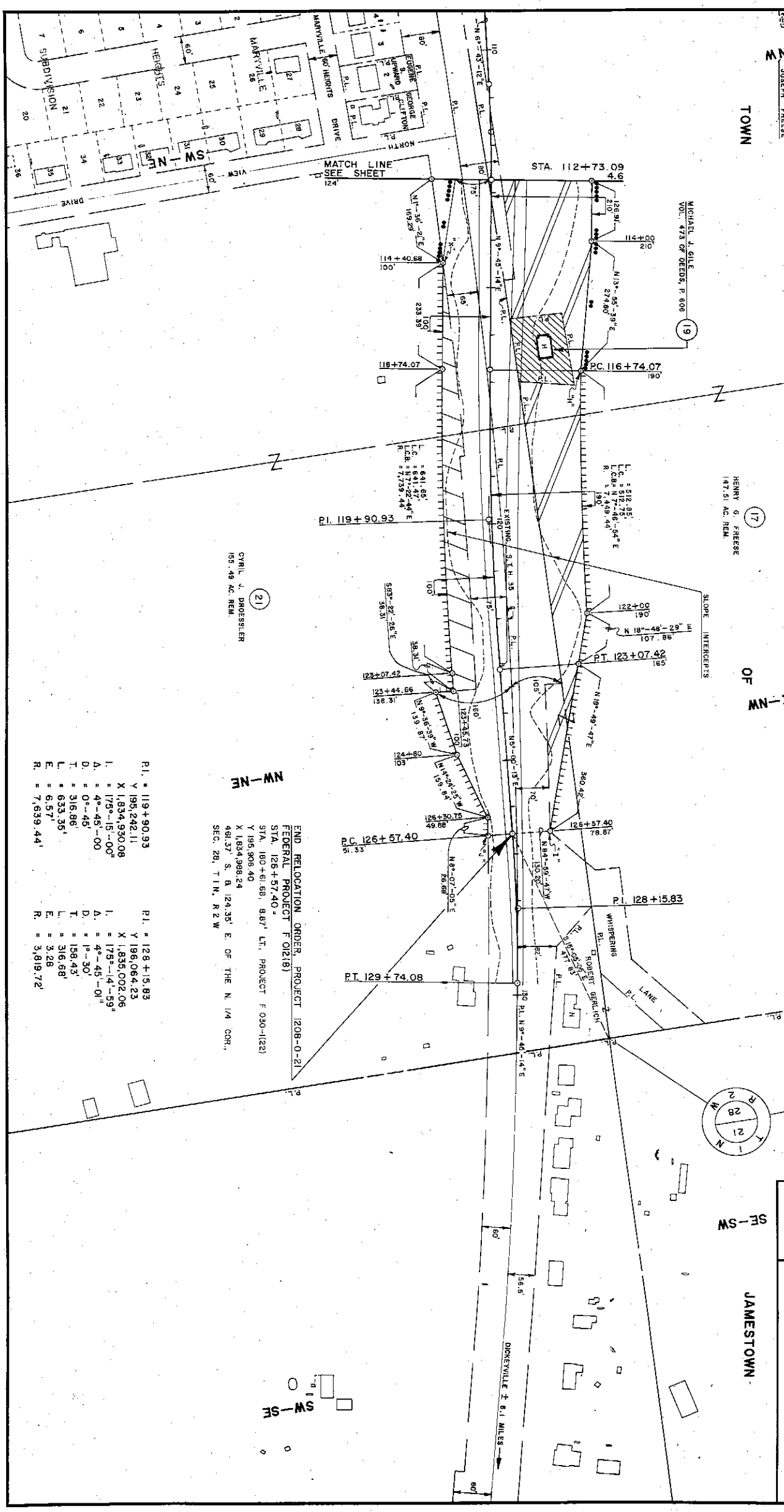
REVISION	DATE	F/W PROJECT NUMBER	SHEET NUMBER
	11-16-78	1208-0-21	4.7
	2-19-79		

PLAT OF RIGHT OF WAY REQUIRED FOR
DUBOQUE - DICKEYVILLE ROAD
 (CITY ISLAND BRIDGE APPROACH)
 U.S.H. 151
 SCALE 1"=400'
 DATE AUGUST 22, 1979
 CONSTRUCTION PROJECT NUMBER

TOWN

OF

JAMESTOWN



END RELOCATION ORDER, PROJECT 1208-0-21
 FEDERAL PROJECT F 012(18)
 STA. 126+57.40 ±
 STA. 160+61.68, 887' LT., PROJECT F 030-(122)
 Y 195,906.40
 X 1,834,988.24
 491.37' S. 8.124.35' E. OF THE N. 1/4 COR.,
 SEC. 28, T. 1 N., R. 2 W.

P.I. = 119+90.93
 X 1,834,930.08
 Y 195,242.11
 I. = 175°-15'-00"
 A. = 4°-45'-00"
 D. = 0°-45'
 T. = 316.86'
 L. = 633.35'
 E. = 6.57'
 R. = 7,639.44'

P.I. = 128+15.83
 X 1,835,002.06
 Y 196,064.23
 I. = 175°-14'-59"
 A. = 4°-45'-01"
 D. = 1°-30'
 T. = 158.43'
 L. = 316.68'
 E. = 3.28'
 R. = 3,819.72'