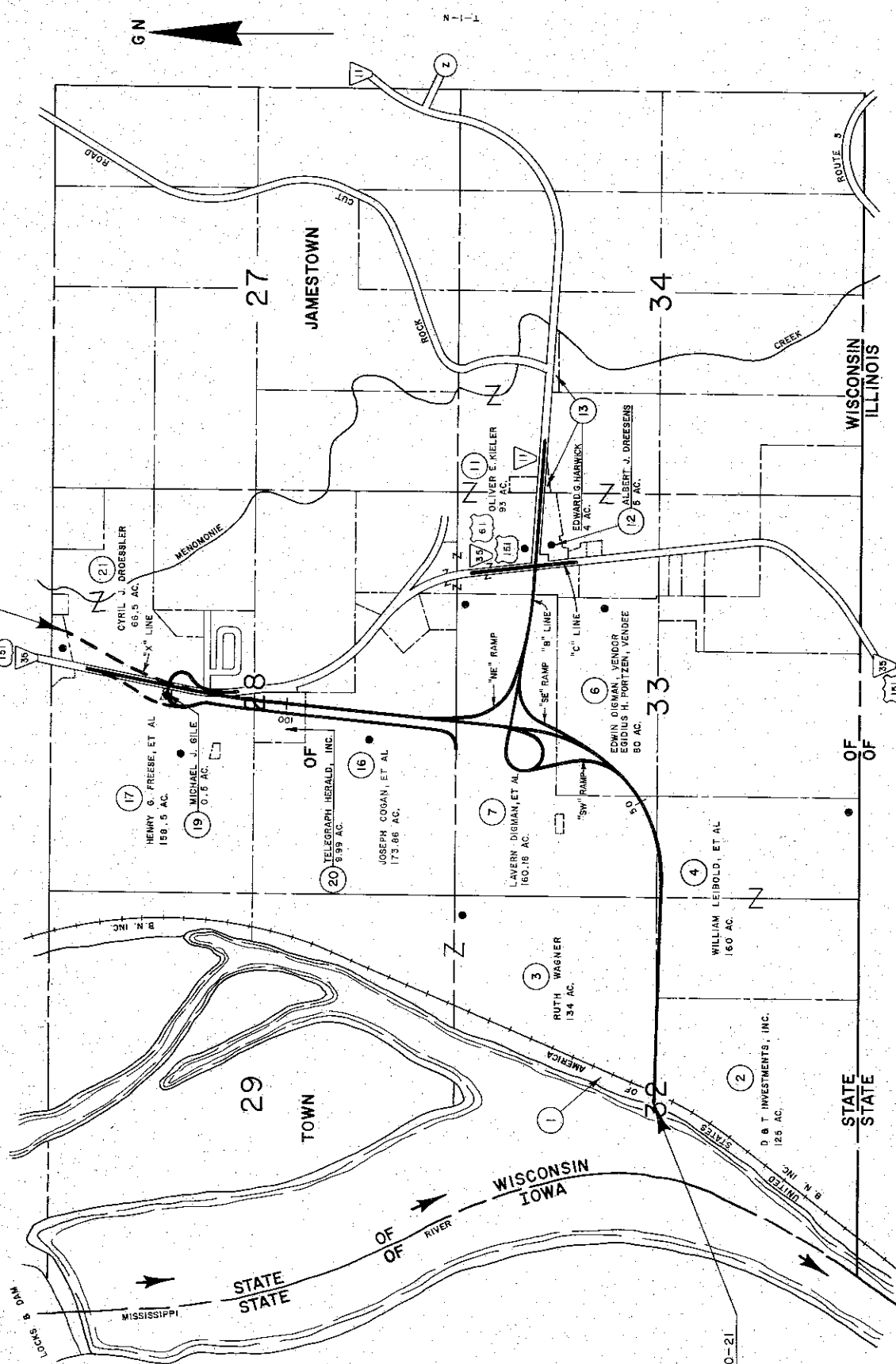


REVISION DATE	11-16-79	FEDERAL PROJECT NUMBER	1208-0-21	SHEET NUMBER	4.1
	2-19-79				
	5-10-79				
	7-16-79				
	2-27-80				
END RELOCATION ORDER, PROJECT 1208-0-21 FEDERAL PROJECT F 012(8) STA. 129+36.10 "X"		DUBUQUE - DICKEYVILLE ROAD (CITY ISLAND BRIDGE APPROACH) GRANT COUNTY U.S.H. 151 NOT TO SCALE AUGUST 25, 1979		CONSTRUCTION PROJECT NUMBER	



END RELOCATION ORDER, PROJECT 1208-0-21
FEDERAL PROJECT F 012(8)
STA. 129+36.10 "X"

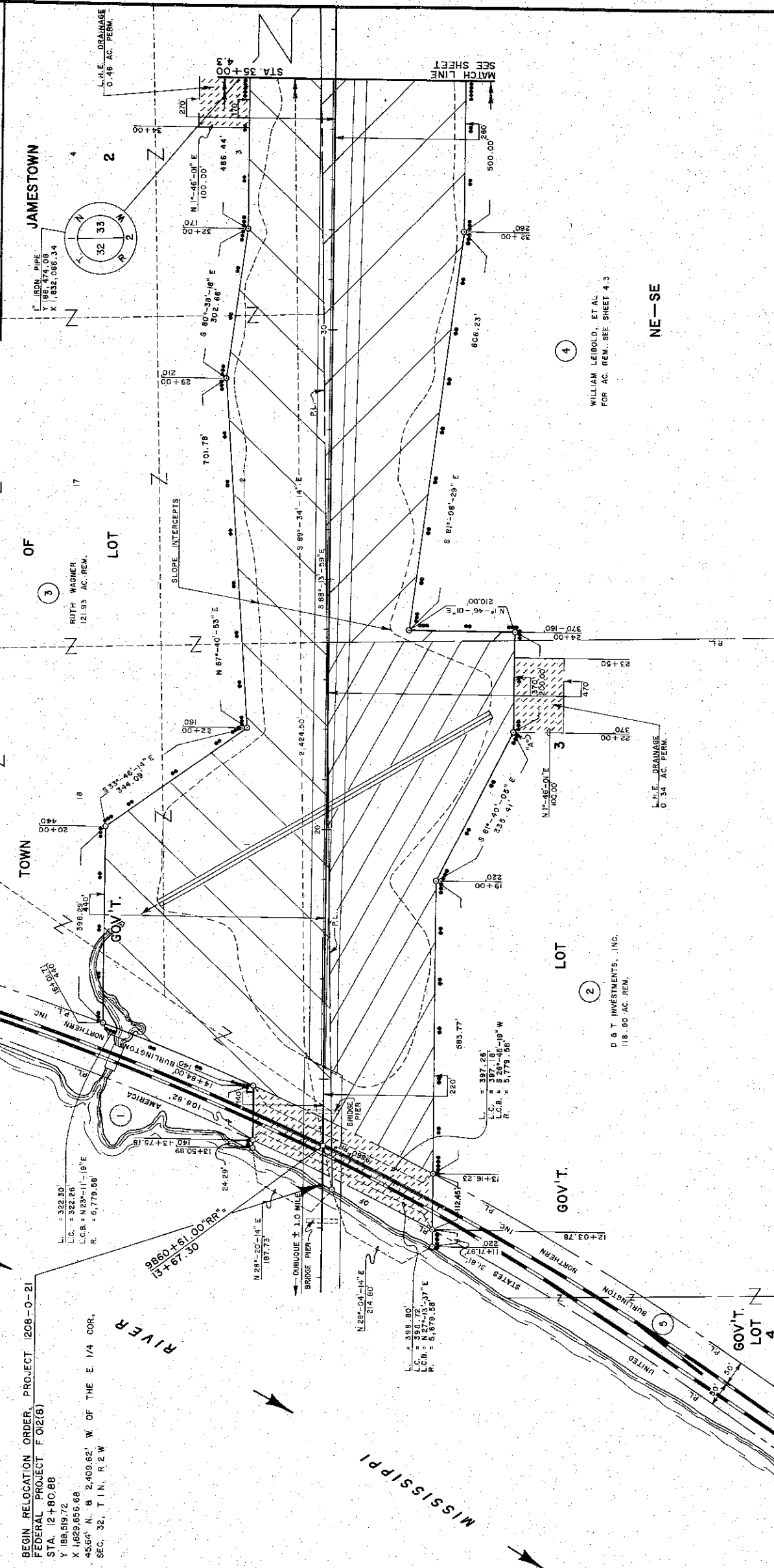
BEGIN RELOCATION ORDER, PROJECT 1208-0-21
FEDERAL PROJECT F 012(8)
STA. 12+80.68

PARCEL NUMBER	SHEET NUMBER	OWNER	INTEREST REQUIRED	L.H.E.	R/W ACRES REQ'D.	ACRES ACROSS NEW PROJECT	TOTAL ACRES REQ'D.	EXIST.	OPERATIONS
1	4.2	UNITED STATES OF AMERICA	HIGHWAY EASEMENT	0.26	0.26	1208-0-21	1208-0-21	6.10	118.90
2	4.2	D & T INVESTMENTS, INC.	FEE & L.H.E.	0.34	6.10	1208-0-21	1208-0-21	12.07	121.92
3	4.2	RUTH WAGNER	FEE & L.H.E.	0.46	12.07	1208-0-21	1208-0-21	13.35	146.65
4	4.2	WILLIAM LIEBOLD, ET AL	FEE	13.35	13.35	1208-0-21	1208-0-21	0.92	1208-0-80
5	4.2	BURLINGTON NORTHERN, INC.	AGREEMENT & HIGHWAY EASEMENT	0.92	0.92	1208-0-80	1208-0-80		

SCHEDULE OF LANDS AND INTERESTS REQUIRED

BEARING ORIENTATION AND GRID CONVERSION
 COORDINATES AND RIGHT-OF-WAY PLAT BEARINGS ARE ORIENTED TO THE WISCONSIN
 COORDINATE SYSTEM WITH 0 DEGREES, 0 MINUTES, 0 SECONDS BEING GRID NORTH.
 THE DIFFERENCE BETWEEN PROJECT PLAT BEARINGS REPRESENT PLANE ANGLES IN
 DEGREES, MINUTES AND SECONDS TO THE NEAREST SECOND. R/W PLAT DISTANCES
 ARE GROUND LENGTHS UNLESS OTHERWISE NOTED AND MAY BE CONVERTED TO GRID
 LENGTHS BY MULTIPLYING PLAT DISTANCES BY 1.00002

BEGIN RELOCATION ORDER, PROJECT 1208-0-21
 FEDERAL PROJECT F 012(8)
 STA. 12+80.88
 Y 188,519.72
 X 1,629,856.68
 4564' N. & 2,409.62' W. OF THE E. 1/4 COR.
 SEC. 32, T.1N, R.2W



WILLIAM LIEBOLD, ET AL
 FOR AC. REM. SEE SHEET 4.3

D & T INVESTMENTS, INC.
 118.90 AC. REM.

NE-SE

REVISION DATE	1-18-78	R/W PROJECT NUMBER	1208-0-21	SHEET NUMBER	4.3
	2-19-79	FEDERAL PROJECT NUMBER	F 012(B)	PLAT OF RIGHT OF WAY REQUIRED FOR 1208-0-04 DUBUQUE - DICKEYVILLE ROAD (CITY ISLAND BRIDGE APPROACH) GRANT COUNTY U.S.H. 151 SCALE 1" = 200 FT. AUGUST 22, 1978 CONSTRUCTION PROJECT NUMBER	
	5-10-79				
	7-16-79				
	2-27-80				

BEARING ORIENTATION AND GRID CONVERSION COORDINATES AND RIGHT OF WAY PLAT BEARINGS ARE ORIENTED TO THE WISCONSIN COORDINATE SYSTEM WITH D DEGREES, 0 MINUTES, 0 SECONDS BEING GRID NORTH. THE DIFFERENCE BETWEEN PROJECT PLAT BEARINGS REPRESENT PLANE ANGLES IN DEGREES, MINUTES AND SECONDS TO THE NEAREST SECOND. R/W PLAT DISTANCES ARE GROUND LENGTHS UNLESS OTHERWISE NOTED AND MAY BE CONVERTED TO GRID LENGTHS BY MULTIPLYING PLAT DISTANCES BY 1.00002.

PARCEL NUMBER	SHEET NUMBER	OWNER	INTEREST	ACRES	TEMP. PERM. REQ'D.	EXIST.	R/W ACRES REQ'D.	TOTAL REM. ACRES	TOTAL OPERATIONS PROJECT NUMBER
3	4.2, 4.3	RUTH WAGNER	FEE & L.H.E.	0.46	12.07	12.07	13.35	146.68	1208-0-21
4	4.2, 4.3	WILLIAM LIEBOLD, ET AL	FEE	0.30	13.81	13.81	66.19	1208-0-21	1208-0-21
6	4.3, 4.4	EDWIN DIGMAN, VENDOR	FEE	40.97	40.97	40.97	22.63	1208-0-21	1208-0-21
7	8.2, 5	LAVERN DIGMAN, ET AL	FEE	40.97	40.97	40.97	22.63	1208-0-21	1208-0-21

* DOES NOT INCLUDE REMNANT ACRES

GOV'T. TOWN LOT 4

ALUM. MON. Y 91.1074 X 1,932.067

IRON PIPE Y 186.474, 08 X 1,932.066, 34

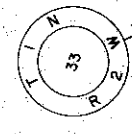
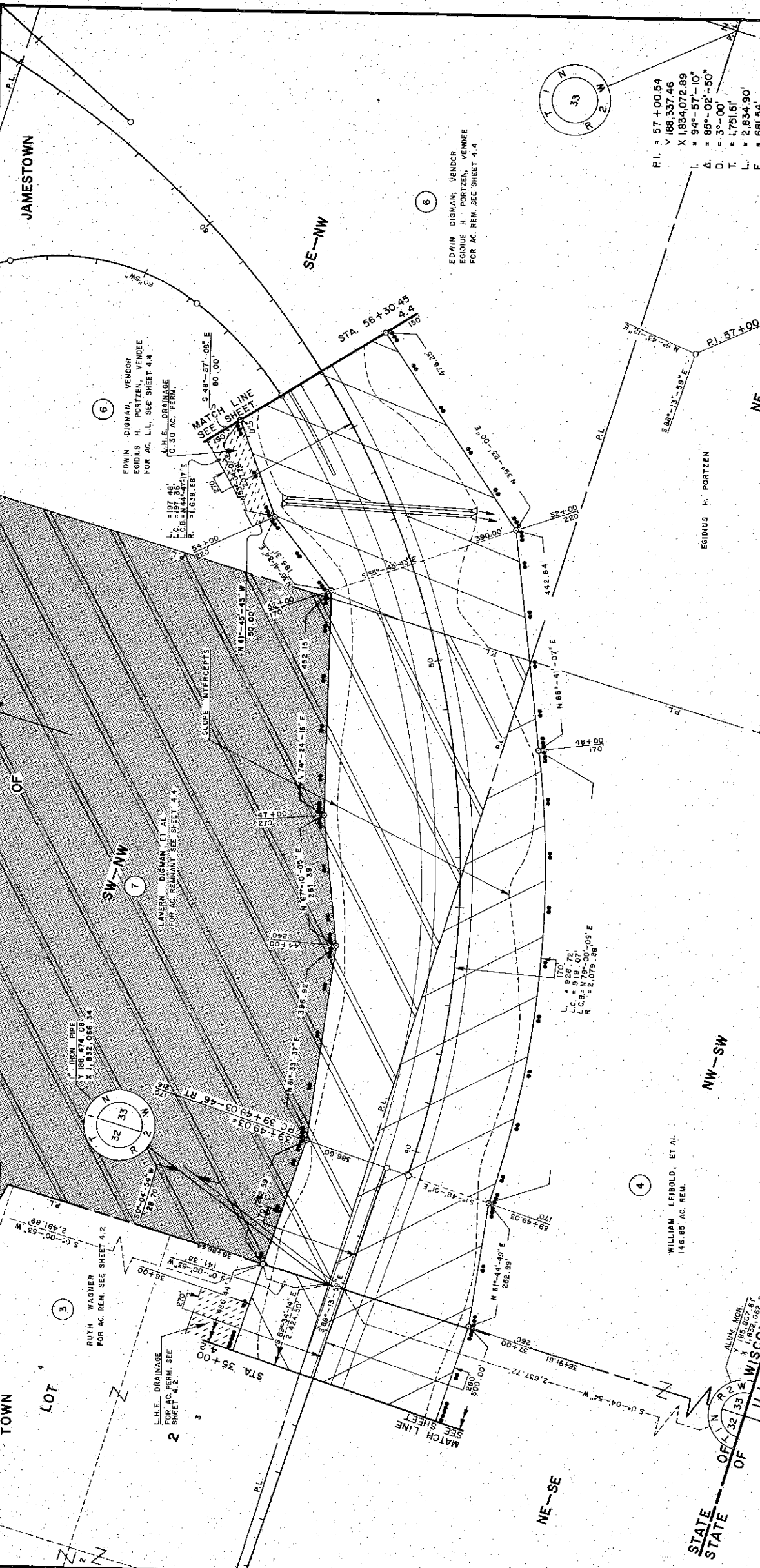
LAVERN DIGMAN, ET AL FOR AC. REM. SEE SHEET 4.4

EDWIN DIGMAN, VENDOR EGIUS H. PORTZEN, VENDEE FOR AC. L.L. SEE SHEET 4.4

L.H.E. DRAINAGE FOR AC. PERM. SEE SHEET 4.2

RUTH WAGNER FOR AC. REM. SEE SHEET 4.2

RELEASED TO CORPORATION



PI. = 57+00.54
 Y 186,337.46
 X 1834,072.89
 A. = 94°-57'-10"
 D. = 85°-02'-50"
 T. = 3°-00"
 L. = 1,751.51'
 E. = 2,834.90'
 R. = 681.54'
 R. = 1,909.86'

EDWIN DIGMAN, VENDOR
 EGIUS H. PORTZEN, VENDEE
 FOR AC. REM. SEE SHEET 4.4

WILLIAM LIEBOLD, ET AL
 146.85 AC. REM.

