

COMMISSIONERS

JERRY DONOHUE, CHAIRMAN
FRED J. SEGUIN, VICE-CHAIRMAN
K. G. KURTENACKER, SECRETARY

W. C. BUETOW
STATE HIGHWAY ENGINEER



WISCONSIN HIGHWAY
STATE CAPITOL

MADISON

ENGINEER
ENGINEER
ENGINEER
ENGINEER
ENGINEER

WHAT IS NOW:
CTH 'HHH' THRU LIELER

Mr. J. T. Webb, County Clerk,
Grant County,
Lancaster, Wisconsin

Mr. A. W. DiVall, Chairman
Grant County Highway Committee,
Fennimore, Wisconsin

Gentlemen:

SUBJECT: Federal Aid Project No. 451-B
Dubuque-Platteville Road
U. S. Highway No. 61
Grant County
Relocation Order

It having been deemed necessary for the proper improvement of a state trunk highway to relocate or widen a portion thereof, a plat showing the old and the new locations and a copy of the order of the State Highway Commission are hereby filed with each of you, as required by law.

Very truly yours,

WISCONSIN HIGHWAY COMMISSION,

By

K. G. Kurtenacker
K. G. Kurtenacker,
Secretary.

KGK: AP
cc-DE#9
Henry Mink, Lancaster
W.B.B.

STATE HIGHWAY COMMISSION

STATE OF WISCONSIN

FEDERAL AID PROJECT NO. 451-B
DUBUQUE-PLATTEVILLE ROAD
U. S. HIGHWAY NO. 61
GRANT COUNTY
RELOCATION ORDER

A resolution was presented to the Commission by the Secretary as follows:

Due to the proposed construction of the above named project which extends along a state trunk highway known as U. S. Highway No. 61, as located in the state trunk highway layout of 1923, or subsequently located in accordance with the Statutes, from a point 960 feet south and 370 feet east of the north one-quarter (1/4) corner of Section 21, Township 1 North, Range 2 West, thence northerly, easterly and northerly to a point 555 feet east and 190 feet north of the south one-quarter (1/4) corner of Section 22, Township 2 North, Range 2 West, it becomes necessary for the proper construction and improvement of U. S. Highway No. 61 to make certain relocations and to secure certain additional right of way. A plat of the said relocations and of the right of way to be acquired, marked "Plat of Right of Way Required, Federal Aid Project No. 451-B, Dubuque-Platteville Road, U. S. H. No. 61, Grant County", was presented, the same being sheets Nos. 3 and 3A of the plans for said Federal Aid Project No. 451-B.

THEREFORE, BE IT FOUND AND DETERMINED that the alignment shown on the plat marked "Plat of Right of Way Required, Federal Aid Project No. 451-B, Dubuque-Platteville Road, U. S. H. No. 61, Grant County" be approved; that the state trunk highway be and hereby is changed and relocated in accordance with said plat by authority granted the Commission under Section 83.08 of the Statutes; that the relocations shown thereon be ordered; that the state trunk highway as laid out by the Legislative Committee and the Highway Commission in 1923, or as subsequently located, between the limits shown on said plat, be and hereby is discontinued; that said state trunk highway be officially located as shown on the attached plat; that it be determined that necessity exists for the acquirement of the right of way shown on said plat; that the State Highway Engineer be directed to order the construction of said Federal Aid Project No. 451-B along the alignment shown on the said plat and to secure the right of way necessary for such construction in the manner provided by law for the acquirement of right of way in such cases. All previous actions of the Commission or other authority which conflict herewith are hereby rescinded.

It was moved and seconded that the resolution be adopted. Carried.

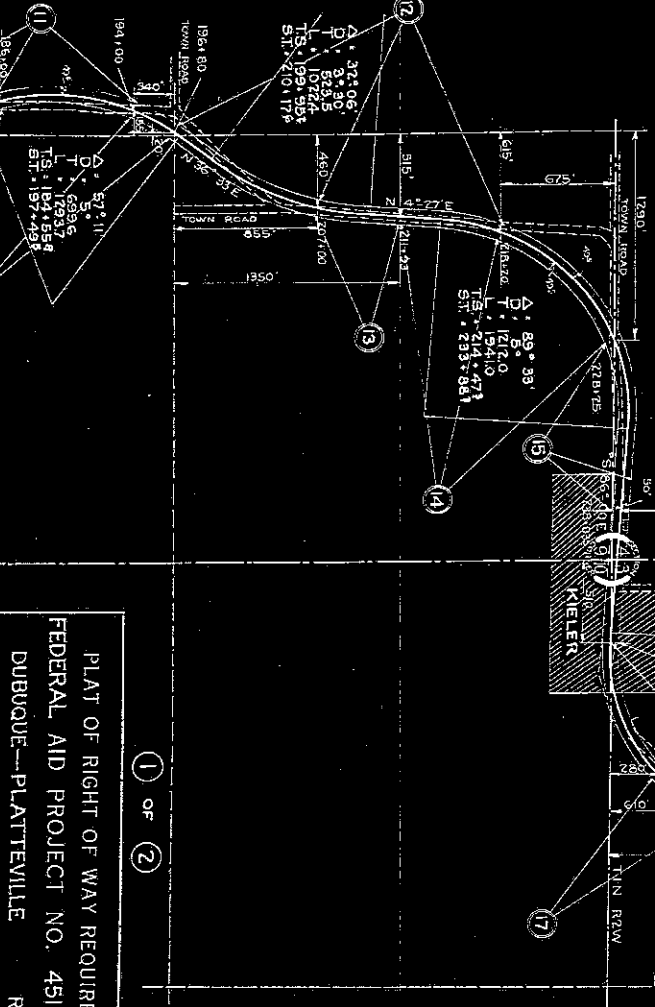
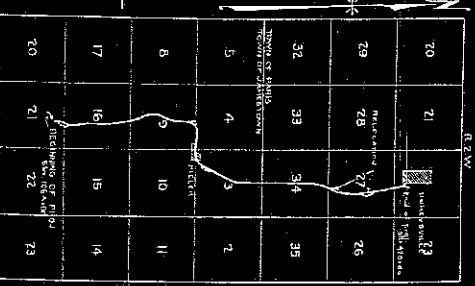
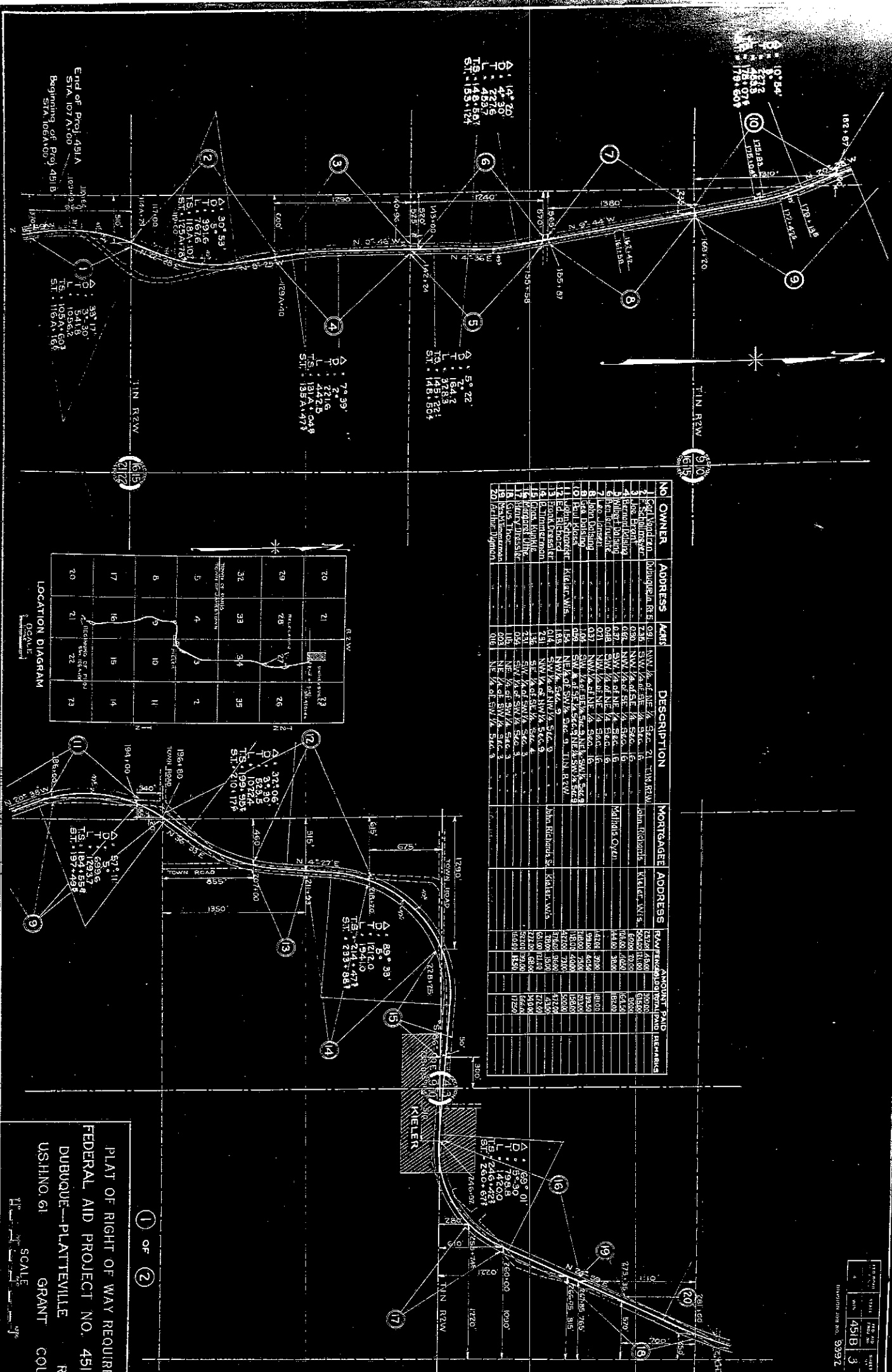
The Secretary of the State Highway Commission does hereby certify that the foregoing is a correct copy of the order of the said Commission in the said matter made at its meeting held January 16, 1931, and that the attached plat is a correct copy of the plat named in the order.

Copies of the said order and plat are hereby filed with the County Clerk and with the County Highway Committee of Grant County, in order that the said Committee may deal by contract with the owners of the land required for and of the premises to be affected by such change and make provision for such change within thirty days, as required by law.

STATE HIGHWAY COMMISSION OF WISCONSIN,

By K. G. Kurtenacker
K. G. Kurtenacker,
Secretary.

NO.	OWNER	ADDRESS	ACRES	DESCRIPTION	MORTGAGEE	ADDRESS	AMOUNT PAID	REMARKS
1	Pat Vandenberg	Bohannon Rd E	0.91	NW 1/4 of NE 1/4 Sec 21 T1N R2W			2500	
2	John Brown		0.30	NW 1/4 of SE 1/4 S40	John Brown	Kiefer, Wis.	2000	
3	Walter Dooling		0.64	NW 1/4 of SE 1/4 S40			64.60	
4	Walter Dooling		0.64	NW 1/4 of NE 1/4 S40	Malinda Ozyan		64.60	
5	John Dooling		0.32	NW 1/4 of NE 1/4 S40			64.60	
6	John Dooling		0.32	NW 1/4 of NE 1/4 S40			64.60	
7	John Dooling		0.32	NW 1/4 of NE 1/4 S40			64.60	
8	John Dooling		0.32	NW 1/4 of NE 1/4 S40			64.60	
9	John Dooling		0.32	NW 1/4 of NE 1/4 S40			64.60	
10	John Dooling		0.32	NW 1/4 of NE 1/4 S40			64.60	
11	John Dooling		0.32	NW 1/4 of NE 1/4 S40			64.60	
12	John Dooling		0.32	NW 1/4 of NE 1/4 S40			64.60	
13	John Dooling		0.32	NW 1/4 of NE 1/4 S40			64.60	
14	John Dooling		0.32	NW 1/4 of NE 1/4 S40			64.60	
15	John Dooling		0.32	NW 1/4 of NE 1/4 S40			64.60	
16	John Dooling		0.32	NW 1/4 of NE 1/4 S40			64.60	
17	John Dooling		0.32	NW 1/4 of NE 1/4 S40			64.60	
18	John Dooling		0.32	NW 1/4 of NE 1/4 S40			64.60	
19	John Dooling		0.32	NW 1/4 of NE 1/4 S40			64.60	
20	John Dooling		0.32	NW 1/4 of NE 1/4 S40			64.60	



PLAT OF RIGHT OF WAY REQUIRED
 FEDERAL AID PROJECT NO. 451B
 DUBUQUE--PLATTEVILLE ROAD
 US.H.NO. 61 GRANT COUNTY

1 OF 2
 SCALE

End of Proj. 451A
 STA. 107+00
 Beginning of Proj. 451B
 STA. 106+00

Δ: 14° 20'
 T: 4376
 L: 188.59
 S.I.: 133.124

Δ: 7° 59'
 T: 2716
 L: 442.5
 S.I.: 135A+048

Δ: 5° 22'
 T: 1643
 L: 278.3
 S.I.: 143.554

Δ: 10° 54'
 T: 4503
 L: 178.076
 S.I.: 178+603

Δ: 30° 59'
 T: 3916
 L: 767.6
 S.I.: 118A+107

Δ: 33° 17'
 T: 5416
 L: 1059.603
 S.I.: 116A+166

Δ: 32° 05'
 T: 5135
 L: 1027.6
 S.I.: 101+179

Δ: 89° 38'
 T: 1212.0
 L: 154.10
 S.I.: 233+841

Δ: 56° 30'
 T: 1420.0
 L: 246.673
 S.I.: 260+673

SECTION 27
10N R2W
TOWNSHIP 10N
RANGE 2W

SECTION 24
10N R2W
TOWNSHIP 10N
RANGE 2W

Δ: 259°41'
D: 77°30'
L: 8951
TS: 4771629
ST: 7594759

Δ: 48°56'
D: 48'
L: 63571
TS: 3457148
ST: 3981805

NO	OWNER	ADDRESS	ACRS	DESCRIPTION	MORTGAGE	ADDRESS	AMOUNT PAID	REMARKS
1	W. J. KIRBY	1000 N. 1st St.	0.14	NE 1/4 of NW 1/4, Sec. 2			1500	
2	W. J. KIRBY	1000 N. 1st St.	0.14	SE 1/4 of NW 1/4, SW 1/4 of NE 1/4, Sec. 2			1500	
3	W. J. KIRBY	1000 N. 1st St.	0.14	SW 1/4 of NW 1/4, SW 1/4 of NE 1/4, Sec. 2			1500	
4	W. J. KIRBY	1000 N. 1st St.	0.14	NE 1/4 of NW 1/4, SW 1/4 of NE 1/4, Sec. 2			1500	
5	W. J. KIRBY	1000 N. 1st St.	0.14	SW 1/4 of NW 1/4, SW 1/4 of NE 1/4, Sec. 2			1500	
6	W. J. KIRBY	1000 N. 1st St.	0.14	NE 1/4 of NW 1/4, SW 1/4 of NE 1/4, Sec. 2			1500	
7	W. J. KIRBY	1000 N. 1st St.	0.14	SW 1/4 of NW 1/4, SW 1/4 of NE 1/4, Sec. 2			1500	
8	W. J. KIRBY	1000 N. 1st St.	0.14	NE 1/4 of NW 1/4, SW 1/4 of NE 1/4, Sec. 2			1500	
9	W. J. KIRBY	1000 N. 1st St.	0.14	SW 1/4 of NW 1/4, SW 1/4 of NE 1/4, Sec. 2			1500	
10	W. J. KIRBY	1000 N. 1st St.	0.14	NE 1/4 of NW 1/4, SW 1/4 of NE 1/4, Sec. 2			1500	
11	W. J. KIRBY	1000 N. 1st St.	0.14	SW 1/4 of NW 1/4, SW 1/4 of NE 1/4, Sec. 2			1500	
12	W. J. KIRBY	1000 N. 1st St.	0.14	NE 1/4 of NW 1/4, SW 1/4 of NE 1/4, Sec. 2			1500	
13	W. J. KIRBY	1000 N. 1st St.	0.14	SW 1/4 of NW 1/4, SW 1/4 of NE 1/4, Sec. 2			1500	
14	W. J. KIRBY	1000 N. 1st St.	0.14	NE 1/4 of NW 1/4, SW 1/4 of NE 1/4, Sec. 2			1500	
15	W. J. KIRBY	1000 N. 1st St.	0.14	SW 1/4 of NW 1/4, SW 1/4 of NE 1/4, Sec. 2			1500	
16	W. J. KIRBY	1000 N. 1st St.	0.14	NE 1/4 of NW 1/4, SW 1/4 of NE 1/4, Sec. 2			1500	
17	W. J. KIRBY	1000 N. 1st St.	0.14	SW 1/4 of NW 1/4, SW 1/4 of NE 1/4, Sec. 2			1500	
18	W. J. KIRBY	1000 N. 1st St.	0.14	NE 1/4 of NW 1/4, SW 1/4 of NE 1/4, Sec. 2			1500	
19	W. J. KIRBY	1000 N. 1st St.	0.14	SW 1/4 of NW 1/4, SW 1/4 of NE 1/4, Sec. 2			1500	
20	W. J. KIRBY	1000 N. 1st St.	0.14	NE 1/4 of NW 1/4, SW 1/4 of NE 1/4, Sec. 2			1500	
21	W. J. KIRBY	1000 N. 1st St.	0.14	SW 1/4 of NW 1/4, SW 1/4 of NE 1/4, Sec. 2			1500	
22	W. J. KIRBY	1000 N. 1st St.	0.14	NE 1/4 of NW 1/4, SW 1/4 of NE 1/4, Sec. 2			1500	
23	W. J. KIRBY	1000 N. 1st St.	0.14	SW 1/4 of NW 1/4, SW 1/4 of NE 1/4, Sec. 2			1500	
24	W. J. KIRBY	1000 N. 1st St.	0.14	NE 1/4 of NW 1/4, SW 1/4 of NE 1/4, Sec. 2			1500	
25	W. J. KIRBY	1000 N. 1st St.	0.14	SW 1/4 of NW 1/4, SW 1/4 of NE 1/4, Sec. 2			1500	
26	W. J. KIRBY	1000 N. 1st St.	0.14	NE 1/4 of NW 1/4, SW 1/4 of NE 1/4, Sec. 2			1500	
27	W. J. KIRBY	1000 N. 1st St.	0.14	SW 1/4 of NW 1/4, SW 1/4 of NE 1/4, Sec. 2			1500	
28	W. J. KIRBY	1000 N. 1st St.	0.14	NE 1/4 of NW 1/4, SW 1/4 of NE 1/4, Sec. 2			1500	
29	W. J. KIRBY	1000 N. 1st St.	0.14	SW 1/4 of NW 1/4, SW 1/4 of NE 1/4, Sec. 2			1500	
30	W. J. KIRBY	1000 N. 1st St.	0.14	NE 1/4 of NW 1/4, SW 1/4 of NE 1/4, Sec. 2			1500	
31	W. J. KIRBY	1000 N. 1st St.	0.14	SW 1/4 of NW 1/4, SW 1/4 of NE 1/4, Sec. 2			1500	
32	W. J. KIRBY	1000 N. 1st St.	0.14	NE 1/4 of NW 1/4, SW 1/4 of NE 1/4, Sec. 2			1500	
33	W. J. KIRBY	1000 N. 1st St.	0.14	SW 1/4 of NW 1/4, SW 1/4 of NE 1/4, Sec. 2			1500	
34	W. J. KIRBY	1000 N. 1st St.	0.14	NE 1/4 of NW 1/4, SW 1/4 of NE 1/4, Sec. 2			1500	
35	W. J. KIRBY	1000 N. 1st St.	0.14	SW 1/4 of NW 1/4, SW 1/4 of NE 1/4, Sec. 2			1500	
36	W. J. KIRBY	1000 N. 1st St.	0.14	NE 1/4 of NW 1/4, SW 1/4 of NE 1/4, Sec. 2			1500	
37	W. J. KIRBY	1000 N. 1st St.	0.14	SW 1/4 of NW 1/4, SW 1/4 of NE 1/4, Sec. 2			1500	
38	W. J. KIRBY	1000 N. 1st St.	0.14	NE 1/4 of NW 1/4, SW 1/4 of NE 1/4, Sec. 2			1500	
39	W. J. KIRBY	1000 N. 1st St.	0.14	SW 1/4 of NW 1/4, SW 1/4 of NE 1/4, Sec. 2			1500	
40	W. J. KIRBY	1000 N. 1st St.	0.14	NE 1/4 of NW 1/4, SW 1/4 of NE 1/4, Sec. 2			1500	

DICKESVILLE

End of Project - Sta. 420+00

SECTION	4	4	4	4
SCALE	1" = 40'	1" = 40'	1" = 40'	1" = 40'
DATE	4/18/80	4/18/80	4/18/80	4/18/80
BY	3/8	3/8	3/8	3/8
PROJECT NO.	5392	5392	5392	5392

PLAT OF RIGHT OF WAY REQUIRED
FEDERAL AID PROJECT NO. 451-B
DUBUQUE—PLATTEVILLE ROAD
US.H.NO. 61 GRANT COUNTY

2 of 2