



State of Wisconsin \ DEPARTMENT OF TRANSPORTATION



FEB 20 1986

DIVISION OF HIGHWAYS AND
TRANSPORTATION SERVICES

4802 Sheboygan Avenue
P.O. Box 7916
Madison, WI 53707-7916

Mr. Nelson J. Huske, Commissioner
Grant County Highway Department
1011 N. Adams Street
Lancaster, Wisconsin 53813

Ms. Dorothea Eck,
Grant County Clerk
Courthouse
130 West Maple Street
P. O. Box 191
Lancaster, Wisconsin 53813

Dear Mr. Huske & Ms. Eck:

Project 1208-04-21
Dubuque - Dickeyville Road
Maryville Heights - Sandy Cook
U.S.H. 61
Grant County

The Department of Transportation deems it necessary to make certain revisions on a previously approved right of way plat and to acquire certain lands and interests in lands, according to such revisions, for the proper improvement or maintenance of the above-designated project and highway. The revised relocation order of the Department and the map showing the highway as laid out and established and the lands and interests to be acquired are transmitted herewith.

The attached relocation order sets forth the provisions by whom the right of way will be acquired.

Sincerely,

Marvin J. Schaeffer, Deputy
for Marvin J. Schaeffer, P.E.
Administrator

Enc.

CC: Trans. Dist. 1
Real Estate

GRANT COUNTY RECORDS

FEB 27 1986

RELOCATION ORDER

R-0-572

State of Wisconsin/Department of Transportation
DIVISION OF HIGHWAYS AND TRANSPORTATION SERVICES

PROJECT	NAME OF ROAD	HIGHWAY	COUNTY
1208-04-21	Dubuque - Dickeyville Road Maryville Heights - Sandy Hook U.S.H. 61,	U.S.H. 61	Grant
RIGHT OF WAY PLAT DATE	PLAT SHEET NUMBERS	DATE OF PREVIOUS ORDER	
January 29, 1986	4.0 - 4.5	January 30, 1986	

Description of Termini of Project

From a point 313.45 feet north of and 2,588.98 feet east of the west quarter corner of Section 28, Township 1 North, Range 2 West, thence northerly to a point 8.88 feet south of and 884.81 feet east of the north quarter corner of Section 21, Township 1 North, Range 2 West.

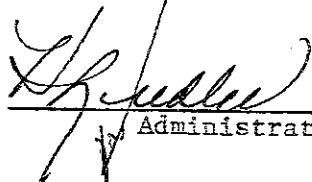
To properly establish, lay out, widen, enlarge, extend, construct, reconstruct, improve, or maintain a portion of the highway designated above, it is necessary to relocate or change and acquire certain lands or interests in lands as shown on the right of way plat for the above project.

To effect this change, pursuant to authority granted under Sections 84.02(3) and 84.09, Wisconsin Statutes, the Department of Transportation hereby orders that:

1. The said highway is hereby laid out and established to the lines and widths as shown on the plat.
2. The required lands or interests in lands as shown on the plat shall be acquired by the Division of Highways and Transportation Services, in the name of the State of Wisconsin, pursuant to the provisions of Section 84.09(1) or (2), Wisconsin Statutes.
3. This order supersedes and amends any previous order issued by the Department.

FEB 20 1986

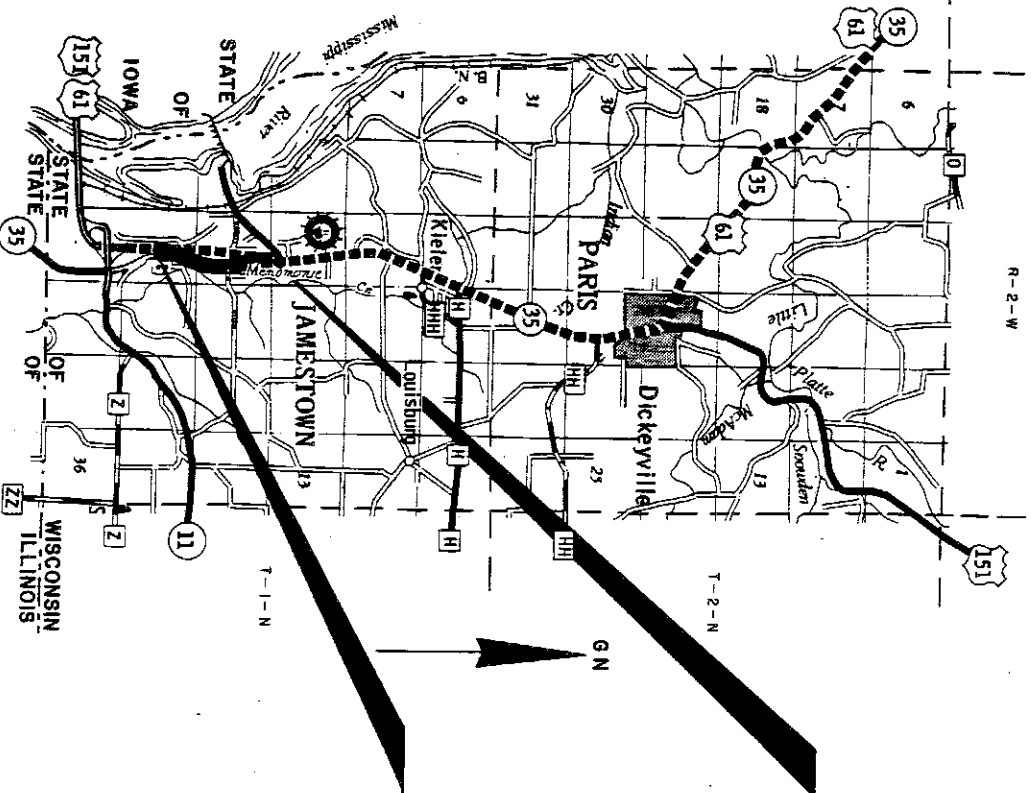
Date


Administrator Deputy

Conventional Signs and Abbreviations

STATE LINE	-----	SECTION CORNER	SECTION	CEMETERY	FOUNDATION OR RUINS	IRON PIN	POWER POLE	TELEPHONE POLE	VALVE	TRANSMISSION TOWER	UNDERGROUND CABLE MARKER	R/W POINT	R/W MONUMENT	WINDMILL	SIGN	SILV. MANHOLE WELL, VENT, SEPTIC TANK, ETC.	TREES (DECIDUOUS)	TREES (CONIFEROUS)
COUNTY LINE	-----	NOTATION FOR COMBUSTIBLE FLUIDS	RAIL LINE	LAKE	NO ACCESS BY STATUTORY AUTHORITY	BRIDGE	STREAM OR RIVER	SLAKE	CHANNEL CHANGE	PIPE OR CATTLE	CHANNEL CHANGE	NO ACCESS BY PREVIOUS PROJECT	NO ACCESS (BY STATUTORY AUTHORITY)	NO ACCESS (BY PREVIOUS PROJECT)	NO ACCESS (BY STATUTORY AUTHORITY)	NO ACCESS (BY PREVIOUS PROJECT)	NO ACCESS (BY STATUTORY AUTHORITY)	NO ACCESS (BY PREVIOUS PROJECT)
TOWNSHIP AND RANGE LINES	-----	BRIDGE	RAIL LINE	LAKE	NO ACCESS BY STATUTORY AUTHORITY	BRIDGE	STREAM OR RIVER	SLAKE	CHANNEL CHANGE	PIPE OR CATTLE	CHANNEL CHANGE	NO ACCESS BY PREVIOUS PROJECT	NO ACCESS (BY STATUTORY AUTHORITY)	NO ACCESS (BY PREVIOUS PROJECT)	NO ACCESS (BY STATUTORY AUTHORITY)	NO ACCESS (BY PREVIOUS PROJECT)	NO ACCESS (BY STATUTORY AUTHORITY)	NO ACCESS (BY PREVIOUS PROJECT)
SECTION LINE	-----	BRIDGE	RAIL LINE	LAKE	NO ACCESS BY STATUTORY AUTHORITY	BRIDGE	STREAM OR RIVER	SLAKE	CHANNEL CHANGE	PIPE OR CATTLE	CHANNEL CHANGE	NO ACCESS BY PREVIOUS PROJECT	NO ACCESS (BY STATUTORY AUTHORITY)	NO ACCESS (BY PREVIOUS PROJECT)	NO ACCESS (BY STATUTORY AUTHORITY)	NO ACCESS (BY PREVIOUS PROJECT)	NO ACCESS (BY STATUTORY AUTHORITY)	NO ACCESS (BY PREVIOUS PROJECT)
QUARTER LINE	-----	BRIDGE	RAIL LINE	LAKE	NO ACCESS BY STATUTORY AUTHORITY	BRIDGE	STREAM OR RIVER	SLAKE	CHANNEL CHANGE	PIPE OR CATTLE	CHANNEL CHANGE	NO ACCESS BY PREVIOUS PROJECT	NO ACCESS (BY STATUTORY AUTHORITY)	NO ACCESS (BY PREVIOUS PROJECT)	NO ACCESS (BY STATUTORY AUTHORITY)	NO ACCESS (BY PREVIOUS PROJECT)	NO ACCESS (BY STATUTORY AUTHORITY)	NO ACCESS (BY PREVIOUS PROJECT)
SIXTEENTH LINE	-----	BRIDGE	RAIL LINE	LAKE	NO ACCESS BY STATUTORY AUTHORITY	BRIDGE	STREAM OR RIVER	SLAKE	CHANNEL CHANGE	PIPE OR CATTLE	CHANNEL CHANGE	NO ACCESS BY PREVIOUS PROJECT	NO ACCESS (BY STATUTORY AUTHORITY)	NO ACCESS (BY PREVIOUS PROJECT)	NO ACCESS (BY STATUTORY AUTHORITY)	NO ACCESS (BY PREVIOUS PROJECT)	NO ACCESS (BY STATUTORY AUTHORITY)	NO ACCESS (BY PREVIOUS PROJECT)
NEW CENTERLINE	-----	BRIDGE	RAIL LINE	LAKE	NO ACCESS BY STATUTORY AUTHORITY	BRIDGE	STREAM OR RIVER	SLAKE	CHANNEL CHANGE	PIPE OR CATTLE	CHANNEL CHANGE	NO ACCESS BY PREVIOUS PROJECT	NO ACCESS (BY STATUTORY AUTHORITY)	NO ACCESS (BY PREVIOUS PROJECT)	NO ACCESS (BY STATUTORY AUTHORITY)	NO ACCESS (BY PREVIOUS PROJECT)	NO ACCESS (BY STATUTORY AUTHORITY)	NO ACCESS (BY PREVIOUS PROJECT)
NEW R/W LINE	-----	BRIDGE	RAIL LINE	LAKE	NO ACCESS BY STATUTORY AUTHORITY	BRIDGE	STREAM OR RIVER	SLAKE	CHANNEL CHANGE	PIPE OR CATTLE	CHANNEL CHANGE	NO ACCESS BY PREVIOUS PROJECT	NO ACCESS (BY STATUTORY AUTHORITY)	NO ACCESS (BY PREVIOUS PROJECT)	NO ACCESS (BY STATUTORY AUTHORITY)	NO ACCESS (BY PREVIOUS PROJECT)	NO ACCESS (BY STATUTORY AUTHORITY)	NO ACCESS (BY PREVIOUS PROJECT)
EXISTING R/W LINE	-----	BRIDGE	RAIL LINE	LAKE	NO ACCESS BY STATUTORY AUTHORITY	BRIDGE	STREAM OR RIVER	SLAKE	CHANNEL CHANGE	PIPE OR CATTLE	CHANNEL CHANGE	NO ACCESS BY PREVIOUS PROJECT	NO ACCESS (BY STATUTORY AUTHORITY)	NO ACCESS (BY PREVIOUS PROJECT)	NO ACCESS (BY STATUTORY AUTHORITY)	NO ACCESS (BY PREVIOUS PROJECT)	NO ACCESS (BY STATUTORY AUTHORITY)	NO ACCESS (BY PREVIOUS PROJECT)
PROPERTY LINE	-----	BRIDGE	RAIL LINE	LAKE	NO ACCESS BY STATUTORY AUTHORITY	BRIDGE	STREAM OR RIVER	SLAKE	CHANNEL CHANGE	PIPE OR CATTLE	CHANNEL CHANGE	NO ACCESS BY PREVIOUS PROJECT	NO ACCESS (BY STATUTORY AUTHORITY)	NO ACCESS (BY PREVIOUS PROJECT)	NO ACCESS (BY STATUTORY AUTHORITY)	NO ACCESS (BY PREVIOUS PROJECT)	NO ACCESS (BY STATUTORY AUTHORITY)	NO ACCESS (BY PREVIOUS PROJECT)
CORPORATE LIMITS	-----	BRIDGE	RAIL LINE	LAKE	NO ACCESS BY STATUTORY AUTHORITY	BRIDGE	STREAM OR RIVER	SLAKE	CHANNEL CHANGE	PIPE OR CATTLE	CHANNEL CHANGE	NO ACCESS BY PREVIOUS PROJECT	NO ACCESS (BY STATUTORY AUTHORITY)	NO ACCESS (BY PREVIOUS PROJECT)	NO ACCESS (BY STATUTORY AUTHORITY)	NO ACCESS (BY PREVIOUS PROJECT)	NO ACCESS (BY STATUTORY AUTHORITY)	NO ACCESS (BY PREVIOUS PROJECT)
SLOPE INTERCEPTS	-----	BRIDGE	RAIL LINE	LAKE	NO ACCESS BY STATUTORY AUTHORITY	BRIDGE	STREAM OR RIVER	SLAKE	CHANNEL CHANGE	PIPE OR CATTLE	CHANNEL CHANGE	NO ACCESS BY PREVIOUS PROJECT	NO ACCESS (BY STATUTORY AUTHORITY)	NO ACCESS (BY PREVIOUS PROJECT)	NO ACCESS (BY STATUTORY AUTHORITY)	NO ACCESS (BY PREVIOUS PROJECT)	NO ACCESS (BY STATUTORY AUTHORITY)	NO ACCESS (BY PREVIOUS PROJECT)
LOT, III AND OTHER MINOR DASHED LINES	-----	BRIDGE	RAIL LINE	LAKE	NO ACCESS BY STATUTORY AUTHORITY	BRIDGE	STREAM OR RIVER	SLAKE	CHANNEL CHANGE	PIPE OR CATTLE	CHANNEL CHANGE	NO ACCESS BY PREVIOUS PROJECT	NO ACCESS (BY STATUTORY AUTHORITY)	NO ACCESS (BY PREVIOUS PROJECT)	NO ACCESS (BY STATUTORY AUTHORITY)	NO ACCESS (BY PREVIOUS PROJECT)	NO ACCESS (BY STATUTORY AUTHORITY)	NO ACCESS (BY PREVIOUS PROJECT)
UNDERGROUND FACILITY (GAS, TELEPHONE, ELECTRIC, ETC.)	-----	BRIDGE	RAIL LINE	LAKE	NO ACCESS BY STATUTORY AUTHORITY	BRIDGE	STREAM OR RIVER	SLAKE	CHANNEL CHANGE	PIPE OR CATTLE	CHANNEL CHANGE	NO ACCESS BY PREVIOUS PROJECT	NO ACCESS (BY STATUTORY AUTHORITY)	NO ACCESS (BY PREVIOUS PROJECT)	NO ACCESS (BY STATUTORY AUTHORITY)	NO ACCESS (BY PREVIOUS PROJECT)	NO ACCESS (BY STATUTORY AUTHORITY)	NO ACCESS (BY PREVIOUS PROJECT)
NO ACCESS (BY ACQUISITION)	-----	BRIDGE	RAIL LINE	LAKE	NO ACCESS BY STATUTORY AUTHORITY	BRIDGE	STREAM OR RIVER	SLAKE	CHANNEL CHANGE	PIPE OR CATTLE	CHANNEL CHANGE	NO ACCESS BY PREVIOUS PROJECT	NO ACCESS (BY STATUTORY AUTHORITY)	NO ACCESS (BY PREVIOUS PROJECT)	NO ACCESS (BY STATUTORY AUTHORITY)	NO ACCESS (BY PREVIOUS PROJECT)	NO ACCESS (BY STATUTORY AUTHORITY)	NO ACCESS (BY PREVIOUS PROJECT)
LIMITED HIGHWAY EASEMENT	-----	BRIDGE	RAIL LINE	LAKE	NO ACCESS BY STATUTORY AUTHORITY	BRIDGE	STREAM OR RIVER	SLAKE	CHANNEL CHANGE	PIPE OR CATTLE	CHANNEL CHANGE	NO ACCESS BY PREVIOUS PROJECT	NO ACCESS (BY STATUTORY AUTHORITY)	NO ACCESS (BY PREVIOUS PROJECT)	NO ACCESS (BY STATUTORY AUTHORITY)	NO ACCESS (BY PREVIOUS PROJECT)	NO ACCESS (BY STATUTORY AUTHORITY)	NO ACCESS (BY PREVIOUS PROJECT)
BEAM GUARD	-----	BRIDGE	RAIL LINE	LAKE	NO ACCESS BY STATUTORY AUTHORITY	BRIDGE	STREAM OR RIVER	SLAKE	CHANNEL CHANGE	PIPE OR CATTLE	CHANNEL CHANGE	NO ACCESS BY PREVIOUS PROJECT	NO ACCESS (BY STATUTORY AUTHORITY)	NO ACCESS (BY PREVIOUS PROJECT)	NO ACCESS (BY STATUTORY AUTHORITY)	NO ACCESS (BY PREVIOUS PROJECT)	NO ACCESS (BY STATUTORY AUTHORITY)	NO ACCESS (BY PREVIOUS PROJECT)
FENCE	-----	BRIDGE	RAIL LINE	LAKE	NO ACCESS BY STATUTORY AUTHORITY	BRIDGE	STREAM OR RIVER	SLAKE	CHANNEL CHANGE	PIPE OR CATTLE	CHANNEL CHANGE	NO ACCESS BY PREVIOUS PROJECT	NO ACCESS (BY STATUTORY AUTHORITY)	NO ACCESS (BY PREVIOUS PROJECT)	NO ACCESS (BY STATUTORY AUTHORITY)	NO ACCESS (BY PREVIOUS PROJECT)	NO ACCESS (BY STATUTORY AUTHORITY)	NO ACCESS (BY PREVIOUS PROJECT)

ACRES	AC.
ALUMINUM	ALUM.
BARN	B.
BLOCK	BK.
BUSINESS	BUS.
CORNER	COR.
GARAGE	G.
HOUSE	H.
LIMITED HIGHWAY EASEMENT	L.H.E.
MONUMENT	MON.
PAGE	P.
PROPERTY LINE	P.L.
RESTRICTED DEVELOPMENT EASEMENT	R.D.E.
SECTION	SEC.
SHED	S.
STATION	STA.
TEMPORARY	TEMP.
VOLUME	VOL.
FOUNDATION	FDN.



END RELOCATION ORDER
 8.88 S. OF AND 894.81' E. OF THE N. 1/4 COR. OF
 SEC. 21, T. 1 N., R. 2 W.

BEGIN RELOCATION ORDER
 315.45' N. OF AND 2,588.98' E. OF THE W. 1/4 COR. OF
 SEC. 28, T. 1 N., R. 2 W.

F/W PROJECT NUMBER	1208 - 04 - 21	SHEET NUMBER	4.0	TOTAL SHEETS	6
FEDERAL PROJECT NUMBER		GRANT COUNTY			
TITLE OF RIGHT OF WAY ACQUIRED FOR 1208-04-00 DUBUQUE - DICKEYVILLE ROAD (MARYVILLE HEIGHTS - SANDY HOOK)					
U.S.H. 61					

REVISION	DATE	BY
1-28-88		
STATE OF WISCONSIN DEPARTMENT OF TRANSPORTATION		
Approved:	Date:	Director, Bureau of Road Plans
	12/17/85	<i>Robert J. W. [Signature]</i>
U.S. DEPARTMENT OF TRANSPORTATION FEDERAL HIGHWAY ADMINISTRATION MICHIGAN DIVISION		
Approved:	Date:	Director, Bureau of Road Plans

NOTES

COORDINATES AND BEARINGS ON THIS PLAN ARE OBTAINED TO THE MISSOURI COORDINATE SYSTEM SOUTH ZONE. ALL PLAT DIMENSIONS ARE GROUND LENGTH AND MAY BE CONVERTED TO GRID LENGTH BY MULTIPLYING THE DISTANCE BY THE GRID FACTOR PROVIDED ON THE DETAIL SHEETS.

RIGHT OF WAY MONUMENTS ARE TYPE 2 AND ARE PLACED PRIOR TO OR AT THE TIME OF LAND TITLE TRANSFER.

RIGHT OF WAY BOUNDARIES ARE OBTAINED WITH COURTESY OF THE PERMITTEE OF THE HIGHWAY LANDS REFERENCED TO THE U.S. PUBLIC LAND SURVEY OR OTHER SURVEYS OF PUBLIC RECORD.

SCHEDULE OF LANDS & INTERESTS REQUIRED

AREAS SHOWN IN THE TOTAL ACRES COLUMN MAY BE APPROXIMATE AND ARE DERIVED FROM TAX ROLLS OR OTHER AVAILABLE SOURCES AND MAY NOT INCLUDE LANDS OF THE OWNER WHICH ARE NOT CONTIGUOUS TO THE AREA TO BE ACQUIRED.

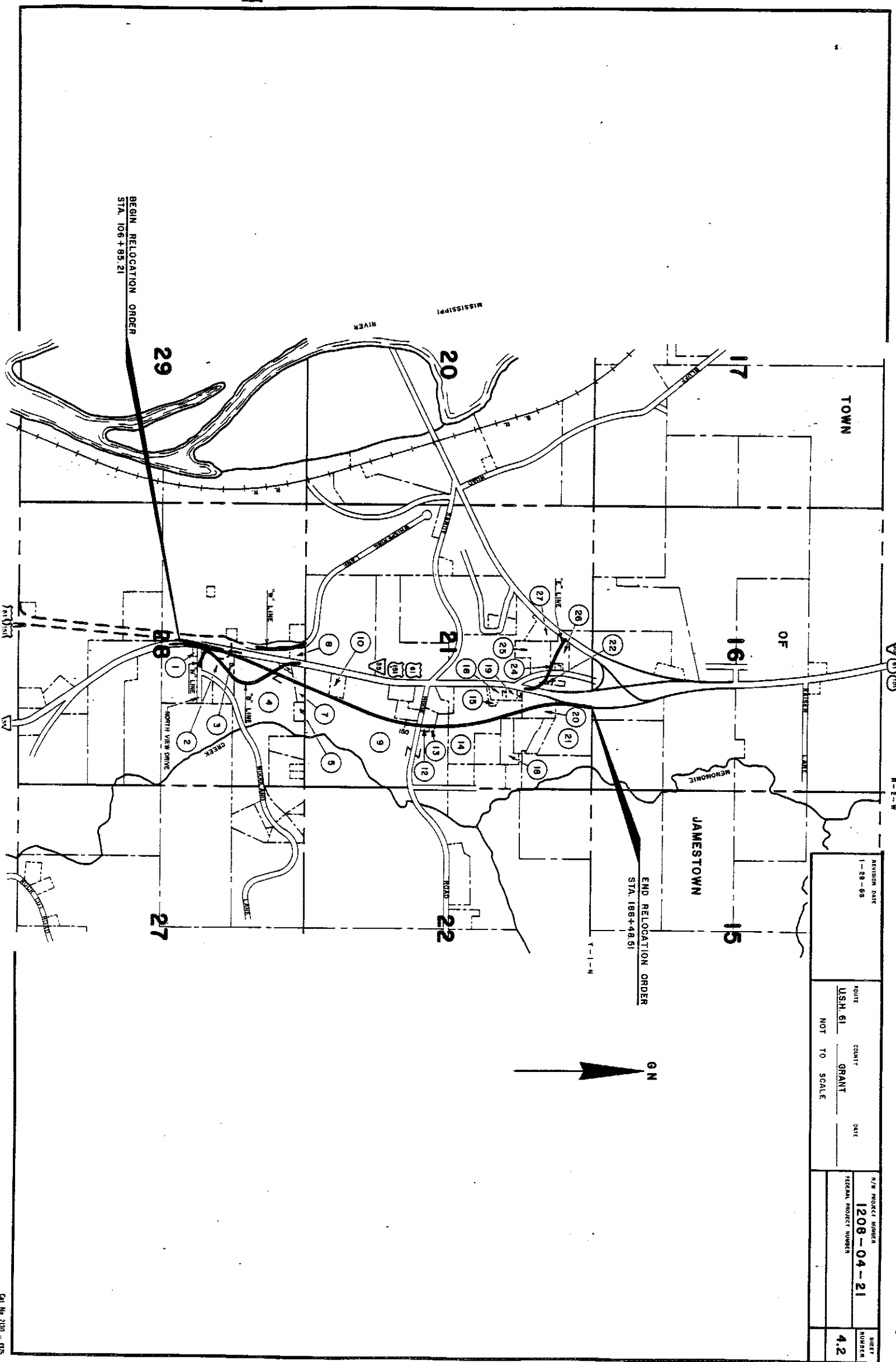
PARCEL NUMBER	SHEET NUMBER	OWNER(S)	INTEREST REQUIRED	TOTAL ACRES OR S.F.	R/W NEW	ACRES OR S.F. EXISTING	TOTAL ACRES	L.H.E. ACRES TEMP.	L.H.E. ACRES PERM.	R.O.E. ACRES
1	4.3	GEORGE & DOROTHY CLIFTON	FEE & ACCESS RIGHTS	0.27	0.02	—	0.25	—	—	—
2	4.3	CYRIL J. DROESLER	FEE & ACCESS RIGHTS	30.39	2.76	—	27.63	—	—	—
3	4.3	MARYVILLE HERITAGE SANITARY DISTRICT #2	FEE & ACCESS RIGHTS	1.41	0.06	—	1.35	—	—	—
4	4.3	THE HOLY FAMILY FOUNDATION	FEE, R.D.E. & ACCESS RIGHTS	30.25	6.30	—	23.95	0.09	—	3.08
5	4.3	LINDA A. DONOVAN	FEE	1.61	—	—	—	—	—	—
6	—	—	—	—	—	—	—	—	—	—
7	4.3	D. ALLEN ARTHUR & DENISE S. JANSEN	FEE, R.D.E. & ACCESS RIGHTS	3.00	1.46	0.35	1.81	—	—	0.61
8	4.3	ROBERT & ALYMA GERLICH	FEE & ACCESS RIGHTS	0.46	0.07	—	0.39	—	—	—
9	4.3 & 4.4	LOWELL T. & AGNES L. KAHLE	FEE, R.D.E. & ACCESS RIGHTS	114.12	21.32	2.11	23.43	0.23	—	0.88
10	4.4	RALPH BRUMHOVER	ACCESS RIGHTS	3.06	0.04	0.35	2.67	—	—	0.10
11	—	—	—	—	—	—	—	—	—	—
12	4.4	LESTER L. & MARIE L. BIESING	FEE & ACCESS RIGHTS	1.89	0.98	0.16	1.14	—	—	0.75
13	4.4	HERBERT J. & CAROL A. LANGE	FEE	0.25	0.25	—	—	—	—	—
14	4.4 & 4.5	CYRILLUS & LORENA LOEFFELHOLZ	FEE & ACCESS RIGHTS	25.35	8.13	—	17.22	—	—	—
15	4.5	JOE-JAM, INC.	ACCESS RIGHTS	0.75	0.01	—	0.74	—	—	—
16	4.5	JAMES & DOROTHY M. DEGERMARDT	FEE & ACCESS RIGHTS	2.60	0.20	—	2.40	—	—	—
17	—	—	—	—	—	—	—	—	—	—
18	4.5	MICHAEL & ANITA ADAMS	FEE & ACCESS RIGHTS	4.82	0.10	—	4.72	—	—	—
19	4.5	ROGER W. & HELEN B. LEIBRIED	FEE & ACCESS RIGHTS	1.00	0.29	—	0.71	—	—	—
20	4.5	DOUGLAS J. JANSEN	FEE & ACCESS RIGHTS	6.25	2.96	—	3.29	0.08	—	—
21	4.5	THOMAS RICHARD	FEE & ACCESS RIGHTS	5.25	0.18	—	5.07	—	—	—
22	4.5	EARL A. & JERRY L. LUDWIG	FEE & ACCESS RIGHTS	3.00	0.08	—	2.92	—	—	—
23	—	—	—	—	—	—	—	—	—	—
24	4.5	DONALD & JILL JANSEN	FEE	0.39	0.12	0.12	0.29	—	—	0.10
25	4.5	FREDERICK SCHULMEYER	FEE	6.45	0.24	0.41	6.65	—	—	5.80
26	4.5	ROBERT J. & HEZEL ENLERS	FEE	4.23	1.35	0.12	2.90	—	—	1.35
27	4.5	DOUGLAS P. & LYNN A. HINDERMAN	FEE	2.20	0.01	0.01	3.19	—	—	—

REVISION DATE
1 - 29 - 85

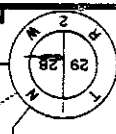
R/W PROJECT NUMBER
1208-04-21

U.S.H. 61 COUNTY GRANT DATE 12/17/85

SHEET NUMBER 4.1



REVISION DATE 1-28-66	ROUTE US 61	COUNTY GRANT	DATE	P/W PROJECT NUMBER 1208-04-21	SHEET NUMBER 4.2
	NOT TO SCALE				



BEGIN RELOCATION ORDER
PROJECT 1208-04-21
 STA. 106+85.21

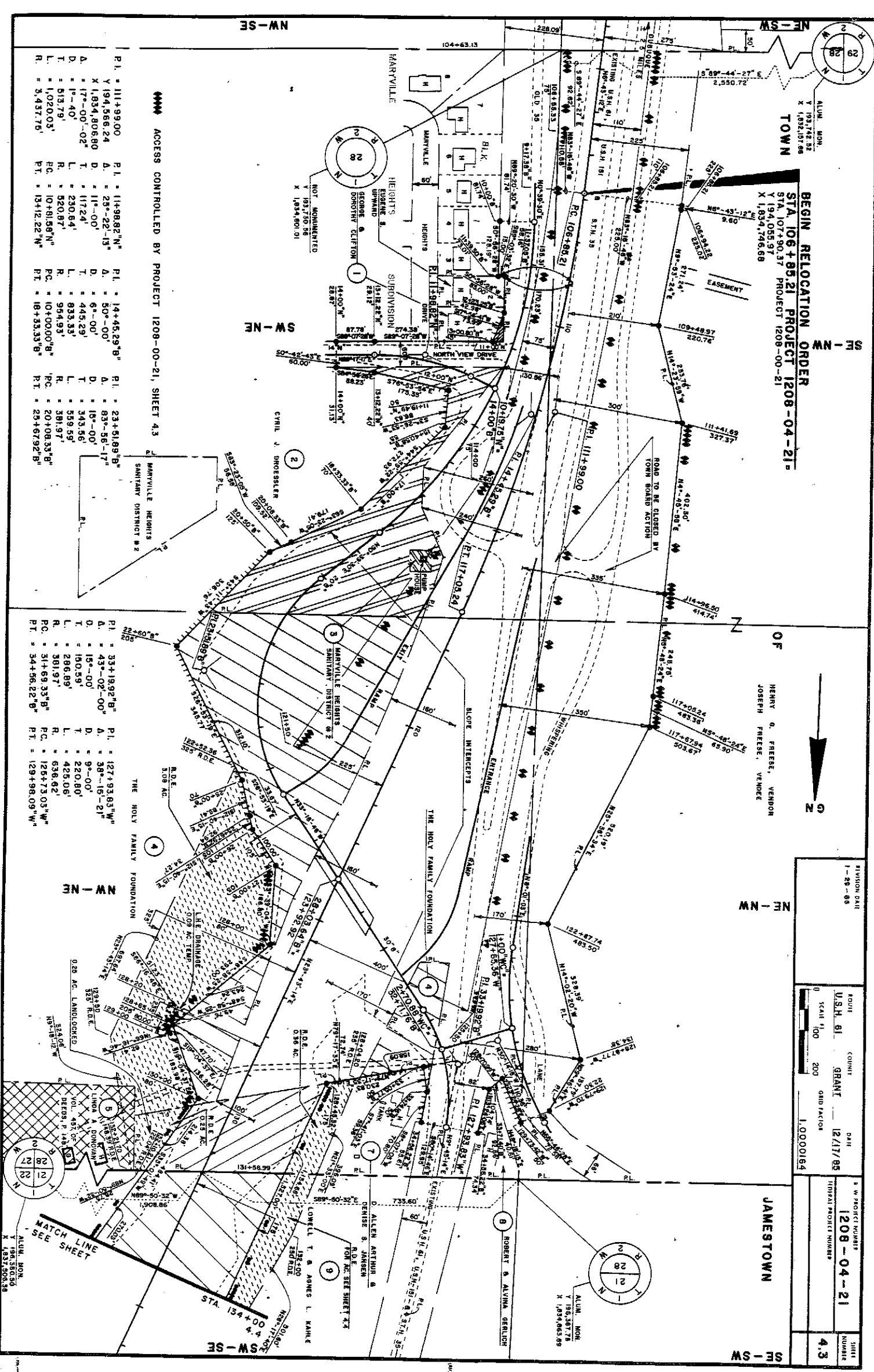
ALUM. MON.
 Y 194,175.52
 X 1,035,175.88
 STA. 107+90.37
 Y 194,055.97
 X 1,034,746.68

OF
 HENRY O. FRESSE, VENDOR
 JOSEPH FRESSE, VENDEE

ROUTE	1-29-88
COUNTY	ALUM. MON.
GRANT	12/17/95
DATE	12/17/95
SCALE	1" = 100'
GRID FACTOR	1.0000164

PROJECT NUMBER	1208-04-21
TEMP. PROJECT NUMBER	
SHEET NUMBER	4.3

JAMESTOWN



***** ACCESS CONTROLLED BY PROJECT 1208-00-21, SHEET 4.3

P1. = 111+99.00
 Y 194,556.24
 X 1,034,806.80
 A. = 177-00'-02"
 D. = 17-00'-02"
 T. = 117.241
 L. = 230.84'
 R. = 520.87'
 P.C. = 102.0003'
 P.T. = 13412.22"N"

P1. = 14+45.29"B"
 A. = 50'-00"
 D. = 6'-00"
 T. = 445.29'
 L. = 833.33'
 R. = 954.93'
 P.C. = 104.0000"B"
 P.T. = 18+33.33"B"

P1. = 23+51.89"B"
 A. = 83'-56'-17"
 D. = 18'-00"
 T. = 343.56'
 L. = 559.59'
 R. = 381.97'
 P.C. = 20+08.33"B"
 P.T. = 23+67.92"B"

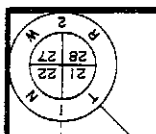
P1. = 33+19.92"B"
 A. = 43'-02'-00"
 D. = 15'-00"
 T. = 180.59'
 L. = 286.69'
 R. = 381.97'
 P.C. = 31+69.33"B"
 P.T. = 34+58.22"B"

P1. = 127+93.83"W"
 A. = 38'-15'-21"
 D. = 9'-00"
 T. = 220.80'
 L. = 425.06'
 R. = 636.02'
 P.C. = 126+73.03"W"
 P.T. = 129+98.09"W"

P1. = 127+93.83"W"
 A. = 38'-15'-21"
 D. = 9'-00"
 T. = 220.80'
 L. = 425.06'
 R. = 636.02'
 P.C. = 126+73.03"W"
 P.T. = 129+98.09"W"

P1. = 127+93.83"W"
 A. = 38'-15'-21"
 D. = 9'-00"
 T. = 220.80'
 L. = 425.06'
 R. = 636.02'
 P.C. = 126+73.03"W"
 P.T. = 129+98.09"W"

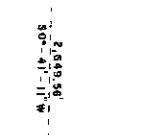
1288-000



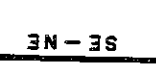
ALUM. MON.
Y 199,350.50
X 1,937,505.39

5
M
I
S
M

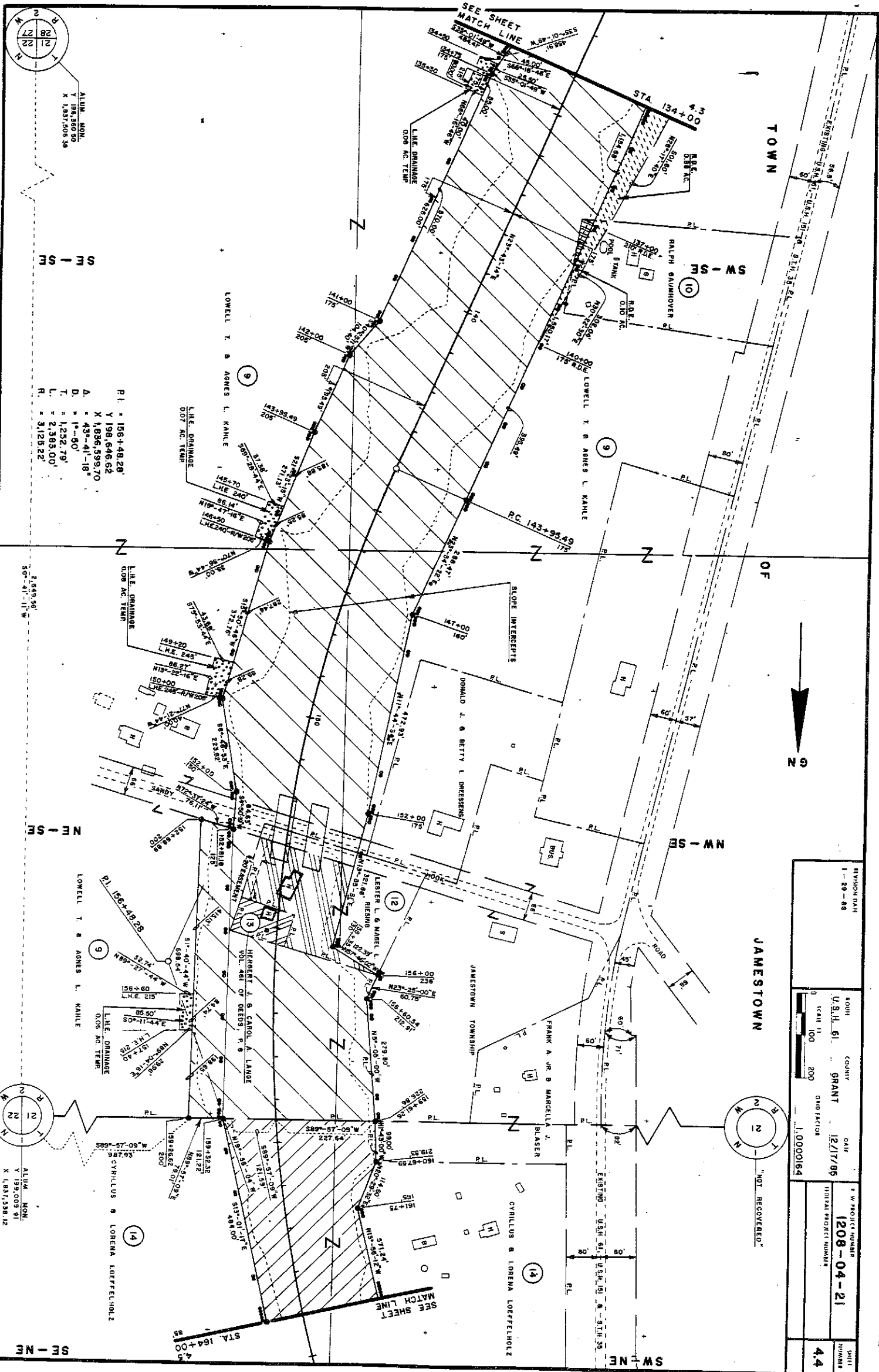
P.I. = 156+48.28
Y 199,546.62
X 1,936,599.70
A = 43°-41'-18"
D = 1°-50'
T = 1,252.79'
L = 2,383.00'
R = 3,128.22'



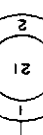
ALUM. MON.
Y 199,009.91
X 1,937,538.12



ALUM. MON.
Y 199,009.91
X 1,937,538.12



JAMESTOWN



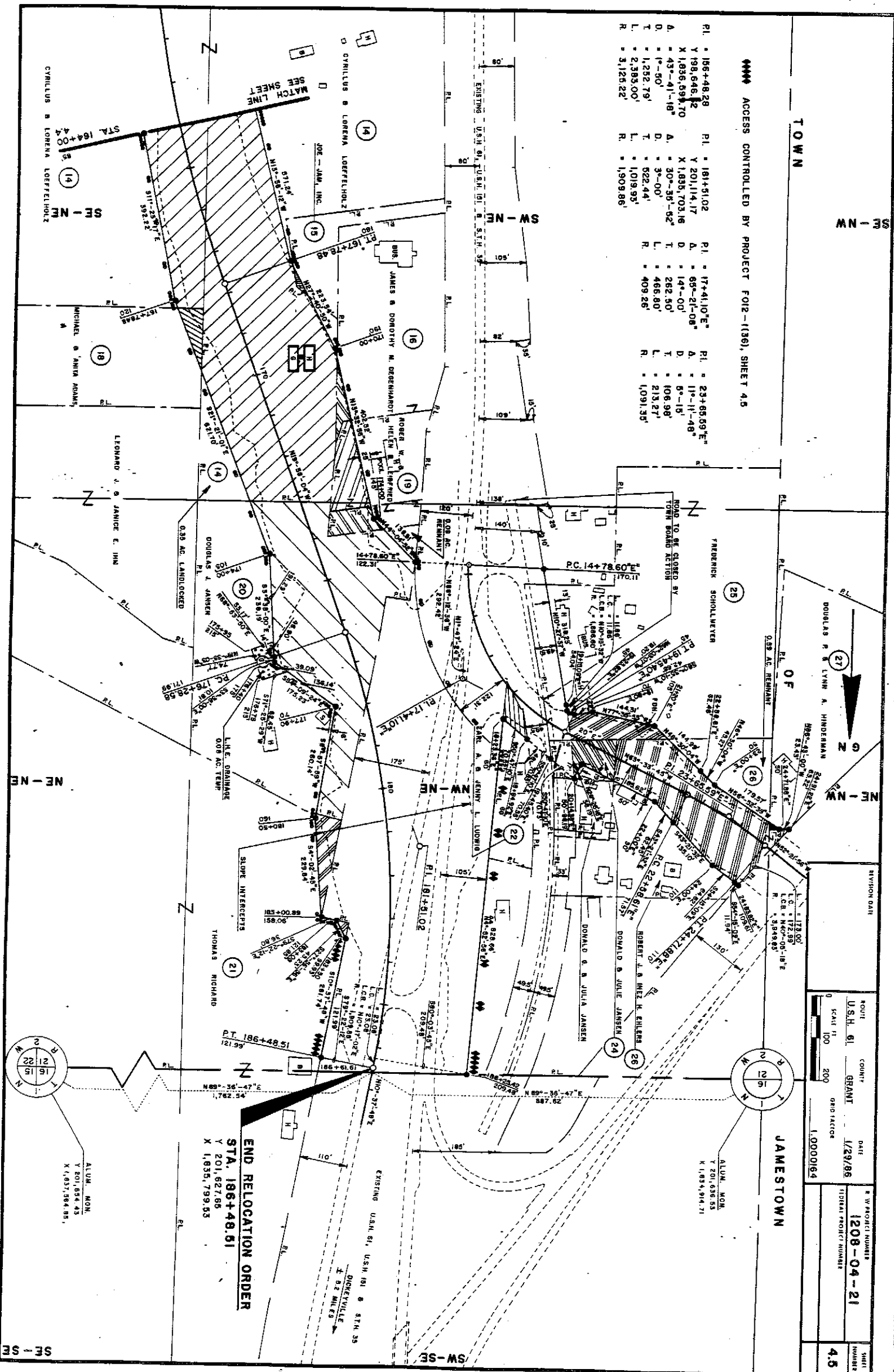
"NOT RECOVERED"

REVISION DATA	1 - 29 - 88
FOUR COUNTY DATE	U.S.H. 61 GRANT 12/17/95
SCALE	1" = 100'
GRAPHIC SCALE	0 100 200
PROJECT NUMBER	1208-04-21
DATE	12/17/95
PROJECT NUMBER	1,0000164
SHEET NUMBER	4.4

TOWN
 SW - NW
 NW - NW

ACCESS CONTROLLED BY PROJECT FOIR-(136), SHEET 4.5

R1 = 186+48.29 R1 = 181+51.02 R1 = 17+41.0"E" R1 = 23+85.97"E"
 Y 199,646.12 Y 201,114.17 A = 68°-21'-08" A = 11°-11'-48"
 X 1,836,594.70 X 1,835,703.16 D = 14°-00' D = 5°-15'
 A = 43°-41'-18" A = 30°-30'-52" T = 282.50' T = 106.96'
 D = 1'-50" D = 3'-00" L = 486.80' L = 213.27'
 T = 1,252.79' T = 622.44' R = 409.26' R = 1,091.35'
 L = 2,383.00' L = 1,019.93' R = 1,908.86'
 R = 3,125.22' R = 1,908.86'



REVISION DATE	ROUTE	COUNTY	DATE
	U.S.H. 61	GRANT	1/29/95
	SCALE 1" = 100'	ORD. FACTOR	1.0000164

PROJECT NUMBER	1208-04-21
TOTAL PROJECT NUMBER	4.5

END RELOCATION ORDER
 STA. 186+48.51
 Y 201,627.65
 X 1,835,799.33

ALUM. MON.
 Y 201,584.43
 X 1,837,584.85