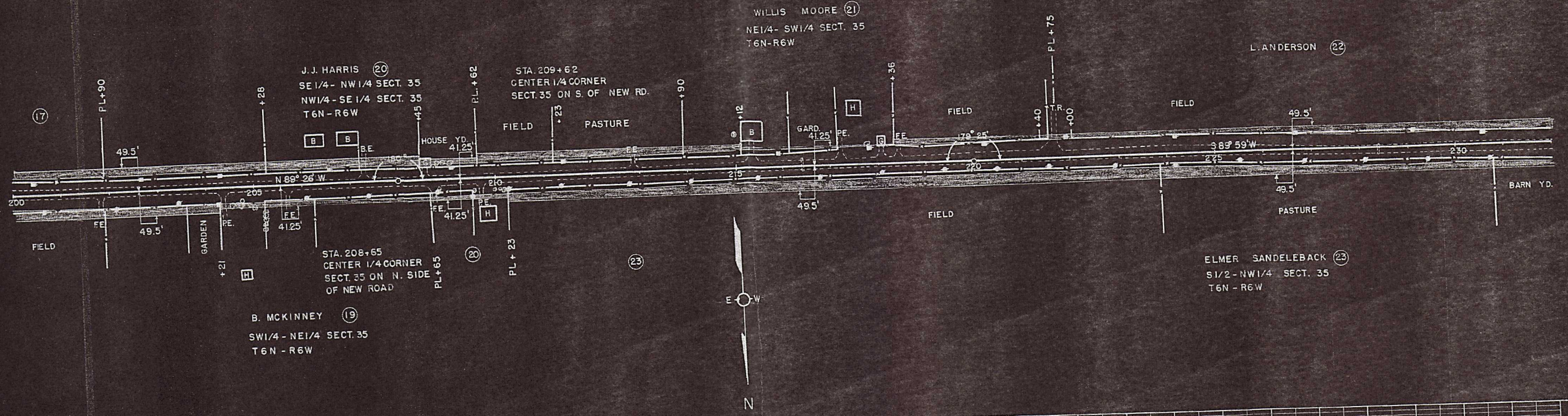


PLAN
COMPILED BY
NOTED BOOK
NO.



J.J. HARRIS (20)
SE 1/4 - NW 1/4 SECT. 35
NW 1/4 - SE 1/4 SECT. 35
T6N - R6W

STA. 209+62
CENTER 1/4 CORNER
SECT. 35 ON S. OF NEW RD.

WILLIS MOORE (21)
NE 1/4 - SW 1/4 SECT. 35
T6N - R6W

L. ANDERSON (22)

STA. 208+65
CENTER 1/4 CORNER
SECT. 35 ON N. SIDE
OF NEW ROAD

B. MCKINNEY (19)
SW 1/4 - NE 1/4 SECT. 35
T6N - R6W

ELMER SANDEBACK (23)
S 1/2 - NW 1/4 SECT. 35
T6N - R6W



PLAN
SURVAIL
CORNER
NOTE BOOK
NO. 100

DAVID DUNCAN (13)

PASTURE

PASTURE

FIELD

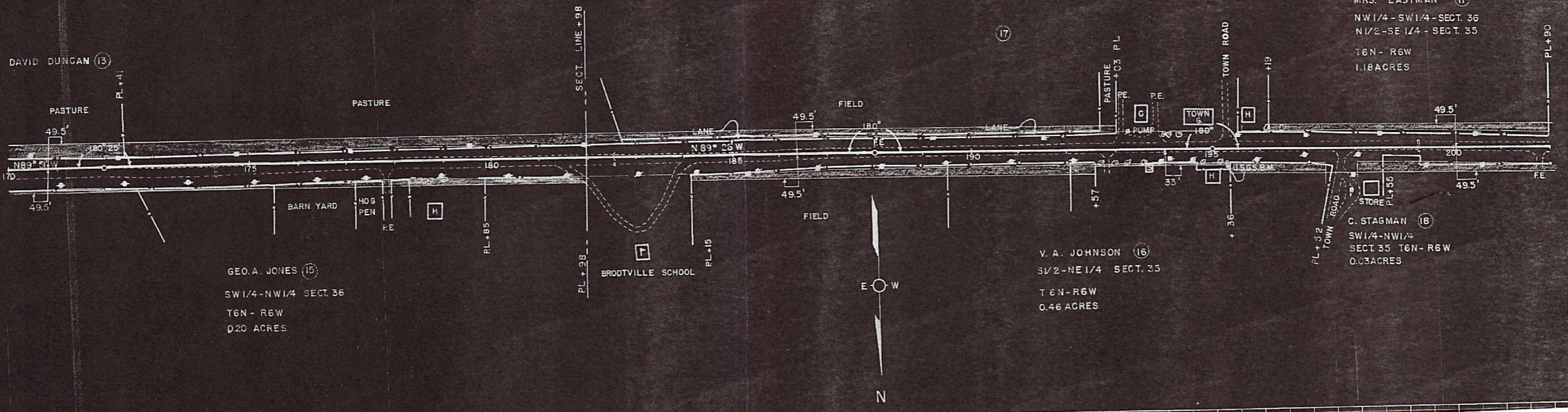
MRS. EASTMAN (17)
NW 1/4 - SW 1/4 - SECT. 36
N 1/2 - SE 1/4 - SECT. 35
T 6N - R 6W
1.18 ACRES

GEO. A. JONES (15)
SW 1/4 - NW 1/4 SECT. 36
T 6N - R 6W
0.20 ACRES

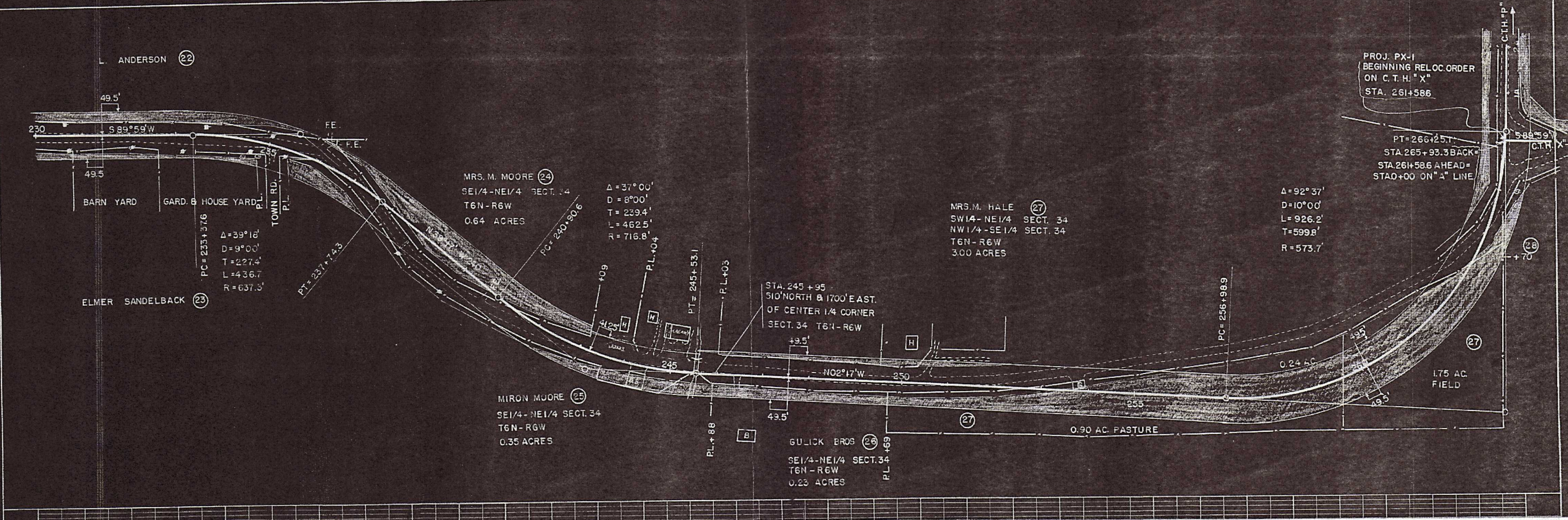
BRODTVILLE SCHOOL

V. A. JOHNSON (16)
S 1/2 - NE 1/4 SECT. 35
T 6N - R 6W
0.46 ACRES

C. STAGMAN (18)
SW 1/4 - NW 1/4
SECT. 35 T 6N - R 6W
0.03 ACRES



PLAN
DRAWN BY
CHECKED BY
NOTE BOOK NO.
DATE



+